



**a TxDOT Project**  
For immediate release

## NEWS RELEASE

### EL PASO DISTRICT

Jennifer Wright  
(915) 790-4340  
Jennifer.Wright3@txdot.gov

September 23, 2016

### I-10 West

#### Overnight

Sunday, Sept. 25 through Thursday, Sept. 29  
9 p.m. each night to 5 a.m. each morning.

- I-10 Westbound will be reduced to one lane between the Executive Center Overpass and the Paisano (US 85) Overpass.

Crews will continue concrete paving of the new westbound lanes. [Map 1]

### Mesa

#### Weeklong

9 a.m. Saturday, Sept. 24 to 4 p.m. Friday, Sept. 30

- A right lane on North Mesa Street (SH 20) will be closed between Osborne Drive and Remcon Circle (in the direction traveling toward Remcon Circle).
- A right turn lane coming from the westbound Mesa Exit Ramp onto North Mesa Street (SH 20) will be closed.
- A right lane on North Mesa Street (SH 20) will be closed between South Desert Boulevard and Osborne Drive (in the direction traveling toward Doniphan Drive).

This is a continuation of work that began last week. Crews are working on a nearby waterline, bridge columns and a sewer line. [Map 2]

### Resler

#### Daytime

Tuesday, Sept. 27 through Friday, Sept. 30  
9 a.m. to 4 p.m. each day

- The Resler Exit Ramp from I-10 Westbound will be closed.

Crews will be setting girders. [Map 1]

Go to [go10elpaso.com](http://go10elpaso.com) and click on “flyover video” to see a video rendering of the entire six-mile transformation.

###

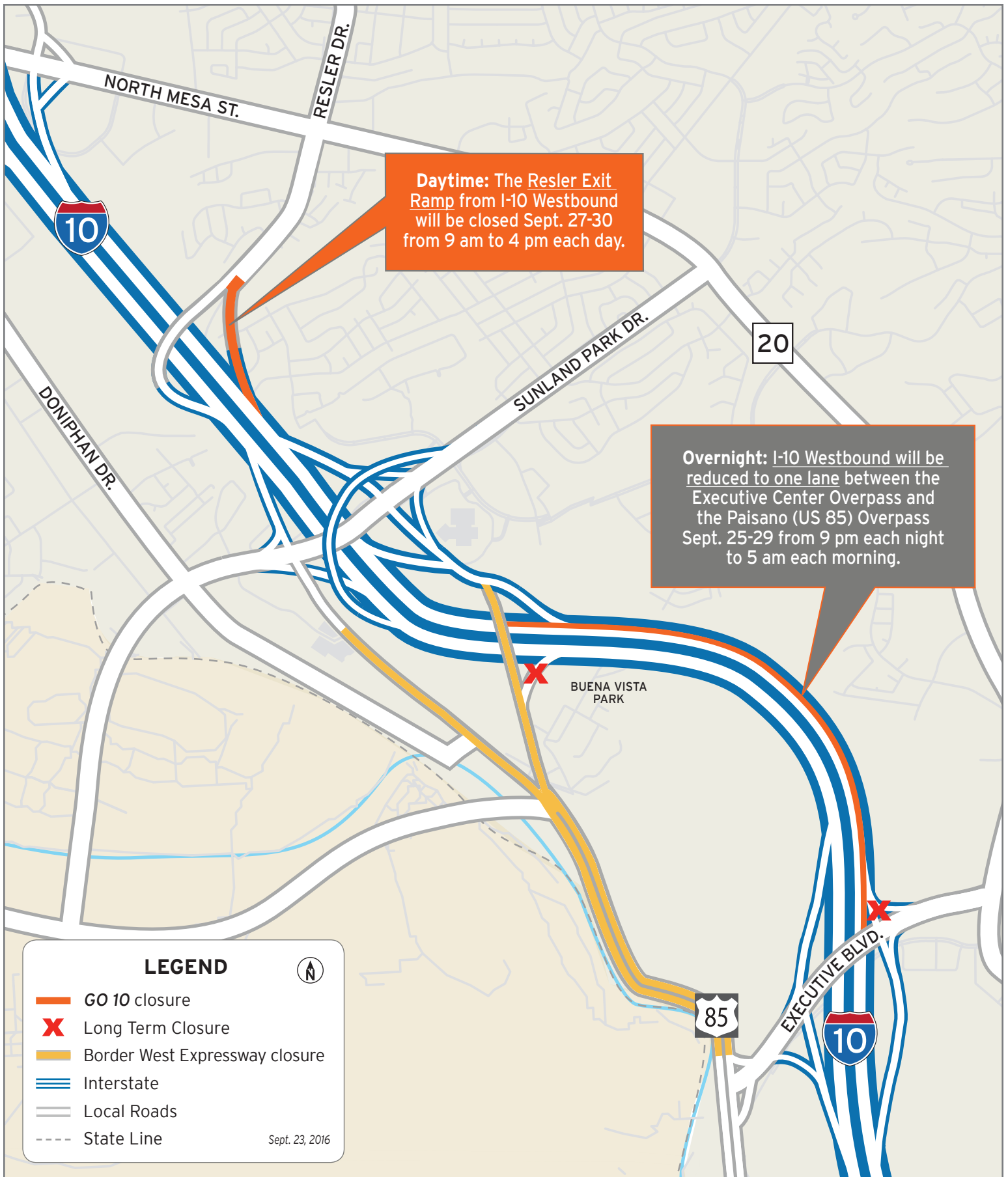


The Texas Department of Transportation is responsible for maintaining 80,000 miles of road and for supporting aviation, rail, and public transportation across the state. GO 10 is a \$158 million reconstruction of Interstate 10 that spans approximately 6 miles on El Paso's West Side between Executive Center Boulevard and North Mesa Street. GO 10 features the addition of collector-distributor lanes and a new direct connector with Border West Expressway.

Maintain a Safe System • Address Congestion • Best-in-Class State Agency • Connect Texas Communities

An Equal Opportunity Employer

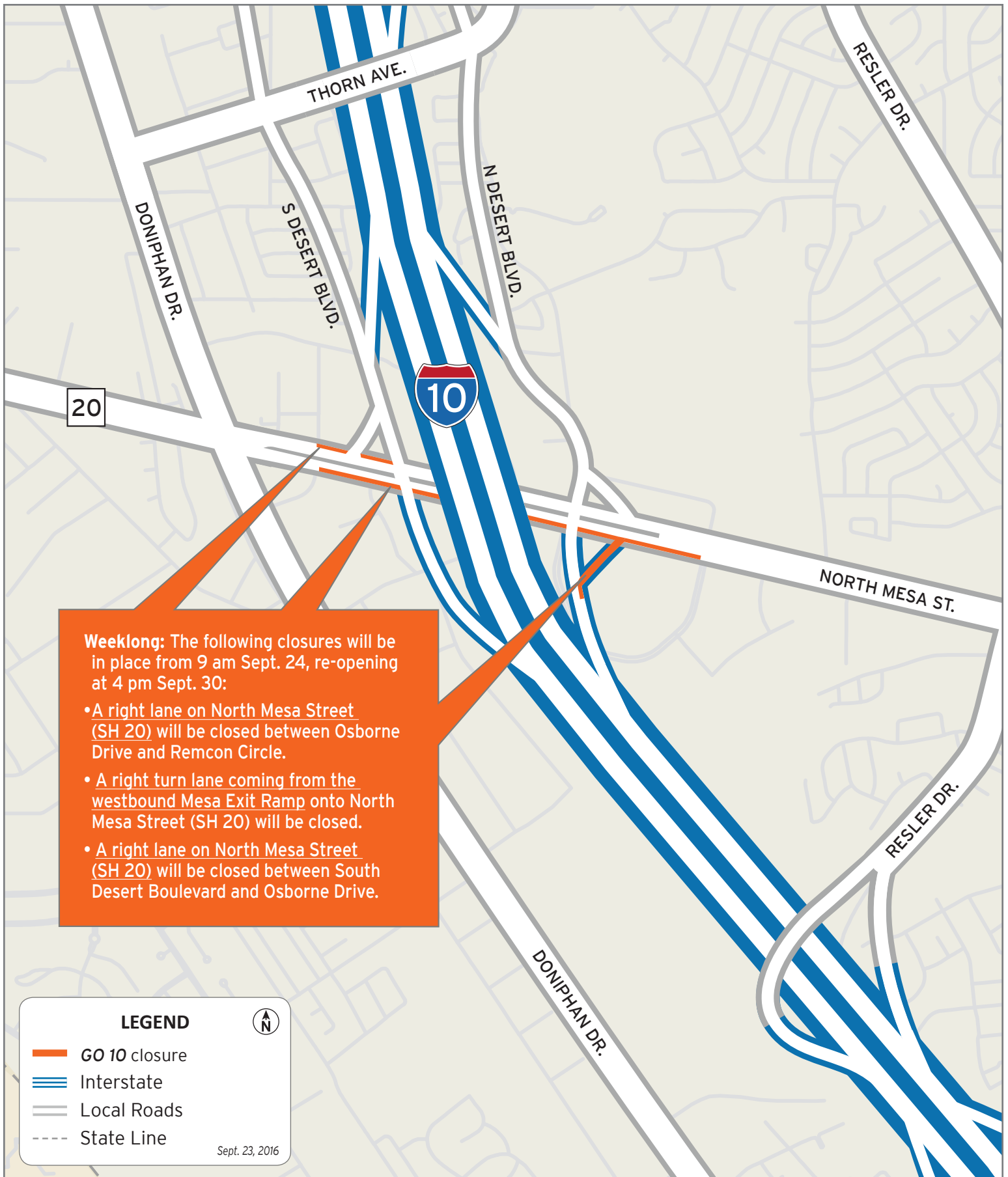
[www.go10elpaso.com](http://www.go10elpaso.com) | [facebook.com/go10elpaso](https://facebook.com/go10elpaso) | [twitter.com/go10ep](https://twitter.com/go10ep)



# Closure on I-10 and Resler

Map 1 of 2





# Closures on North Mesa Street

Map 2 of 2

