



**a TxDOT Project**  
For immediate release

## NEWS RELEASE

### EL PASO DISTRICT

Jennifer Wright  
(915) 790-4340  
Jennifer.Wright3@txdot.gov

January 6, 2017

### CONTINUED CLOSURES DUE TO BRIDGE WORK

#### I-10 East

##### Daytime

Monday, Jan. 9 through Friday, Jan. 12

9 a.m. to 4 p.m. each day

- I-10 Eastbound will be reduced to one lane for approximately a half mile between the North Mesa Overpass and the Resler Overpass.

Crews will be conducting structural bridge work. [Map 2]

#### I-10 at Mesa

##### Overnight

Sunday, Jan. 8 through Thursday, Jan. 12

9 p.m. each night to 6 a.m. each morning

- I-10 Westbound will be completely closed between the North Mesa Exit Ramp (Exit 11) and the North Mesa Entrance Ramp. Detour: Traffic will exit at North Mesa Street (Exit 11) and re-enter I-10 Westbound immediately at the next entrance ramp.
- I-10 Eastbound will have the left lane closed between the North Mesa Exit Ramp (Exit 11) and the North Mesa Entrance Ramp.

Crews will be continuing structural work on the I-10 Overpass at North Mesa Street (SH 20). [Map 1]

##### Overnight

Sunday, Jan. 8

9 p.m. to 6 a.m.

- North Mesa Street (SH 20) will be reduced to two lanes in each direction between North Desert and South Desert Boulevard. [Map 1]

Crews will be working on the new Mesa Bridge overhangs.

1 of 2



The Texas Department of Transportation is responsible for maintaining 80,000 miles of road and for supporting aviation, rail, and public transportation across the state. GO 10 is a \$158 million reconstruction of Interstate 10 that spans approximately 6 miles on El Paso's West Side between Executive Center Boulevard and North Mesa Street. GO 10 features the addition of collector-distributor lanes and a new direct connector with Border West Expressway.

Maintain a Safe System • Address Congestion • Best-in-Class State Agency • Connect Texas Communities

An Equal Opportunity Employer

[www.go10elpaso.com](http://www.go10elpaso.com) | [facebook.com/go10elpaso](https://facebook.com/go10elpaso) | [twitter.com/go10ep](https://twitter.com/go10ep)



**a TxDOT Project**  
For immediate release

# NEWS RELEASE

## EL PASO DISTRICT

Jennifer Wright  
(915) 790-4340  
Jennifer.Wright3@txdot.gov

### FUTURE CLOSURES

#### I-10 Both Directions

##### Overnight

Sunday, Jan. 15 through Tuesday, Jan. 17

9 p.m. each night to 6 a.m. each morning

- I-10 Westbound will be completely closed at the Sunland Park Exit Ramp (Exit 13)

Detour: Motorists on I-10 West will exit at Sunland Park Drive (Exit 13) and re-enter I-10 just prior to Sunland Park Drive. [Map 2]

Crews will be conducting structural work on the westbound Paisano Drive (US 85) Bridge.

##### Overnight

Monday, Jan. 16 through Thursday, Jan. 19

9 p.m. each night to 6 a.m.

- I-10 Westbound will be reduced to one lane between the Sunland Park Overpass and the North Mesa Underpass.
- I-10 Eastbound will be completely closed at the North Mesa Exit Ramp (Exit 11).

Detour: Motorists on I-10 East will be detoured onto Doniphan Drive (SH 20) and will be able to re-enter I-10 at Sunland Park Drive.

Crews will be setting steel beams into place at the Resler Flyover Ramp. [Map 3]

**All closures are subject to change.**

The latest information is posted on the traffic alerts page at [www.go10elpaso.com](http://www.go10elpaso.com) and on Twitter at [twitter.com/GO10EP](https://twitter.com/GO10EP).

2 of 2

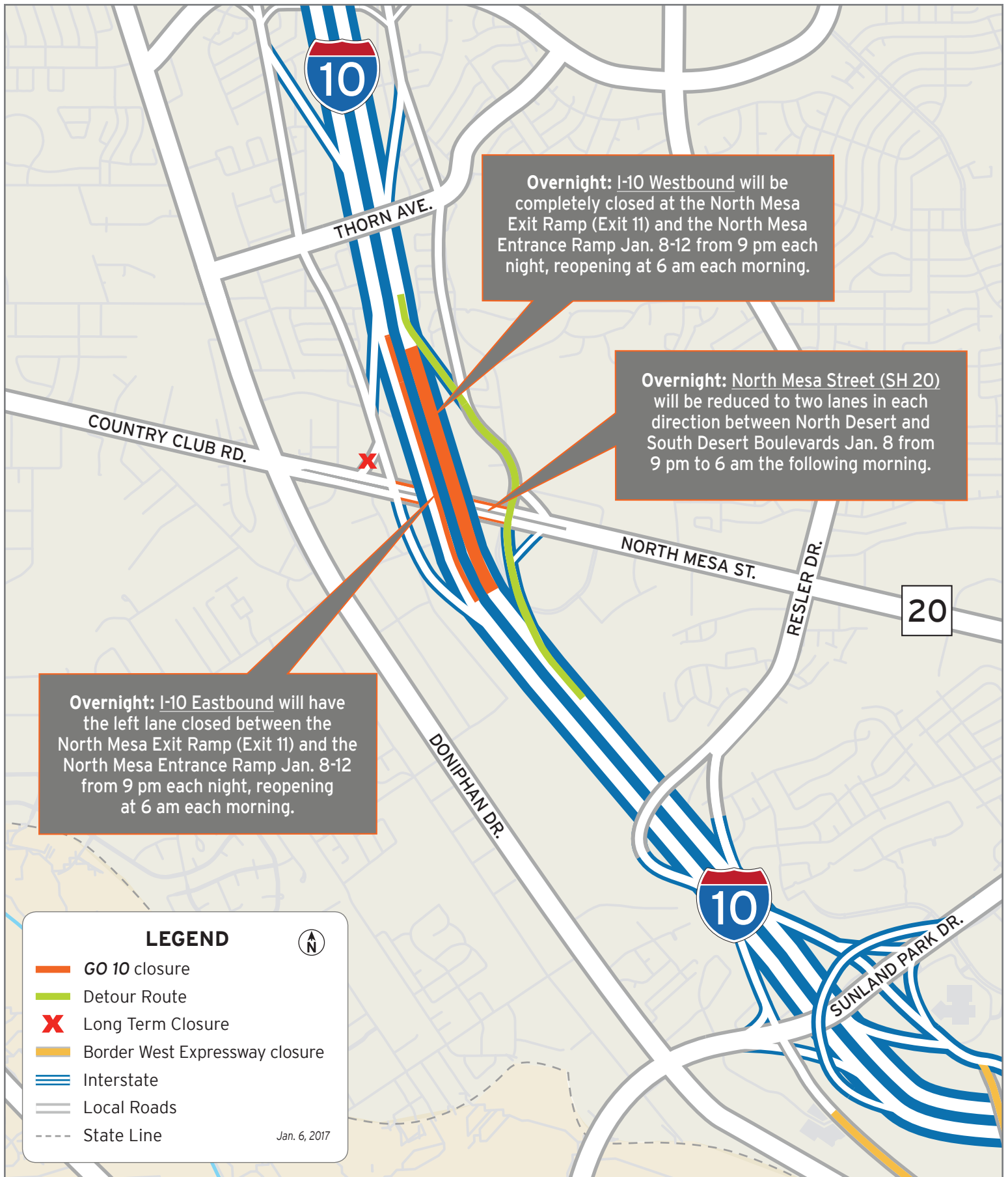


The Texas Department of Transportation is responsible for maintaining 80,000 miles of road and for supporting aviation, rail, and public transportation across the state. GO 10 is a \$158 million reconstruction of Interstate 10 that spans approximately 6 miles on El Paso's West Side between Executive Center Boulevard and North Mesa Street. GO 10 features the addition of collector-distributor lanes and a new direct connector with Border West Expressway.

Maintain a Safe System • Address Congestion • Best-in-Class State Agency • Connect Texas Communities

An Equal Opportunity Employer

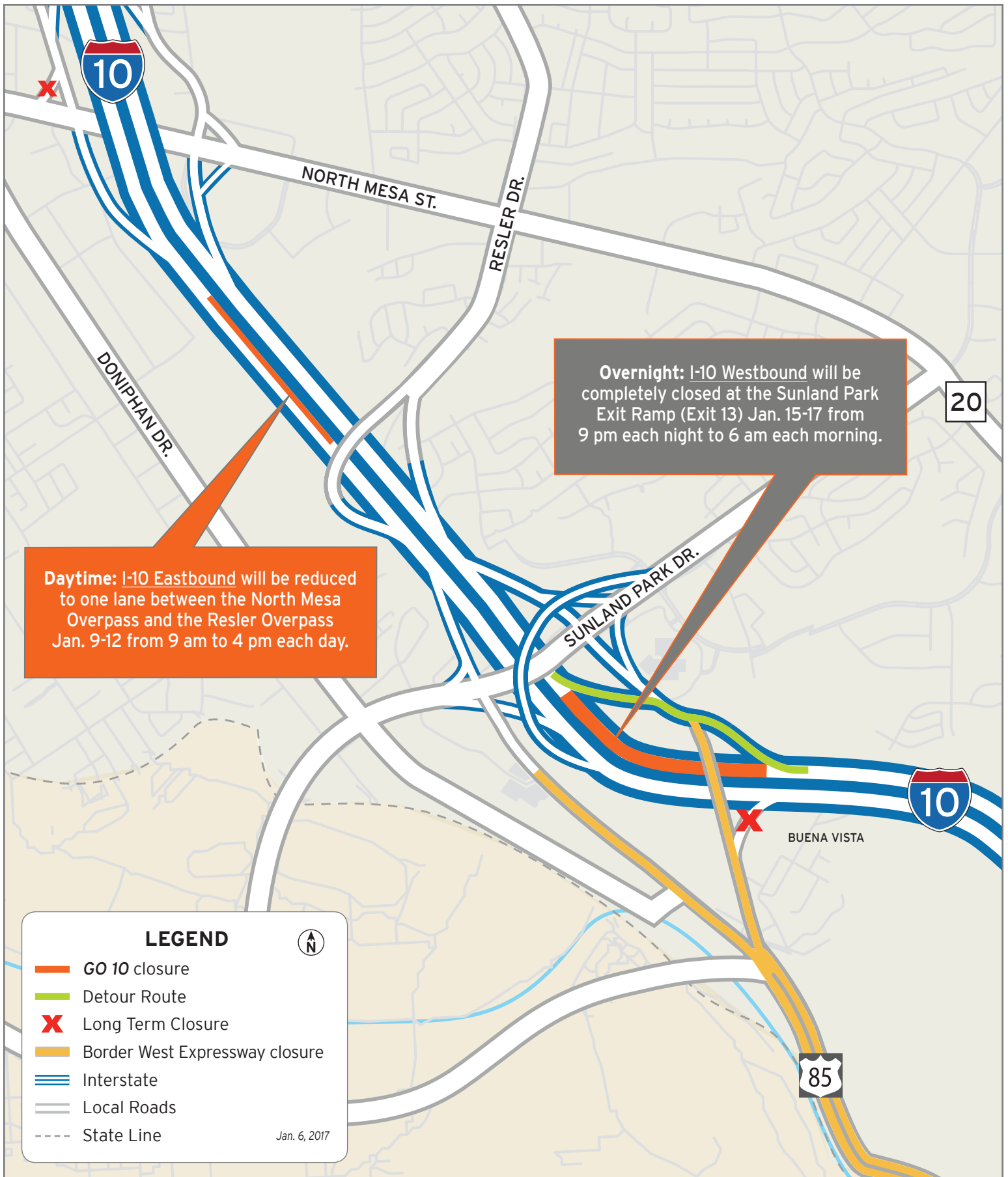
[www.go10elpaso.com](http://www.go10elpaso.com) | [facebook.com/go10elpaso](https://facebook.com/go10elpaso) | [twitter.com/go10ep](https://twitter.com/go10ep)



# Overnight closures on I-10

Map 1 of 3





# Closures on I-10

Map 2 of 3





# Overnight lane closures on I-10

Map 3 of 3

