



a TxDOT Project
For immediate release

NEWS RELEASE

EL PASO DISTRICT

Jennifer Wright
(915) 790-4340
Jennifer.Wright3@txdot.gov

October 7, 2016

Work continues at North Mesa. Crews will install more concrete barrier along the I-10 corridor.

Mesa

Weeklong

9 a.m. Saturday, Oct. 8 to 4 p.m. Friday, Oct. 14

- A right lane on North Mesa Street (SH 20) will be closed between Osborne Drive and Remcon Circle (in the direction traveling toward Remcon Circle).
- A right turn lane coming from the westbound Mesa Exit Ramp onto North Mesa Street (SH 20) will be closed.
- A right lane on North Mesa Street (SH 20) will be closed between South Desert Boulevard and Osborne Drive (in the direction traveling toward Doniphan Drive).

This is a continuation of work that began three weeks ago. Crews are working on bridge columns and utility lines. [Map 2]

NOTE: This closure could be altered in its schedule, depending on progress in other work areas.

I-10 East

Nighttime

Sunday, Oct. 9 and Monday, Oct. 10

9 p.m. each night to 5 a.m. each morning

- I-10 Eastbound will be reduced to one lane between the North Mesa Overpass (Exit 11) and the Sunland Park Overpass (Exit 13).

Crews will be installing concrete barrier to prepare for more extensive work coming to the I-10 intersection with North Mesa Street (SH 20). [Map 1]

I-10 West

Overnight

Sunday, Oct. 9 through Thursday, Oct. 13

9 p.m. each night to 5 a.m. each morning

- I-10 Westbound will be reduced to one lane between the Executive Center Overpass (Exit 16) and the North Mesa Overpass (Exit 11).

Crews will continue concrete paving of the new westbound lanes and they will be installing concrete barrier.

[Map 1]

###

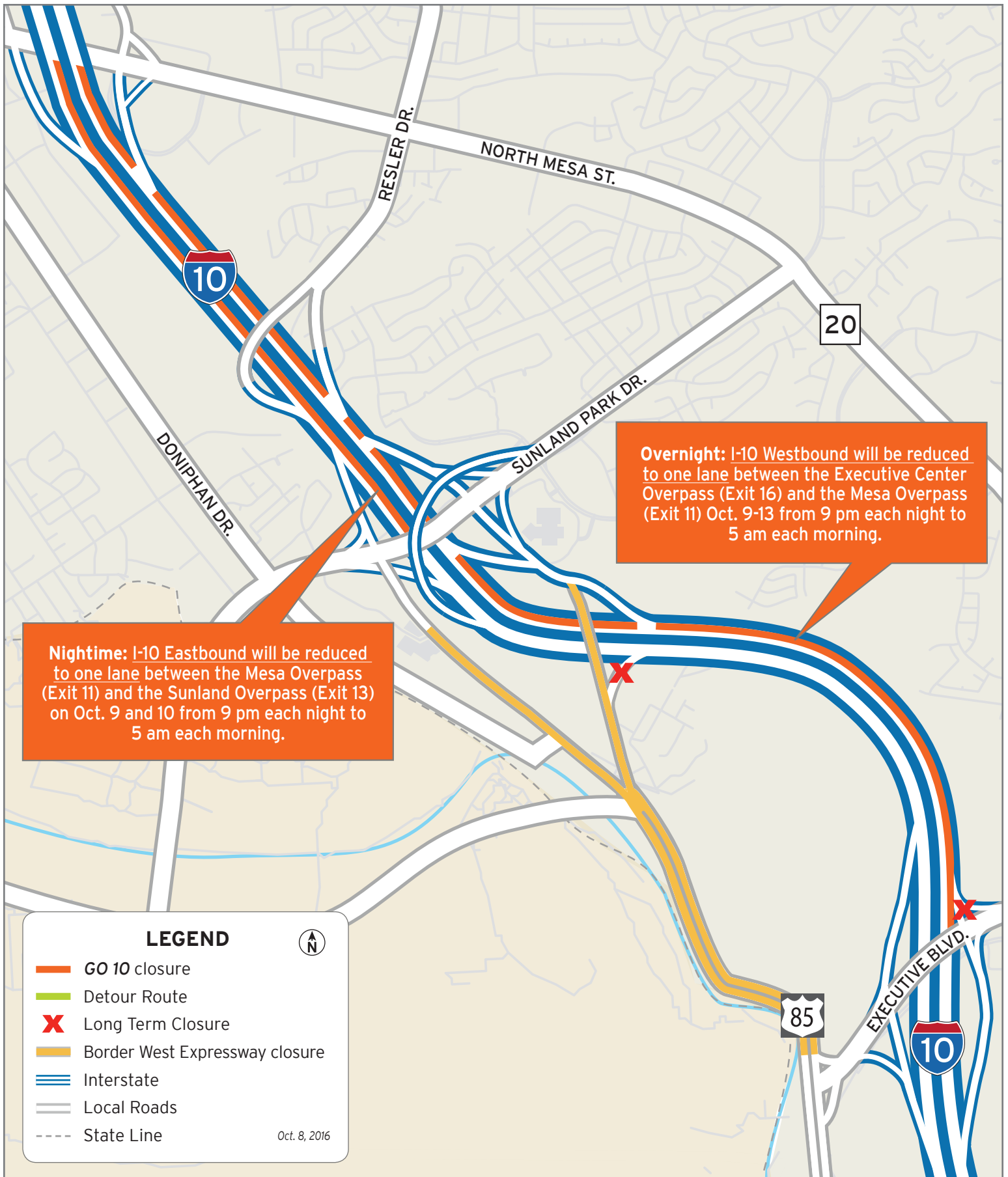


The Texas Department of Transportation is responsible for maintaining 80,000 miles of road and for supporting aviation, rail, and public transportation across the state. GO 10 is a \$158 million reconstruction of Interstate 10 that spans approximately 6 miles on El Paso's West Side between Executive Center Boulevard and North Mesa Street. GO 10 features the addition of collector-distributor lanes and a new direct connector with Border West Expressway.

Maintain a Safe System • Address Congestion • Best-in-Class State Agency • Connect Texas Communities

An Equal Opportunity Employer

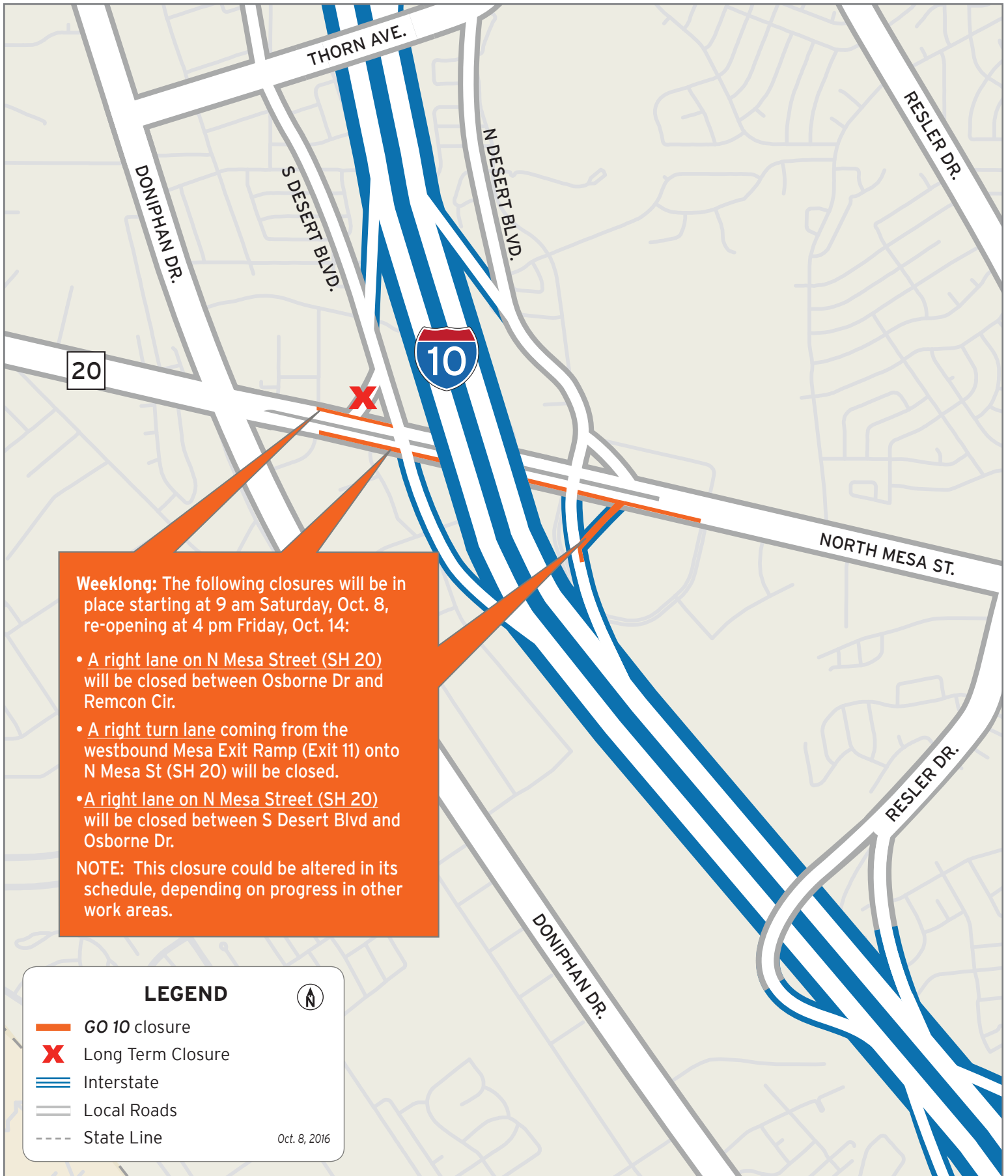
www.go10elpaso.com | facebook.com/go10elpaso | twitter.com/go10ep



Closures on I-10

Map 1 of 2





Weeklong: The following closures will be in place starting at 9 am Saturday, Oct. 8, re-opening at 4 pm Friday, Oct. 14:

- A right lane on N Mesa Street (SH 20) will be closed between Osborne Dr and Remcon Cir.
- A right turn lane coming from the westbound Mesa Exit Ramp (Exit 11) onto N Mesa St (SH 20) will be closed.
- A right lane on N Mesa Street (SH 20) will be closed between S Desert Blvd and Osborne Dr.

NOTE: This closure could be altered in its schedule, depending on progress in other work areas.

LEGEND

- GO 10 closure
- Long Term Closure
- Interstate
- Local Roads
- State Line

Oct. 8, 2016



Closures on North Mesa Street

Map 2 of 2

