



a TxDOT Project
For immediate release

NEWS RELEASE

EL PASO DISTRICT

Blanca Del Valle
(915) 790-4341
Blanca.DelValle@txdot.gov

July 29, 2016

Crews will finish demolition of the US 85 Bridge this Sunday. Crews will open the westbound exit-only lane at Executive Exit Ramp.

I-10 Both Directions

26 Hours

The following closures begin at 3 a.m. Sunday, **July 31**, re-opening at 5 a.m. Monday, **August 1**.

- I-10 Westbound will completely close between the Sunland Park Exit Ramp and the Sunland Park Entrance Ramp.
- Two left lanes on I-10 Eastbound will close between the Sunland Park Overpass and the Executive Center Overpass.

Crews will demolish the remaining portion of the westbound Paisano (US 85) Bridge over I-10. [Illustration Map 1]

Detour: Westbound vehicles will take the Sunland Park Exit and re-enter I-10 West just prior to the Sunland Park Overpass. Eastbound vehicles will not be detoured.

Overnight

The following closures happen Sunday, **July 31** through Thursday, **August 4** each night from 9 p.m. to 5 a.m.:

- I-10 Westbound will completely close between the Sunland Park Exit Ramp and the Sunland Park Entrance Ramp.
- I-10 Eastbound will completely close between the Sunland Park Overpass and the Executive Center Overpass.

This night closure will be recurring as the *new* westbound Paisano (US 85) Bridges takes shape over I-10. [Illustration Map 2]

Detour: Eastbound vehicles will exit at Sunland Park (Exit 13), turn left on Sunland Park Dr, turn right on North Mesa St (SH 20), and turn right on Executive Center Blvd. Vehicles will be able to re-enter I-10 East from Executive Center Blvd. Westbound vehicles will exit at the Sunland Park Exit (Exit 13) and re-enter I-10 West just prior to the Sunland Park Overpass.

Substitute Closure: If the aforementioned overnight closures of I-10 in both directions are canceled, the closure listed on page 2 (*two right lanes on I-10 East) will be implemented.

Page 1 of 3



The Texas Department of Transportation is responsible for maintaining 80,000 miles of road and for supporting aviation, rail, and public transportation across the state. GO 10 is a \$158 million reconstruction of Interstate 10 that spans approximately 6 miles on El Paso's West Side between Executive Center Boulevard and North Mesa Street. GO 10 features the addition of collector-distributor lanes and a new direct connector with Border West Expressway.

Maintain a Safe System • Address Congestion • Best-in-Class State Agency • Connect Texas Communities

An Equal Opportunity Employer

www.go10elpaso.com | facebook.com/go10elpaso | twitter.com/go10ep



a TxDOT Project
For immediate release

NEWS RELEASE

EL PASO DISTRICT

Blanca Del Valle
(915) 790-4341
Blanca.DelValle@txdot.gov

I-10 East

Overnight

* The two right lanes on I-10 Eastbound will be closed between Sunland Park and the Buena Vista Bridge (aka the Bridge to Nowhere) Sunday, **July 31** through Thursday, **August 4** each night from 9 p.m. to 5 a.m. Crews be paving new outside lanes along this section of I-10. [Illustration Map 4]

I-10 West

Overnight

The westbound Executive Exit Ramp and one right lane on I-10 West from Asarco leading up to the Executive Exit Ramp will be closed at 9 p.m. Monday, **August 1**, and will re-open at 5 a.m. the next morning. **Crews will be opening up the exit-only lane to the westbound Executive Exit Ramp**, which will require moving of barrier and re-stripping of lanes. Motorists should use caution when approaching the newly opened, re-stripped exit-only lane. [Illustration Map 2]

North Mesa

Daytime

A right lane on North Mesa Street (SH 20) under the I-10 Overpass – in the direction traveling from North Desert Blvd to South Desert Blvd – will be closed from 9 a.m. to 4 p.m. Monday, **August 1**. Crews will be removing an electrical cabinet. [Illustration Map 3]

Daytime

A right lane at the North Mesa Exit Ramp (Exit 11) will taper to a close as it approaches the North Mesa Intersection. The right lane closure will continue on North Mesa Street (SH 20) up to Remcon Circle. The closure will be in place Monday, **August 1** through Friday, **August 5** each day from 9 a.m. to 4 p.m. Crews will be probing for utilities. [Illustration Map 3]

Resler

26 Hours

The Resler Entrance Ramp to I-10 Eastbound will be closed for 26 hours, starting at 3 a.m. **August 7** and opening at 5 a.m. **August 8**. Crews will be trenching and installing a reclaimed water casing. [Illustration Map 2]

Page 2 of 3



The Texas Department of Transportation is responsible for maintaining 80,000 miles of road and for supporting aviation, rail, and public transportation across the state. GO 10 is a \$158 million reconstruction of Interstate 10 that spans approximately 6 miles on El Paso's West Side between Executive Center Boulevard and North Mesa Street. GO 10 features the addition of collector-distributor lanes and a new direct connector with Border West Expressway.

Maintain a Safe System • Address Congestion • Best-in-Class State Agency • Connect Texas Communities

An Equal Opportunity Employer

www.go10elpaso.com | facebook.com/go10elpaso | twitter.com/go10ep



a TxDOT Project
For immediate release

NEWS RELEASE

EL PASO DISTRICT

Blanca Del Valle
(915) 790-4341
Blanca.DelValle@txdot.gov

ADVANCED NOTICE

26 Hours - Bridge to Nowhere

I-10 in both directions will be completely closed between the Sunland Park Overpass to the Executive Center Overpass for 26 hours from 3 a.m. Sunday, **August 14** to 5 a.m. Monday, **August 15**. Crews will be demolishing the Buena Vista Bridge (aka the Bridge to Nowhere). [Illustration will be included with next week's news release.]

Detour: Eastbound vehicles will exit at Sunland Park (Exit 13), turn left on Sunland Park Dr, turn right on North Mesa St (SH 20), and turn right on Executive Center Blvd. Vehicles will be able to re-enter I-10 East from Executive Center Blvd.

Westbound vehicles will exit at Executive Center (Exit 16), turn right on Executive Center Blvd, turn left on North Mesa St (SH 20), and turn left on Sunland Park Dr. Vehicles will be able to re-enter I-10 West from Sunland Park Dr.

Page 3 of 3

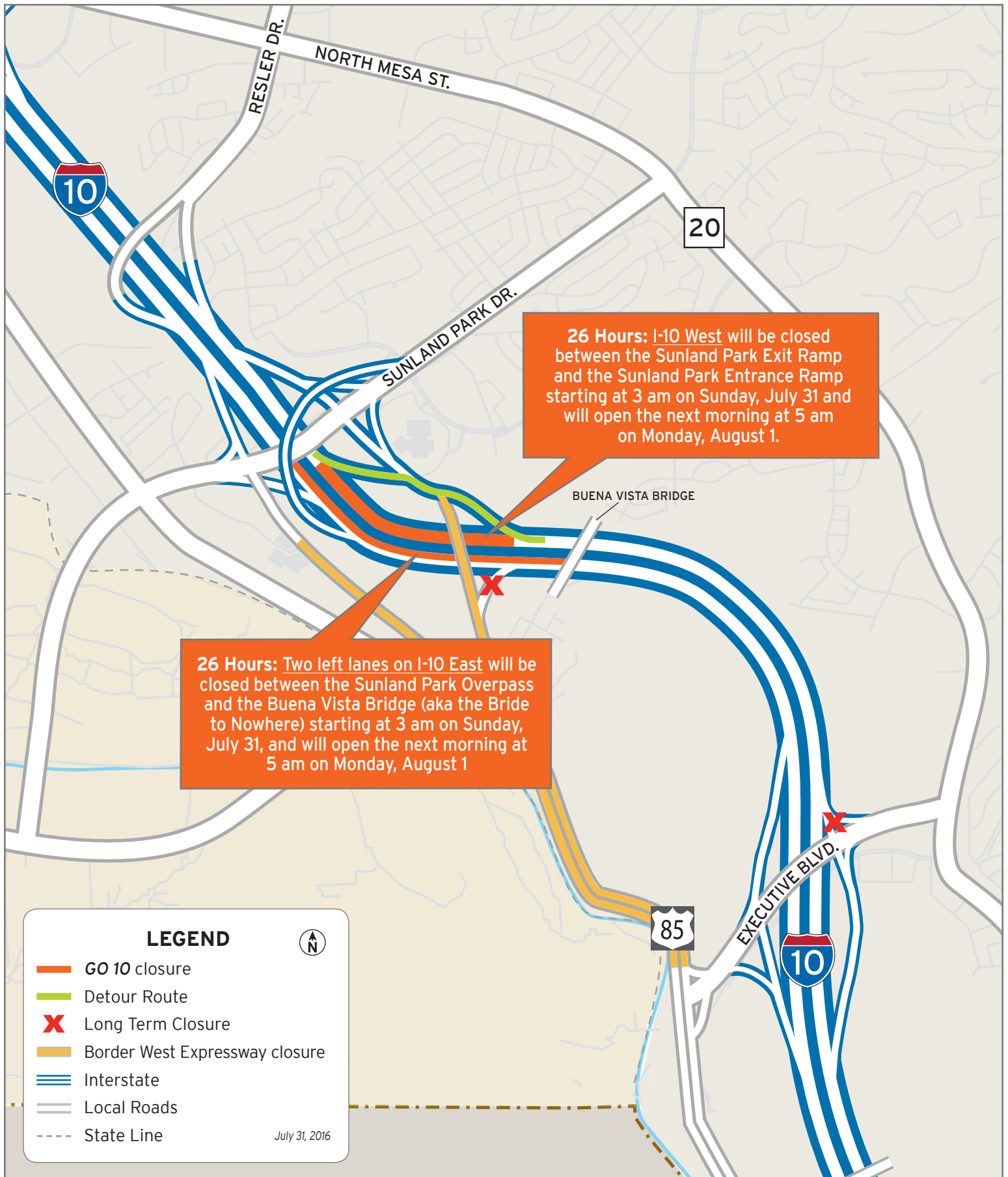


The Texas Department of Transportation is responsible for maintaining 80,000 miles of road and for supporting aviation, rail, and public transportation across the state. GO 10 is a \$158 million reconstruction of Interstate 10 that spans approximately 6 miles on El Paso's West Side between Executive Center Boulevard and North Mesa Street. GO 10 features the addition of collector-distributor lanes and a new direct connector with Border West Expressway.

Maintain a Safe System • Address Congestion • Best-in-Class State Agency • Connect Texas Communities

An Equal Opportunity Employer

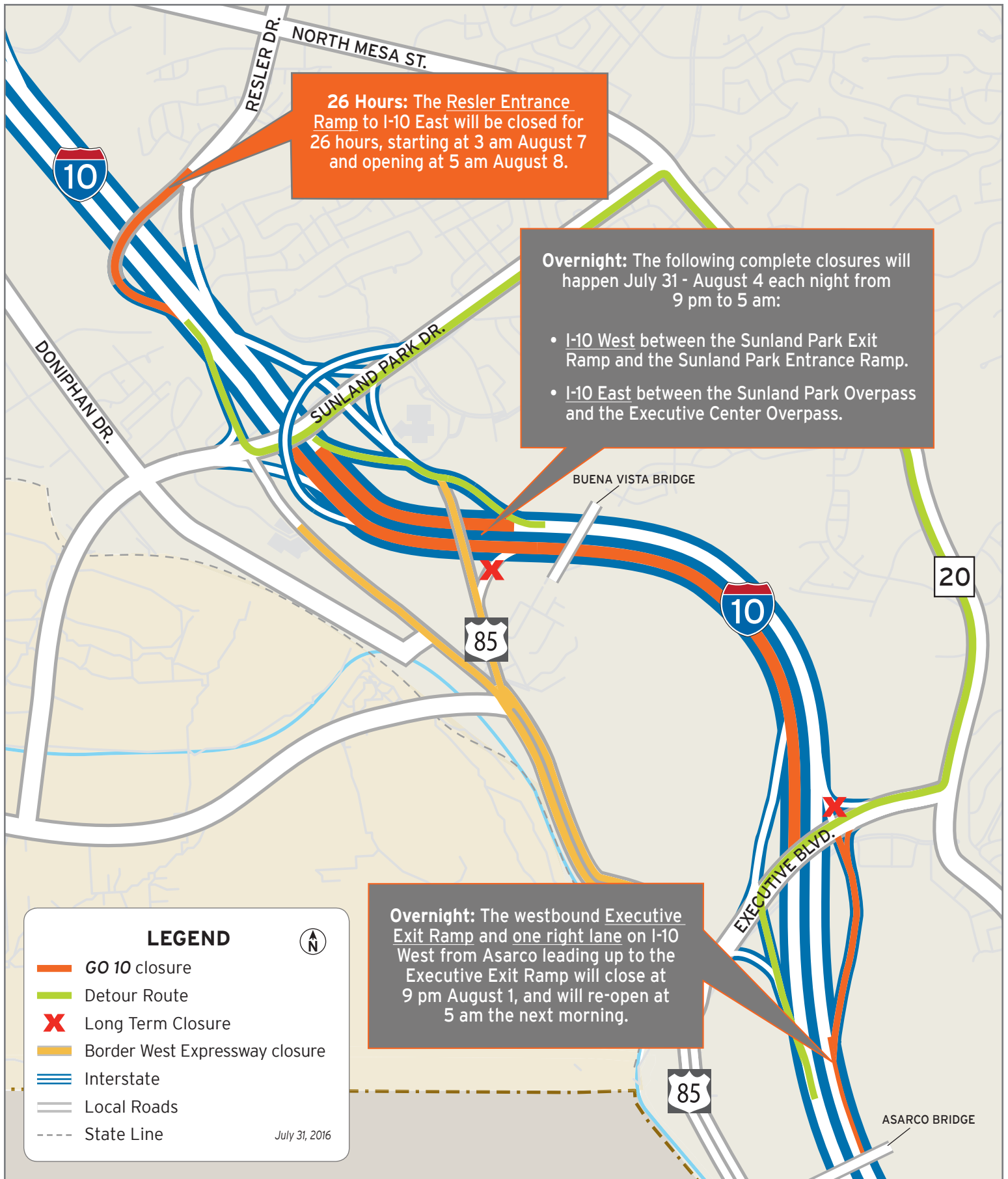
www.go10elpaso.com | facebook.com/go10elpaso | twitter.com/go10ep



Sunday closures on I-10

Map 1 of 4

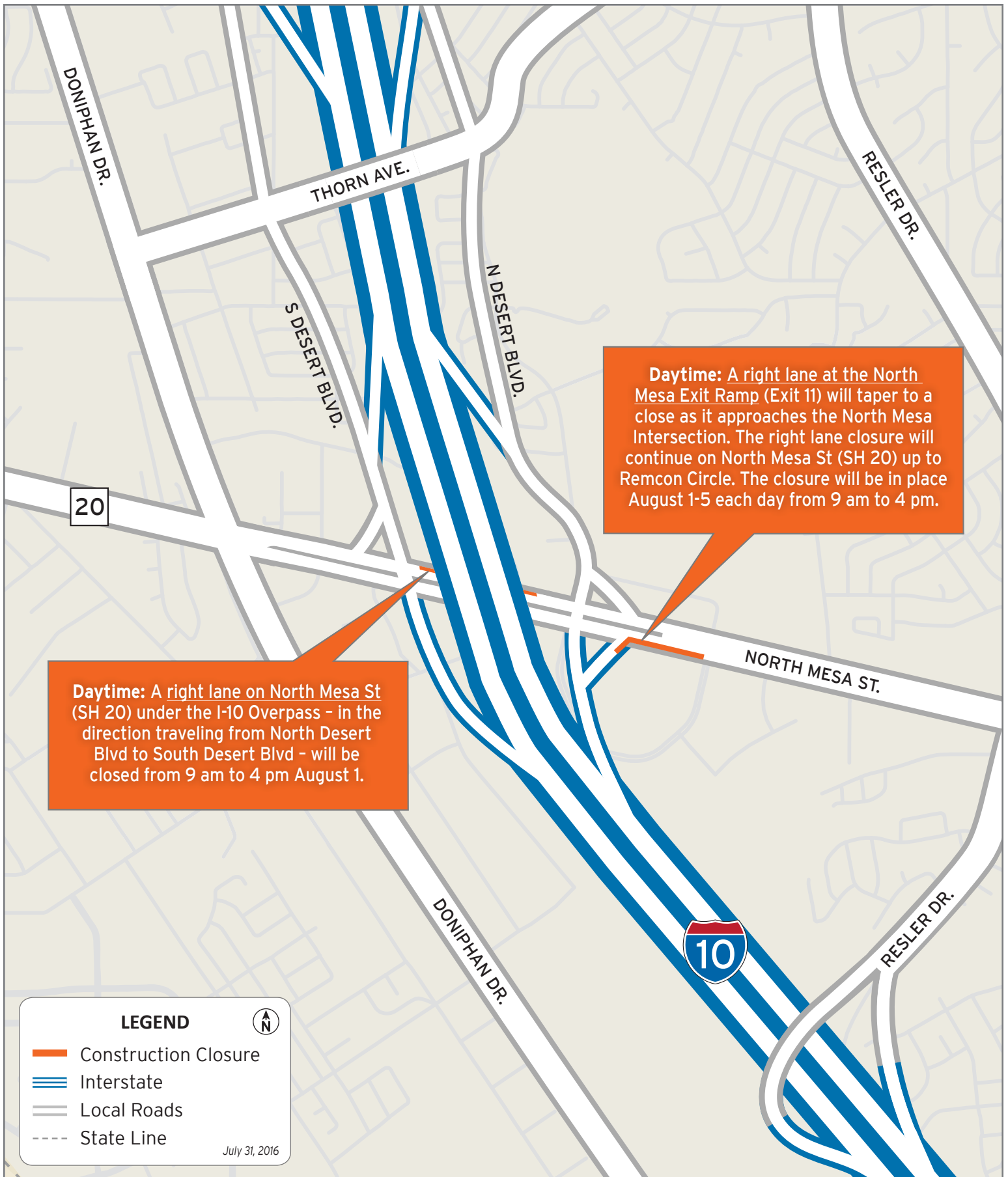




Closures on I-10

Map 2 of 4

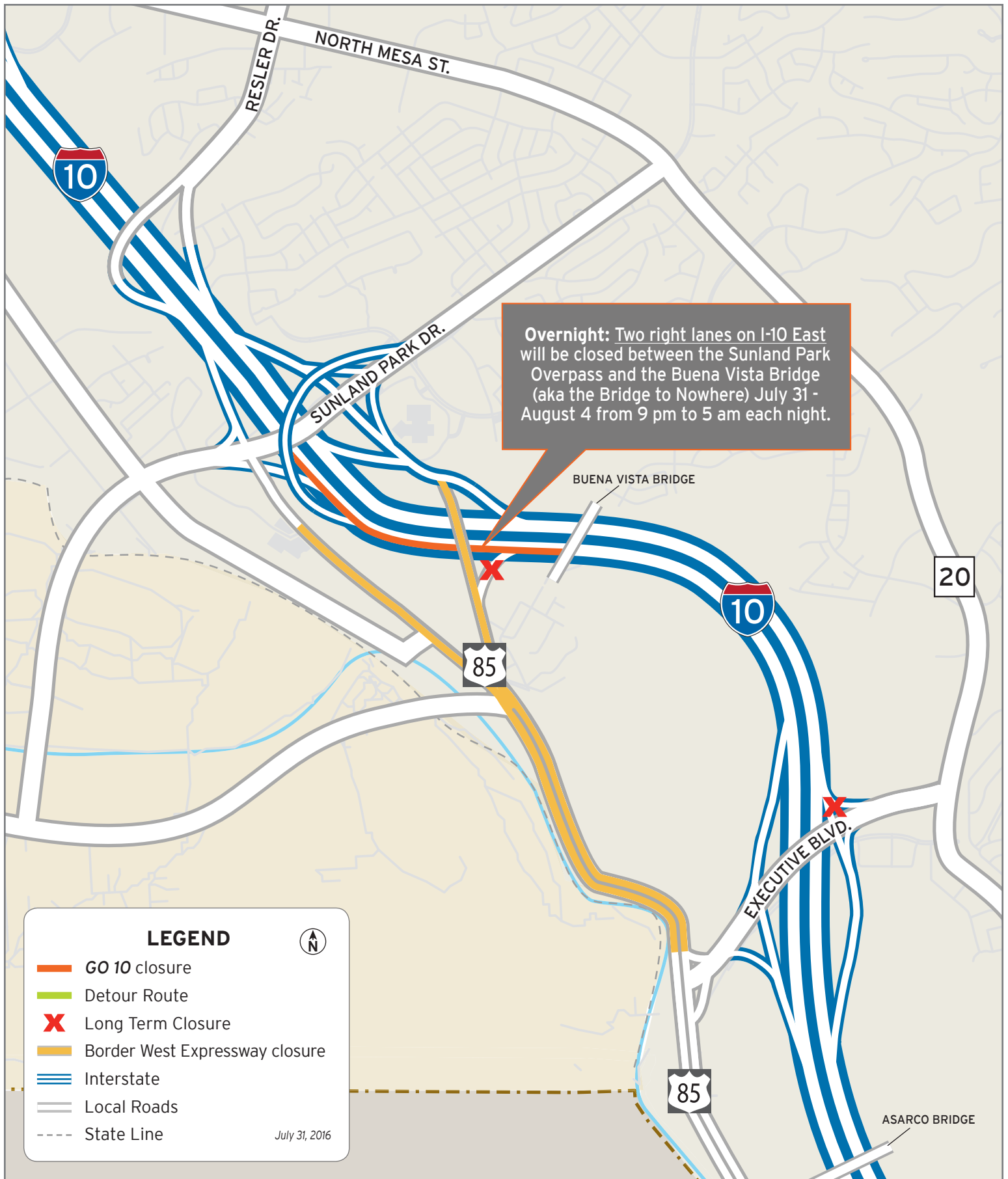




Closures at North Mesa Street

Map 3 of 4





Closures on I-10

Map 4 of 4

