



a TxDOT Project
For immediate release

NEWS RELEASE

EL PASO DISTRICT

Blanca Del Valle
(915) 790-4341
Blanca.DelValle@txdot.gov

July 22, 2016

Crews will demolish the US 85 Bridge this Sunday. This operation will require the shutdown of I-10 in both directions for 1 night.

3 AM Sunday

- I-10 East between the Sunland Park Overpass and the Executive Center Overpass will be completely closed.
- Concurrently, two left lanes on I-10 West between the Executive Center Overpass and the Sunland Park Exit will be closed.

The above Sunday closures will begin at 3 a.m. on Sunday, **July 24** – remaining closed throughout the day and night on July 24 – and will open the next morning at 5 a.m. on Monday, **July 25**.

DETAILS -- This 26-hour closure is necessary while crews demolish the westbound Paisano Drive (US 85) Bridge over I-10. In addition to demolition, crews will also be setting beams, repairing potholes on I-10, and working on a nearby culvert. This closure was initially announced on July 8th.

DETOUR -- Eastbound vehicles will exit at Sunland Park Drive, take a left on Sunland Park Drive to North Mesa Street (SH 20), then take a right on North Mesa Street (SH 20) to Executive Center Boulevard, and finally turn right on Executive Center Boulevard. Vehicles will be able to re-enter I-10 East from Executive Center Boulevard. Police officers will be stationed along the detour route to help keep traffic moving. [Illustrated on map 1]

9 PM Sunday

I-10 West from the Sunland Park Exit to the Sunland Park Entrance Ramp will be completely closed at the same time as the I-10 East closure starting at 9 p.m. on Sunday, **July 24**, re-opening at 5 a.m. Monday, **July 25**.

DETAILS -- This night time closure of I-10 West is necessary for the hanging of beams and the staging of a crane. The beams will be part of the new westbound Paisano Drive (US 85) Bridges over I-10.

DETOUR -- Westbound vehicles will take the Sunland Park Exit and re-enter I-10 West just prior to the Sunland Park Overpass. Detoured vehicles will not have to stop at traffic lights or pass through the Sunland Park Intersection. [Illustrated on map 1]

page 1 of 3



The Texas Department of Transportation is responsible for maintaining 80,000 miles of road and for supporting aviation, rail, and public transportation across the state. GO 10 is a \$158 million reconstruction of Interstate 10 that spans approximately 6 miles on El Paso's West Side between Executive Center Boulevard and North Mesa Street. GO 10 features the addition of collector-distributor lanes and a new direct connector with Border West Expressway.

Maintain a Safe System • Address Congestion • Best-in-Class State Agency • Connect Texas Communities

An Equal Opportunity Employer

www.go10elpaso.com | facebook.com/go10elpaso | twitter.com/go10ep



a TxDOT Project
For immediate release

NEWS RELEASE

EL PASO DISTRICT

Blanca Del Valle
(915) 790-4341
Blanca.DelValle@txdot.gov

I-10 East & West

Overnight

- I-10 West will be completely closed between the Sunland Park Exit Ramp and the Sunland Park Entrance Ramp.
- Concurrently, I-10 East will be completely closed between the Sunland Park Overpass and the Executive Center Overpass.

The above overnight closures will occur over four nights from 9 p.m. to 5 a.m. on Monday, **July 25** through Thursday, **July 28**. [Illustrated on map 2]

DETAILS – The overnight closures July 25-28 are necessary while crews set beams for the new westbound Paisano Drive (US 85) Bridges over I-10.

DETOUR -- Eastbound vehicles will exit at Sunland Park Drive, take a left on Sunland Park Drive to North Mesa Street (SH 20), then take a right on North Mesa Street (SH 20) to Executive Center Boulevard, and finally turn right on Executive Center Boulevard. Vehicles will be able to re-enter I-10 East from Executive Center Boulevard. Police officers will be stationed along the detour route to help keep traffic moving. [Illustrated on map 2]

I-10 East

Overnight

The two right lanes on I-10 East will be closed from the Buena Vista Bridge to the Executive Center Overpass from 9 p.m. to 5 a.m. for three nights on Wednesday, **July 27**, Thursday, **July 28**, and Sunday, **July 31**. Crews will continue paving new outside lanes along this section of I-10.

North Mesa

Overnight

The left lane on I-10 East and the left lane I-10 West will be closed on the I-10 Bridge that spans over North Mesa Street (SH 20) from 9 p.m. to 5 a.m. for two nights on Wednesday, **July 27** and Thursday, **July 28**. Crews will be setting barrier to prepare for increased bridge work. [Illustrated on map 3]

page 2 of 3



The Texas Department of Transportation is responsible for maintaining 80,000 miles of road and for supporting aviation, rail, and public transportation across the state. GO 10 is a \$158 million reconstruction of Interstate 10 that spans approximately 6 miles on El Paso's West Side between Executive Center Boulevard and North Mesa Street. GO 10 features the addition of collector-distributor lanes and a new direct connector with Border West Expressway.

Maintain a Safe System • Address Congestion • Best-in-Class State Agency • Connect Texas Communities

An Equal Opportunity Employer

www.go10elpaso.com | facebook.com/go10elpaso | twitter.com/go10ep



a TxDOT Project
For immediate release

NEWS RELEASE

EL PASO DISTRICT

Blanca Del Valle
(915) 790-4341
Blanca.DelValle@txdot.gov

ADVANCED NOTICE FOR THE FOLLOWING WEEK

Sunday

I-10 West will be completely closed between the Sunland Park Exit Ramp and the Sunland Park Entrance Ramp from 3 a.m. on Sunday, **July 31** – remaining closed throughout the day and night on July 31 – and will open the next morning at 5 a.m. on Monday, **August 1**. Crews will continue with demolition of the existing Paisano Drive (US 85) Bridge over I-10. This closure was initially announced July 8th. [Illustrated on map 2]

page 3 of 3

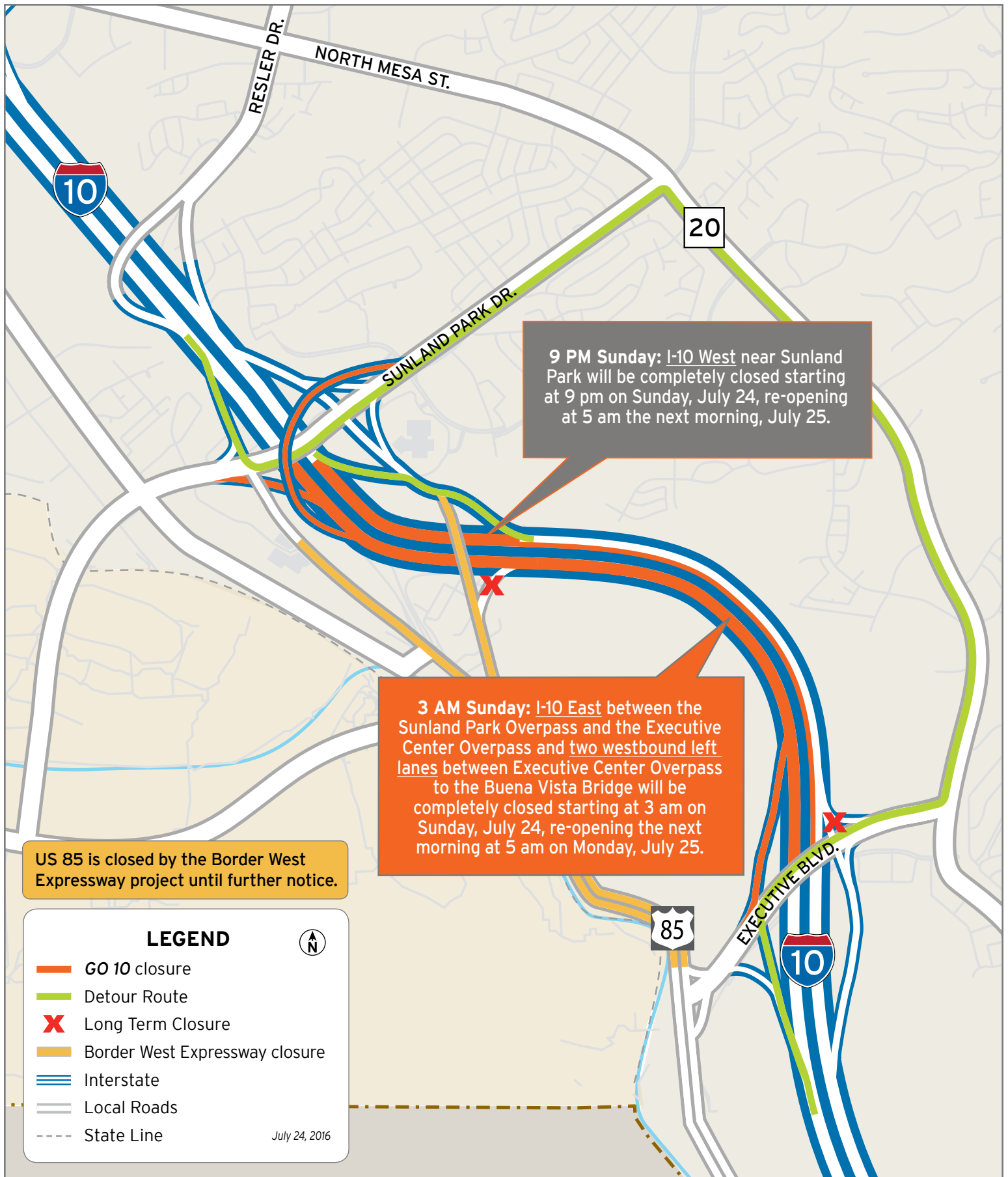


The Texas Department of Transportation is responsible for maintaining 80,000 miles of road and for supporting aviation, rail, and public transportation across the state. GO 10 is a \$158 million reconstruction of Interstate 10 that spans approximately 6 miles on El Paso's West Side between Executive Center Boulevard and North Mesa Street. GO 10 features the addition of collector-distributor lanes and a new direct connector with Border West Expressway.

Maintain a Safe System • Address Congestion • Best-in-Class State Agency • Connect Texas Communities

An Equal Opportunity Employer

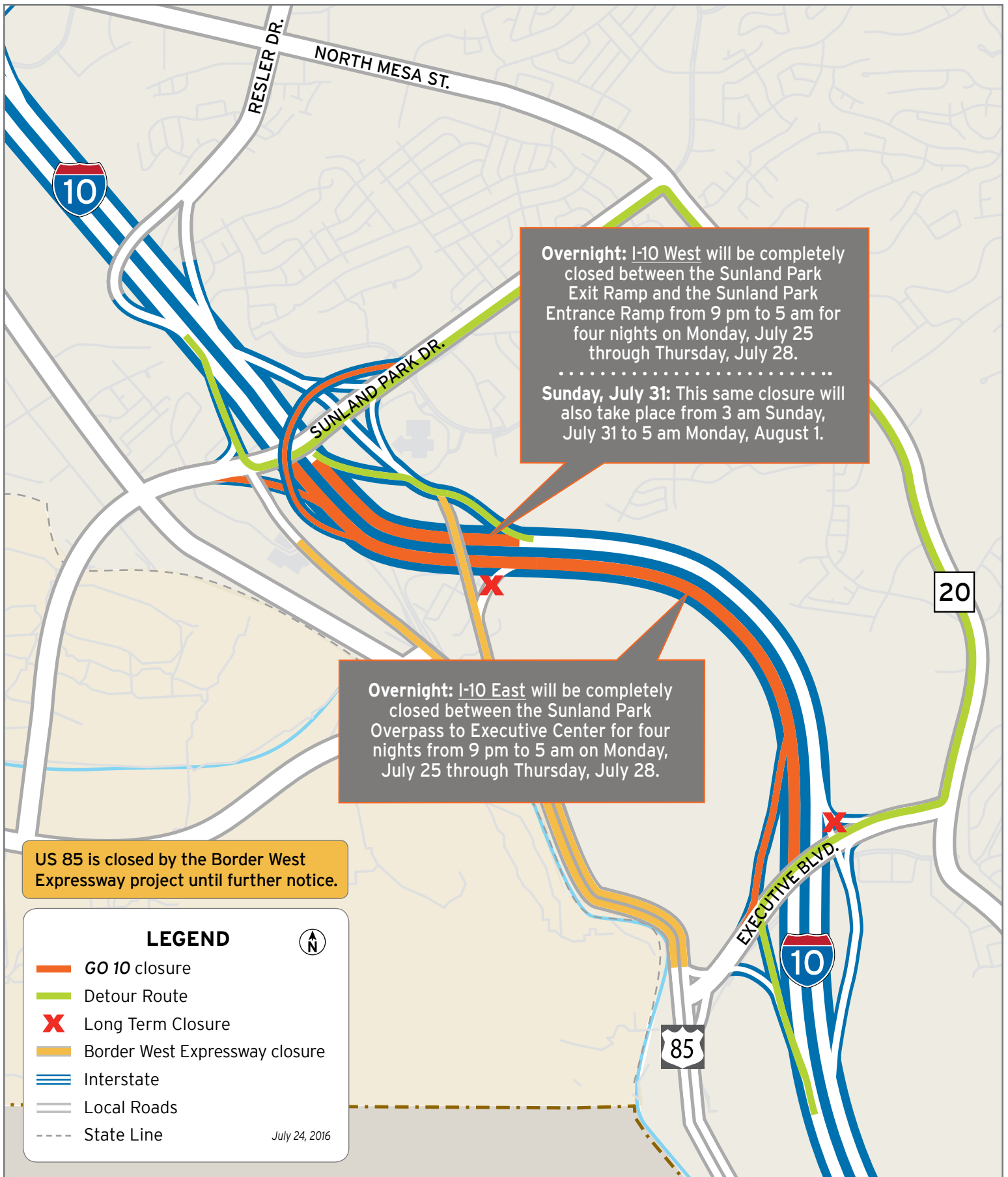
www.go10elpaso.com | facebook.com/go10elpaso | twitter.com/go10ep



Sunday closures on I-10

Map 1 of 3

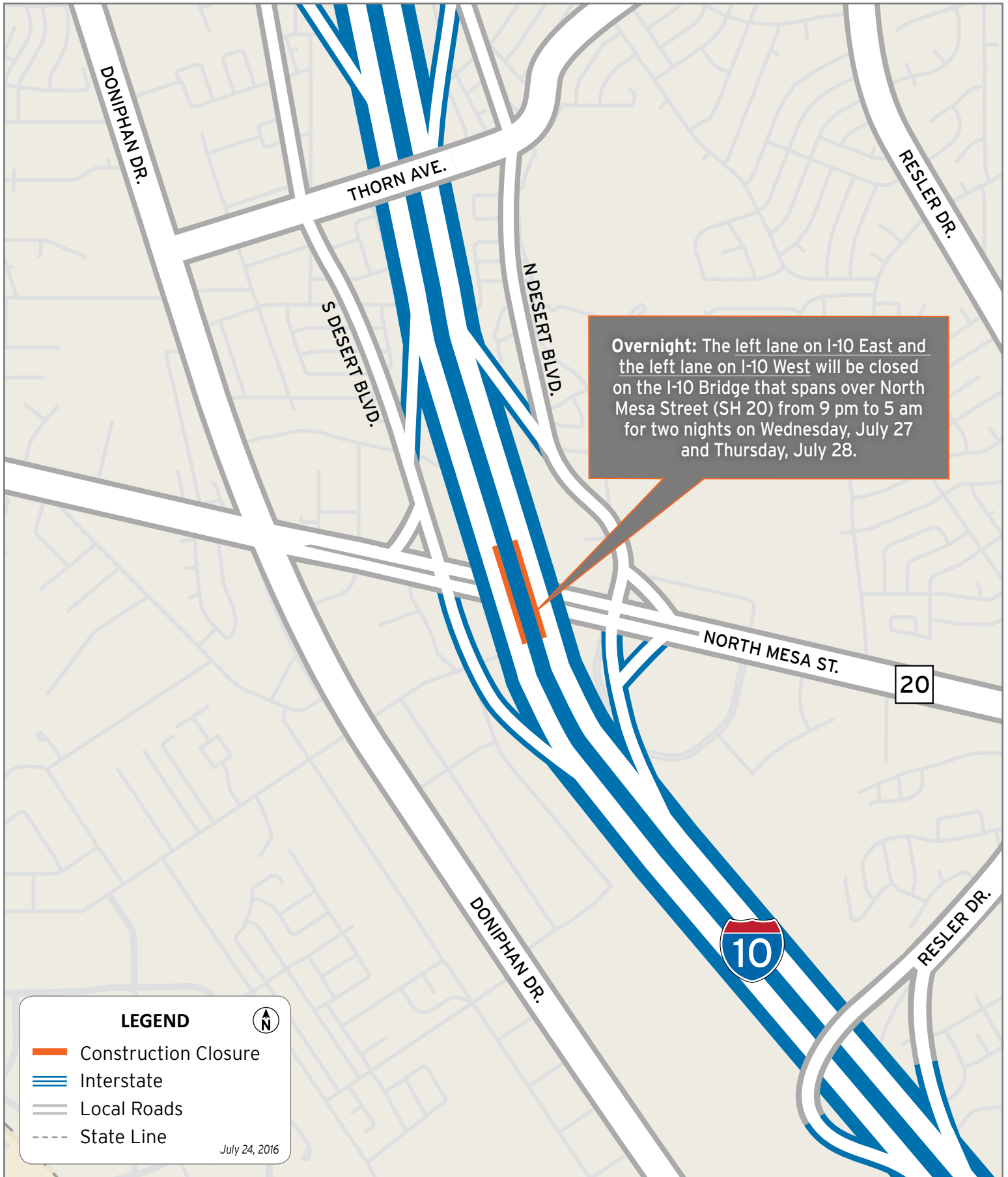




Closures on I-10

Map 2 of 3





Closures at North Mesa Street

Map 3 of 3

