



NEWS RELEASE

EL PASO DISTRICT

Blanca Del Valle

(915) 790-4341

Blanca.DelValle@txdot.gov

a TxDOT Project

For immediate release

July 15, 2016

I-10 West

Overnight

I-10 West will be completely closed between the Sunland Park Exit Ramp and the Sunland Park Entrance Ramp from 9 p.m. to 5 a.m. for five nights on Sunday, **July 17** through Thursday, **July 21**. Crews will be setting beams for the new westbound Paisano Drive (US 85) Bridge over I-10. [Illustrated on map 1]

During the same five-night period, I-10 West will be reduced to one lane between the Executive Center Overpass and the Sunland Park Exit Ramp. Crews will continue re-stripping the main lanes to shift them toward the inside shoulder. [Illustrated on map 1]

Daytime

The right lane on I-10 West between the Asarco Bridge and the Buena Vista Bridge will be closed from 9 a.m. to 4 p.m. for two days on Monday, **July 18** and Tuesday, **July 19**. Crews will be moving barrier. [Illustrated on map 2]

I-10 East

Overnight

The two right lanes on I-10 East will be closed from the Buena Vista Bridge to the Executive Center Overpass from 9 p.m. to 5 a.m. for two nights on Wednesday, **July 20** and Thursday, **July 21**. Crews will continue paving new lanes along this section of I-10. [Illustrated on map 1]

North Mesa

Daytime

The right lane on North Mesa Street (SH 20), in the direction from South Desert Blvd to North Desert Blvd, will be closed under the I-10 Bridge from 9 a.m. to 4 p.m. on Monday, **July 18**. Crews will be working on fiber cables. [Illustrated on map 3]

Overnight

The left lane on North Desert Blvd will be closed between the North Mesa Street (SH 20) and the Mesa Entrance Ramp from 9 p.m. to 5 a.m. for two nights on Monday, **July 18** and Tuesday, **July 19**. Crews will be setting barrier to prepare for more bridge work. [Illustrated on map 3]

page 1 of 2



The Texas Department of Transportation is responsible for maintaining 80,000 miles of road and for supporting aviation, rail, and public transportation across the state. GO 10 is a \$158 million reconstruction of Interstate 10 that spans approximately 6 miles on El Paso's West Side between Executive Center Boulevard and North Mesa Street. GO 10 features the addition of collector-distributor lanes and a new direct connector with Border West Expressway.

Maintain a Safe System • Address Congestion • Best-in-Class State Agency • Connect Texas Communities

An Equal Opportunity Employer

www.go10elpaso.com | facebook.com/go10elpaso | twitter.com/go10ep



a TxDOT Project
For immediate release

NEWS RELEASE

EL PASO DISTRICT

Blanca Del Valle
(915) 790-4341
Blanca.DelValle@txdot.gov

The following closures were included in last week's list of closures. These closures are necessary while crews demolish the westbound Paisano Drive (US 85) Overpass that spans across I-10.

US 85 Overpass

Sunday

I-10 East will be completely closed between the Sunland Park Overpass and the Executive Center Overpass from 3 a.m. on Sunday, **July 24** – remaining closed throughout the day and night on July 24 – and will open the next morning at 5 a.m. on Monday, **July 25**. [Illustrated on map 4]

Sunday

I-10 West will be completely closed between the Sunland Park Exit Ramp and the Sunland Park Entrance Ramp from 3 a.m. on Sunday, **July 31** – remaining closed throughout the day and night on July 31 – and will open the next morning at 5 a.m. on Monday, **August 1**. Crews will continue with demolition of the existing Paisano Drive (US 85) Overpass that spans I-10. [Illustrated on map 4]

Read more about the work taking place on I-10 at Paisano Drive (US 85) at bit.ly/TimSays2.

page 2 of 2

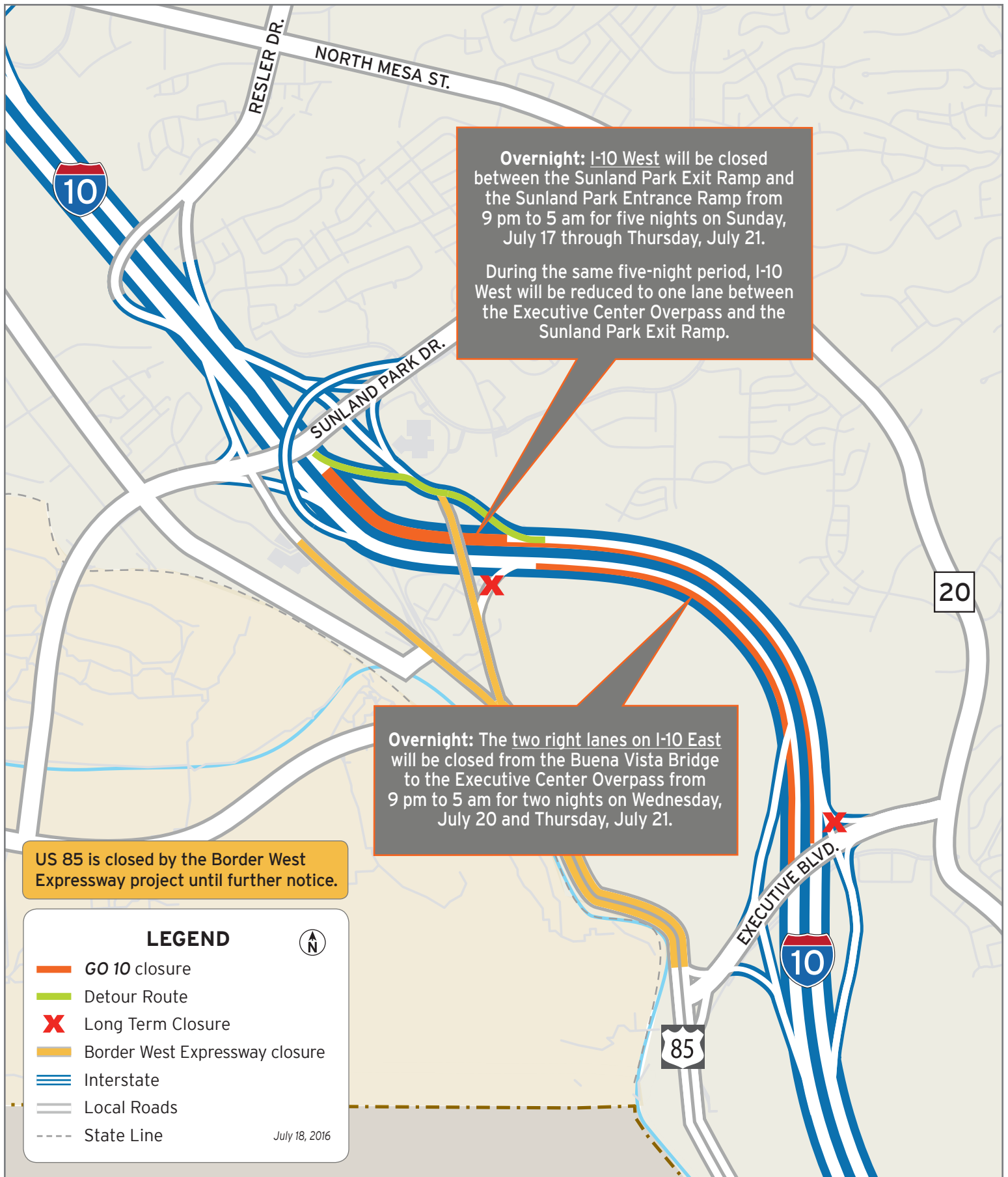


The Texas Department of Transportation is responsible for maintaining 80,000 miles of road and for supporting aviation, rail, and public transportation across the state. GO 10 is a \$158 million reconstruction of Interstate 10 that spans approximately 6 miles on El Paso's West Side between Executive Center Boulevard and North Mesa Street. GO 10 features the addition of collector-distributor lanes and a new direct connector with Border West Expressway.

Maintain a Safe System • Address Congestion • Best-in-Class State Agency • Connect Texas Communities

An Equal Opportunity Employer

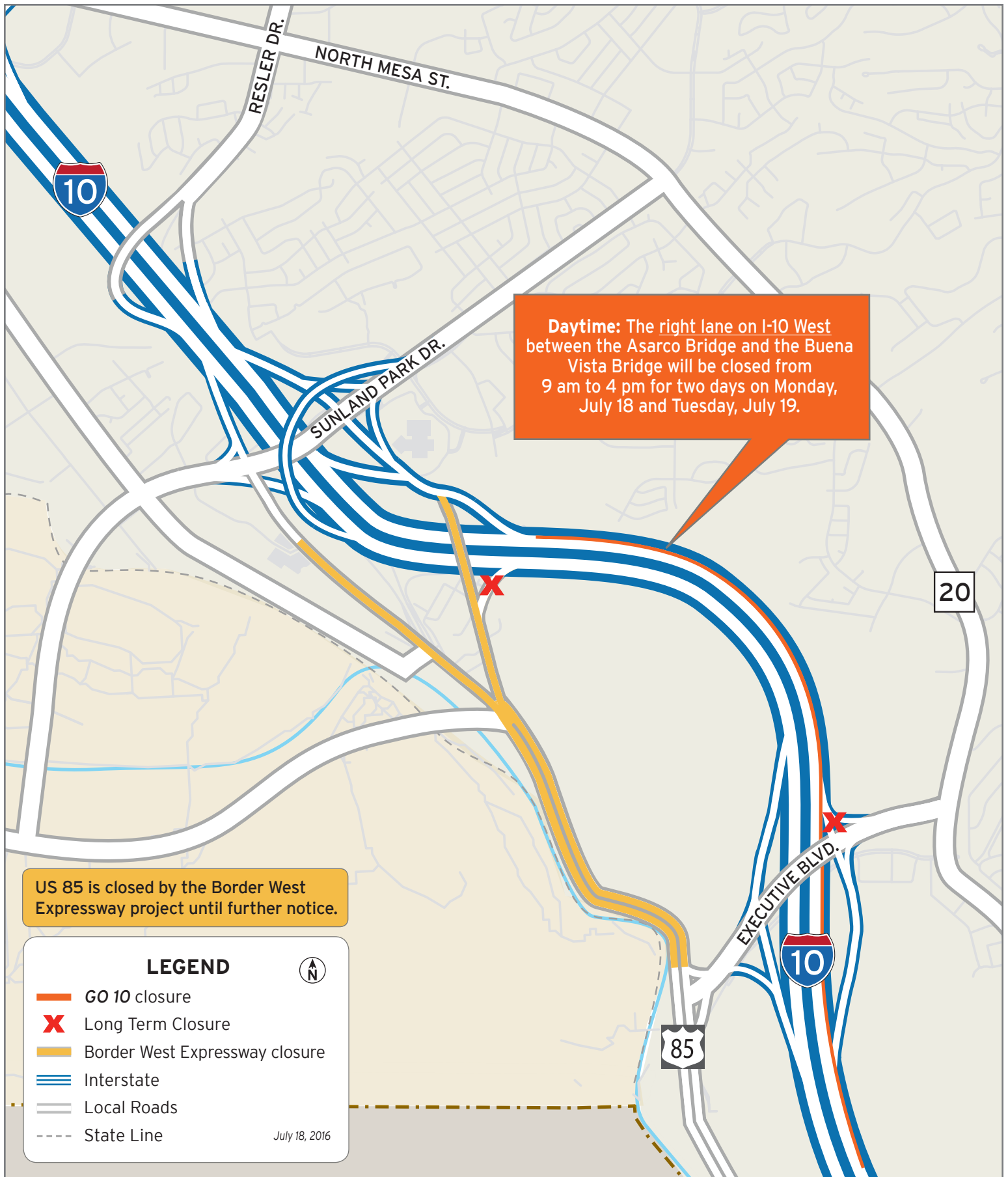
www.go10elpaso.com | facebook.com/go10elpaso | twitter.com/go10ep



Lane closures on I-10

Map 1 of 4

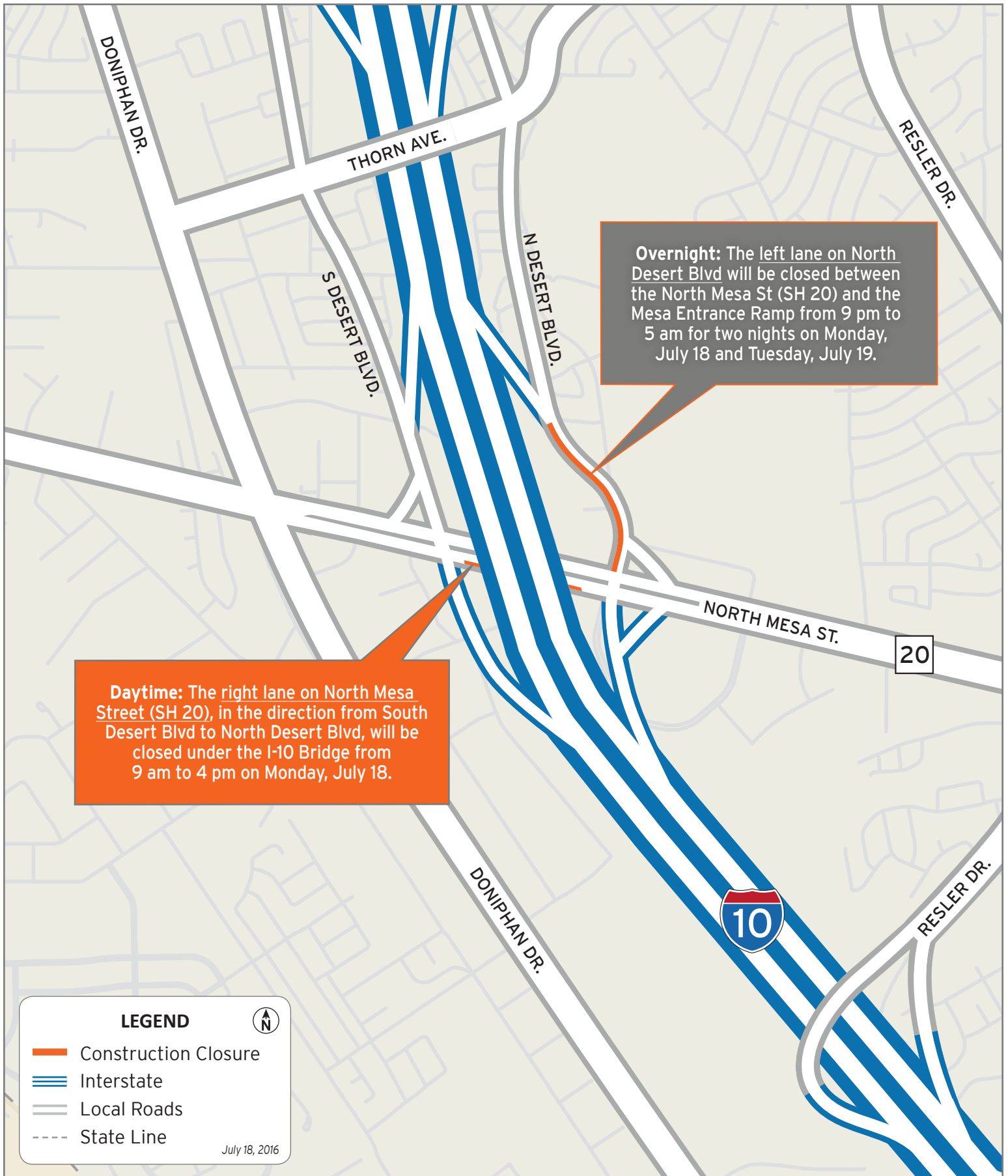




Lane closures on I-10

Map 2 of 4

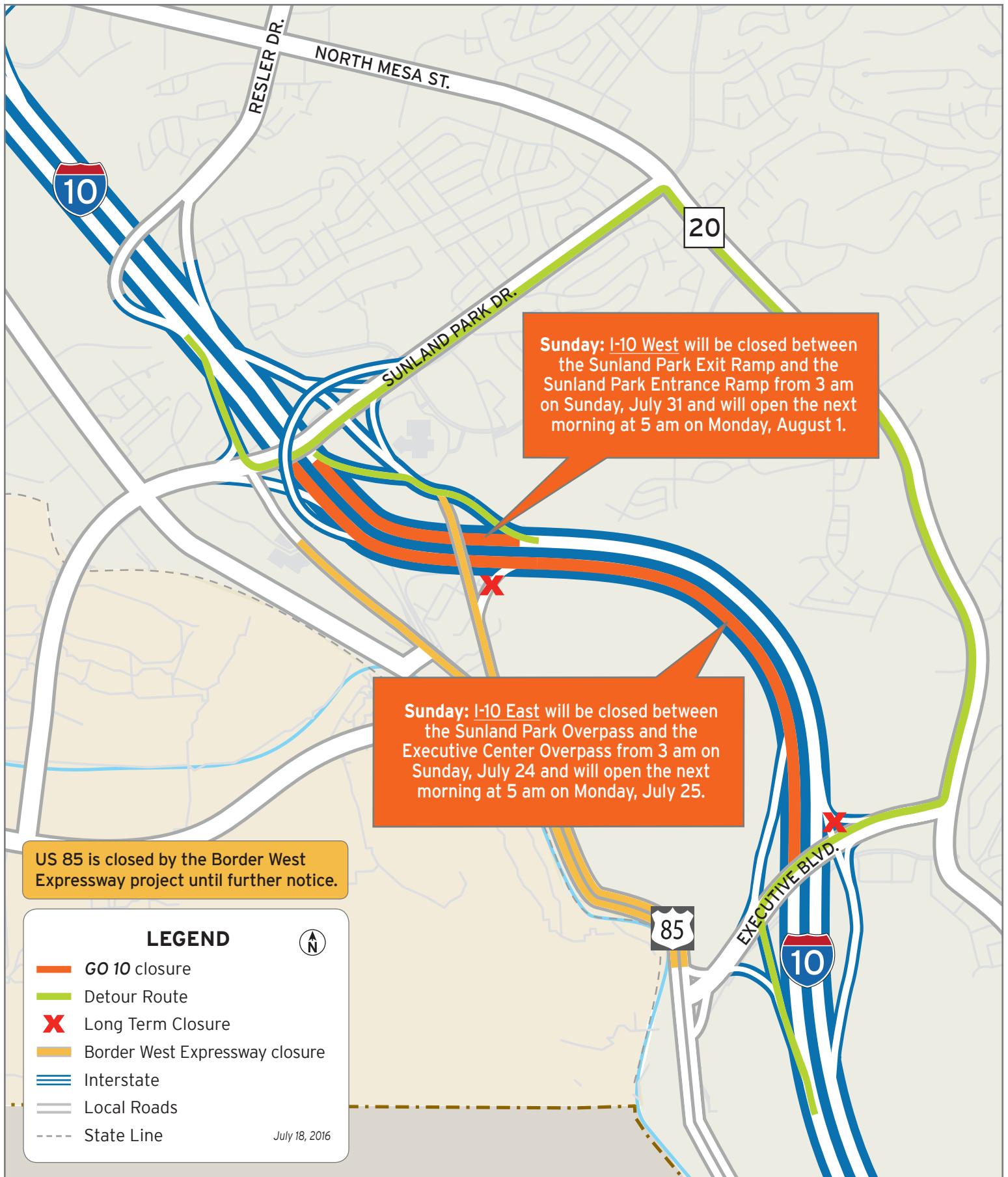




Closures at North Mesa Street

Map 3 of 4





Sunday closures on I-10

Map 4 of 4

