



**a TxDOT Project**  
For immediate release

## NEWS RELEASE

### EL PASO DISTRICT

Blanca Del Valle  
(915) 790-4341  
Blanca.DelValle@txdot.gov

July 8, 2016

### Over four nights and two Sundays, crews will demolish the US 85 bridge over I-10

All the while, keeping I-10 open during peak drive times

#### US 85 Overpass

##### Four Nights

I-10 West will be completely closed between the Sunland Park Exit Ramp and the Sunland Park Overpass for four nights as follows:

- > 9 p.m. Monday, **July 11** to 5 a.m. the following morning
- > 9 p.m. Tuesday, **July 12** to 5 a.m. the following morning
- > 9 p.m. Wednesday, **July 13** to 5 a.m. the following morning
- > 9 p.m. Thursday, **July 14** to 5 a.m. the following morning

Crews will be hanging beams over I-10. This work is necessary for the construction of the new I-10 direct connector ramps with Paisano Drive (US 85).

During the same four nights listed above, I-10 West will be reduced to one lane between the Executive Center Overpass and the Sunland Park Exit Ramp. Crews will be re-striping the main lanes in order to shift them toward the inside shoulder. [This closure is illustrated on map #1.]

##### Sunday - Two-Week Notice

I-10 East will be completely closed between the Sunland Park Overpass and the Executive Center Overpass from 3 a.m. on Sunday, **July 24** – remaining closed throughout the day and night on July 24 – and will open the next morning at 5 a.m. on Monday, **July 25**. Crews will be demolishing a portion of the existing Paisano Drive (US 85) Overpass that spans I-10. [Illustration will be attached with next week's list of closures.]

##### Sunday - Three-Week Notice

I-10 West will be completely closed between the Sunland Park Exit Ramp and the Sunland Park Entrance Ramp from 3 a.m. on Sunday, **July 31** – remaining closed throughout the day and night on July 31 – and will open the next morning at 5 a.m. on Monday, **August 1**. Crews will continue with demolition of the existing Paisano Drive (US 85) Overpass that spans I-10. [Illustration will be attached with next week's list of closures.]

Thank you for your patience. Read more about the work taking place on I-10 near Sunland Park at [bit.ly/TimSays2](http://bit.ly/TimSays2).

- page 1 of 3 -



The Texas Department of Transportation is responsible for maintaining 80,000 miles of road and for supporting aviation, rail, and public transportation across the state. GO 10 is a \$158 million reconstruction of Interstate 10 that spans approximately 6 miles on El Paso's West Side between Executive Center Boulevard and North Mesa Street. GO 10 features the addition of collector-distributor lanes and a new direct connector with Border West Expressway.

Maintain a Safe System • Address Congestion • Best-in-Class State Agency • Connect Texas Communities

An Equal Opportunity Employer

[www.go10elpaso.com](http://www.go10elpaso.com) | [facebook.com/go10elpaso](https://facebook.com/go10elpaso) | [twitter.com/go10ep](https://twitter.com/go10ep)



**a TxDOT Project**  
For immediate release

# NEWS RELEASE

## EL PASO DISTRICT

Blanca Del Valle  
(915) 790-4341  
Blanca.DelValle@txdot.gov

### I-10 West

#### Daytime

The left lane on I-10 West will be closed between the Executive Center Overpass and the Buena Vista Bridge (aka the Bridge to Nowhere) from 9 a.m. to 4 p.m. on Monday, **July 11**. Crews will be re-stripping lanes. [This closure is illustrated on map #2.]

#### Daytime

The right lane on I-10 West between the Asarco Bridge and the Buena Vista Bridge will be closed from 9 a.m. to 4 p.m. for two days on Thursday, **July 14** and Friday, **July 15**. Crews will be re-stripping lanes. [This closure is illustrated on map #3.]

### I-10 East

#### Nighttime

The two right lanes on I-10 East will be closed from the Sunland Park Overpass to the Executive Center Overpass from 9 p.m. to 5 a.m. each night Tuesday, **July 12** to Thursday, **July 14** as follows:

- > 9 p.m. Tuesday, **July 12** to 5 a.m. the following morning
- > 9 p.m. Wednesday, **July 13** to 5 a.m. the following morning
- > 9 p.m. Thursday, **July 14** to 5 a.m. the following morning

Crews will be paving new lanes to this section of I-10. [This closure is illustrated on map #3.]

#### Daytime

The left lane on I-10 East will be closed between the Sunland Park Overpass and approximately 500 feet past the Buena Vista Bridge (aka the Bridge to Nowhere) from 9 a.m. to 4 p.m. for three days Monday, **July 11** through Wednesday, **July 13** as follows:

- > 9 a.m. to 4 p.m. Monday, **July 11**
- > 9 a.m. to 4 p.m. Tuesday, **July 12**
- > 9 a.m. to 4 p.m. Wednesday, **July 13**

Crews will be working on fiber cables. [This closure is illustrated on map #2.]

#### Nighttime

The I-10 East Mesa Exit Ramp (Exit 11) will be closed and South Desert Blvd frontage road between Thorn Avenue and North Mesa Street (SH 20) will be closed from 9 p.m. to 5 a.m. on Tuesday, **July 12**. Crews will be pouring bridge deck. [This closure is illustrated on map #4.]

- page 2 of 3 -



The Texas Department of Transportation is responsible for maintaining 80,000 miles of road and for supporting aviation, rail, and public transportation across the state. GO 10 is a \$158 million reconstruction of Interstate 10 that spans approximately 6 miles on El Paso's West Side between Executive Center Boulevard and North Mesa Street. GO 10 features the addition of collector-distributor lanes and a new direct connector with Border West Expressway.

Maintain a Safe System • Address Congestion • Best-in-Class State Agency • Connect Texas Communities

An Equal Opportunity Employer

[www.go10elpaso.com](http://www.go10elpaso.com) | [facebook.com/go10elpaso](https://facebook.com/go10elpaso) | [twitter.com/go10ep](https://twitter.com/go10ep)



**a TxDOT Project**  
For immediate release

## NEWS RELEASE

### EL PASO DISTRICT

Blanca Del Valle  
(915) 790-4341  
Blanca.DelValle@txdot.gov

#### I-10 Both Directions

##### Nighttime

The left lane on I-10 in both directions at the North Mesa Interchange will be closed from 9 p.m. to 5 a.m. on Sunday, **July 10**. Crews will be placing concrete barrier in preparation for the re-construction of the I-10 Bridge over North Mesa Street (SH 20). [\[This closure is illustrated on map #4.\]](#)

- page 3 of 3 -

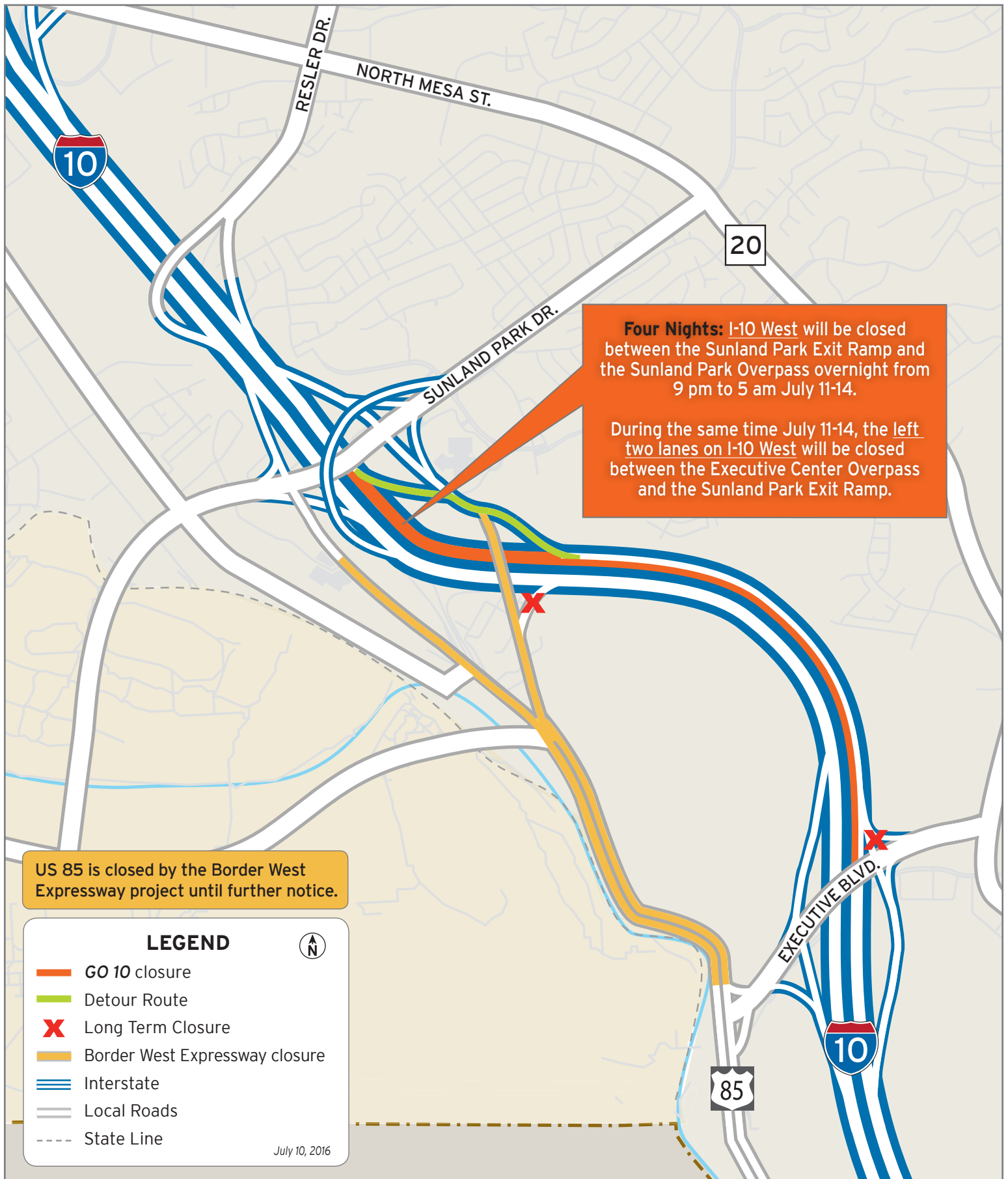


The Texas Department of Transportation is responsible for maintaining 80,000 miles of road and for supporting aviation, rail, and public transportation across the state. GO 10 is a \$158 million reconstruction of Interstate 10 that spans approximately 6 miles on El Paso's West Side between Executive Center Boulevard and North Mesa Street. GO 10 features the addition of collector-distributor lanes and a new direct connector with Border West Expressway.

Maintain a Safe System • Address Congestion • Best-in-Class State Agency • Connect Texas Communities

*An Equal Opportunity Employer*

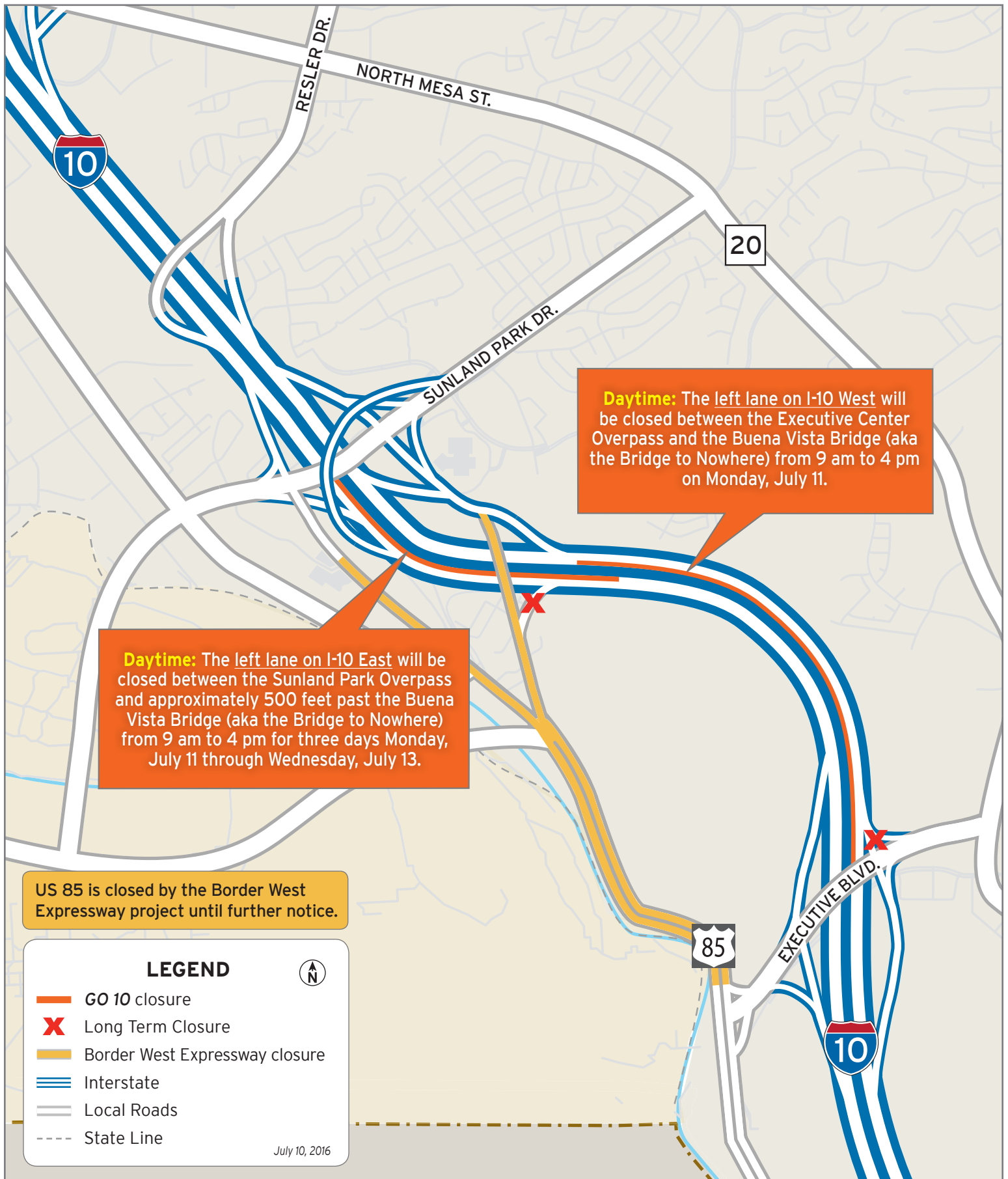
[www.go10elpaso.com](http://www.go10elpaso.com) | [facebook.com/go10elpaso](https://facebook.com/go10elpaso) | [twitter.com/go10ep](https://twitter.com/go10ep)



# Overnight closures on I-10 West

Map 1 of 4

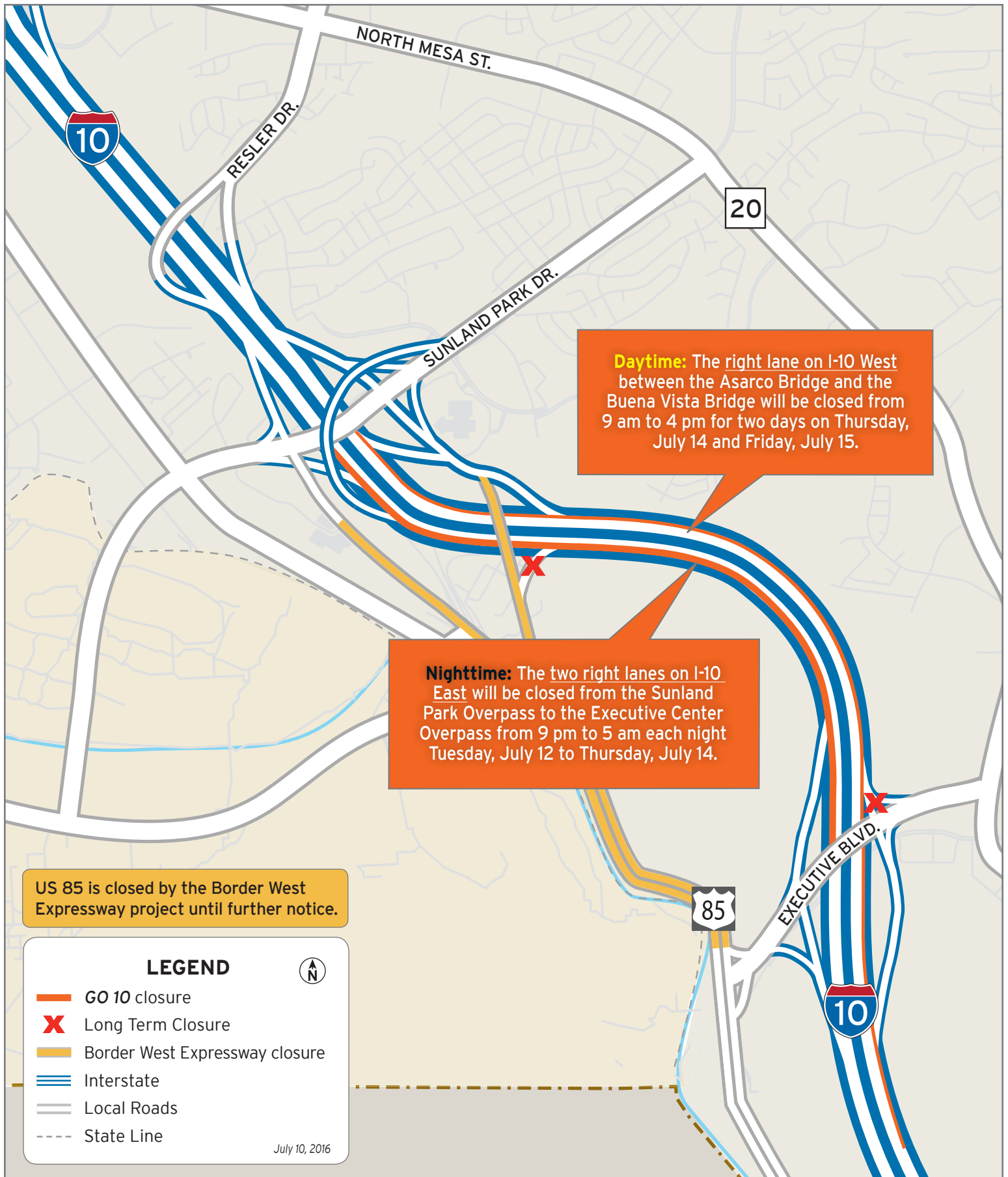




# Lane closures on I-10

Map 2 of 4

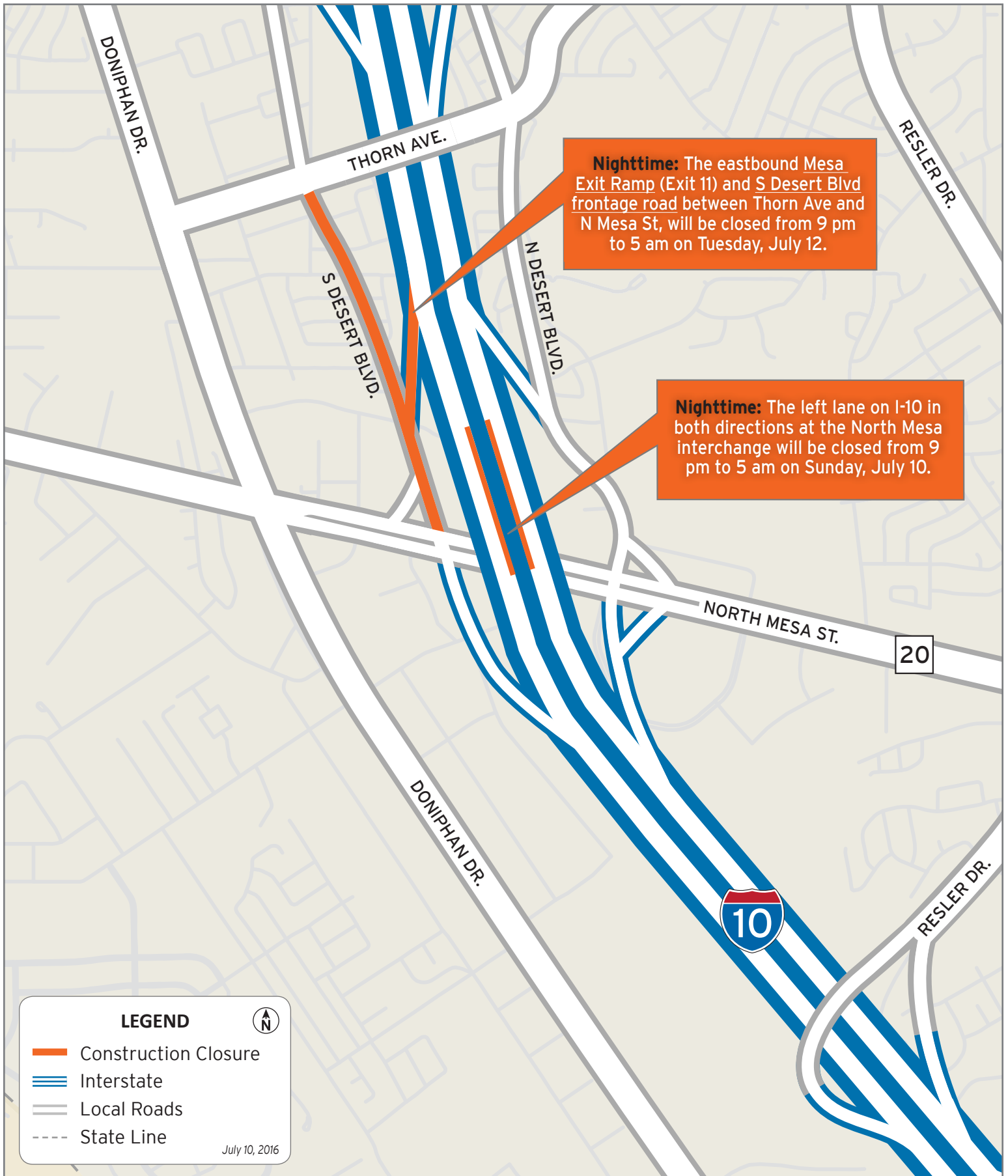




# Lane closures on I-10

Map 3 of 4





# I-10 closures at North Mesa Street

Map 4 of 4

