



**a TxDOT Project**  
For immediate release

# NEWS RELEASE

**EL PASO DISTRICT**

Blanca Del Valle  
(915) 790-4341  
Blanca.DelValle@txdot.gov

August 5, 2016

## **Westbound exit-only lane at Executive scheduled to open Aug 8 Bridge to Nowhere scheduled for demolition Aug 14**

### **I-10 West**

#### **Overnight**

The following will be closed on Monday, **Aug. 8** from 9 p.m. to 5 a.m. the next morning:

- Two right lanes on I-10 West between the Schuster Exit and the Executive Center Exit
- I-10 westbound Executive Center Exit Ramp (Exit 16)

Crews will be opening up the westbound exit-only lane that leads to the Executive Center Exit Ramp. Motorists should use caution when approaching the newly opened, re-striped exit-only lane. [Map 2]

#### **Overnight**

I-10 West will be completely closed at Sunland Park on Tuesday, **Aug. 9** from 9 p.m. to 5 a.m. the next morning. Crews will be working on the Paisano (US 85) Bridge over I-10. [Map 2]

### **I-10 East**

#### **Overnight**

I-10 East will be completely closed between the Sunland Park Overpass and Executive Center Overpass Monday, **Aug. 8** through Thursday, **Aug. 11** each night from 9 p.m. to 5 a.m. Crews will be setting the last Paisano (US 85) Bridge beam over I-10. [Map 2]

Detour: Eastbound vehicles will exit at Sunland Park (Exit 13), turn left on Sunland Park Dr, turn right on North Mesa St (SH 20), and turn right on Executive Center Blvd. Vehicles will be able to re-enter I-10 East from Executive Center Blvd. Westbound vehicles will exit Sunland Park (Exit 13) and re-enter I-10 West prior to the Sunland Park Overpass.

#### **Overnight**

Two lanes on I-10 East will close between the Sunland Park Overpass and the Buena Vista Bridge (aka the Bridge to Nowhere) on Thursday, **Aug. 11** from 9 p.m. to 5 a.m. the next morning. Crews will be working on the Paisano (US 85) Bridge over I-10. [No map]

### **North Mesa**

#### **Overnight**

The Mesa Entrance Ramp to I-10 East will close on Monday, **Aug. 8** from 9 p.m. to 5 a.m. Crews will be moving barrier and re-striping the lanes. [Map 1]

Page 1 of 2



The Texas Department of Transportation is responsible for maintaining 80,000 miles of road and for supporting aviation, rail, and public transportation across the state. GO 10 is a \$158 million reconstruction of Interstate 10 that spans approximately 6 miles on El Paso's West Side between Executive Center Boulevard and North Mesa Street. GO 10 features the addition of collector-distributor lanes and a new direct connector with Border West Expressway.

Maintain a Safe System • Address Congestion • Best-in-Class State Agency • Connect Texas Communities

An Equal Opportunity Employer

[www.go10elpaso.com](http://www.go10elpaso.com) | [facebook.com/go10elpaso](https://facebook.com/go10elpaso) | [twitter.com/go10ep](https://twitter.com/go10ep)



**a TxDOT Project**  
For immediate release

# NEWS RELEASE

## EL PASO DISTRICT

Blanca Del Valle  
(915) 790-4341  
Blanca.DelValle@txdot.gov

### Sunland Park

#### Overnight

Paisano Drive (US 85) will be closed from Sunland Park Drive to Crockett Street on Tuesday, **Aug. 9** from 9 p.m. to 5 a.m. Crews will be moving traffic control barriers. [Map 2]

### Resler

#### 26 Hours

The Resler Entrance Ramp to I-10 East will be closed starting at 3 a.m. Sunday, **Aug. 7**, opening at 5 a.m. **Aug. 8**. Crews will be trenching and installing a four-foot wide reclaimed water casing. [Map 1]

#### 26 Hours

The Resler Exit Ramp from I-10 West will be closed starting at 3 a.m. Sunday, **Aug. 14**, opening at 5 a.m. **Aug. 15**. Crews will be installing a four-foot wide reclaimed water casing. [Map 1]

### ADVANCE NOTICE

#### I-10 Both Directions

#### 26 Hours

I-10 in both directions will be completely closed between the Sunland Park Overpass to the Executive Center Overpass from 3 a.m. Sunday, **Aug. 14** to 5 a.m. Monday, **Aug. 15**. This closure was initially announced July 29. Crews will be demolishing the Buena Vista Bridge (aka the Bridge to Nowhere). [Map 3]

Detour: Both eastbound and westbound traffic will be detoured to North Mesa Street (SH 20).

*Eastbound vehicles* will exit at Sunland Park (Exit 13), turn left on Sunland Park Dr, turn right on North Mesa St (SH 20), and turn right on Executive Center Blvd. Vehicles will be able to re-enter I-10 East from Executive Center Blvd.

*Westbound vehicles* will exit at Executive Center (Exit 16), turn right on Executive Center Blvd, turn left on North Mesa St (SH 20), and turn left on Sunland Park Dr. Vehicles will be able to re-enter I-10 West from Sunland Park Dr.

Page 2 of 2

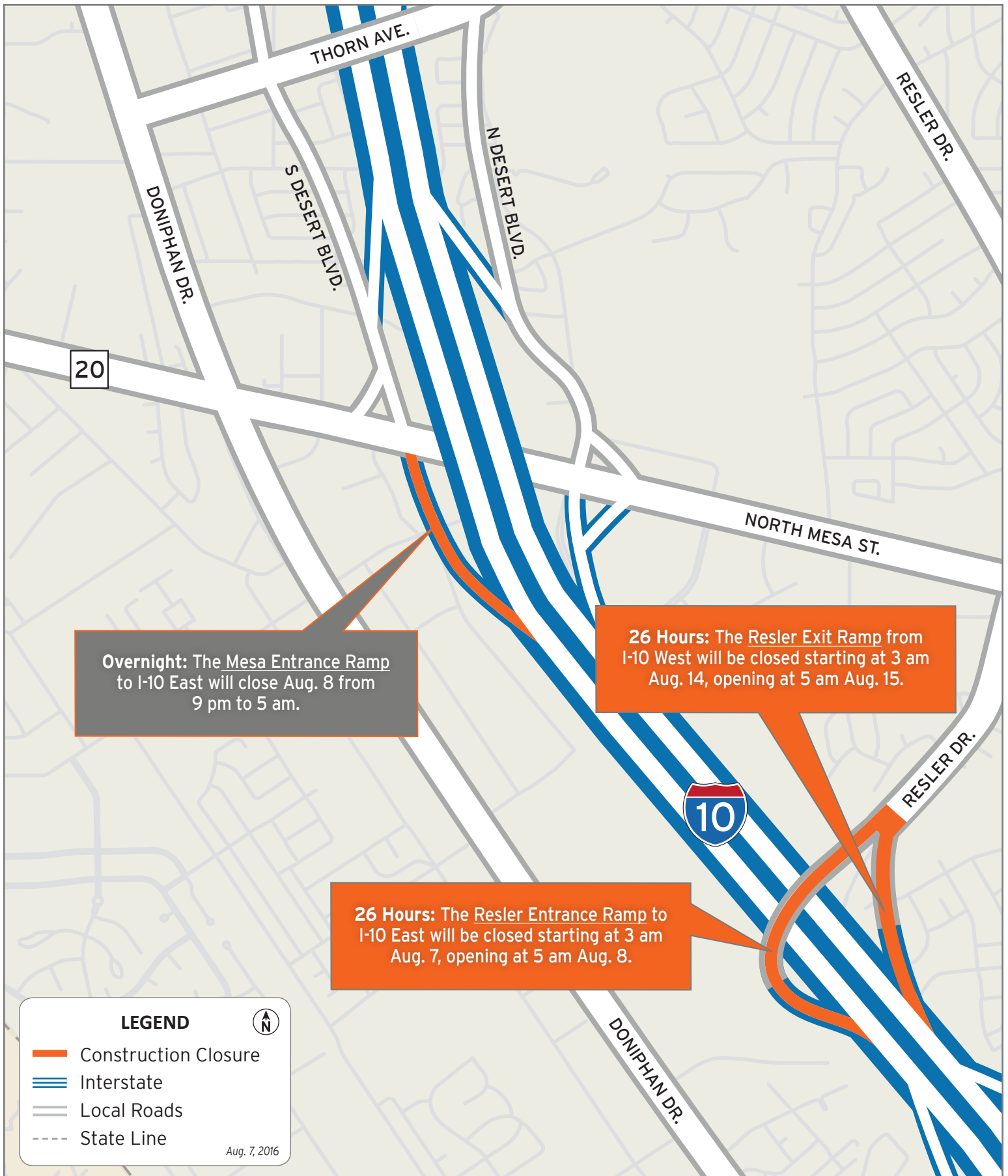


The Texas Department of Transportation is responsible for maintaining 80,000 miles of road and for supporting aviation, rail, and public transportation across the state. GO 10 is a \$158 million reconstruction of Interstate 10 that spans approximately 6 miles on El Paso's West Side between Executive Center Boulevard and North Mesa Street. GO 10 features the addition of collector-distributor lanes and a new direct connector with Border West Expressway.

Maintain a Safe System • Address Congestion • Best-in-Class State Agency • Connect Texas Communities

An Equal Opportunity Employer

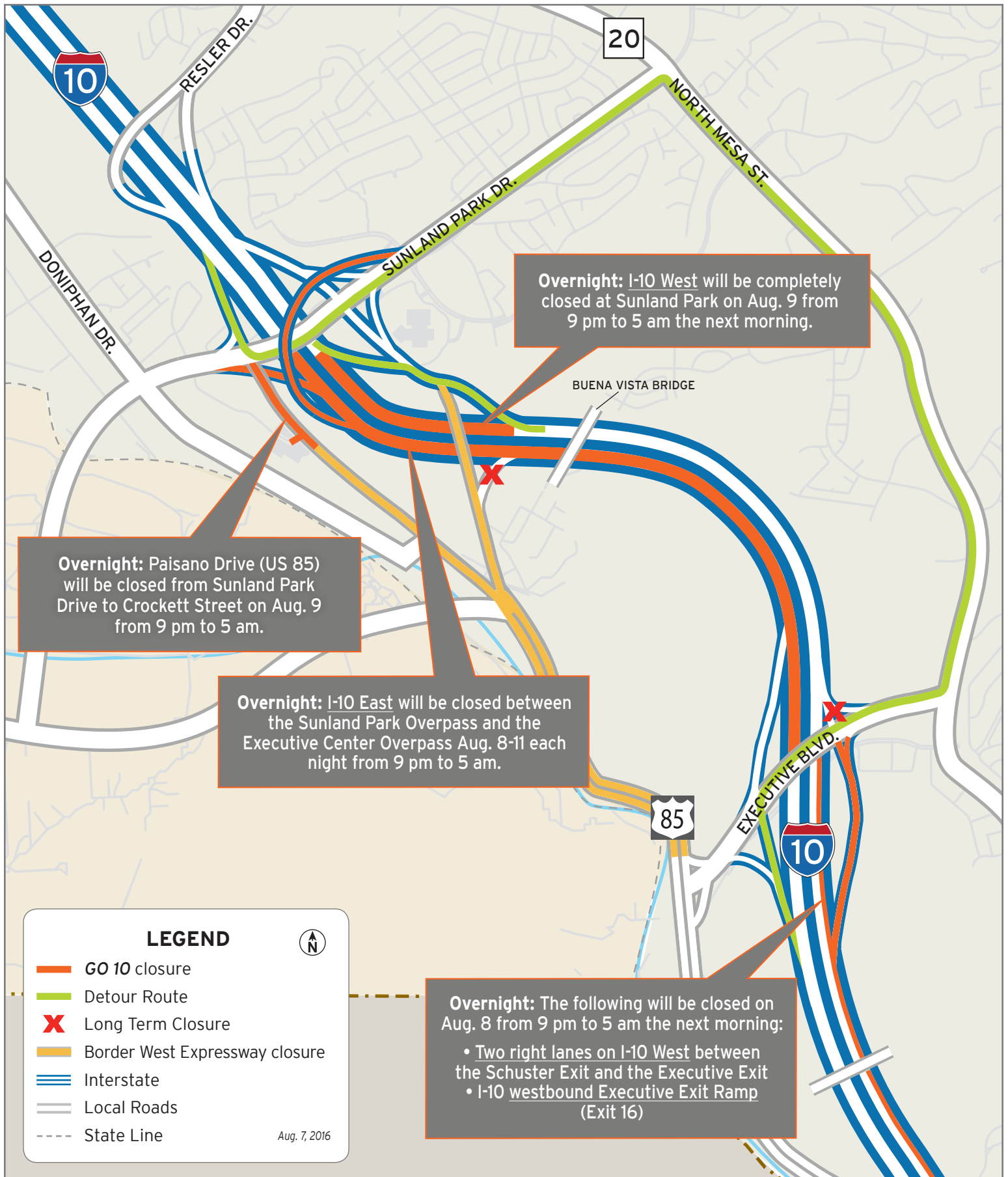
[www.go10elpaso.com](http://www.go10elpaso.com) | [facebook.com/go10elpaso](https://facebook.com/go10elpaso) | [twitter.com/go10ep](https://twitter.com/go10ep)



# Ramps at Mesa and Resler to close

Map 1 of 3





# Closures on I-10

Map 2 of 3





# Full Closure on I-10 in both directions

Map 3 of 3

