



a TxDOT Project
For immediate release

NEWS RELEASE

EL PASO DISTRICT

Jennifer Wright
(915) 790-4340
Jennifer.Wright3@txdot.gov

September 30, 2016

I-10 East

12 Hours

5 p.m. Sunday, Oct. 2 through 5 a.m. Monday, Oct. 3

- I-10 Eastbound will be completely closed between the Sunland Park Exit Ramp (Exit 13) to the Executive Center Overpass.

Crews will be repairing and grading overhang brackets on the Paisano (US 85) Overpass.

Detour route: Traffic will exit I-10 at Sunland Park (Exit 13), take North Mesa Street (SH 20) south toward Executive Center Blvd, and re-enter I-10 Eastbound from Executive Center Blvd. Follow the road signs in place. [Map 1]

I-10 West

Overnight

Monday, Oct. 3 through Thursday, Oct. 6

9 p.m. each night to 5 a.m. each morning

- I-10 Westbound will be reduced to one lane between the Executive Center Overpass and the Sunland Park Overpass.

Crews will continue concrete paving of the new westbound lanes and grading overhang brackets. [Map 1]

Mesa

Weeklong

9 a.m. Saturday, Oct. 1 to 4 p.m. Friday, Oct. 7

- A right lane on North Mesa Street (SH 20) will be closed between South Desert Boulevard and Osborne Drive (in the direction traveling toward Doniphan Drive).
- A right lane on North Mesa Street (SH 20) will be closed between Osborne Drive and Remcon Circle (in the direction traveling toward Remcon Circle).
- A right turn lane coming from the westbound Mesa Exit Ramp onto North Mesa Street (SH 20) will be closed.

This is a continuation of work that began two weeks ago. Crews are working on a nearby waterline, bridge columns and a sewer line. [Map 2]

###

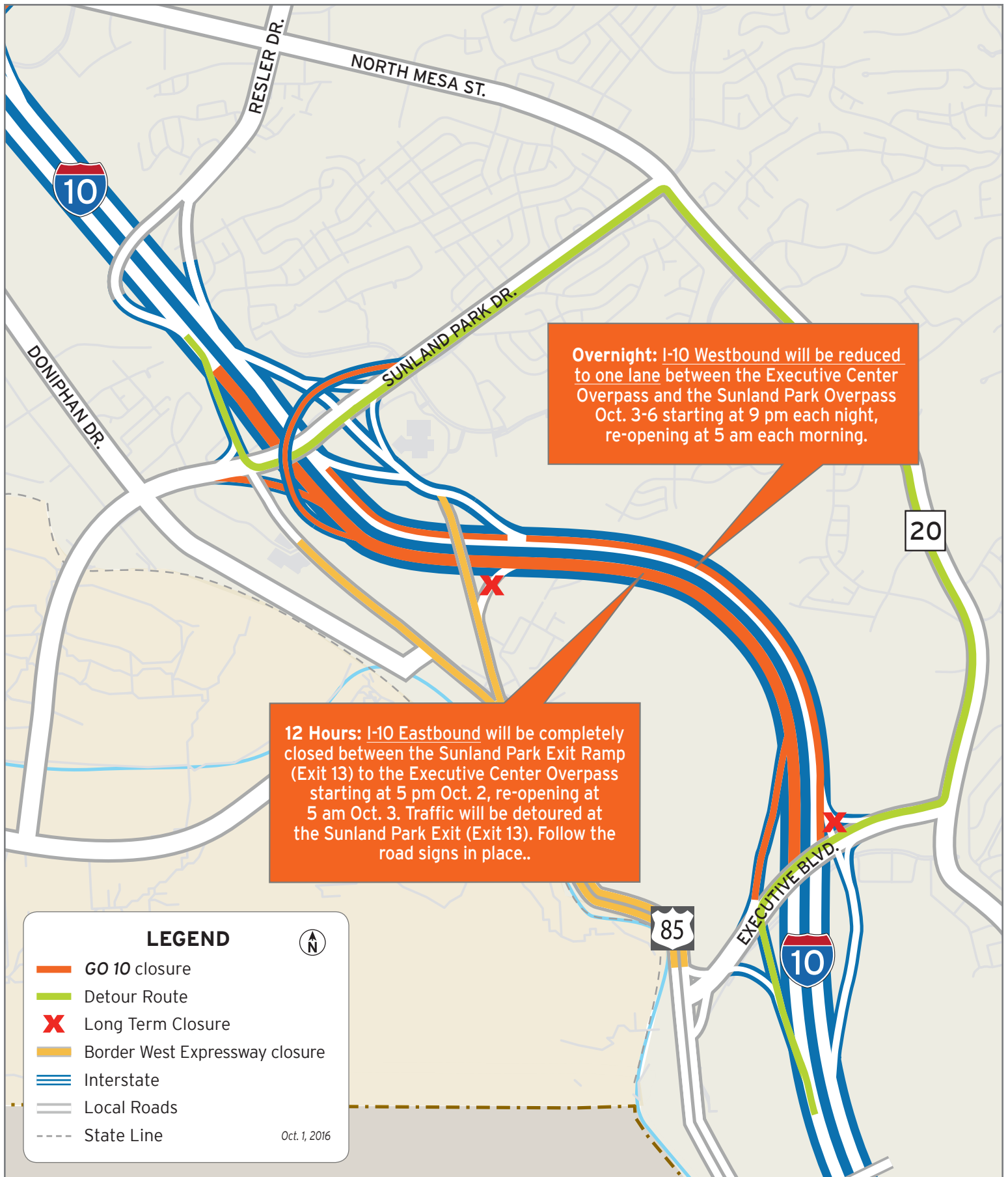


The Texas Department of Transportation is responsible for maintaining 80,000 miles of road and for supporting aviation, rail, and public transportation across the state. GO 10 is a \$158 million reconstruction of Interstate 10 that spans approximately 6 miles on El Paso's West Side between Executive Center Boulevard and North Mesa Street. GO 10 features the addition of collector-distributor lanes and a new direct connector with Border West Expressway.

Maintain a Safe System • Address Congestion • Best-in-Class State Agency • Connect Texas Communities

An Equal Opportunity Employer

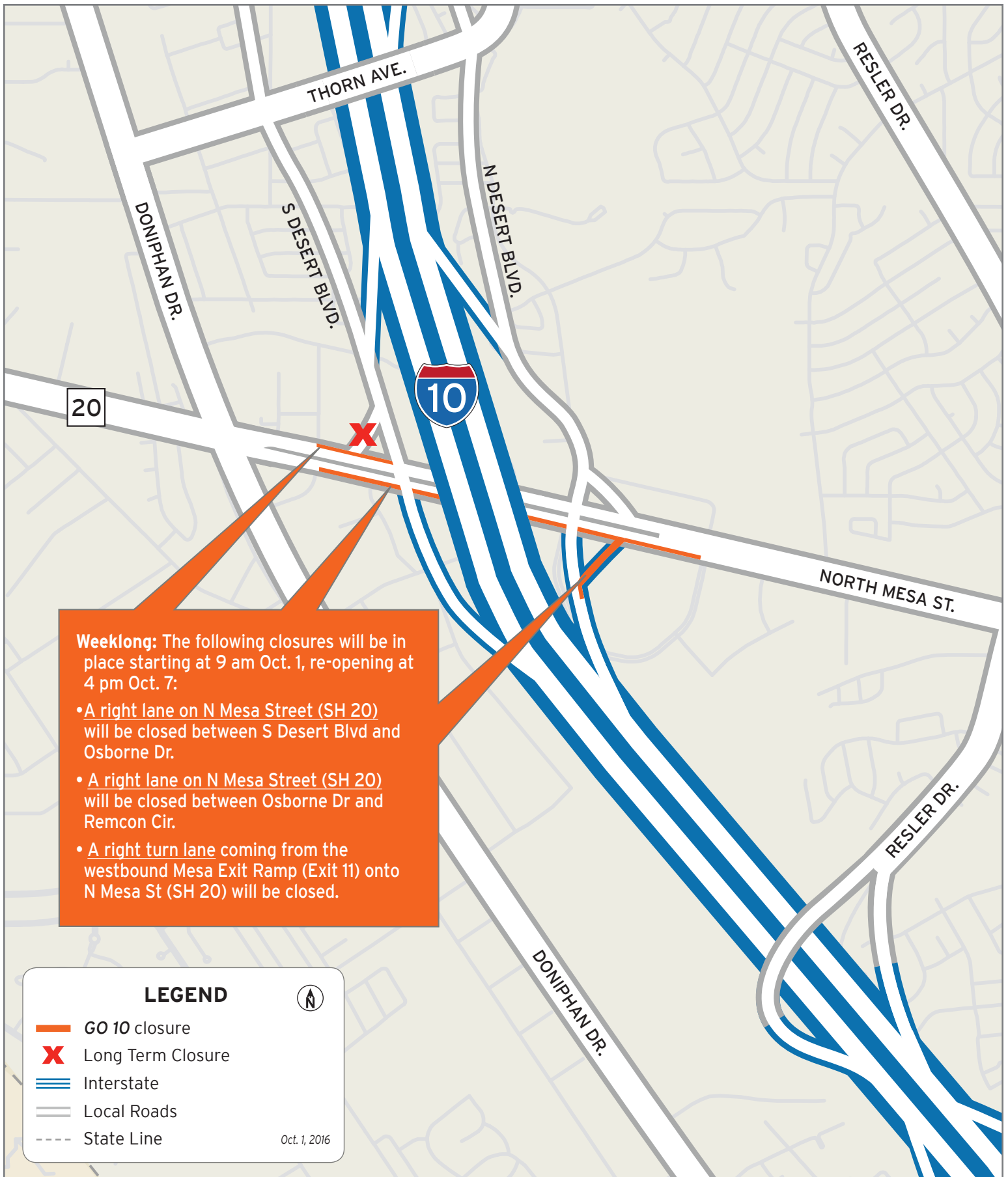
www.go10elpaso.com | facebook.com/go10elpaso | twitter.com/go10ep



Closures on I-10

Map 1 of 2





Closures on North Mesa Street

Map 2 of 2

