



a TxDOT Project
For immediate release

NEWS RELEASE

EL PASO DISTRICT

Blanca Del Valle
(915) 790-4341
Blanca.DelValle@txdot.gov

August 26, 2016

Milestone: **GO 10** begins concrete paving of new westbound lanes

I-10 EAST

Overnight

The following closures will take place **Sunday, Aug. 28 through Thursday, Sept. 1** from 9 p.m. each night to 5 a.m. each morning:

- I-10 Eastbound will be reduced to one lane between the Sunland Park Overpass and Buena Vista.
- Sunland Park Flyover Entrance Ramp to I-10 Eastbound will be closed.

Crews will continue working on the new Paisano (US 85) Bridge. [Map 1]

SUNLAND

Daytime

The Sunland Park Entrance Ramp to I-10 Eastbound (coming from Doniphan Drive) will be closed **Sunday, Aug. 28** from 5 a.m. to 5 p.m. Utility workers from Clear Channel will be dismantling and removing a billboard. [Map 1]

I-10 WEST

Overnight

I-10 Westbound will be reduced to one lane between the Executive Center Overpass and the Sunland Park Overpass **Sunday, Aug. 28 through Thursday, Sept. 1** from 9 p.m. each night to 5 a.m. each morning. Crews will continue work on the new Paisano (US 85) Bridge and start concrete paving of new westbound lanes. This marks the beginning of new lane construction on the westbound side of I-10. [Map 1]

Daytime

The following closures will take place **Tuesday, Aug. 30** from 9 a.m. to noon:

- The Executive Center Exit Ramp (Exit 16) from I-10 Westbound will be closed.
- The two right lanes on I-10 Westbound between Asarco and the Executive Center Exit Ramp (Exit 16) will be closed.

Crews will be replacing lane delineator posts at the exit ramp. [Map 1]

Daytime

A right lane on I-10 Westbound will be closed between the Resler Exit Ramp (Exit 12) and the North Mesa Exit Ramp (Exit 11) **Monday, Aug. 29 through Friday, Sept. 2** from 9 a.m. to 4 p.m. each day. The closure is necessary to protect motorists and workers as girders are delivered to the area. [Map 2]

1 of 2



The Texas Department of Transportation is responsible for maintaining 80,000 miles of road and for supporting aviation, rail, and public transportation across the state. GO 10 is a \$158 million reconstruction of Interstate 10 that spans approximately 6 miles on El Paso's West Side between Executive Center Boulevard and North Mesa Street. GO 10 features the addition of collector-distributor lanes and a new direct connector with Border West Expressway.

Maintain a Safe System • Address Congestion • Best-in-Class State Agency • Connect Texas Communities

An Equal Opportunity Employer

www.go10elpaso.com | facebook.com/go10elpaso | twitter.com/go10ep



a TxDOT Project

For immediate release

NEWS RELEASE

EL PASO DISTRICT

Blanca Del Valle

(915) 790-4341

Blanca.DelValle@txdot.gov

MESA

Daytime

A right lane on North Mesa Street (SH 20) will be closed to traffic traveling from Osborne Drive to the Mesa Exit Ramp from I-10 Westbound **Monday, Aug. 29 through Thursday, Sept. 1** from 9 a.m. to 4 p.m. each day. Crews will be constructing new columns for the improved I-10 bridge over North Mesa Street. [Map 2]

2 of 2

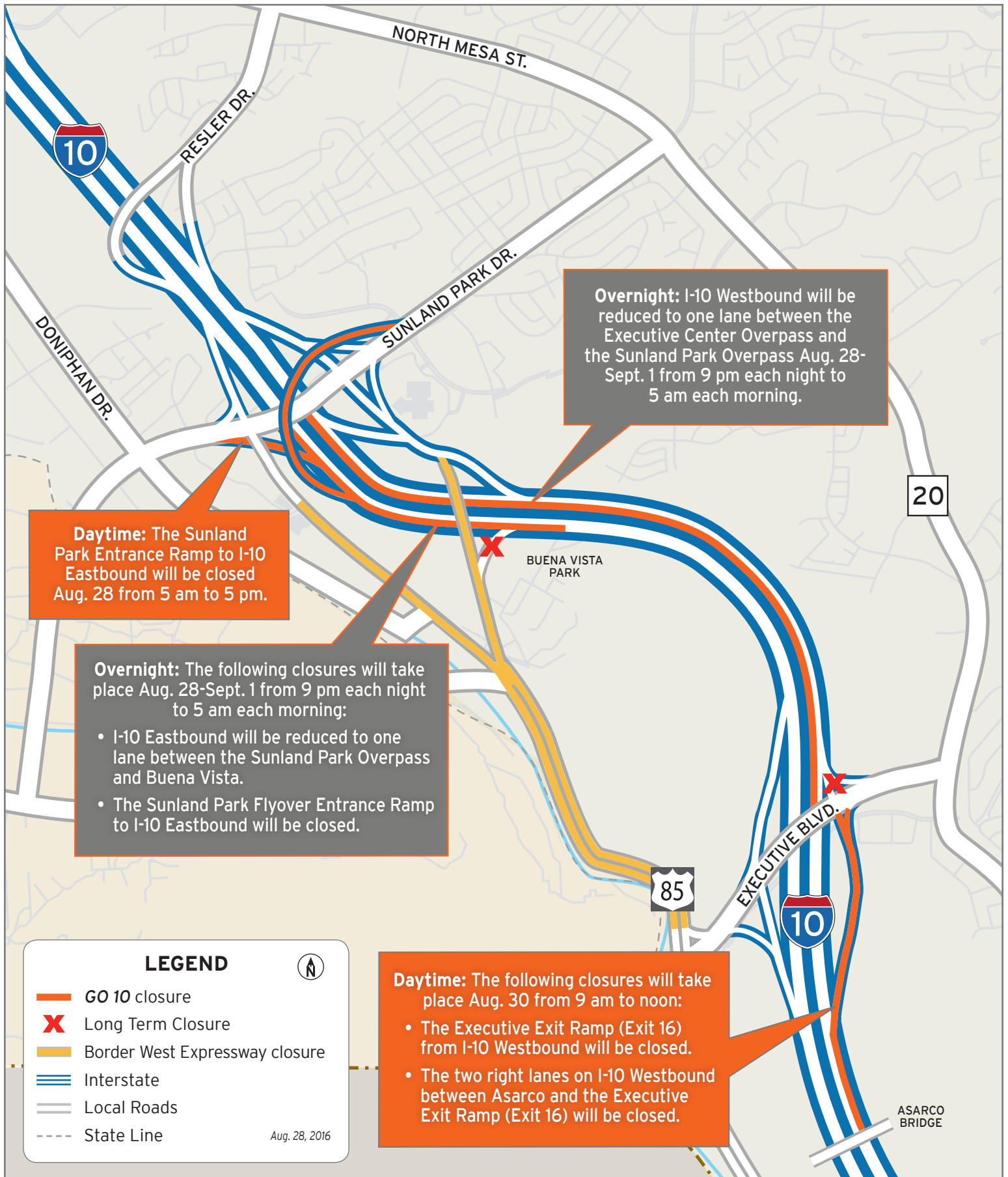


The Texas Department of Transportation is responsible for maintaining 80,000 miles of road and for supporting aviation, rail, and public transportation across the state. GO 10 is a \$158 million reconstruction of Interstate 10 that spans approximately 6 miles on El Paso's West Side between Executive Center Boulevard and North Mesa Street. GO 10 features the addition of collector-distributor lanes and a new direct connector with Border West Expressway.

Maintain a Safe System • Address Congestion • Best-in-Class State Agency • Connect Texas Communities

An Equal Opportunity Employer

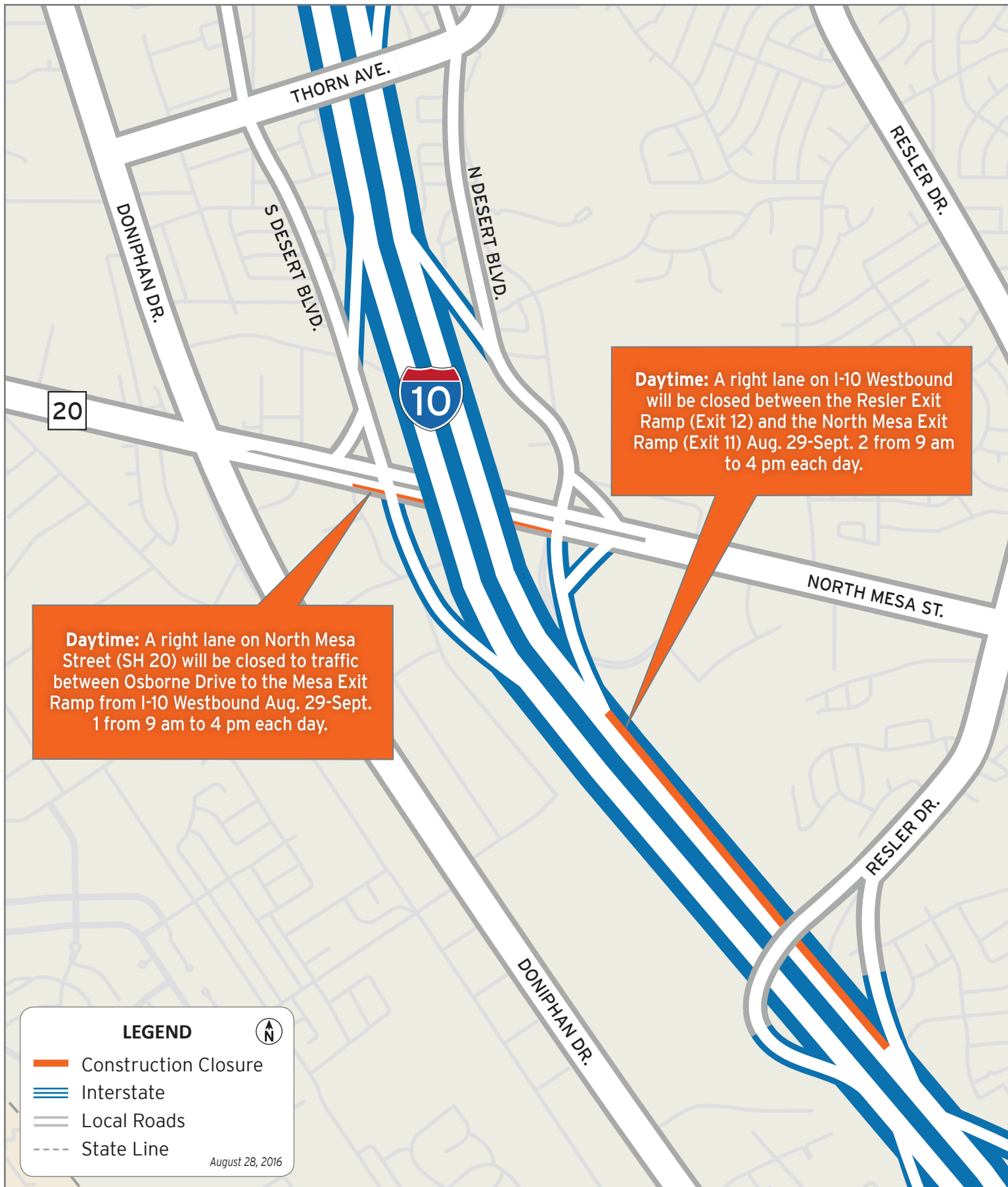
www.go10elpaso.com | facebook.com/go10elpaso | twitter.com/go10ep



Closures on I-10

Map 1 of 2





Closures on I-10 and North Mesa

Map 2 of 2

