



**a TxDOT Project**  
For immediate release

## NEWS RELEASE

### EL PASO DISTRICT

Jennifer Wright  
(915) 790-4340  
Jennifer.Wright3@txdot.gov

November 18, 2016

### I-10 East & West

#### Overnight

Sunday, Nov. 20 through Tuesday, Nov. 22  
9 p.m. each night to 5 a.m. each morning

- A left lane on I-10 in both directions will be closed for approximately a half mile starting at the North Mesa Intersection.

Crews will continue work on temporary shoring walls. This area will continue to be the focus of intense work for another eight months or more. This work is the first of three phases at the I-10/Mesa interchange. [Map 1]

#### Overnight

Tuesday, Nov. 22  
9 p.m. to 5 a.m. the following morning

- I-10 Westbound will be **completely closed** at the Sunland Exit Ramp (Exit 13). Detour: Traffic on I-10 West will exit at Sunland Park Drive (Exit 13) and re-enter I-10 West prior to the Sunland Park Overpass.
- I-10 Eastbound will be **completely closed** at the Sunland Exit Ramp (Exit 13). Detour: Traffic will be detoured onto North Mesa Street (SH 20).

Crews will be placing concrete deck onto the new Paisano Drive (US 85) Bridge over I-10. [Map 3]

### I-10 East

#### Daytime

Monday, Nov. 21 and Tuesday, Nov 22  
9 a.m. to 4 p.m. each day

- A left lane on I-10 Eastbound will be closed from approximately half a mile east of the North Mesa Overpass to the Resler Overpass.

Crews will be working on an arroyo bridge structure. [Map 2]

- page 1 of 3 -



The Texas Department of Transportation is responsible for maintaining 80,000 miles of road and for supporting aviation, rail, and public transportation across the state. GO 10 is a \$158 million reconstruction of Interstate 10 that spans approximately 6 miles on El Paso's West Side between Executive Center Boulevard and North Mesa Street. GO 10 features the addition of collector-distributor lanes and a new direct connector with Border West Expressway.

Maintain a Safe System • Address Congestion • Best-in-Class State Agency • Connect Texas Communities

An Equal Opportunity Employer

[www.go10elpaso.com](http://www.go10elpaso.com) | [facebook.com/go10elpaso](https://facebook.com/go10elpaso) | [twitter.com/go10ep](https://twitter.com/go10ep)



**a TxDOT Project**  
For immediate release

## NEWS RELEASE

### EL PASO DISTRICT

Jennifer Wright  
(915) 790-4340  
Jennifer.Wright3@txdot.gov

#### Mesa

##### Daytime

Monday, Nov. 21 and Tuesday, Nov. 22

9 a.m. to 4 p.m. each day

- A right lane on North Mesa Street (SH 20) will be closed between Remcon Circle and Osborne Drive (in the direction traveling toward Doniphan Drive).

Crews will be boring and potholing for utilities. This area will continue to be the focus of intense work for another eight months or more. This work is the first of three phases at the I-10/Mesa interchange. [Map 1]

#### I-10 West

##### Daytime

Monday, Nov. 21 and Tuesday, Nov. 22

9 a.m. to 4 p.m. each day

- A right lane on I-10 Westbound will be closed between the Sunland Park Exit Ramp (Exit 13) and the Sunland Park Overpass.

Crews will be drilling shafts near the Sunland Park Overpass and erecting a high mast illumination pole behind the barrier. [Map 2]

**NOTE:** Details about a major road closure at the I-10/North Mesa interchange is on the next page.

- page 2 of 3 -



The Texas Department of Transportation is responsible for maintaining 80,000 miles of road and for supporting aviation, rail, and public transportation across the state. GO 10 is a \$158 million reconstruction of Interstate 10 that spans approximately 6 miles on El Paso's West Side between Executive Center Boulevard and North Mesa Street. GO 10 features the addition of collector-distributor lanes and a new direct connector with Border West Expressway.

Maintain a Safe System • Address Congestion • Best-in-Class State Agency • Connect Texas Communities

An Equal Opportunity Employer

[www.go10elpaso.com](http://www.go10elpaso.com) | [facebook.com/go10elpaso](https://facebook.com/go10elpaso) | [twitter.com/go10ep](https://twitter.com/go10ep)



**a TxDOT Project**  
For immediate release

## NEWS RELEASE

**EL PASO DISTRICT**

Jennifer Wright  
(915) 790-4340  
Jennifer.Wright3@txdot.gov

### **ADVANCE NOTICE: Traffic Alert for I-10 and North Mesa Street**

Details for the following closure are subject to change due to weather and other variables; however, because of the closure's significance, we are providing as much information as we can at this time. Please note, all lanes will be open during the daytime.

#### **I-10 and Mesa**

##### **Eleven nights**

Sunday, Dec. 4 through Thursday, Dec. 8

Sunday, Dec. 11 through Thursday, Dec. 15

Sunday, Dec. 18

9 p.m. each night to 5 a.m. each morning

- I-10 Westbound will be **completely closed** between the North Mesa Exit Ramp (Exit 11) and the Thorn Avenue Overpass.
- A left lane on I-10 Eastbound will be closed between the North Mesa Exit Ramp (Exit 11) and North Mesa Entrance Ramp.
- North Mesa Street (SH 20) will be **completely closed** in both directions between North and South Desert Boulevard frontage roads.

This is a new and high impact closure. **GO 10** recommends people avoid the intersection altogether during these 11 nights or follow the detour signs in the area. [Map 4]

Crews will be moving 30 bridge beams into the area and using two cranes to set those beams into place. The longest beam is 164-feet long, more than six-feet tall, weighs 57 tons, and will completely span North Mesa Street (SH 20) once in place.

**DETOUR:** The detour route for this nightly closure will be considerable. An illustration of the closure and detour is located on Map 4 enclosed with this news release. (maps are not to scale.)

- page 3 of 3 -



The Texas Department of Transportation is responsible for maintaining 80,000 miles of road and for supporting aviation, rail, and public transportation across the state. GO 10 is a \$158 million reconstruction of Interstate 10 that spans approximately 6 miles on El Paso's West Side between Executive Center Boulevard and North Mesa Street. GO 10 features the addition of collector-distributor lanes and a new direct connector with Border West Expressway.

Maintain a Safe System • Address Congestion • Best-in-Class State Agency • Connect Texas Communities

An Equal Opportunity Employer

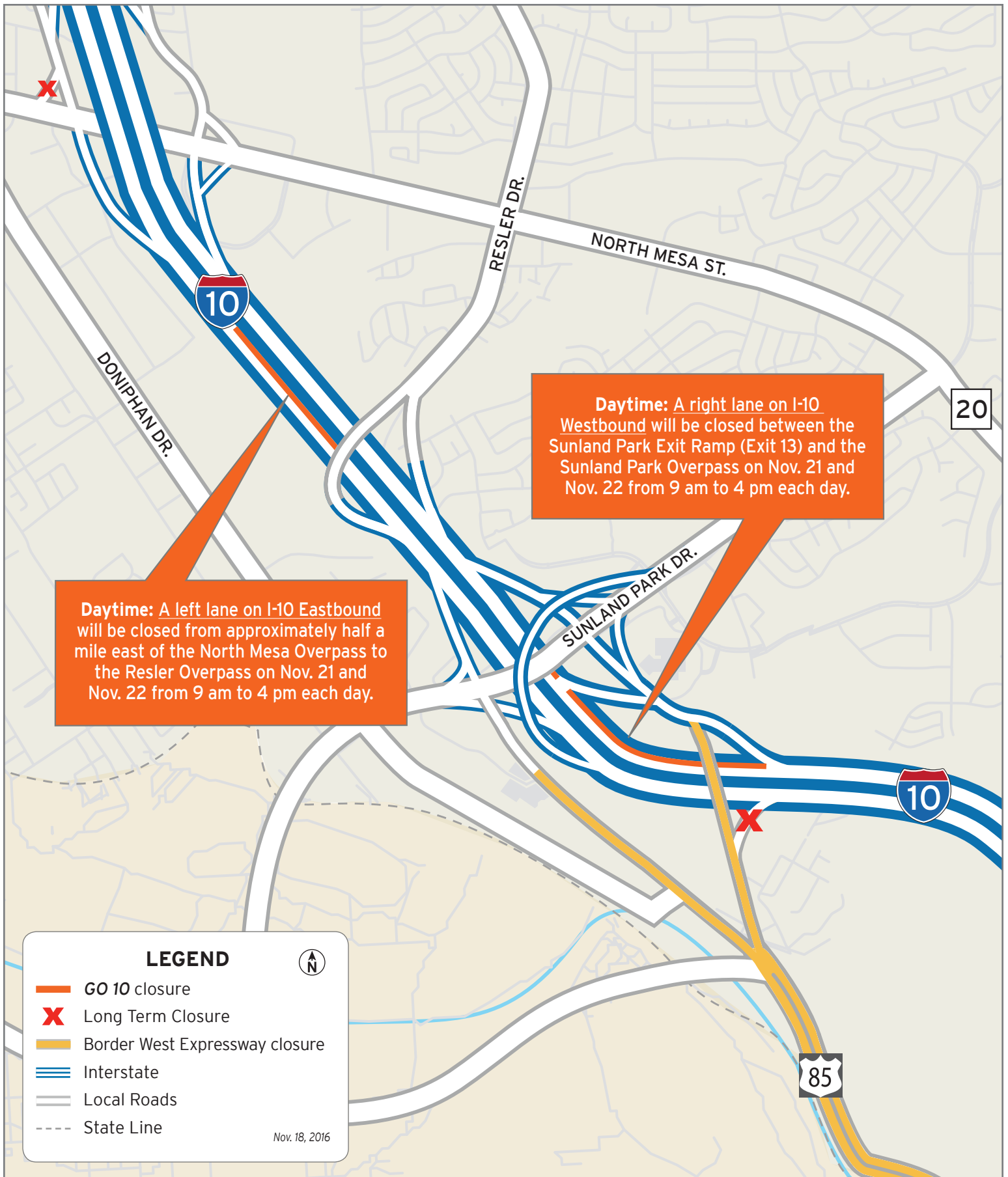
[www.go10elpaso.com](http://www.go10elpaso.com) | [facebook.com/go10elpaso](https://facebook.com/go10elpaso) | [twitter.com/go10ep](https://twitter.com/go10ep)



# Work continues at I-10 and Mesa

Map 1 of 4

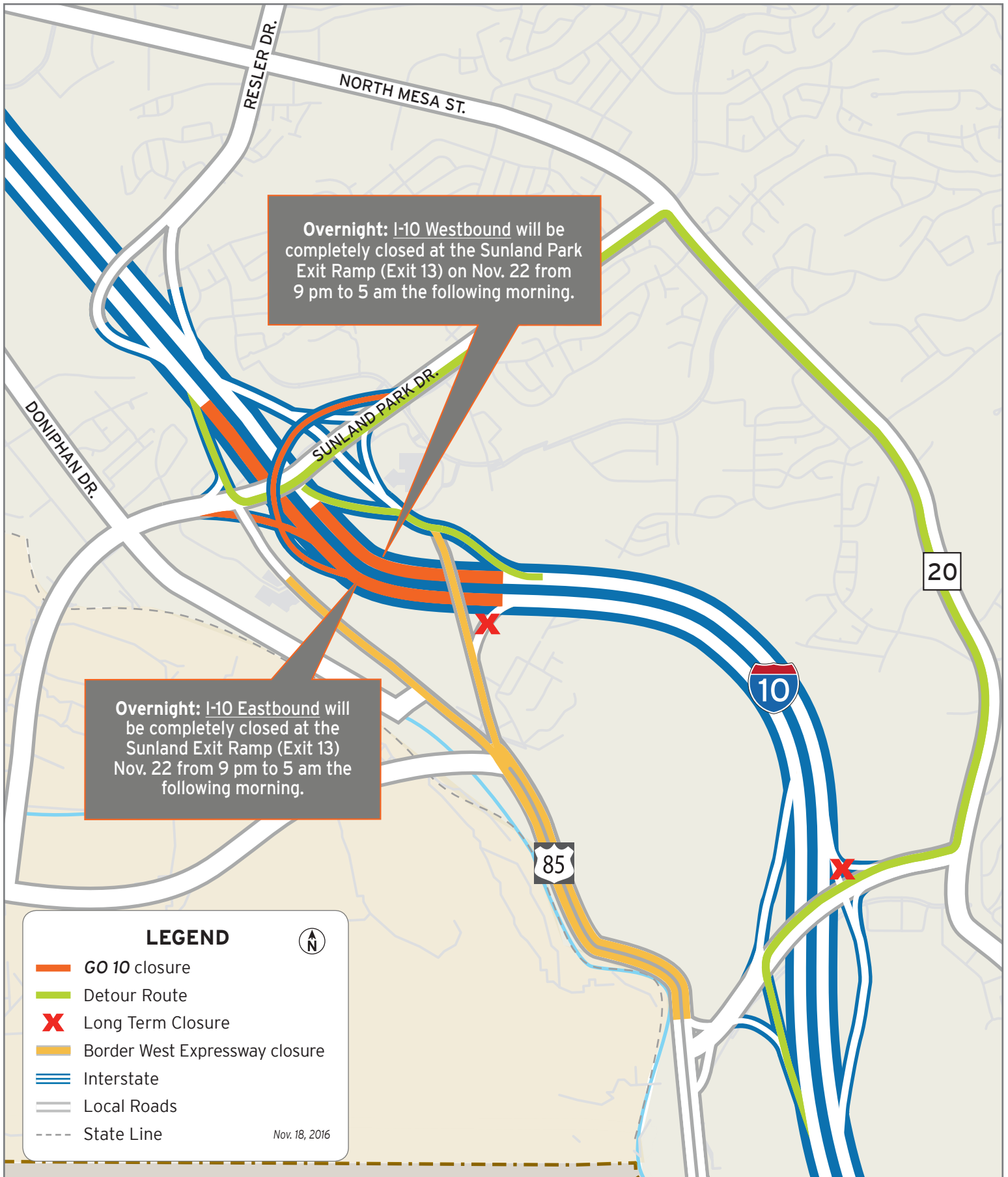




# Daytime Closures on I-10

Map 2 of 4

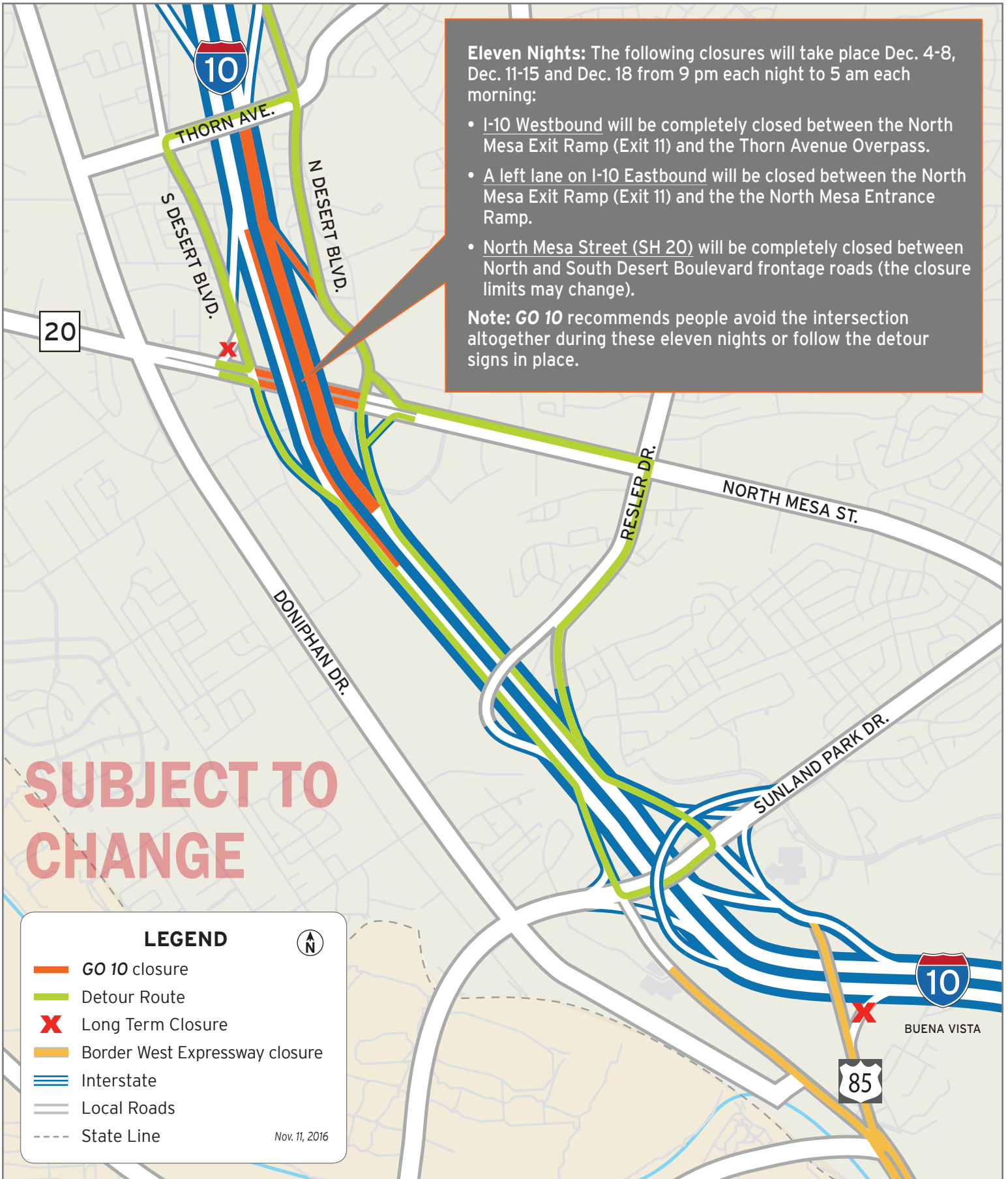




# Overnight Closures on I-10

Map 3 of 4





**Eleven Nights:** The following closures will take place Dec. 4-8, Dec. 11-15 and Dec. 18 from 9 pm each night to 5 am each morning:

- I-10 Westbound will be completely closed between the North Mesa Exit Ramp (Exit 11) and the Thorn Avenue Overpass.
- A left lane on I-10 Eastbound will be closed between the North Mesa Exit Ramp (Exit 11) and the the North Mesa Entrance Ramp.
- North Mesa Street (SH 20) will be completely closed between North and South Desert Boulevard frontage roads (the closure limits may change).

**Note:** GO 10 recommends people avoid the intersection altogether during these eleven nights or follow the detour signs in place.

**SUBJECT TO CHANGE**

**LEGEND**

- GO 10 closure
- Detour Route
- Long Term Closure
- Border West Expressway closure
- Interstate
- Local Roads
- State Line

Nov. 11, 2016



**Closures coming to I-10 & N Mesa**  
Map 4 of 4

**DRAFT**

