



a TxDOT Project
For immediate release

NEWS RELEASE

EL PASO DISTRICT

Jennifer Wright
(915) 790-4340
Jennifer.Wright3@txdot.gov

November 11, 2016

I-10 West

Daytime

Monday, Nov. 14 through Friday, Nov. 18
9 a.m. to 4 p.m. each day

- A right lane on I-10 Westbound will be closed between the Sunland Park Exit Ramp (Exit 13) and the Resler Exit Ramp (Exit 12).

Crews will be drilling shafts into the ground for new bridge columns. This is preparation work widening the Sunland Park Drive Overpass. [Map 2]

I-10 East & West

Overnight

Sunday, Nov. 13 through Thursday, Nov. 17
9 p.m. each night to 5 a.m. each morning

- A left lane on I-10 in both directions will be closed for approximately a half mile at the North Mesa Intersection.

Crews will continue work on temporary shoring walls. This area will continue to be the focus of intense work for another eight months or more. This work is the first of three phases at the I-10/Mesa interchange. [Map 1]

Overnight

Monday, Nov. 21 or Tuesday, Nov. 22 (*exact date is to be determined*)
9 p.m. to 5 a.m. the following morning

- I-10 Westbound will be **completely closed** at the Sunland Exit Ramp (Exit 13). Detour: Traffic will exit I-10 West at Sunland Park (Exit 13) and re-enter I-10 West prior to the Sunland Park Overpass.
- I-10 Eastbound will be **completely closed** at the Sunland Exit Ramp (Exit 13). Detour: Traffic will be detoured onto North Mesa Street (SH 20).

Crews will be pouring concrete deck onto the new Paisano Drive (US 85) Bridge over I-10. [Map 3]

- more -



The Texas Department of Transportation is responsible for maintaining 80,000 miles of road and for supporting aviation, rail, and public transportation across the state. GO 10 is a \$158 million reconstruction of Interstate 10 that spans approximately 6 miles on El Paso's West Side between Executive Center Boulevard and North Mesa Street. GO 10 features the addition of collector-distributor lanes and a new direct connector with Border West Expressway.

Maintain a Safe System • Address Congestion • Best-in-Class State Agency • Connect Texas Communities

An Equal Opportunity Employer

www.go10elpaso.com | facebook.com/go10elpaso | twitter.com/go10ep



a TxDOT Project
For immediate release

NEWS RELEASE

EL PASO DISTRICT

Jennifer Wright
(915) 790-4340
Jennifer.Wright3@txdot.gov

Resler

Daytime

Monday, Nov. 14

10 a.m. to 3 p.m.

- The Resler Entrance Ramp to I-10 Eastbound will be closed.

Motorists should use an alternate entrance ramp to I-10 Eastbound, such as the Sunland Entrance Ramp or the North Mesa Entrance Ramp. Crews will be removing an illumination pole. [Map 2]

Mesa

Daytime

Monday, Nov. 14 through Friday, Nov. 18

9 a.m. to 4 p.m. each day

- A right lane on North Mesa Street (SH 20) will be closed between Remcon Circle and Osborne Drive (in the direction traveling toward Doniphan Drive).

Crews will be boring and potholing for utilities. This area will continue to be the focus of intense work for another eight months or more. This work is the first of three phases at the I-10/Mesa interchange. [Map 1]

###

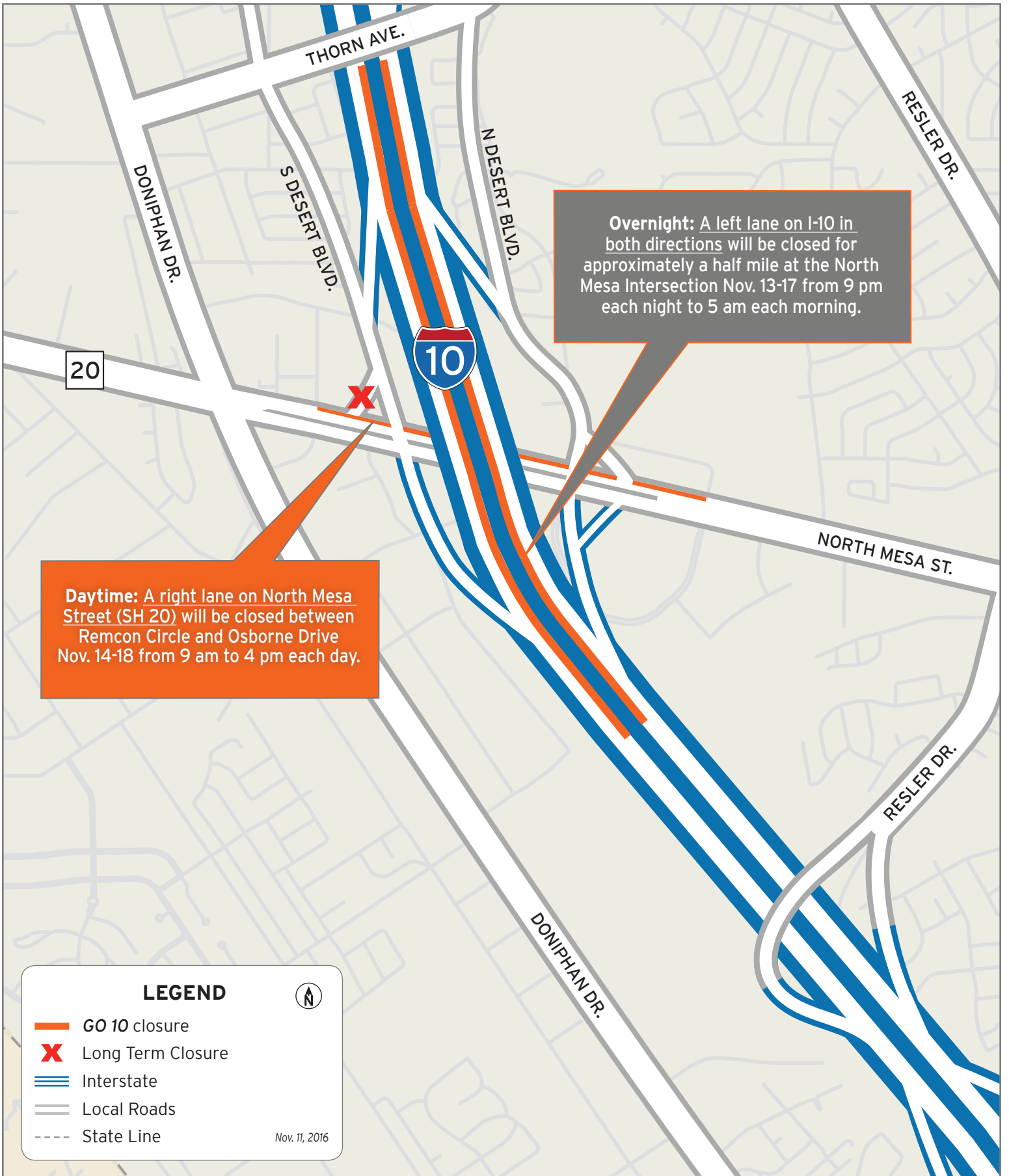


The Texas Department of Transportation is responsible for maintaining 80,000 miles of road and for supporting aviation, rail, and public transportation across the state. GO 10 is a \$158 million reconstruction of Interstate 10 that spans approximately 6 miles on El Paso's West Side between Executive Center Boulevard and North Mesa Street. GO 10 features the addition of collector-distributor lanes and a new direct connector with Border West Expressway.

Maintain a Safe System • Address Congestion • Best-in-Class State Agency • Connect Texas Communities

An Equal Opportunity Employer

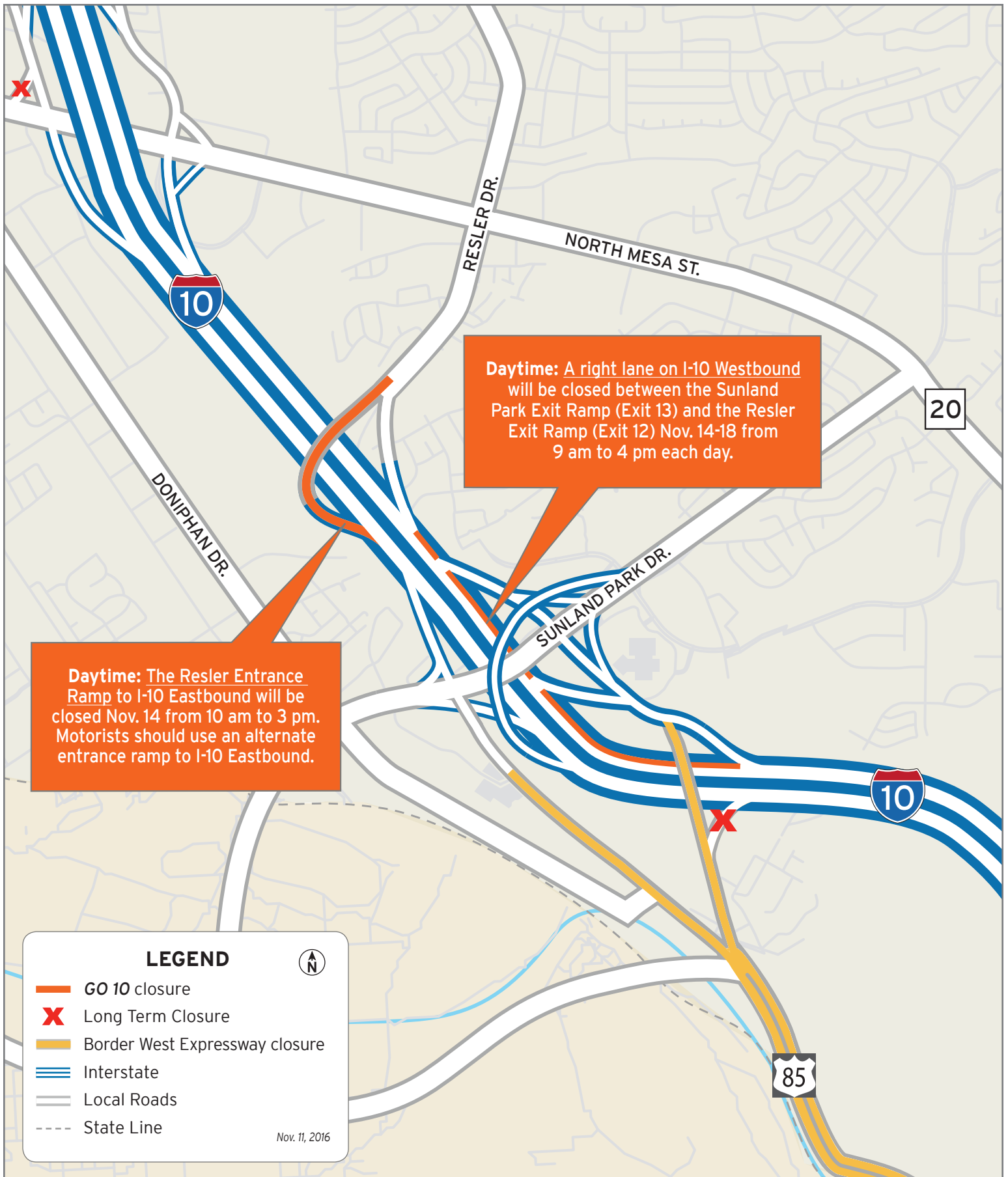
www.go10elpaso.com | facebook.com/go10elpaso | twitter.com/go10ep



Work continues at I-10 and Mesa

Map 1 of 3

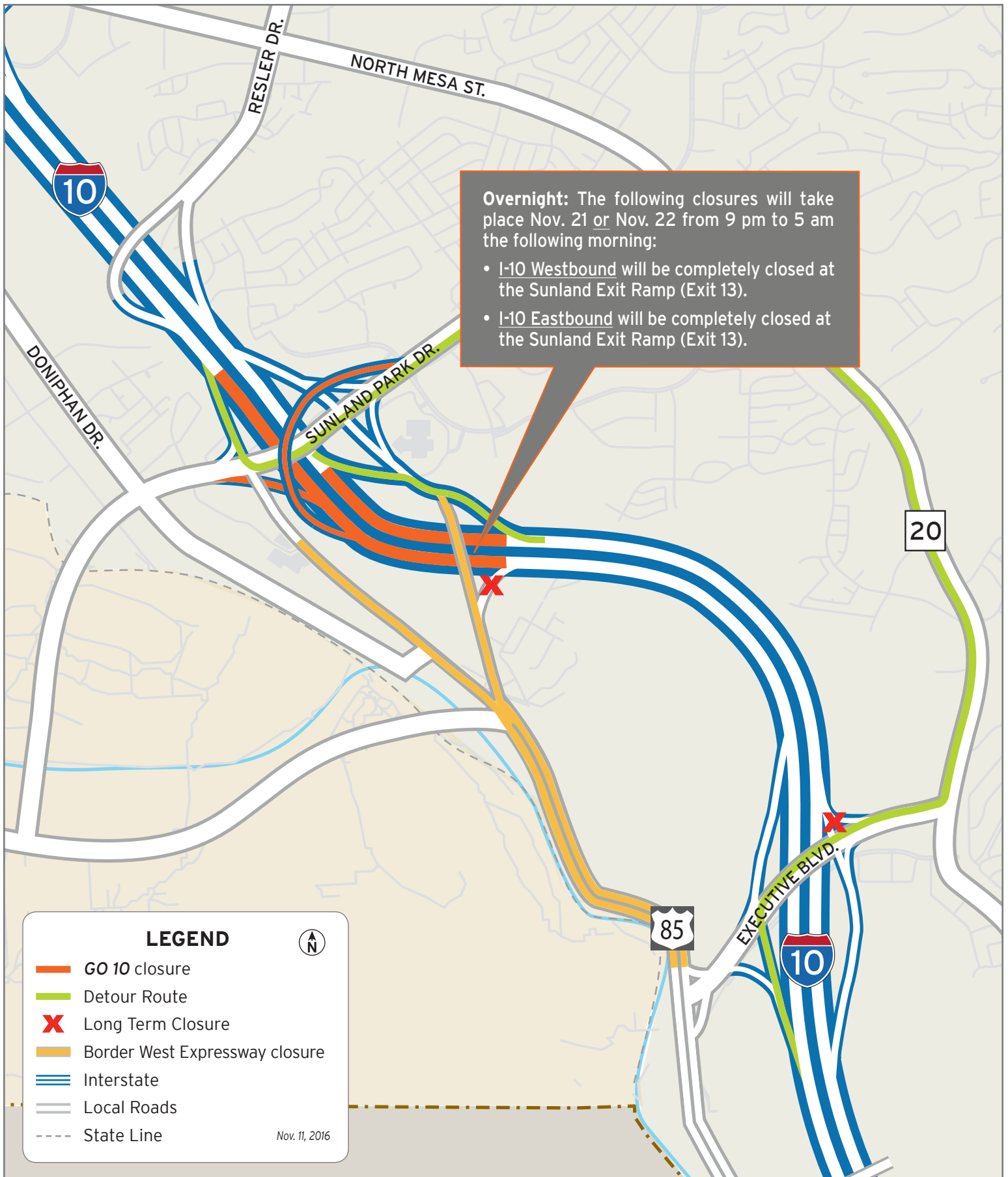




Closures on I-10 and Resler Entrance Ramp

Map 2 of 3





I-10 full closure for 1 night

Map 3 of 3

