



a TxDOT Project
For immediate release

NEWS RELEASE

EL PASO DISTRICT

Jennifer Wright
(915) 790-4340
Jennifer.Wright3@txdot.gov

December 30, 2016

CLOSURES DUE TO BRIDGE WORK CONTINUE IN EARLY 2017

I-10 East

Daytime

Tuesday, Jan. 3 through Friday, Jan. 6

9 a.m. to 4 p.m. each day

- I-10 Eastbound will be reduced to one lane for approximately a half mile between the North Mesa Overpass and the Resler Overpass.

Crews will be conducting structural bridge work. [Map 1]

Overnight

Tuesday, Jan. 3 through Thursday, Jan. 5 and Sunday, Jan. 8

9 p.m. each night to 5 a.m. each morning

- I-10 Eastbound will be reduced to one lane between the Mesa Exit Ramp (Exit 11) and the Sunland Park Exit Ramp (Exit 13).
- The Resler Entrance Ramp and both Sunland Park Entrance Ramps to I-10 Eastbound will be closed.
- I-10 Eastbound will be completely closed at the Sunland Park Exit Ramp (Exit 13).

Detour: Motorists will exit at Sunland Park (Exit 13) and be detoured onto North Mesa Street (SH 20), and will be able to re-enter I-10 from Executive Center Boulevard. [Map 3]

Crews will be conducting structural work on the westbound Paisano Drive (US 85) Bridge over I-10.

I-10 at Mesa

Overnight

Tuesday, Jan. 3

9 p.m. to 5 a.m.

- North Mesa Street (SH 20) will be completely closed in both directions between North and South Desert Boulevard frontage roads.

Detour: See the detour illustration on Map 4.

Crews will be installing bridge deck panels on the I-10 Overpass at North Mesa Street (SH 20). This marks the first of three phases that will transform the I-10 Overpass at North Mesa Street (SH 20).

1 of 2



The Texas Department of Transportation is responsible for maintaining 80,000 miles of road and for supporting aviation, rail, and public transportation across the state. GO 10 is a \$158 million reconstruction of Interstate 10 that spans approximately 6 miles on El Paso's West Side between Executive Center Boulevard and North Mesa Street. GO 10 features the addition of collector-distributor lanes and a new direct connector with Border West Expressway.

Maintain a Safe System • Address Congestion • Best-in-Class State Agency • Connect Texas Communities

An Equal Opportunity Employer

www.go10elpaso.com | facebook.com/go10elpaso | twitter.com/go10ep



a TxDOT Project
For immediate release

NEWS RELEASE

EL PASO DISTRICT

Jennifer Wright
(915) 790-4340
Jennifer.Wright3@txdot.gov

Overnight

Tuesday, Jan. 3 through Thursday, Jan. 5 and Sunday, Jan. 8 through Thursday, Jan. 12
9 p.m. each night to 5 a.m. each morning

- I-10 Westbound will be completely closed between the North Mesa Exit Ramp (Exit 11) and the North Mesa Entrance Ramp. [Map 4]
- I-10 Eastbound will be reduced to one lane between the North Mesa Exit Ramp (Exit 11) and the North Mesa Entrance Ramp. [Map 4]

Crews will be continuing structural work on the I-10 Overpass at North Mesa Street (SH 20).

FUTURE CLOSURES

I-10 Both Directions

Overnight

Monday, Jan. 16 through Thursday, Jan. 19
9 p.m. each night to 5 a.m.

- I-10 Westbound will be reduced to one lane between the Sunland Park Overpass and the North Mesa Underpass. [Map 2]
- I-10 Eastbound will be completely closed at the North Mesa Exit Ramp (Exit 11).

Detour: Motorists on I-10 East will be detoured onto Doniphan Drive (SH 20) and will be able to re-enter I-10 at Sunland Park Drive. [Map 2]

Crews will be setting steel beams into place at the Resler Flyover Ramp.

Overnight

Sunday, Jan. 15 through Tuesday, Jan. 17
9 p.m. each night to 5 a.m. each morning

- I-10 Westbound will be completely closed at the Sunland Park Exit Ramp (Exit 13)

Detour: Motorists on I-10 West will exit at Sunland Park Drive (Exit 13) and re-enter I-10 just prior to Sunland Park Drive. [Map 1]

Crews will be conducting structural work on the westbound Paisano Drive (US 85) Bridge.

All closures are subject to change.

The latest information is posted on the traffic alerts page at www.go10elpaso.com and on Twitter at twitter.com/GO10EP.

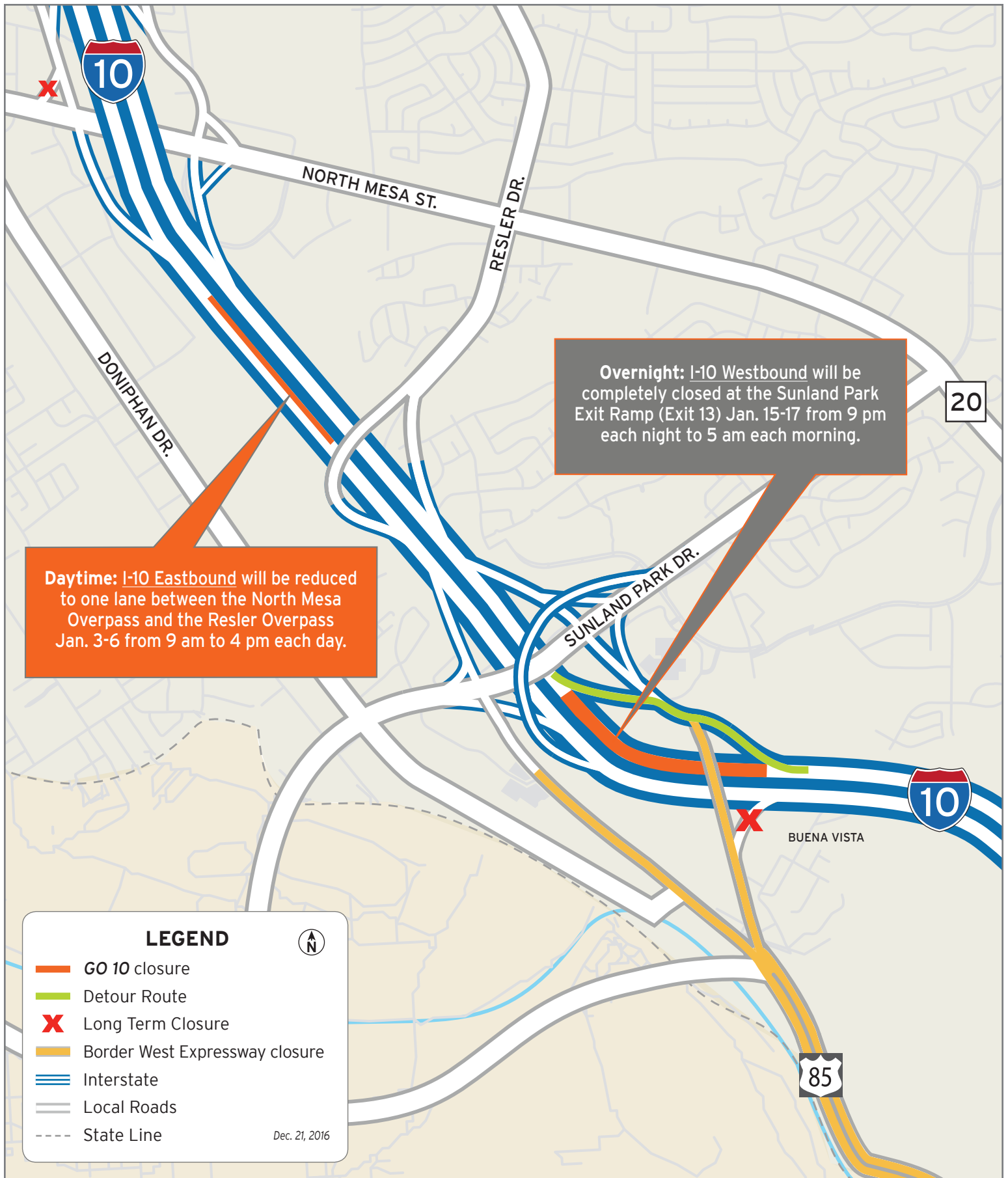
2 of 2



The Texas Department of Transportation is responsible for maintaining 80,000 miles of road and for supporting aviation, rail, and public transportation across the state. GO 10 is a \$158 million reconstruction of Interstate 10 that spans approximately 6 miles on El Paso's West Side between Executive Center Boulevard and North Mesa Street. GO 10 features the addition of collector-distributor lanes and a new direct connector with Border West Expressway.

Maintain a Safe System • Address Congestion • Best-in-Class State Agency • Connect Texas Communities
An Equal Opportunity Employer

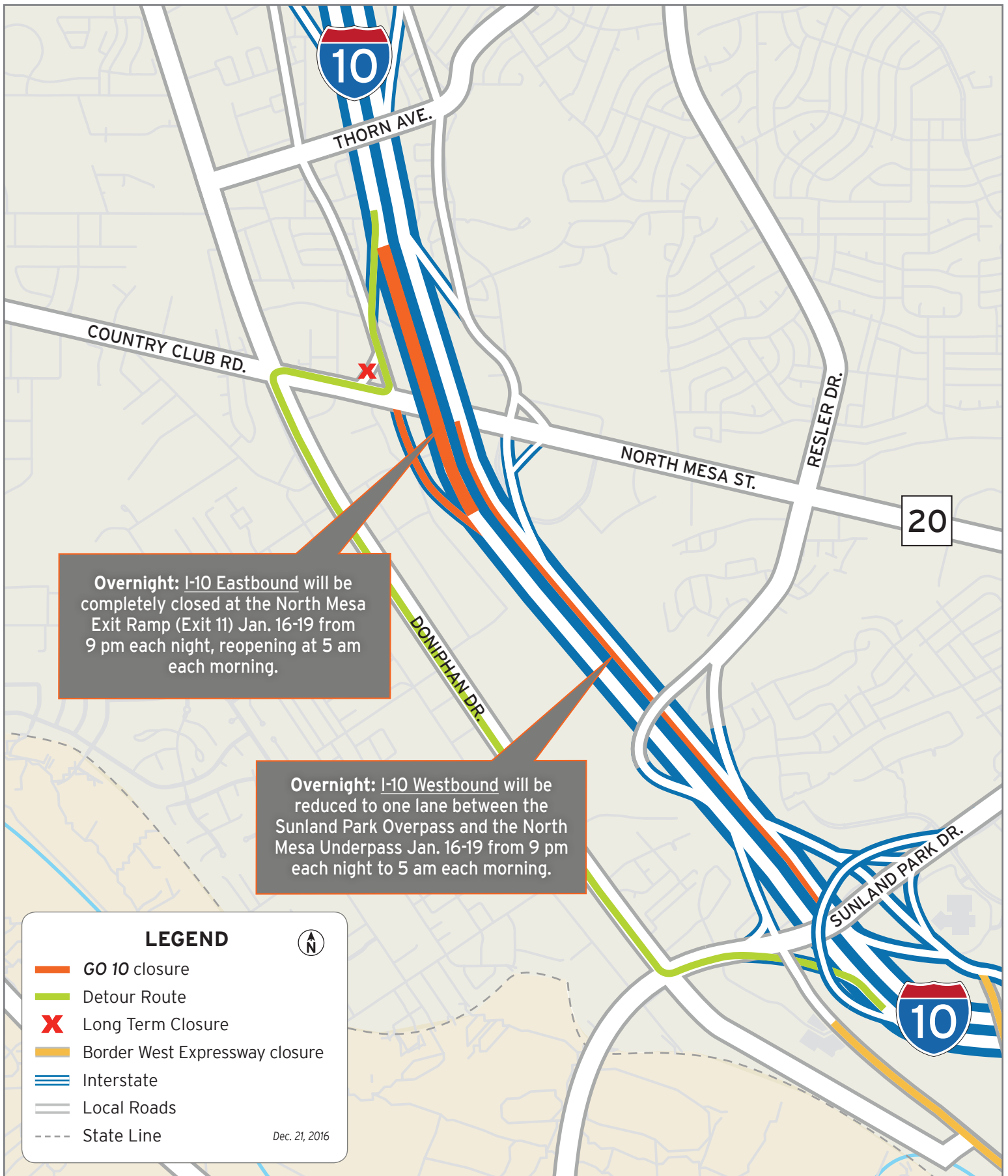
www.go10elpaso.com | facebook.com/go10elpaso | twitter.com/go10ep



Closures on I-10

Map 1 of 4

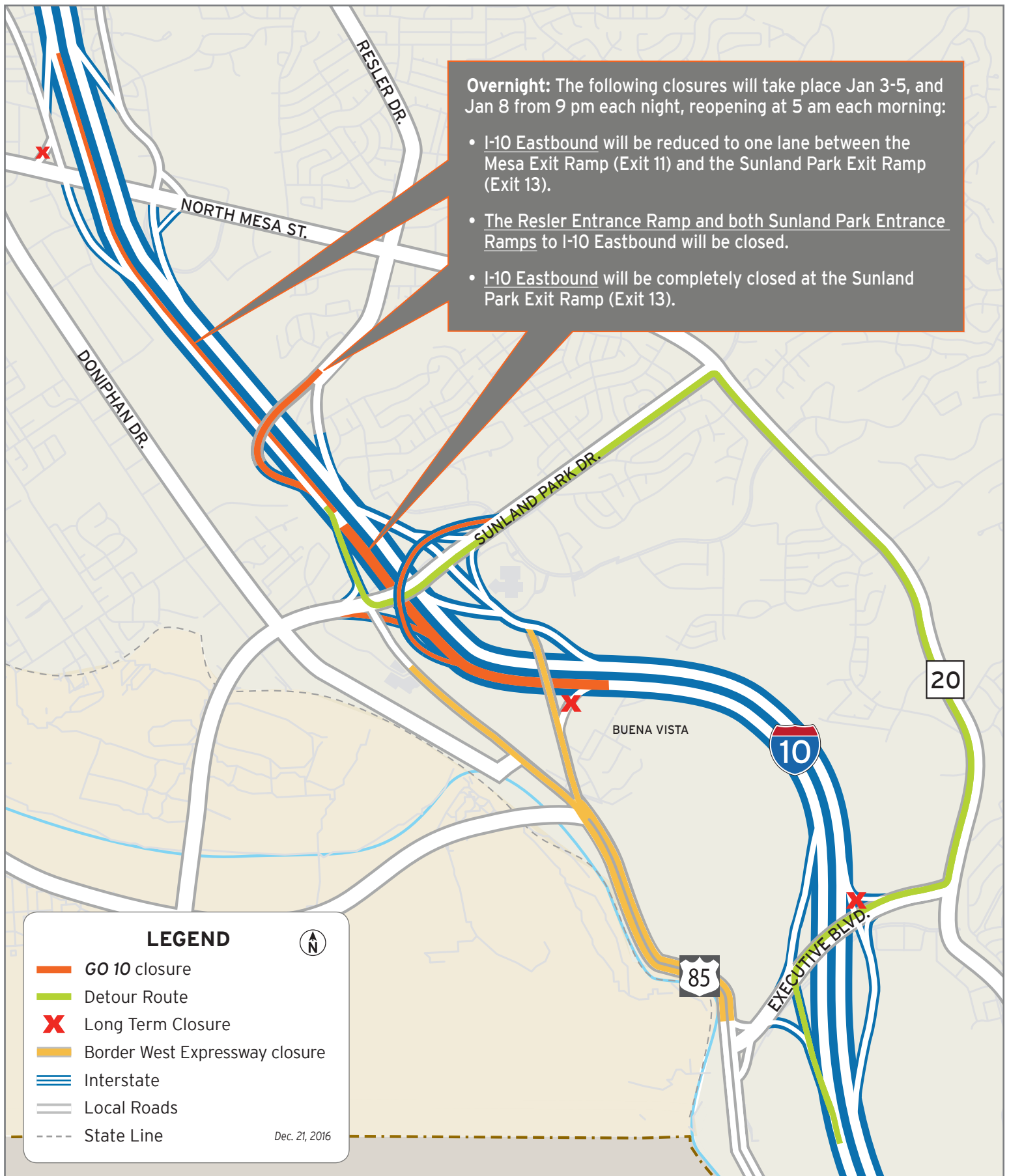




Overnight lane closures on I-10

Map 2 of 4

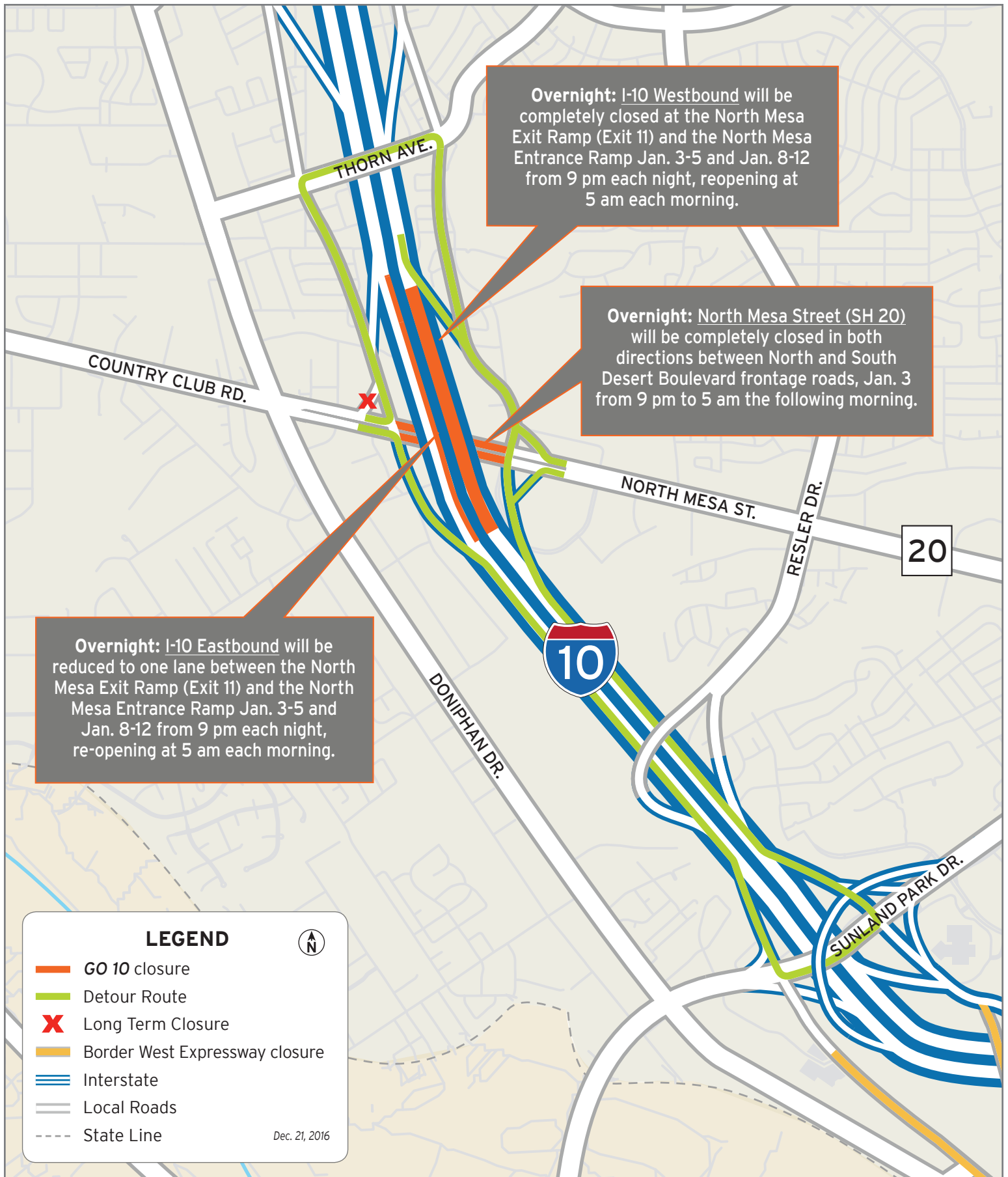




Overnight Closures on Eastbound I-10

Map 3 of 4





Overnight closures on I-10 at N Mesa Street

Map 4 of 4

