



**a TxDOT Project**  
For immediate release

## NEWS RELEASE

**EL PASO DISTRICT**

Jennifer Wright  
(915) 790-4340  
Jennifer.Wright3@txdot.gov

December 2, 2016

### **Crews will move 30 massive beams into place at the I-10/Mesa intersection starting Sunday night.**

#### **Paisano (US 85)**

##### **Continuous**

Saturday, Dec. 3 through Sunday, Dec. 11

Starting at 1 p.m. on Dec. 3, and re-opening at 5 a.m. on Dec. 11

- The Paisano Drive (US 85) Entrance Ramp to I-10 Westbound will be closed. To enter I-10 Westbound, drivers may use the Sunland Park Entrance Ramp.

Crews will be moving bridge beams into the area temporarily in preparation for the operation at I-10 and Mesa. [Map 1]

#### **I-10 and Mesa**

##### **Overnight**

Sunday, Dec. 4 through Thursday, Dec. 8

Sunday, Dec. 11 through Thursday, Dec. 15

Sunday, Dec. 18

9 p.m. each night to 6 a.m. each morning

- I-10 Westbound will be **completely closed** between the North Mesa Exit Ramp (Exit 11) and the North Mesa Entrance Ramp.
- I-10 Eastbound will be **reduced to one lane** between the North Mesa Exit Ramp (Exit 11) and North Mesa Entrance Ramp.
- North Mesa Street (SH 20) will be **completely closed** in both directions between North and South Desert Boulevard frontage roads.

**GO 10 recommends people avoid the intersection during the operation or follow the detour signs in place.**

[Map 2]

Crews will be moving 30 bridge beams into the area and using two cranes to set those beams into place. The longest beam is 164-feet long, more than six-feet tall, weighs 57 tons, and will completely span North Mesa Street (SH 20) once in place. This marks the first of three phases that will transform the I-10 Overpass at North Mesa Street (SH 20). **DETOUR:** The detour will be substantial for drivers who wish to travel along North Mesa Street (SH 20). An illustration is provided on Map 2.

- more -



The Texas Department of Transportation is responsible for maintaining 80,000 miles of road and for supporting aviation, rail, and public transportation across the state. GO 10 is a \$158 million reconstruction of Interstate 10 that spans approximately 6 miles on El Paso's West Side between Executive Center Boulevard and North Mesa Street. GO 10 features the addition of collector-distributor lanes and a new direct connector with Border West Expressway.

Maintain a Safe System • Address Congestion • Best-in-Class State Agency • Connect Texas Communities

An Equal Opportunity Employer

[www.go10elpaso.com](http://www.go10elpaso.com) | [facebook.com/go10elpaso](https://facebook.com/go10elpaso) | [twitter.com/go10ep](https://twitter.com/go10ep)



**a TxDOT Project**  
For immediate release

## NEWS RELEASE

### EL PASO DISTRICT

Jennifer Wright  
(915) 790-4340  
Jennifer.Wright3@txdot.gov

#### Executive

##### Overnight

Sunday, Dec. 4

9 p.m. to 5 a.m.

- The I-10 Westbound Executive Exit Ramp (Exit 16) will be closed.  
Crews will be removing barrier walls. [Map 1]

#### I-10 East

##### Daytime

Monday, Dec. 5 through Friday, Dec. 9

9 a.m. to 4 p.m. each day

- A left lane on I-10 Eastbound will be closed for about a half mile between North Mesa Street (SH 20) and the Resler Flyover Ramp.

Crews will be working on bridge columns. Fact: There are 29 bridges in the **GO 10** work zone and all of them will be expanded. [Map 1]

All closures are subject to change due to weather and other variables.

The latest information is posted on the traffic alerts page at [www.go10elpaso.com](http://www.go10elpaso.com) and on Twitter at [twitter.com/GO10EP](https://twitter.com/GO10EP).

###

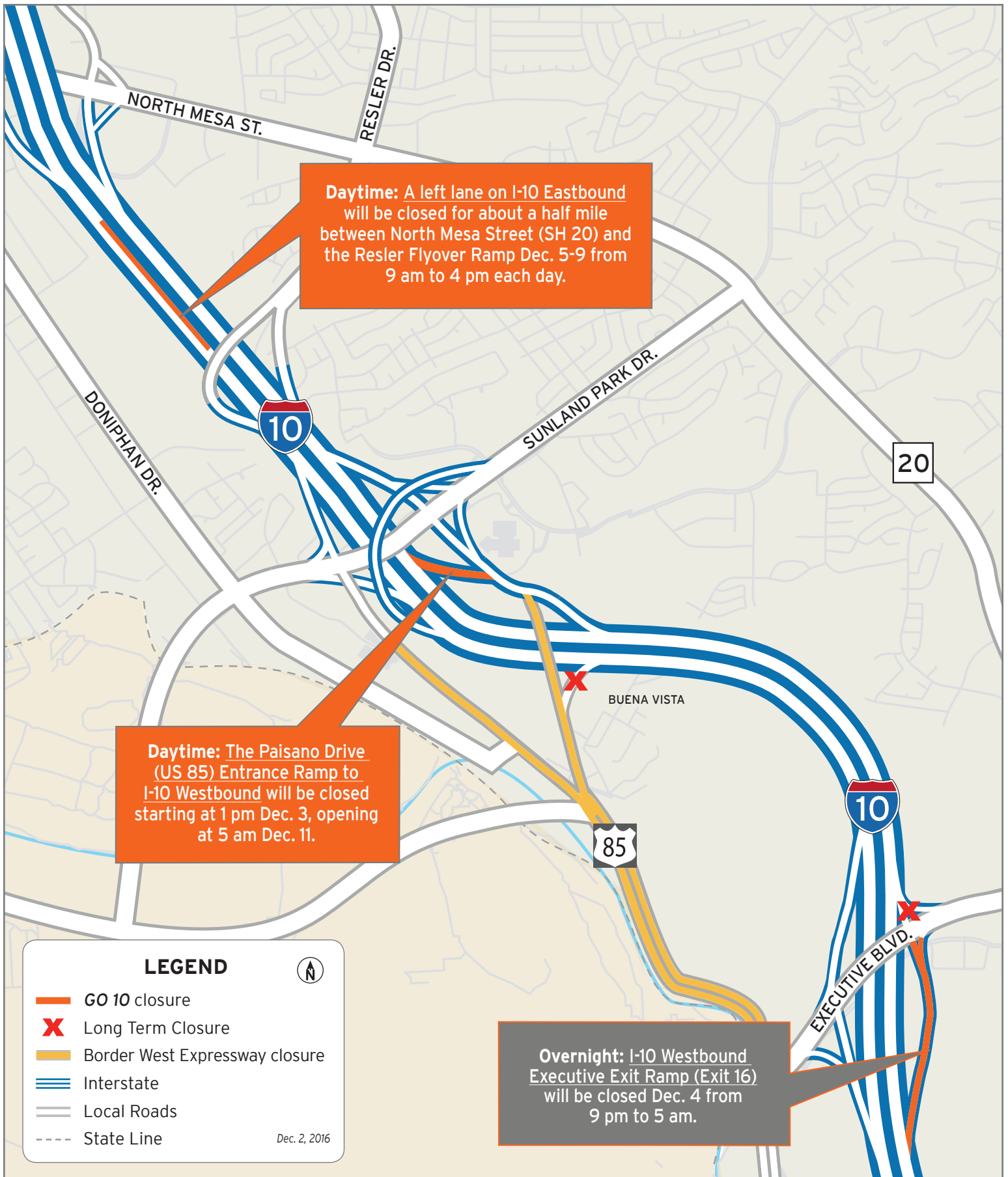


The Texas Department of Transportation is responsible for maintaining 80,000 miles of road and for supporting aviation, rail, and public transportation across the state. GO 10 is a \$158 million reconstruction of Interstate 10 that spans approximately 6 miles on El Paso's West Side between Executive Center Boulevard and North Mesa Street. GO 10 features the addition of collector-distributor lanes and a new direct connector with Border West Expressway.

Maintain a Safe System • Address Congestion • Best-in-Class State Agency • Connect Texas Communities

An Equal Opportunity Employer

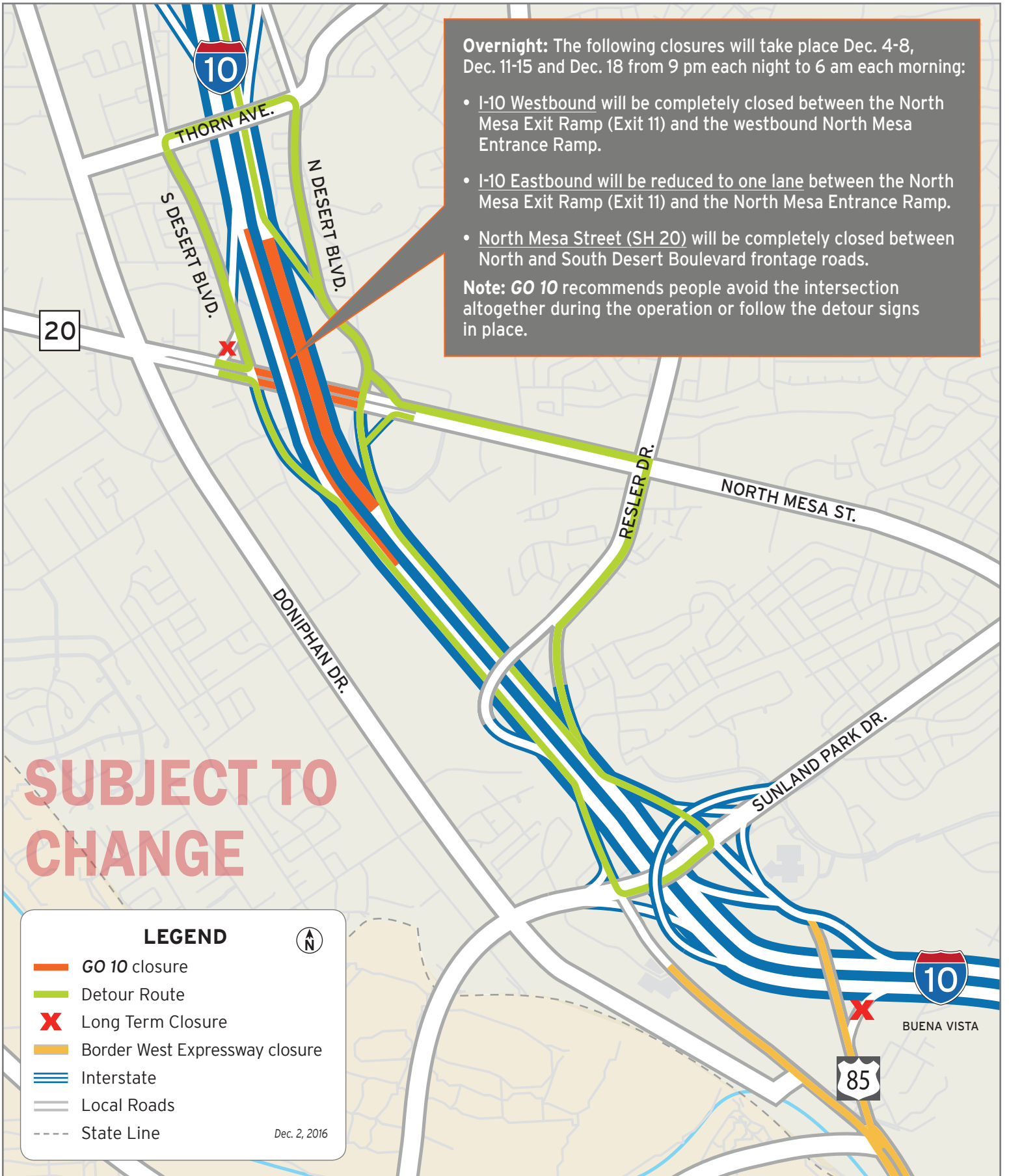
[www.go10elpaso.com](http://www.go10elpaso.com) | [facebook.com/go10elpaso](https://facebook.com/go10elpaso) | [twitter.com/go10ep](https://twitter.com/go10ep)



# Ramp and lane closures on I-10

Map 1 of 2





**SUBJECT TO CHANGE**



# Big closure coming to Mesa and I-10

Map 2 of 2

