



a TxDOT Project
For immediate release

NEWS RELEASE

EL PASO DISTRICT

Blanca Del Valle
(915) 790-4341
Blanca.DelValle@txdot.gov

August 19, 2016

I-10 EAST

Overnight

I-10 Eastbound will be reduced to one lane between the Sunland Park Overpass and the Executive Center Overpass **Sunday, Aug. 21 to Thursday, Aug. 25** from 9 pm each night to 5 am each morning. Crews will continue working on the new Paisano (US 85) Bridge and paving new I-10 Eastbound lanes. [Map 2]

SUNLAND PARK

Overnight

Sunland Park Flyover Entrance Ramp to I-10 Eastbound will be closed **Sunday, Aug. 21 to Thursday, Aug. 25** from 9 p.m. each night to 5 a.m. each morning. Crews will be working on I-10 East main lanes. [Map 2]

I-10 WEST

Daytime

The Executive Exit Ramp (Exit 16) from I-10 Westbound and a right lane on I-10 Westbound between Asarco and the Executive Exit Ramp (Exit 16) will be closed from 3 a.m. to 10 a.m. on **Sunday, Aug. 21**. Crews will be repairing traffic control delineators and replacing the guard rail near the exit ramp. [Map 2]

All Day Sunday

I-10 Westbound will be completely closed at the Sunland Park Exit Ramp (Exit 13) from 3 a.m. **Sunday, Aug. 21** to 5 a.m. **Monday, Aug. 22**. Westbound traffic will be detoured off of I-10 at the Sunland Park Exit (Exit 13) and will be allowed to immediately re-enter I-10 Westbound prior to the Sunland Park Overpass.

To ensure crews are protected during this operation, two left lanes on I-10 Eastbound will be closed between the Sunland Park Overpass and Buena Vista from 3 a.m. to 5 p.m. on **Sunday, Aug. 21**.

Crews will be removing steel girders from the existing Paisano (US 85) Overpass. [Map 1]

Overnight

I-10 Westbound will be completely closed at the Sunland Park Exit Ramp (Exit 13) **Monday, Aug. 22 through Thursday, Aug. 25** at 9 p.m. each night to 5 a.m. each following morning. Crews will be assembling steel girders for the new Paisano (US 85) Overpass. [Map 2]

###

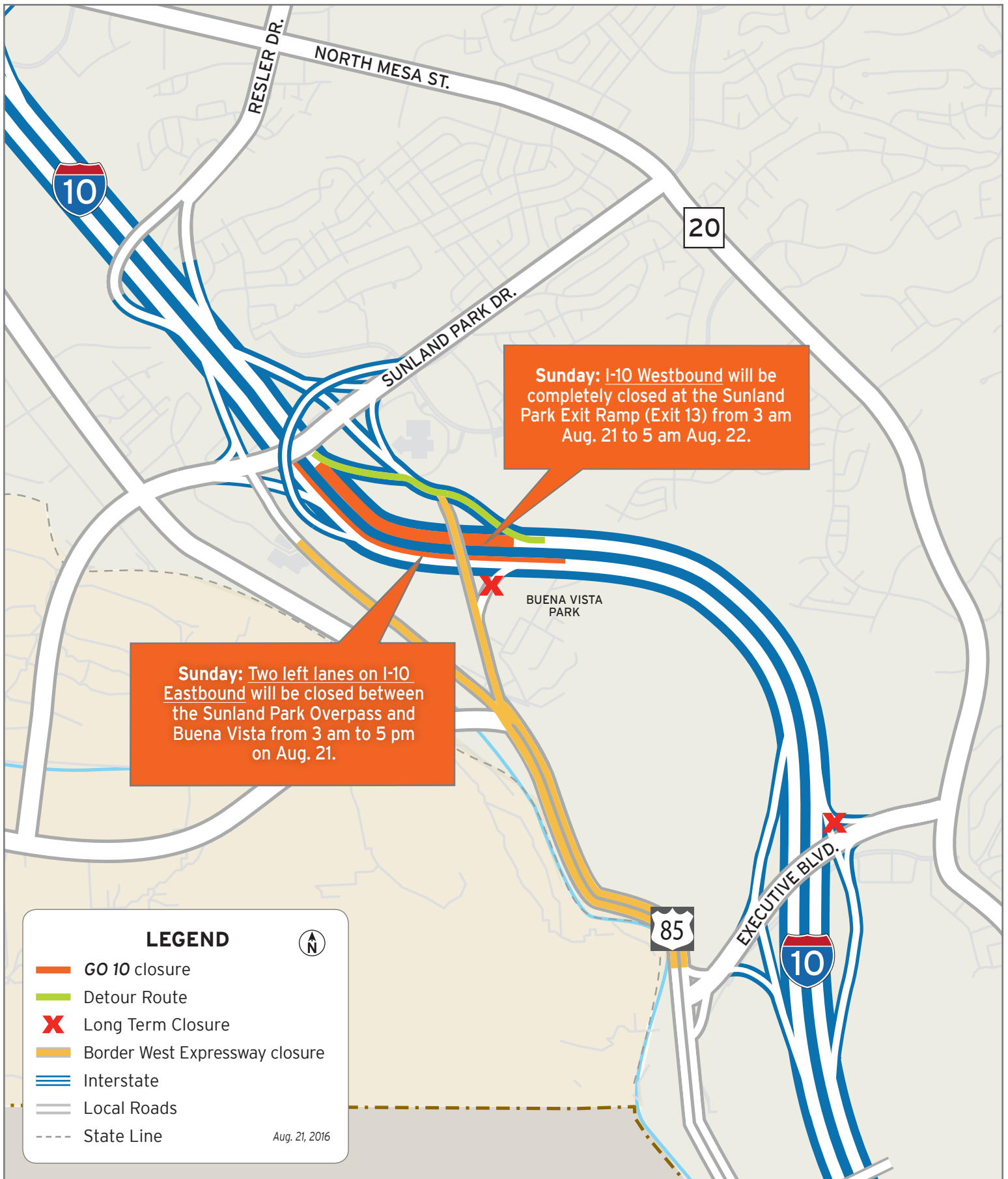
Closures are dependent on various factors such as weather.
Get the latest updates at facebook.com/go10elpaso and twitter.com/go10ep.



The Texas Department of Transportation is responsible for maintaining 80,000 miles of road and for supporting aviation, rail, and public transportation across the state. GO 10 is a \$158 million reconstruction of Interstate 10 that spans approximately 6 miles on El Paso's West Side between Executive Center Boulevard and North Mesa Street. GO 10 features the addition of collector-distributor lanes and a new direct connector with Border West Expressway.


Maintain a Safe System • Address Congestion • Best-in-Class State Agency • Connect Texas Communities
An Equal Opportunity Employer








www.go10elpaso.com | facebook.com/go10elpaso | twitter.com/go10ep



Sunday: I-10 Westbound will be completely closed at the Sunland Park Exit Ramp (Exit 13) from 3 am Aug. 21 to 5 am Aug. 22.

Sunday: Two left lanes on I-10 Eastbound will be closed between the Sunland Park Overpass and Buena Vista from 3 am to 5 pm on Aug. 21.

LEGEND 

-  GO 10 closure
-  Detour Route
-  Long Term Closure
-  Border West Expressway closure
-  Interstate
-  Local Roads
-  State Line

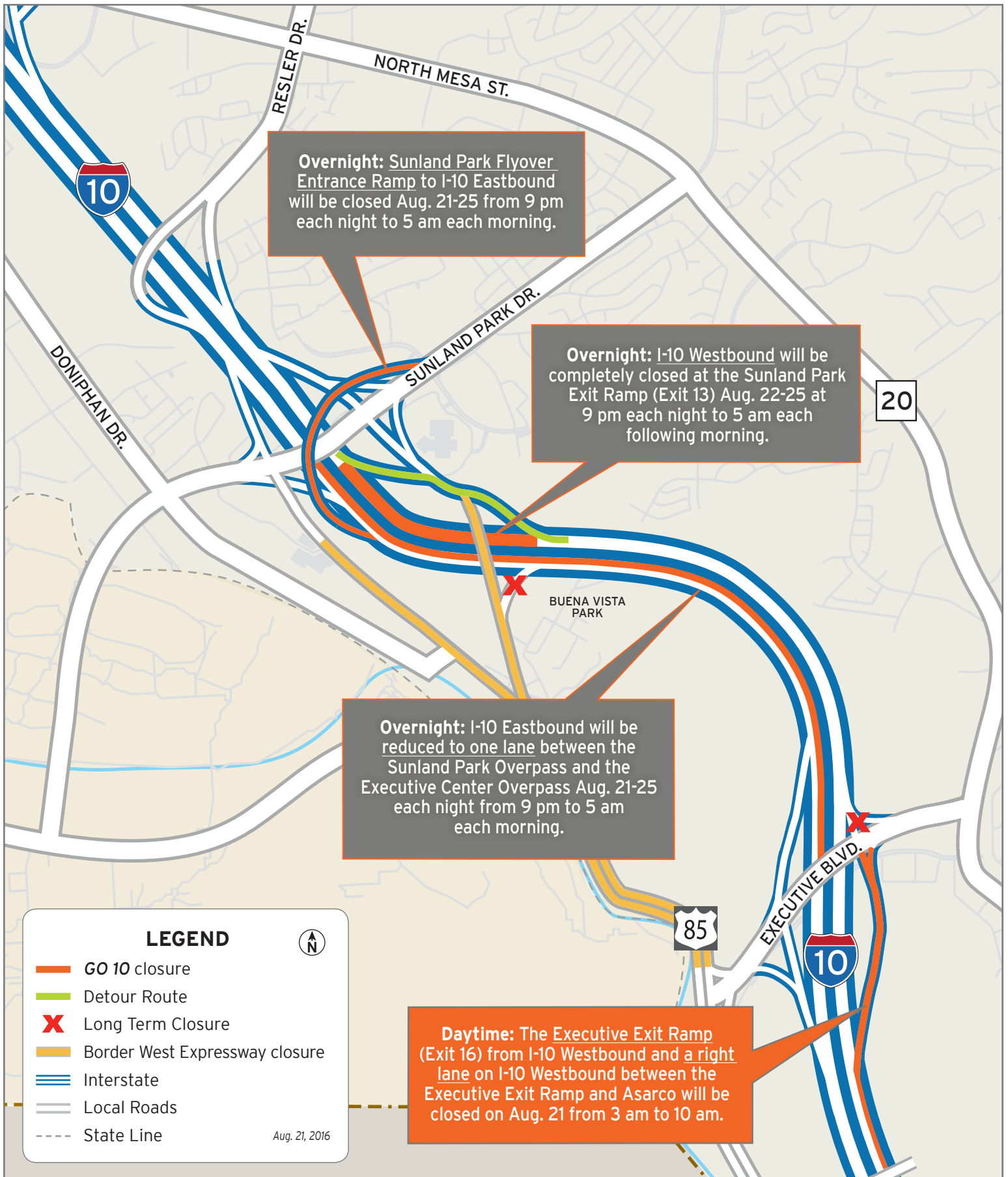
Aug. 21, 2016



Sunday closures on I-10

Map 1 of 2





Closures on I-10

Map 2 of 2

