



a TxDOT Project
For immediate release

NEWS RELEASE

EL PASO DISTRICT

Jennifer Wright
(915) 790-4340
Jennifer.Wright3@txdot.gov

September 16, 2016

Work intensifies at I-10 and North Mesa

I-10 West

Overnight

I-10 Westbound will be reduced to one lane between the Executive Center Overpass and the Paisano (US 85) Overpass Sunday, Sept. 18 through Thursday, Sept. 22 from 9 p.m. each night to 5 a.m. each morning. This closure is necessary so crews can continue paving of the new westbound lanes. [Map 1]

Mesa

Overnight

The following closures will take place Monday, Sept. 19 through Friday, Sept. 23 from 9 pm each night to 5 am each morning:

- Two right lanes on North Mesa Street (SH 20) will be closed between Osborne Drive and Remcon Circle (in the direction traveling toward Remcon Circle).
- A right turn lane coming from the westbound Mesa Exit Ramp onto North Mesa Street (SH 20) will be closed.

Crews will be installing a sewer line in the area and constructing new columns for the improved I-10 bridge over North Mesa Street. [Map 2]

Weeklong

The following closures will be in place continuously for five days starting at 9 a.m. Monday, Sept. 19, re-opening at 4 p.m. Friday, Sept. 23:

- A right lane on North Mesa Street (SH 20) will be closed between South Desert Boulevard and Osborne Drive (in the direction traveling toward Doniphan Drive).
- A right lane on North Mesa Street (SH 20) will be closed between Osborne Drive and Remcon Circle (in the direction traveling toward Remcon Circle).

Crews will be working on a nearby waterline and a sewer line. [Map 2]

When work is complete, the I-10 intersection with North Mesa Street (SH 20) will be completely transformed with improved turning movements, added lanes on South Desert Boulevard, and a complete bridge span over North Mesa Street (SH 20). See rendering on next page.

Page 1 of 2



The Texas Department of Transportation is responsible for maintaining 80,000 miles of road and for supporting aviation, rail, and public transportation across the state. GO 10 is a \$158 million reconstruction of Interstate 10 that spans approximately 6 miles on El Paso's West Side between Executive Center Boulevard and North Mesa Street. GO 10 features the addition of collector-distributor lanes and a new direct connector with Border West Expressway.

Maintain a Safe System • Address Congestion • Best-in-Class State Agency • Connect Texas Communities

An Equal Opportunity Employer

www.go10elpaso.com | facebook.com/go10elpaso | twitter.com/go10ep



a TxDOT Project
For immediate release

NEWS RELEASE

EL PASO DISTRICT

Jennifer Wright
(915) 790-4340
Jennifer.Wright3@txdot.gov



Resler

Daytime

The Resler Flyover Entrance Ramp to I-10 Eastbound will be closed on Tuesday, Sept. 20 from 10 a.m. to noon. Crews will be preparing the area for abatement work. [Map 1]

Go to go10elpaso.com and click on “flyover video” to see a video rendering of the entire six-mile transformation.

Page 2 of 2

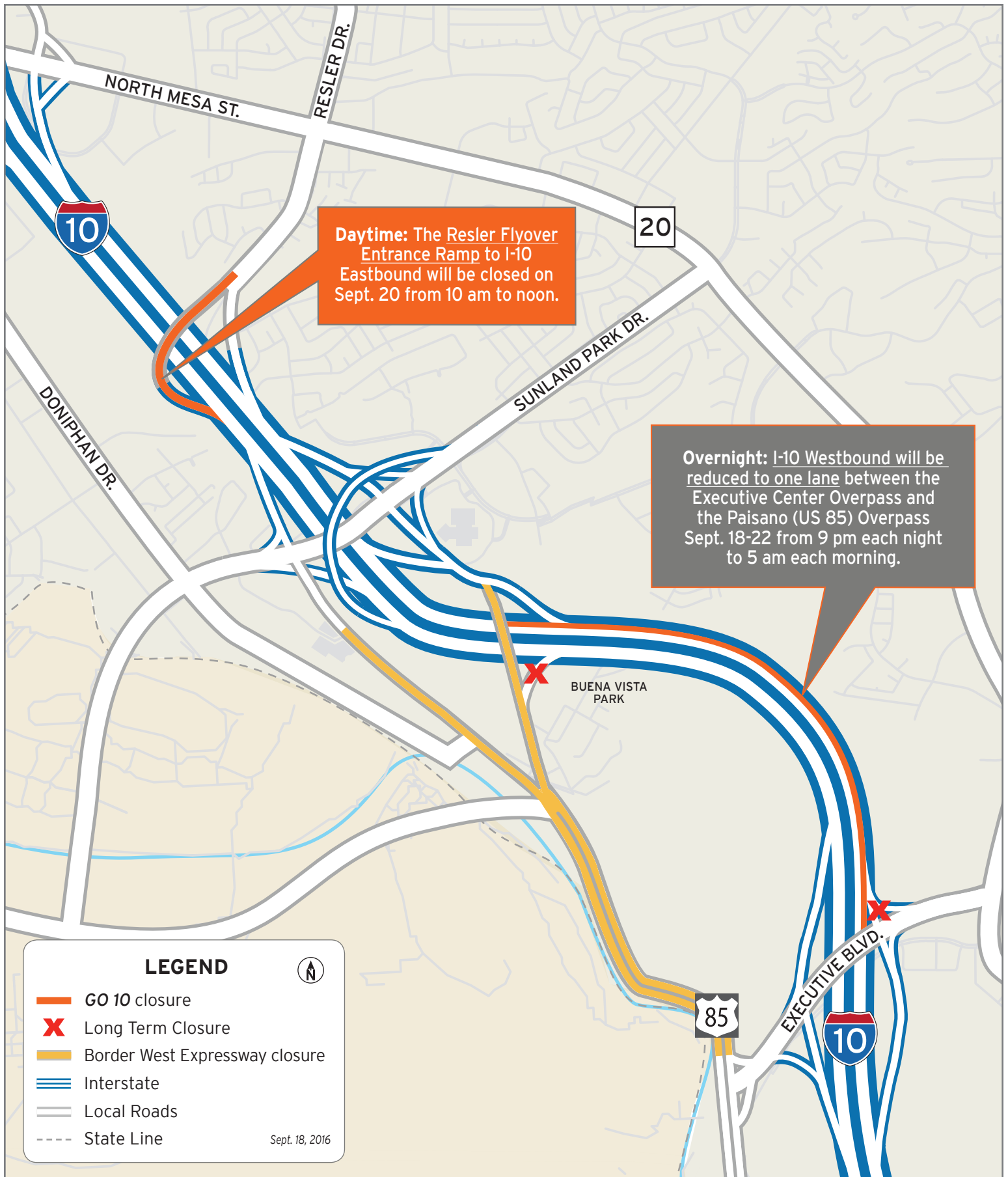


The Texas Department of Transportation is responsible for maintaining 80,000 miles of road and for supporting aviation, rail, and public transportation across the state. GO 10 is a \$158 million reconstruction of Interstate 10 that spans approximately 6 miles on El Paso’s West Side between Executive Center Boulevard and North Mesa Street. GO 10 features the addition of collector-distributor lanes and a new direct connector with Border West Expressway.

Maintain a Safe System • Address Congestion • Best-in-Class State Agency • Connect Texas Communities

An Equal Opportunity Employer

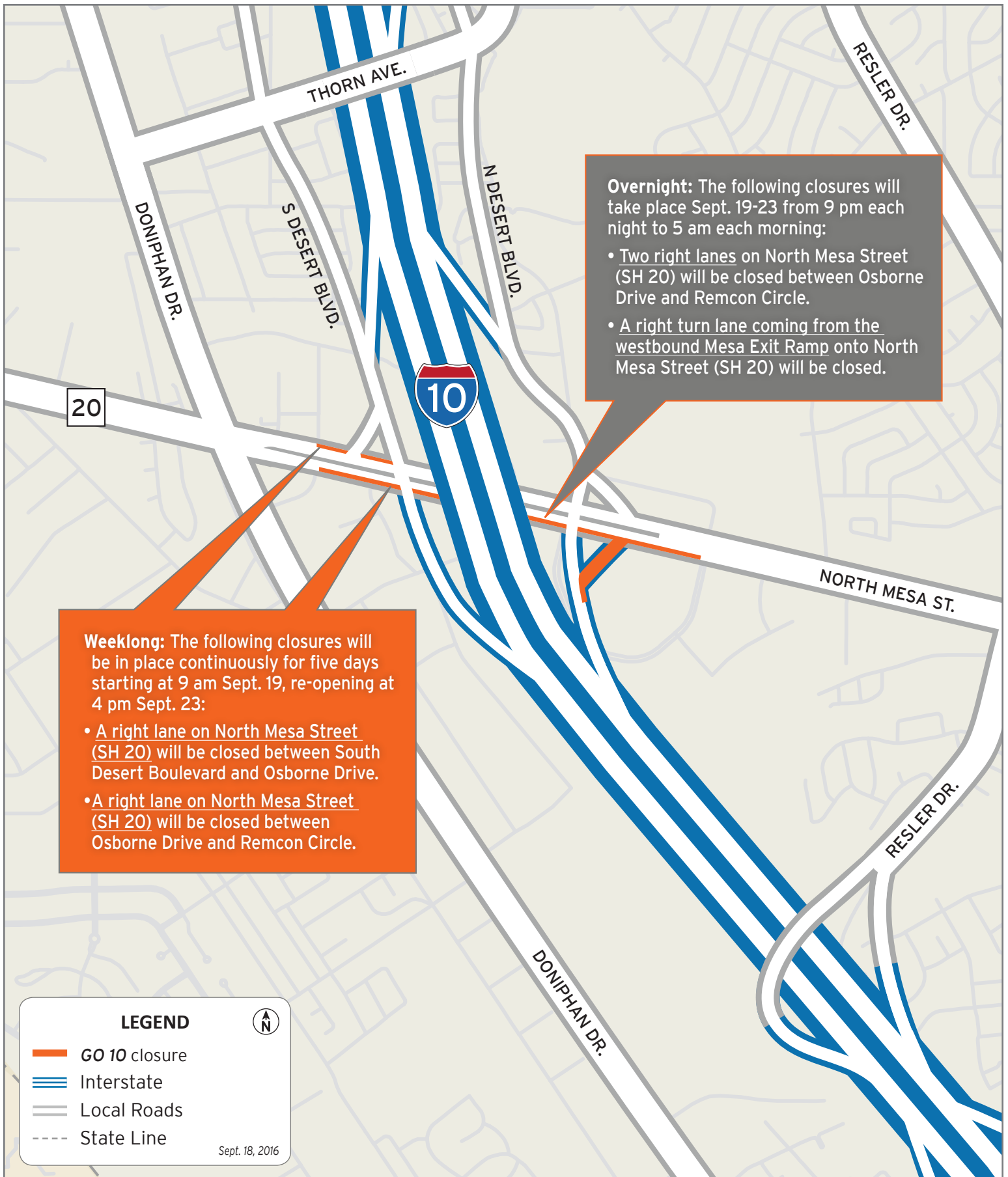
www.go10elpaso.com | facebook.com/go10elpaso | twitter.com/go10ep



Closure on I-10 and Resler Flyover

Map 1 of 2





Closures on North Mesa Street

Map 2 of 2

