



**a TxDOT Project**  
For immediate release

## NEWS RELEASE

**EL PASO DISTRICT**

Jennifer Wright  
(915) 790-4340  
Jennifer.Wright3@txdot.gov

July 28, 2017

### **GO 10 targets August 2<sup>nd</sup> to switch I-10 West traffic onto new collector-distributor (CD) lanes between Executive and Buena Vista.**

#### **I-10 & Sunland**

##### **Five Nights**

Sunday, July 30 through Thursday, August 3

9 p.m. each night to 6 a.m. each following morning

- The Sunland Park Flyover Entrance Ramp to I-10 East closes. People may enter I-10 East from the other Sunland Park Entrance Ramp (on the Doniphan side of I-10).

Crews will be placing steel beams for the new flyover ramp. [No Map]

##### **Two Nights**

Sunday, July 30 and Monday, July 31

9 p.m. each night to 6 a.m. each morning

- I-10 in both directions closes **completely** at the Sunland Park Exits (Exit 13).
- The Sunland Park Overpass at I-10 closes.
- The Sunland Park Entrance Ramp to I-10 Westbound will undergo a 15-minute rolling closure.

I-10 Detours: I-10 Westbound traffic will exit at Sunland Park (Exit 13) and go to North Mesa Street (SH 20); then, take North Mesa Street to the I-10 interchange where traffic may re-enter I-10 West. I-10 Eastbound traffic will exit at Sunland Park (Exit 13) and re-enter I-10 East at the next entrance ramp. Follow the detour signs in place.

Sunland Detours: Northbound vehicles on Sunland Park Dr (coming from Doniphan Dr) will turn right on Paisano Dr and enter I-10 East. Vehicles will exit at Executive Center (Exit 16), then take Executive Center Blvd to North Mesa St (SH 20). Finally, vehicles will take North Mesa St (SH 20) to Sunland Park Dr. Southbound vehicles on Sunland Park Dr (coming from Mesa Hills Dr) will be re-directed back to North Mesa Street and follow the detour signs to enter I-10 East or I-10 West.

Crews continue to build the new Sunland Flyover Ramp. [Map 1]

##### **Two Nights**

Tuesday, August 1 and Thursday, August 3

9 p.m. each night to 6 a.m. each morning

- I-10 in both directions closes **completely** at the Sunland Park Exits (Exit 13).
- The Sunland Park Entrance Ramp to I-10 Westbound closes.



page 1 of 4

The Texas Department of Transportation is responsible for maintaining 80,000 miles of road and for supporting aviation, rail, and public transportation across the state. GO 10 is a \$158 million reconstruction of Interstate 10 that spans approximately 6 miles on El Paso's West Side between Executive Center Boulevard and North Mesa Street. GO 10 features the addition of collector-distributor lanes and a new direct connector with Border West Expressway.

Maintain a Safe System • Address Congestion • Best-in-Class State Agency • Connect Texas Communities

An Equal Opportunity Employer

[www.go10elpaso.com](http://www.go10elpaso.com) | [facebook.com/go10elpaso](https://facebook.com/go10elpaso) | [twitter.com/go10ep](https://twitter.com/go10ep)



# NEWS RELEASE

## EL PASO DISTRICT

Jennifer Wright

(915) 790-4340

Jennifer.Wright3@txdot.gov

### **a TxDOT Project**

For immediate release

Detour: I-10 Westbound traffic will exit at Sunland Park (Exit 13) and go to North Mesa Street (SH 20); then, take North Mesa Street to the I-10 interchange where traffic may re-enter I-10 West. I-10 Eastbound traffic will exit at Sunland Park (Exit 13) and re-enter I-10 East at the next entrance ramp. Follow the detour signs.

Crews continue to build new bridges over I-10 at Sunland Park. [Map 2]

### **I-10 & N Mesa**

#### **One Night**

Monday, July 31

9 p.m. to 6 a.m.

- I-10 Eastbound closes **completely** at the North Mesa Exit Ramp (Exit 11).
- The eastbound North Mesa Exit Ramp and eastbound North Mesa Entrance Ramp closes.

Detour: I-10 Eastbound traffic may exit at Redd Road (Exit 9) and take Doniphan Drive to North Mesa Street (SH 20).

Crews will be placing beams for the all-new I-10 East Overpass. [Map 3]

#### **Three Days**

Monday, July 31 through Wednesday, August 2

9 a.m. to 4 p.m. each day

- The North Mesa Exit Ramp (Exit 11) from I-10 Eastbound closes.

Detour: I-10 Eastbound traffic may exit at Redd Road (Exit 9) and take Doniphan Drive to North Mesa Street (SH 20).

Crews will be setting concrete beams. [Map 5]

#### **Five Days**

Monday, July 31 through Friday, August 4

9 a.m. to 4 p.m. daily

- The right lane on North Mesa Street (SH 20, eastbound) – in the direction headed toward Remcon Circle – closes between Osborne Drive and the I-10 Westbound Exit Ramp.
- The right lane on North Mesa Street (SH 20, westbound) – in the direction headed toward Doniphan Drive – closes between North Desert Boulevard and Osborne Drive.

Crews will be working on bridge columns and ITS. [Map 5]

page 2 of 4



The Texas Department of Transportation is responsible for maintaining 80,000 miles of road and for supporting aviation, rail, and public transportation across the state. GO 10 is a \$158 million reconstruction of Interstate 10 that spans approximately 6 miles on El Paso's West Side between Executive Center Boulevard and North Mesa Street. GO 10 features the addition of collector-distributor lanes and a new direct connector with Border West Expressway.

Maintain a Safe System • Address Congestion • Best-in-Class State Agency • Connect Texas Communities

An Equal Opportunity Employer

[www.go10elpaso.com](http://www.go10elpaso.com) | [facebook.com/go10elpaso](https://facebook.com/go10elpaso) | [twitter.com/go10ep](https://twitter.com/go10ep)



**a TxDOT Project**  
For immediate release

# NEWS RELEASE

## EL PASO DISTRICT

Jennifer Wright  
(915) 790-4340  
Jennifer.Wright3@txdot.gov

### One Day

Tuesday, August 1

9 a.m. to 4 p.m.

- South Desert Boulevard will be closed between Thorn Avenue and North Mesa Street (SH 20).

Detour: I-10 Eastbound traffic may exit at Redd Road (Exit 9) and take Doniphan Drive to North Mesa Street (SH 20).

Crews will be setting concrete beams. [Map 5]

### I-10 @ Executive and Sunland

#### One Night

Wednesday, August 2

9 p.m. to 6 a.m.

- I-10 Westbound closes **completely** at the Executive Center Exit.
- I-10 Eastbound closes **completely** at the Sunland Park Exit.
- The Sunland Park Entrance Ramp to I-10 Westbound closes.
- The Sunland Flyover Entrance Ramp to I-10 Eastbound closes.

Detours: I-10 Eastbound traffic will exit at Sunland Park and re-enter I-10 at the next entrance ramp. I-10 Westbound traffic will exit at Executive Center (Exit 16), take Executive Center Boulevard to North Mesa Street (SH 20), then take North Mesa Street to the I-10 interchange where vehicles may re-enter I-10 West.

Crews will switch traffic on I-10 Westbound to the all-new collector-distributor (CD) lanes between Executive Center and Buena Vista. Crew will also continue building new bridges over I-10 at Sunland Park. [Map 4]

## CLOSURE FORECAST

The following closures are still developing, meaning details such as dates could change:

### Overnight

Sunday, August 6 through Thursday, August 10

9 p.m. each night to 6 a.m. each morning

- I-10 in both directions closes **completely** at the Sunland Park Exits (Exit 13).
- The Sunland Park Overpass at I-10 closes **completely**.
- The Sunland Entrance Ramp to I-10 Westbound closes **completely**.

page 3 of 4



The Texas Department of Transportation is responsible for maintaining 80,000 miles of road and for supporting aviation, rail, and public transportation across the state. GO 10 is a \$158 million reconstruction of Interstate 10 that spans approximately 6 miles on El Paso's West Side between Executive Center Boulevard and North Mesa Street. GO 10 features the addition of collector-distributor lanes and a new direct connector with Border West Expressway.

Maintain a Safe System • Address Congestion • Best-in-Class State Agency • Connect Texas Communities

An Equal Opportunity Employer

[www.go10elpaso.com](http://www.go10elpaso.com) | [facebook.com/go10elpaso](https://facebook.com/go10elpaso) | [twitter.com/go10ep](https://twitter.com/go10ep)



**a TxDOT Project**  
For immediate release

## NEWS RELEASE

### EL PASO DISTRICT

Jennifer Wright  
(915) 790-4340  
Jennifer.Wright3@txdot.gov

#### Overnight

Monday, August 7 through Thursday, August 10

9 p.m. each night to 6 a.m. each morning

- The Sunland Entrance Ramp to I-10 East (on the Doniphan side of I-10) will close.

All closure start times and end times are approximate.  
All closures are subject to change.

page 4 of 4

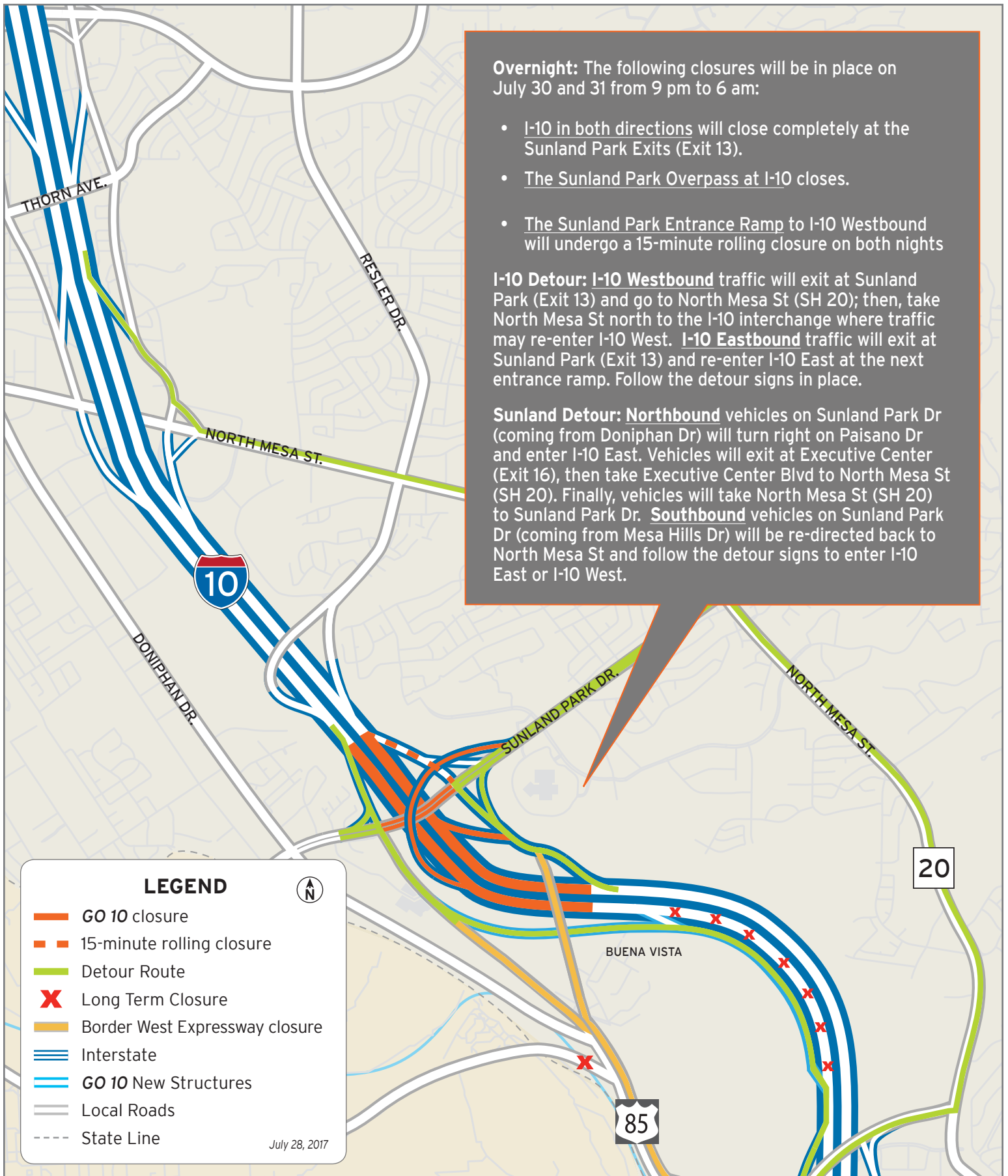


The Texas Department of Transportation is responsible for maintaining 80,000 miles of road and for supporting aviation, rail, and public transportation across the state. GO 10 is a \$158 million reconstruction of Interstate 10 that spans approximately 6 miles on El Paso's West Side between Executive Center Boulevard and North Mesa Street. GO 10 features the addition of collector-distributor lanes and a new direct connector with Border West Expressway.

Maintain a Safe System • Address Congestion • Best-in-Class State Agency • Connect Texas Communities

An Equal Opportunity Employer

[www.go10elpaso.com](http://www.go10elpaso.com) | [facebook.com/go10elpaso](https://facebook.com/go10elpaso) | [twitter.com/go10ep](https://twitter.com/go10ep)



**Overnight:** The following closures will be in place on July 30 and 31 from 9 pm to 6 am:

- I-10 in both directions will close completely at the Sunland Park Exits (Exit 13).
- The Sunland Park Overpass at I-10 closes.
- The Sunland Park Entrance Ramp to I-10 Westbound will undergo a 15-minute rolling closure on both nights

**I-10 Detour:** I-10 Westbound traffic will exit at Sunland Park (Exit 13) and go to North Mesa St (SH 20); then, take North Mesa St north to the I-10 interchange where traffic may re-enter I-10 West. I-10 Eastbound traffic will exit at Sunland Park (Exit 13) and re-enter I-10 East at the next entrance ramp. Follow the detour signs in place.

**Sunland Detour:** Northbound vehicles on Sunland Park Dr (coming from Doniphan Dr) will turn right on Paisano Dr and enter I-10 East. Vehicles will exit at Executive Center (Exit 16), then take Executive Center Blvd to North Mesa St (SH 20). Finally, vehicles will take North Mesa St (SH 20) to Sunland Park Dr. Southbound vehicles on Sunland Park Dr (coming from Mesa Hills Dr) will be re-directed back to North Mesa St and follow the detour signs to enter I-10 East or I-10 West.

**LEGEND**

- GO 10 closure
- 15-minute rolling closure
- Detour Route
- Long Term Closure
- Border West Expressway closure
- Interstate
- GO 10 New Structures
- Local Roads
- State Line

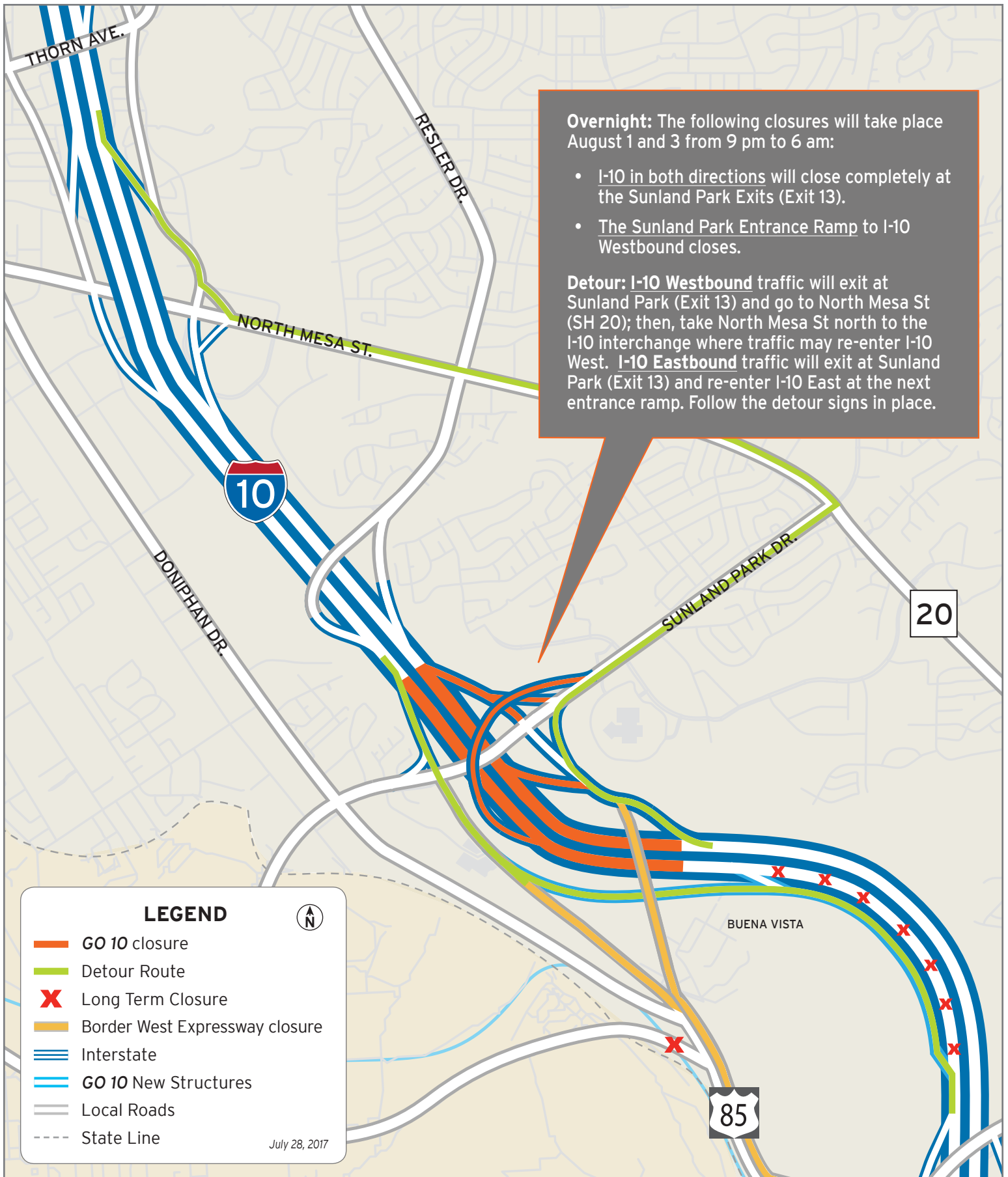
July 28, 2017



**Crews continue building new bridges over I-10 at Sunland**

Map 1 of 5

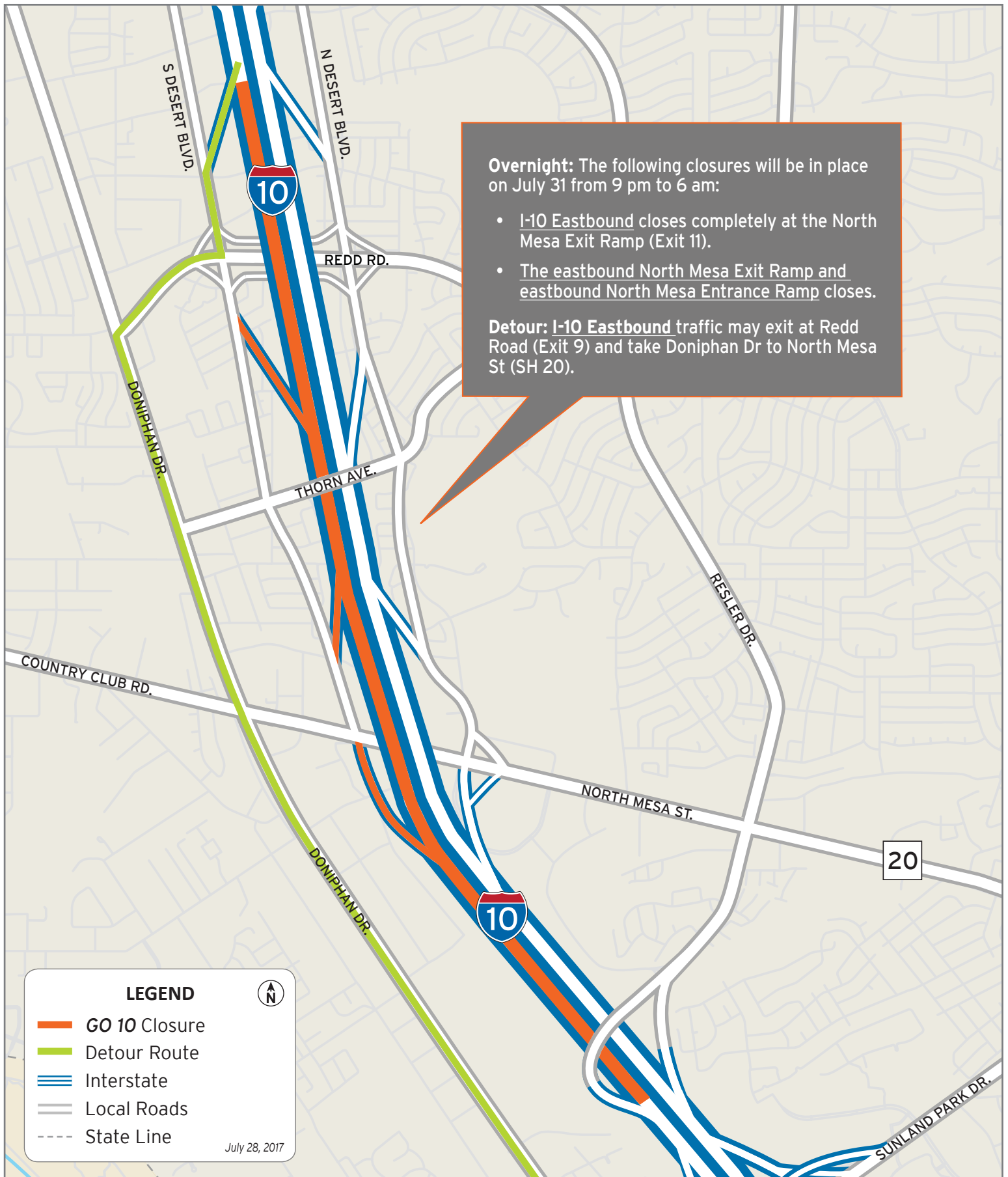




# Crews continue building new bridges over I-10 at Sunland

Map 2 of 5





# Overnight closures at Mesa

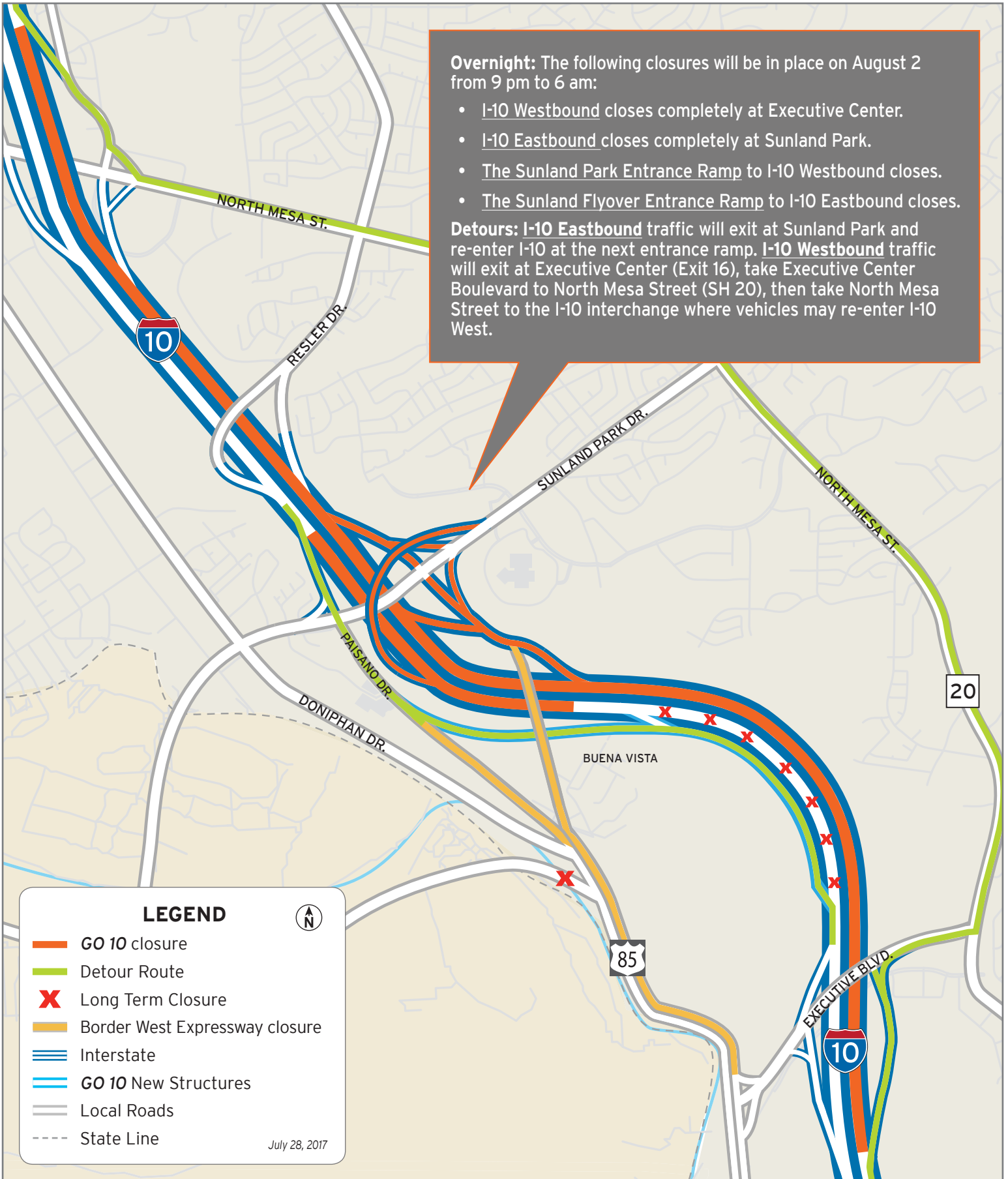
Map 3 of 5



**Overnight:** The following closures will be in place on August 2 from 9 pm to 6 am:

- I-10 Westbound closes completely at Executive Center.
- I-10 Eastbound closes completely at Sunland Park.
- The Sunland Park Entrance Ramp to I-10 Westbound closes.
- The Sunland Flyover Entrance Ramp to I-10 Eastbound closes.

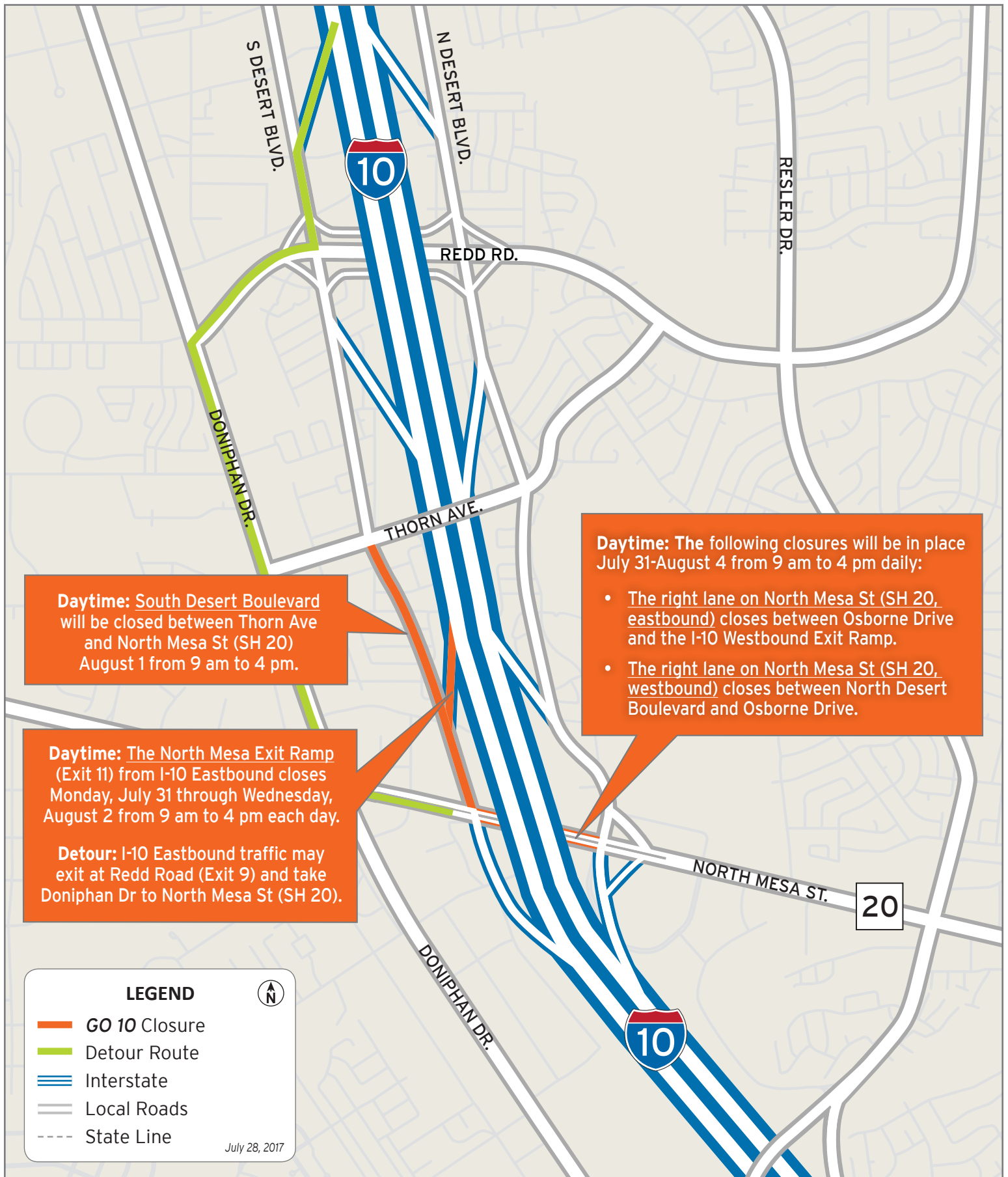
**Detours:** I-10 Eastbound traffic will exit at Sunland Park and re-enter I-10 at the next entrance ramp. I-10 Westbound traffic will exit at Executive Center (Exit 16), take Executive Center Boulevard to North Mesa Street (SH 20), then take North Mesa Street to the I-10 interchange where vehicles may re-enter I-10 West.



Crews will switch I-10 West traffic onto new CD lanes  
Map 4 of 5







# Closures at I-10 and Mesa

Map 5 of 5

