



**a TxDOT Project**  
For immediate release

## NEWS RELEASE

### EL PASO DISTRICT

Jennifer Wright  
(915) 790-4340  
Jennifer.Wright3@txdot.gov

Feb. 10, 2017

## Last week's closures still in effect. One new closure will detour traffic at Redd Road for one night.

### I-10 & Mesa

#### Continuous for 6 weeks

The following closures started on Jan. 18 and will continue until 4 p.m. on Friday, Feb. 24:

- The right turn-only lane on eastbound North Mesa Street (SH 20) will close between Osborne Drive and South Desert Boulevard.
- The right through lane on eastbound North Mesa Street (SH 20) will close between Osborne Drive and South Desert Blvd, but only when necessary and only during the day from 9 a.m. to 4 p.m.

Note: Two lanes will remain open on N. Mesa (SH 20) and business access will be open at all times.

Crews will be installing underground utilities. [Map 2]

#### Overnight

Sunday, Feb. 12 through Thursday, Feb. 16

9 p.m. each night to 6 a.m. each morning

- I-10 in both directions will reduce to one lane at the North Mesa intersection overpass between Thorn Avenue and approximately 100 feet east of North Mesa Street (SH 20).

Crews will be moving dirt. [No Map]

#### Overnight

Wednesday, Feb. 15 and Thursday, Feb. 16

9 p.m. each night to 6 a.m. each morning

- I-10 Eastbound will completely close after the North Mesa Exit Ramp (Exit 11).

Detour: Motorists on I-10 East will exit at North Mesa Street (Exit 11), take Doniphan Drive to Sunland Park Drive, and will be able to re-enter I-10 from Sunland Park Drive. **Keep to the detour route.** Doniphan Drive does not provide access to I-10 nor to US 85 after Sunland Park Drive.

Crews will continue building the new I-10 bridge over North Mesa Street (SH 20). [Map 2]

page 1 of 3



The Texas Department of Transportation is responsible for maintaining 80,000 miles of road and for supporting aviation, rail, and public transportation across the state. GO 10 is a \$158 million reconstruction of Interstate 10 that spans approximately 6 miles on El Paso's West Side between Executive Center Boulevard and North Mesa Street. GO 10 features the addition of collector-distributor lanes and a new direct connector with Border West Expressway.

Maintain a Safe System • Address Congestion • Best-in-Class State Agency • Connect Texas Communities

An Equal Opportunity Employer

[www.go10elpaso.com](http://www.go10elpaso.com) | [facebook.com/go10elpaso](https://facebook.com/go10elpaso) | [twitter.com/go10ep](https://twitter.com/go10ep)




**a TxDOT Project**  
For immediate release

# NEWS RELEASE

## EL PASO DISTRICT

Jennifer Wright  
(915) 790-4340  
Jennifer.Wright3@txdot.gov

### I-10 & Redd

-  **NEW – Overnight**  
Tuesday, Feb. 14  
9 p.m. to 6 a.m. the following morning
- I-10 Eastbound will completely close after Redd Road (Exit 9).  
Detour: Motorists on I-10 East will exit at Redd Road (Exit 9), take Doniphan Drive (SH 20) to Sunland Park Drive, and will be able to re-enter I-10 from Sunland Park Drive. **Keep to the detour route.** Doniphan Drive does not provide access to I-10 nor to US 85 after Sunland Park Drive.  
Crews will remove signage from over I-10 East. [Map 1]

### I-10 & Resler

#### Overnight

Sunday, Feb. 12 through Thursday, Feb. 16

9 p.m. each night to 6 a.m. each morning

- The Resler Flyover Ramp to I-10 Eastbound will close.  
Crews will be working on the existing ramp structure. [Map 1]

#### Overnight

Sunday, Feb. 12 through Tuesday, Feb. 14

9 p.m. each night to 6 a.m. each morning

- I-10 Westbound will completely close after the Resler Exit Ramp (Exit 12).  
Detour: Motorists on I-10 West will exit at Resler Drive (Exit 12) and take North Mesa Street (SH 20) westward to I-10 where they can re-enter I-10 West.  
Crews are working on the new Resler ramp. [Map 3]

### I-10 & Sunland

#### Daytime

Monday, Feb. 13 through Friday, Feb. 17

9 a.m. to 4 p.m. each day

- One lane on the two-lane Sunland Park Exit Ramp (Exit 13, Westbound) will close.  
The closure is required to give crews access to the work site. [No Map]

page 2 of 3



The Texas Department of Transportation is responsible for maintaining 80,000 miles of road and for supporting aviation, rail, and public transportation across the state. GO 10 is a \$158 million reconstruction of Interstate 10 that spans approximately 6 miles on El Paso's West Side between Executive Center Boulevard and North Mesa Street. GO 10 features the addition of collector-distributor lanes and a new direct connector with Border West Expressway.

Maintain a Safe System • Address Congestion • Best-in-Class State Agency • Connect Texas Communities

An Equal Opportunity Employer

[www.go10elpaso.com](http://www.go10elpaso.com) | [facebook.com/go10elpaso](https://facebook.com/go10elpaso) | [twitter.com/go10ep](https://twitter.com/go10ep)



**a TxDOT Project**  
For immediate release

## NEWS RELEASE

### EL PASO DISTRICT

Jennifer Wright  
(915) 790-4340  
Jennifer.Wright3@txdot.gov

Closure start times and end times are approximate.  
All closures are subject to change.

Find the latest information on the traffic alerts page at [go10elpaso.com](http://go10elpaso.com) or at [twitter.com/GO10EP](https://twitter.com/GO10EP).

page 3 of 3

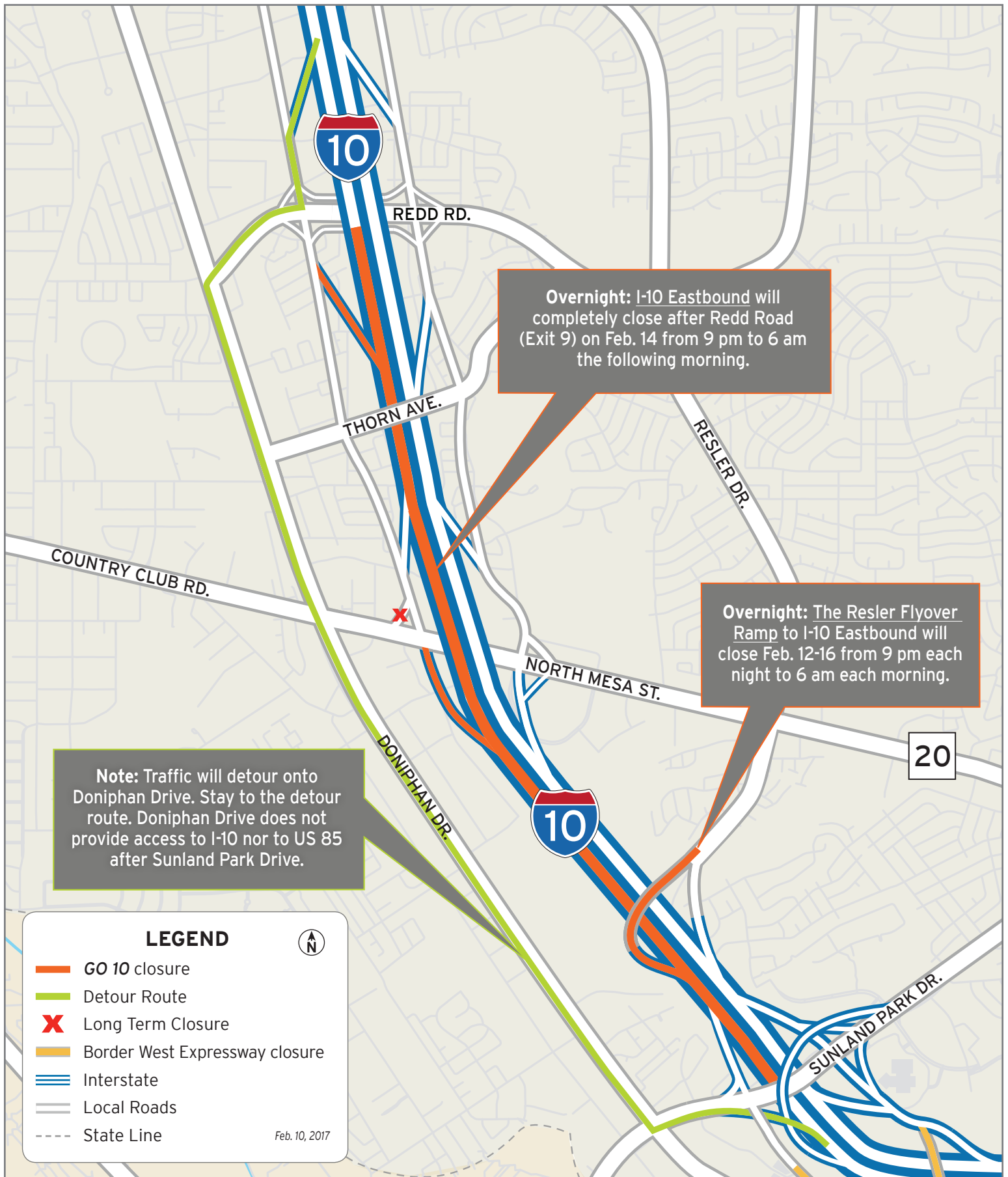


The Texas Department of Transportation is responsible for maintaining 80,000 miles of road and for supporting aviation, rail, and public transportation across the state. GO 10 is a \$158 million reconstruction of Interstate 10 that spans approximately 6 miles on El Paso's West Side between Executive Center Boulevard and North Mesa Street. GO 10 features the addition of collector-distributor lanes and a new direct connector with Border West Expressway.

Maintain a Safe System • Address Congestion • Best-in-Class State Agency • Connect Texas Communities

*An Equal Opportunity Employer*

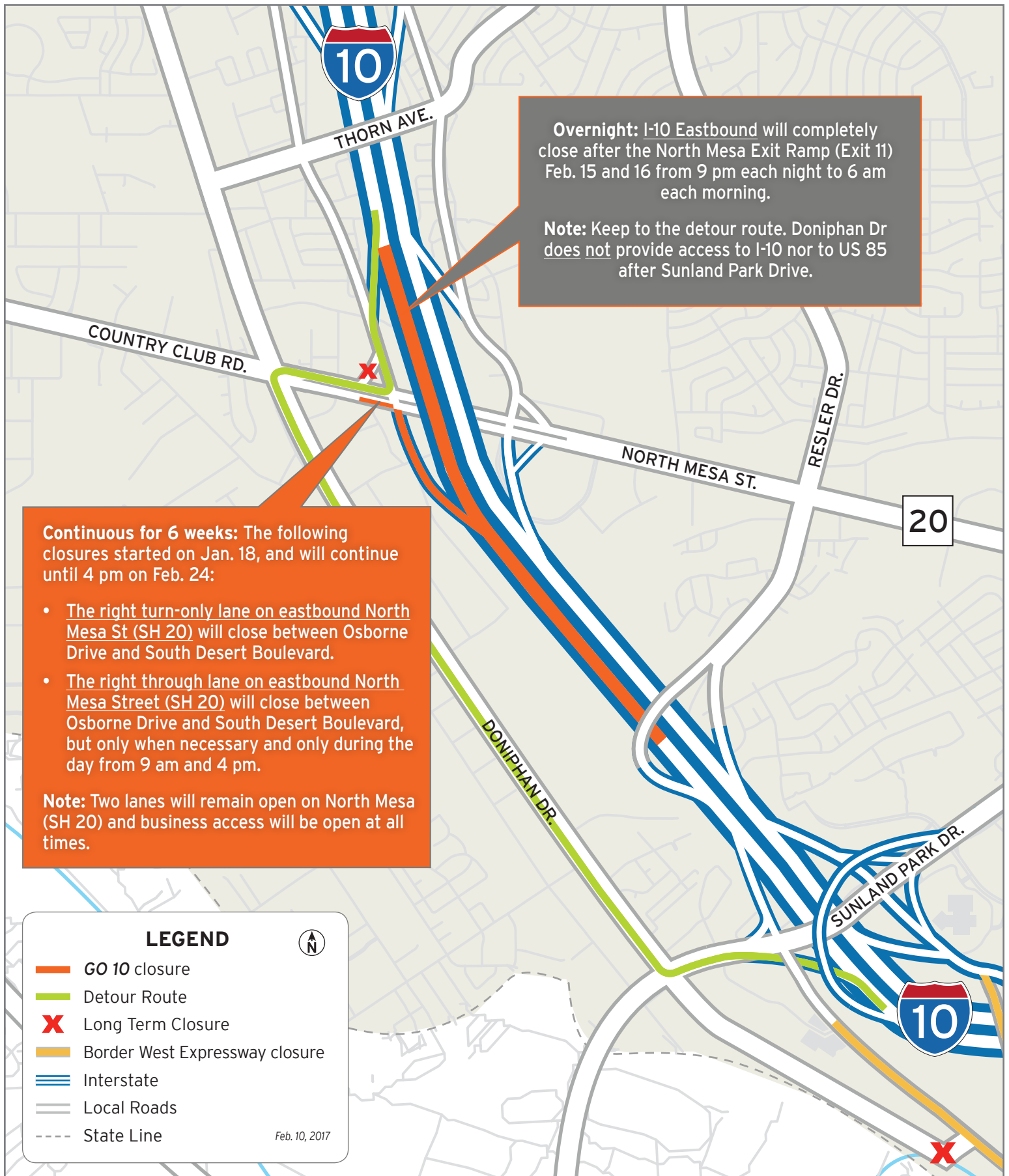
[www.go10elpaso.com](http://www.go10elpaso.com) | [facebook.com/go10elpaso](https://facebook.com/go10elpaso) | [twitter.com/go10ep](https://twitter.com/go10ep)



# I-10 East 1-night closure, Resler Ramp 5-night closure

Map 1 of 3






**Overnight:** I-10 Eastbound will completely close after the North Mesa Exit Ramp (Exit 11) Feb. 15 and 16 from 9 pm each night to 6 am each morning.




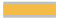



**Note:** Keep to the detour route. Doniphan Dr does not provide access to I-10 nor to US 85 after Sunland Park Drive.

**Continuous for 6 weeks:** The following closures started on Jan. 18, and will continue until 4 pm on Feb. 24:

- The right turn-only lane on eastbound North Mesa St (SH 20) will close between Osborne Drive and South Desert Boulevard.
- The right through lane on eastbound North Mesa Street (SH 20) will close between Osborne Drive and South Desert Boulevard, but only when necessary and only during the day from 9 am and 4 pm.

**Note:** Two lanes will remain open on North Mesa (SH 20) and business access will be open at all times.

**LEGEND** 

-  GO 10 closure
-  Detour Route
-  Long Term Closure
-  Border West Expressway closure
-  Interstate
-  Local Roads
-  State Line

Feb. 10, 2017



# Closures on I-10 and Mesa

Map 2 of 3





# I-10 West will close completely at Resler

Map 3 of 3

