



a TxDOT Project
For immediate release

NEWS RELEASE

EL PASO DISTRICT

Jennifer Wright
(915) 790-4340
Jennifer.Wright3@txdot.gov

March 8, 2019

The North Mesa entrance ramp to I-10 Westbound will close March 17.
The ramp will remain closed until further notice while crews build the new ramp.

Sunland Park

Daytime

Monday, March 11 through Thursday, March 14

9 a.m. to 5 p.m. each day

- The dedicated right turn lane at the signalized intersection of the Sunland Park eastbound exit ramp and Sunland Park Drive will be closed.

Crews will be installing permanent barrier at the dedicated right-turn lane. [No Map]

I-10 West at North Mesa

27 HOURS

Sunday, March 17 at 3 a.m. to Monday, March 18 at 6 a.m.

- I-10 Westbound will close at the North Mesa Street exit ramp (Exit 11). Detour: Motorists on I-10 Westbound will exit at North Mesa Street (Exit 11), follow the exit ramp through the signalized intersection and onto Desert Boulevard North, then follow Desert Boulevard North to the Redd Road. Motorists may use the Redd Road entrance ramp to I-10 Westbound.
- The North Mesa entrance ramp to I-10 Westbound will close and remained closed until further notice. Detour: Motorists may use the Redd Road entrance ramp to I-10 Westbound. Access to the Redd Road entrance ramp will be available via Desert Boulevard North.

This closure is necessary while crews move barrier and close the North Mesa Street entrance ramp to I-10 Westbound. The North Mesa westbound entrance ramp will stay closed until further notice. [Map 1]

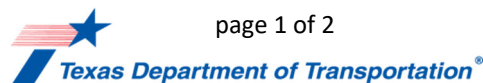
US 85 and Sunland Park

Daytime

Tuesday, March 19 and Wednesday, March 20

9 a.m. to 4 p.m. each day

- The US 85 direct connector ramp westbound, which leads to Sunland Park Drive, will close at McNutt Road.



page 1 of 2

The Texas Department of Transportation is responsible for maintaining 80,000 miles of road and for supporting aviation, rail, and public transportation across the state. GO 10 is a \$158 million reconstruction of Interstate 10 that spans approximately 6 miles on El Paso's West Side between Executive Center Boulevard and North Mesa Street. GO 10 features the addition of collector-distributor lanes and a new direct connector with Border West Expressway.

Maintain a Safe System • Address Congestion • Best-in-Class State Agency • Connect Texas Communities

An Equal Opportunity Employer

www.go10elpaso.com | facebook.com/go10elpaso | twitter.com/go10ep



a TxDOT Project
For immediate release

NEWS RELEASE

EL PASO DISTRICT

Jennifer Wright
(915) 790-4340
Jennifer.Wright3@txdot.gov

- The Sunland Park exit ramp from I-10 Westbound will be reduced to one lane. This closure is necessary while crews conduct pavement work in the area. [No Map]

The following closures are still developing, meaning details such as dates may change.

Sunland Park

27 HOURS

Saturday, March 23 at 3 a.m. to Sunday, March 24 at 6 a.m.

- The I-10 eastbound and westbound exit ramps and entrance ramps at Sunland Park will close.
- Sunland Park Drive will close between Constitution Drive to the mall traffic signal lights.
- Paisano Drive (US 85) will close at McNutt (NM 273).
- Paisano Drive (US 85) will close at Sunland Park Drive.
- Crockett Street access to Paisano Drive (US 85) will close.
- The Sunland Park flyover ramp will be open during this closure.
- The Resler flyover entrance ramp to I-10 Eastbound will close.

This closure is necessary so crews may setup permanent traffic signals. Crews will also be adjusting striping on Sunland Park Drive to permanent configuration. [No Map]

Note: The Texas turnaround lanes at the Sunland Park Drive overpass may or may not open as a result of this closure.

All closures are subject to change or cancellation.

All closure times are approximate.

Exit and entrance ramps may close up to one hour prior to the start time of an I-10 closure.

page 2 of 2

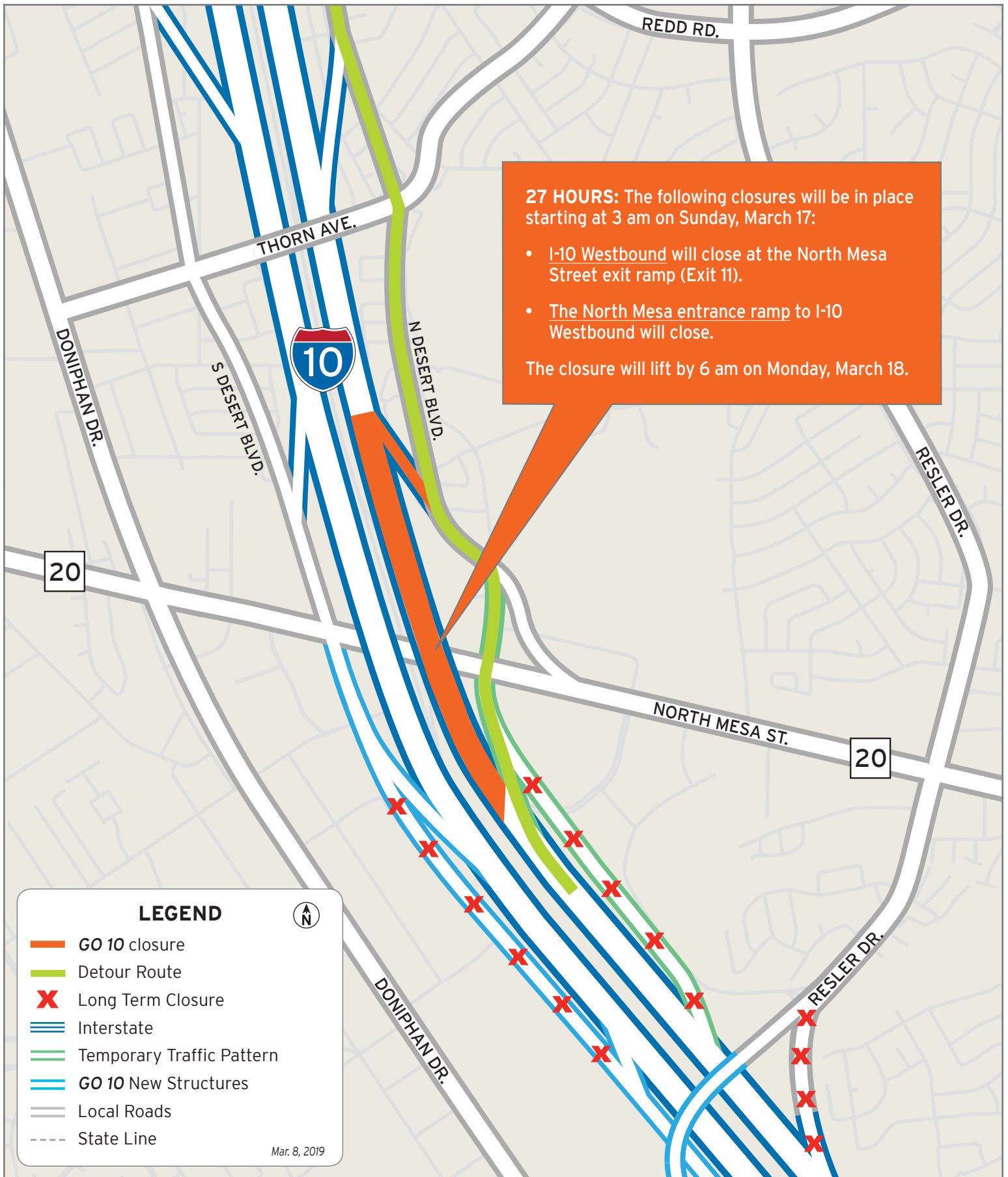


The Texas Department of Transportation is responsible for maintaining 80,000 miles of road and for supporting aviation, rail, and public transportation across the state. GO 10 is a \$158 million reconstruction of Interstate 10 that spans approximately 6 miles on El Paso's West Side between Executive Center Boulevard and North Mesa Street. GO 10 features the addition of collector-distributor lanes and a new direct connector with Border West Expressway.

Maintain a Safe System • Address Congestion • Best-in-Class State Agency • Connect Texas Communities

An Equal Opportunity Employer

www.go10elpaso.com | facebook.com/go10elpaso | twitter.com/go10ep



I-10 West to close at Mesa

Map 1 of 1

