



NEWS RELEASE

EL PASO DISTRICT

Jennifer Wright

(915) 790-4340

Jennifer.Wright3@txdot.gov

a **TxDOT Project**

For immediate release

July 7, 2017

I-10 West and Sunland Park Drive southbound will close July 13 at night.

Detour onto North Mesa will be required.

Executive @ I-10

One Day

Monday, July 10

9 a.m. to 4 p.m.

- The right lane on Executive Center Boulevard between I-10 and Rio Bravo Street (in the direction headed toward North Mesa Street) will be closed.

The El Paso Electric Company will be servicing a powerline. [No Map]

Mesa @ I-10

Five Days

Monday, July 10 through Friday, July 14

9 a.m. to 4 p.m. daily

- The right lane on North Mesa Street (SH 20, eastbound) – in the direction headed toward the mountain – will be closed between South Desert Boulevard and North Desert Boulevard.

Crews will be working on columns for the all-new I-10 East Overpass. [Map 1]

I-10 & Sunland

One Night

Tuesday, July 11

9 p.m. to 6 a.m.

- I-10 in both directions will **completely** close at the Sunland Park Exits (Exit 13).

Detour: Traffic in both directions will be able to exit and re-enter I-10 at the next entrance ramp.

Crews will be placing deck panels onto the new turnaround bridges at the Sunland Park Overpass. [Map 2]

Two Nights

Wednesday, July 12 and Thursday, July 13

9 p.m. each night to 6 a.m. each morning

- I-10 Westbound will **completely** close at the Sunland Park Exit (Exit 13).

Detour for July 12: Traffic will exit at Sunland Park (Exit 13) and re-enter at the Sunland Park Entrance Ramp.

Detour for July 13: Because the westbound Sunland Park Entrance Ramp will be closed on July 13, traffic will exit at Sunland Park (Exit 13), take Sunland Park Drive to North Mesa Street (SH

page 1 of 2



The Texas Department of Transportation is responsible for maintaining 80,000 miles of road and for supporting aviation, rail, and public transportation across the state. GO 10 is a \$158 million reconstruction of Interstate 10 that spans approximately 6 miles on El Paso's West Side between Executive Center Boulevard and North Mesa Street. GO 10 features the addition of collector-distributor lanes and a new direct connector with Border West Expressway.

Maintain a Safe System • Address Congestion • Best-in-Class State Agency • Connect Texas Communities

An Equal Opportunity Employer

www.go10elpaso.com | facebook.com/go10elpaso | twitter.com/go10ep



a TxDOT Project
For immediate release

NEWS RELEASE

EL PASO DISTRICT

Jennifer Wright
(915) 790-4340
Jennifer.Wright3@txdot.gov

20), then take North Mesa Street to the I-10 interchange where vehicles may re-enter I-10 West.

Crews will erect steel beams for the new Sunland Park Flyover Ramp to I-10 East. [Map 3 & 4]

One Night



Thursday, July 13

9 p.m. to 6 a.m. the following morning

- Sunland Park Drive (southbound lanes) will **completely** close between Mesa Hills Drive and Machuca Road.
- I-10 Westbound Entrance Ramp will be closed at Sunland Park.

Detour: Drivers who wish to take Sunland Park Drive southbound toward I-10 will be detoured at Mesa Hills Drive and re-directed to North Mesa Street (SH 20). Drivers will then take North Mesa Street to Doniphan Drive and take Doniphan Drive to Sunland Park Drive.

Crews will erect steel beams for the new Sunland Park Flyover Ramp to I-10 East. [Map 4]

Two-Week Look Ahead

Closures below continue to develop. Details such as dates could change; however, in an effort to provide information as far in advance as possible, we offer the following still-developing information:

One Night

Monday, July 17

9 p.m. to 6 a.m. the following morning

- The I-10 Westbound Entrance Ramp from Sunland Park will close.

One Night

Thursday, July 20

9 p.m. to 6 a.m. the following morning

- I-10 in both directions will completely close at Sunland Park.

All closure start times and end times are approximate.
All closures are subject to change.

page 2 of 2

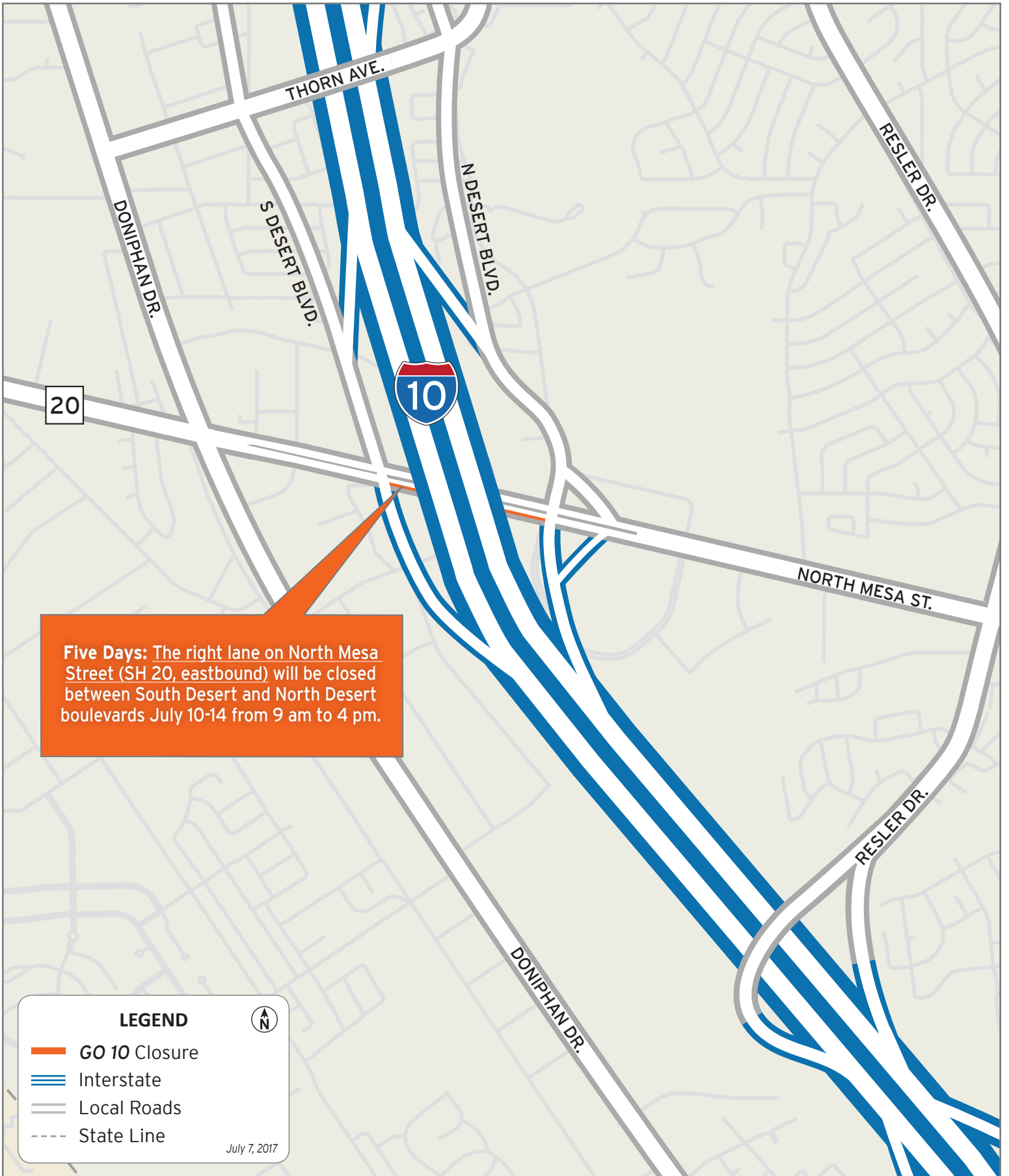


The Texas Department of Transportation is responsible for maintaining 80,000 miles of road and for supporting aviation, rail, and public transportation across the state. GO 10 is a \$158 million reconstruction of Interstate 10 that spans approximately 6 miles on El Paso's West Side between Executive Center Boulevard and North Mesa Street. GO 10 features the addition of collector-distributor lanes and a new direct connector with Border West Expressway.

Maintain a Safe System • Address Congestion • Best-in-Class State Agency • Connect Texas Communities

An Equal Opportunity Employer

www.go10elpaso.com | facebook.com/go10elpaso | twitter.com/go10ep



LEGEND 

-  GO 10 Closure
-  Interstate
-  Local Roads
-  State Line

July 7, 2017



Lane closed on North Mesa Street

Map 1 of 4

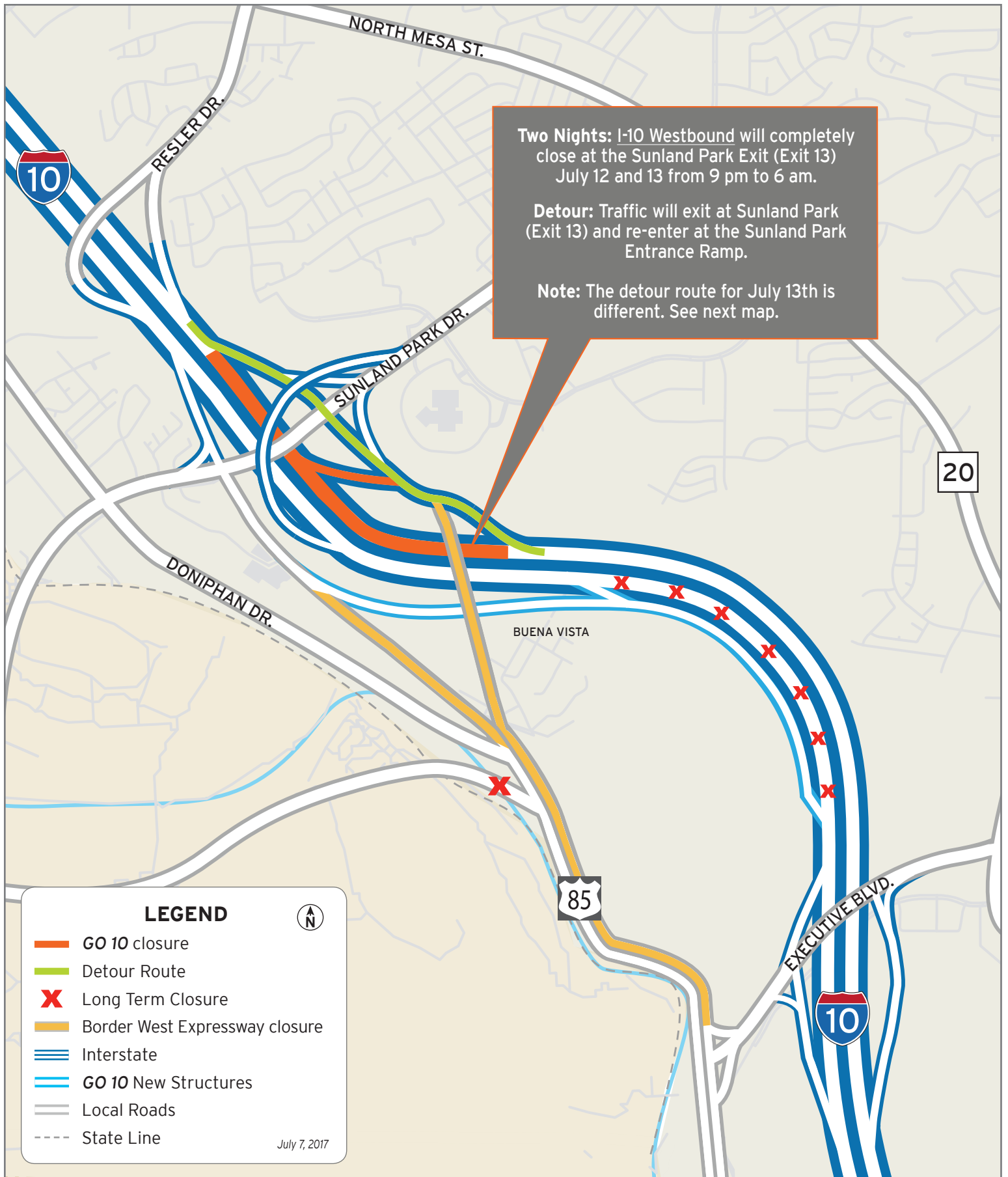




Full Closure of I-10 at Sunland

Map 2 of 4

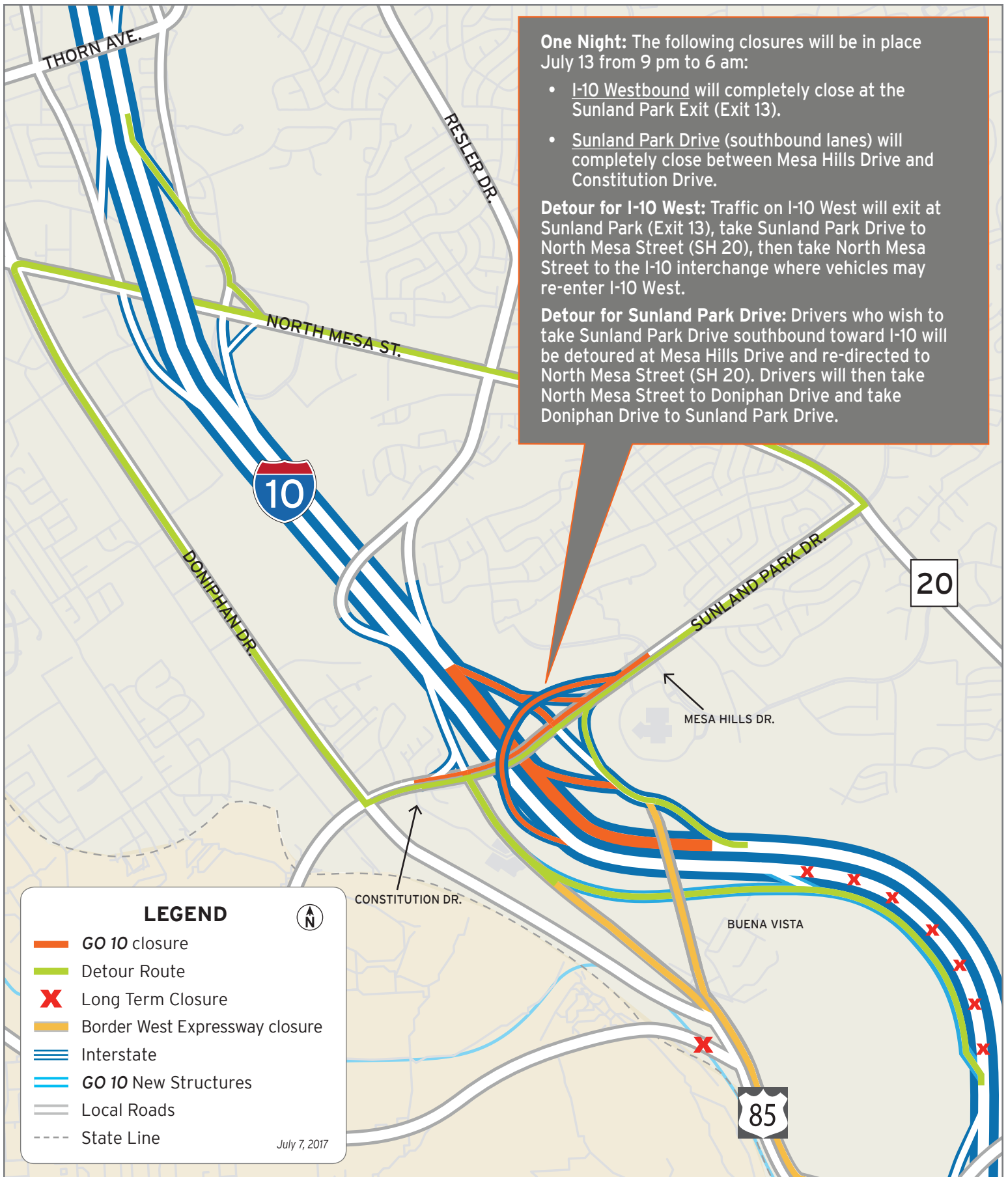




I-10 West closes at Sunland

Map 3 of 4





Full closures at Sunland

Map 4 of 4

