



a TxDOT Project
For immediate release

NEWS RELEASE

EL PASO DISTRICT

Jennifer Wright
(915) 790-4340
Jennifer.Wright3@txdot.gov

April 7, 2017

US 85 bridge columns take shape & Sunland Interchange continues to evolve

Later this month, I-10 East and North Mesa will close completely for two nights

I-10 & Sunland

Overnight

Sunday, April 9 through Thursday, April 13

9 p.m. each night to 6 a.m. each morning

- The Sunland Park Flyover Entrance Ramp to I-10 Eastbound will close.

Crews are conducting prep work for the eventual removal of the Sunland Park Flyover Ramp. [Map 1]

Overnight

Sunday, April 9 and Thursday, April 13

9 p.m. each night to 6 a.m. each morning

- I-10 East will be reduced to one lane between North Mesa St. and Buena Vista.

Crews are conducting prep work for the eventual removal of the Sunland Park Flyover Ramp. Crews will also be boring across the interstate. [No Map]

Overnight

Tuesday, April 11 and Wednesday, April 12

9 p.m. each night to 6 a.m. each morning

- I-10 West will be reduced to one lane between Buena Vista and Sunland Park Dr.

Crews are conducting structural work. [No Map]

Daytime

Monday, April 10 through Friday, April 14

9 a.m. to 4 p.m. each day

- The two-lane Sunland Park Exit Ramp (Exit 13, Westbound) will reduce to one lane.

This closure is necessary to give crews access to the work site. [No Map]

Daytime

Monday, April 10 through Friday, April 14

9 a.m. to 4 p.m. each day

- The left lane on I-10 Eastbound will close between Sunland Park and Buena Vista.

Crews are constructing new US 85 bridge columns in the area. Thank you for your patience. [Map 1]

page 1 of 2



The Texas Department of Transportation is responsible for maintaining 80,000 miles of road and for supporting aviation, rail, and public transportation across the state. GO 10 is a \$158 million reconstruction of Interstate 10 that spans approximately 6 miles on El Paso's West Side between Executive Center Boulevard and North Mesa Street. GO 10 features the addition of collector-distributor lanes and a new direct connector with Border West Expressway.

Maintain a Safe System • Address Congestion • Best-in-Class State Agency • Connect Texas Communities

An Equal Opportunity Employer

www.go10elpaso.com | facebook.com/go10elpaso | twitter.com/go10ep



NEWS RELEASE

EL PASO DISTRICT

Jennifer Wright

(915) 790-4340

Jennifer.Wright3@txdot.gov

a TxDOT Project

For immediate release

Overnight



Tuesday, April 18 and Wednesday, April 19

9 p.m. each night to 6 a.m. each morning

- I-10 Westbound will be reduced to one lane between Buena Vista and Sunland Park.

Crews will re-stripe I-10 West to accommodate construction of US 85 bridge columns in the area. Drivers should stay alert considering these lane adjustments. [No Map]

I-10 & Mesa

Overnight

Monday, April 17 through Thursday, April 20

9 p.m. each night to 6 a.m. each morning

- North Mesa St. (SH 20) in both directions will close completely at the I-10 Overpass.
- I-10 Eastbound entrance ramps and exit ramps for North Mesa St. (Exit 11) will close.
- South Desert Blvd. frontage road will close between Thorn Ave. and North Mesa St.

Detour: Vehicles will exit at Redd Rd. (Exit 9), take Redd Rd. to Doniphan Dr. (SH 20), and take Doniphan Dr. (SH 20) to Sunland Park Dr. Drivers can re-enter I-10 East from Sunland Park Dr.

These closures are necessary while crews haul dirt. [Map 2]

All closure start times and end times are approximate.

All closures are subject to change.

The latest information may be found on the traffic alerts page at go10elpaso.com.

page 2 of 2

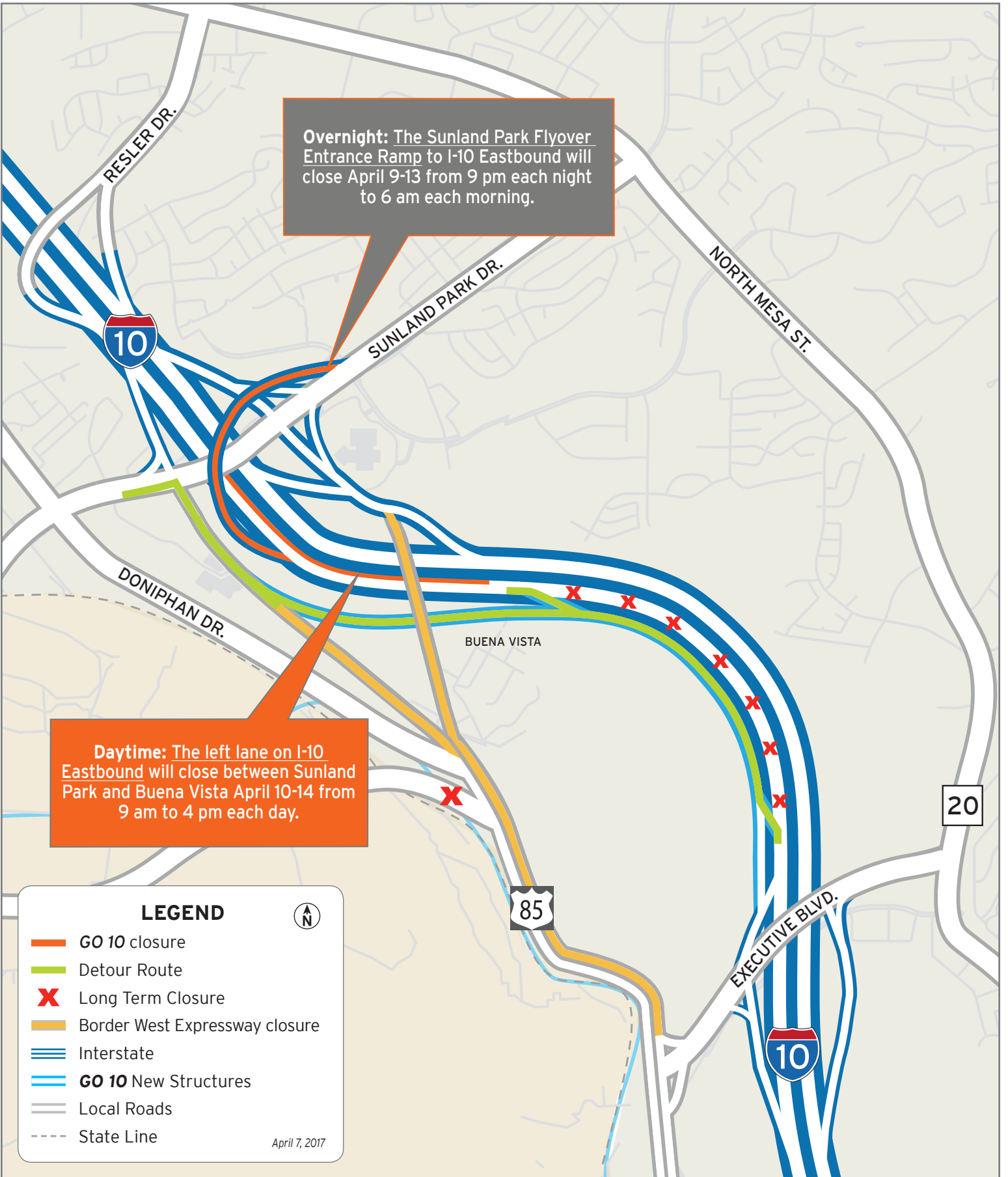


The Texas Department of Transportation is responsible for maintaining 80,000 miles of road and for supporting aviation, rail, and public transportation across the state. GO 10 is a \$158 million reconstruction of Interstate 10 that spans approximately 6 miles on El Paso's West Side between Executive Center Boulevard and North Mesa Street. GO 10 features the addition of collector-distributor lanes and a new direct connector with Border West Expressway.

Maintain a Safe System • Address Congestion • Best-in-Class State Agency • Connect Texas Communities

An Equal Opportunity Employer

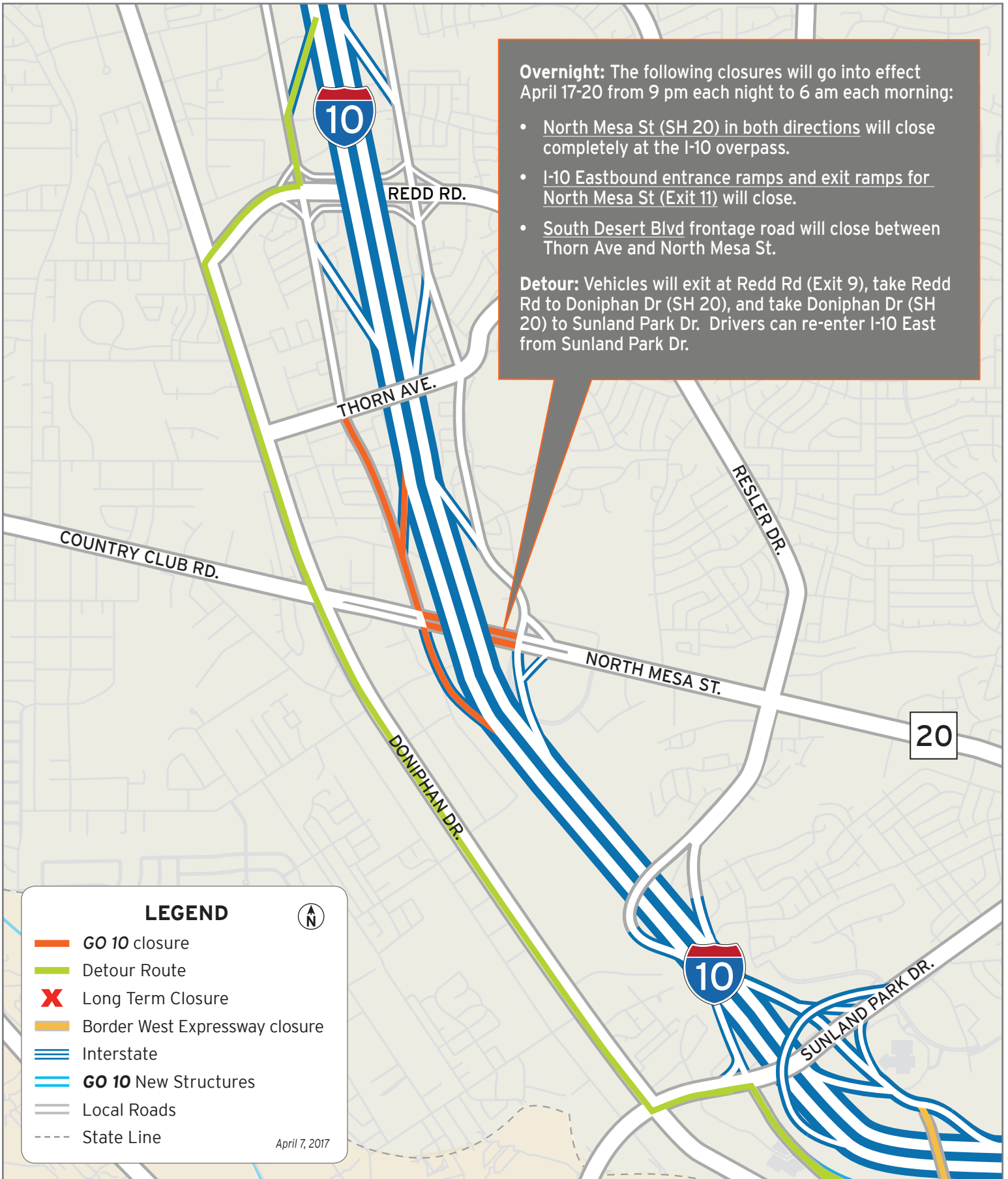
www.go10elpaso.com | facebook.com/go10elpaso | twitter.com/go10ep



Closures on I-10 and Sunland

Map 1 of 2





Closures on I-10 and Mesa

Map 2 of 2

