



NEWS RELEASE

EL PASO DISTRICT

Jennifer Wright

(915) 790-4340

Jennifer.Wright3@txdot.gov

a TxDOT Project

For immediate release

October 6, 2017

I-10 closures are set for the nights of Wednesday and Thursday. 27-hour closures of I-10 are coming.

I-10 East @ Mesa

Overnight

Wednesday, Oct. 11

9 p.m. to 6 a.m. the next morning

- I-10 Eastbound will close **completely** between the Redd Road Exit (Exit 9) and Resler Drive.
- North Mesa Street (SH 20) in both directions will close **completely** under the I-10 Overpass.
- South Desert Boulevard will close at Thorn Avenue.
- The North Mesa Entrance Ramp to I-10 Eastbound will close.

Detour: Traffic on I-10 East will exit at Redd Road (Exit 9), take Redd Road to Doniphan Drive, then take Doniphan Drive to Sunland Park Drive. Traffic may re-enter I-10 East at the Sunland Park Entrance Ramp. Traffic on North Mesa Street (SH 20) should follow the detour signs in place.

Crews are building the all-new I-10 Eastbound Overpass. [Map 1]

Daytime

Thursday, Oct. 12

5 a.m. to 4 p.m.

- The right lane on North Mesa Street (SH 20) will close – in direction traveling toward Doniphan Drive – between North Desert Boulevard and Osborne Drive.

Crews are building the I-10 Eastbound Overpass. [No Map]

I-10 @ Sunland

Overnight

Thursday, Oct. 12

9 p.m. to 6 a.m. the next morning

- I-10 in both directions will close **completely** at the Sunland Park Exit (Exit 13).
- The Sunland Park Drive Overpass will close **completely** in both directions.
- The Sunland Park Flyover Entrance Ramp to I-10 Eastbound will close.

Detour: I-10 traffic will be able to exit at Sunland Park (Exit 13) and immediately re-enter I-10 at the next entrance ramp. Traffic on Sunland Park Drive should follow the detour signs in place.

Crews are building the all-new Sunland Park Flyover Ramp. [Map 2]

All closures are subject to change.

Closure times are approximate. Ramps may close up to one hour prior to the start time of an I-10 highway closure.



page 1 of 4

The Texas Department of Transportation is responsible for maintaining 80,000 miles of road and for supporting aviation, rail, and public transportation across the state. GO 10 is a \$158 million reconstruction of Interstate 10 that spans approximately 6 miles on El Paso's West Side between Executive Center Boulevard and North Mesa Street. GO 10 features the addition of collector-distributor lanes and a new direct connector with Border West Expressway.

Maintain a Safe System • Address Congestion • Best-in-Class State Agency • Connect Texas Communities

An Equal Opportunity Employer

www.go10elpaso.com | facebook.com/go10elpaso | twitter.com/go10ep



a TxDOT Project
For immediate release

NEWS RELEASE

EL PASO DISTRICT

Jennifer Wright
(915) 790-4340
Jennifer.Wright3@txdot.gov

CLOSURE FORECAST

The following closures are tentative. Details such as dates and closure limits could change.

Overnight

Monday, Oct. 16 through Thursday, Oct. 19
9 p.m. each night to 6 a.m. each morning

- North Mesa Street (SH 20) will close in both directions under the I-10 Overpass.

Overnight

Monday, Oct. 16 through Wednesday, Oct. 18
9 p.m. each night to 6 a.m. each morning

- The left lane on I-10 Eastbound will close between Executive and Asarco.
- The shoulder on I-10 Westbound will be closed between Asarco and Executive.

Overnight

Wednesday, Oct. 18; and Tuesday, Oct. 24 through Thursday, Oct. 26
9 p.m. each night to 6 a.m. each morning

- The Sunland Park Entrance Ramp to I-10 Eastbound (in front of the Shamaley dealership) will close. Access to the ramp from Crockett Street will be open.

27 HOURS

Sunday, Oct. 29

3 a.m. to 6 a.m. the next morning

- I-10 Eastbound will close completely at North Mesa Street.
- The left lane on I-10 Westbound will close at Sunland Park.
- The Resler Flyover Entrance Ramp to I-10 Eastbound will close.

Crews are planning to demolish half of the old Resler Flyover Ramp. Traffic will be driving on the all-new Resler Flyover Ramp by the morning of Oct. 30.

27 HOURS

Sunday, Nov. 5

3 a.m. to 6 a.m. the next morning

- I-10 Westbound will close completely at the Resler Exit Ramp.
- The left on I-10 Eastbound will close at Sunland Park.
- The Resler Flyover Entrance Ramp to I-10 Eastbound will close.

Crews plan to finish demolishing the remaining half of the old Resler Flyover Ramp.



page 2 of 3

The Texas Department of Transportation is responsible for maintaining 80,000 miles of road and for supporting aviation, rail, and public transportation across the state. GO 10 is a \$158 million reconstruction of Interstate 10 that spans approximately 6 miles on El Paso's West Side between Executive Center Boulevard and North Mesa Street. GO 10 features the addition of collector-distributor lanes and a new direct connector with Border West Expressway.

Maintain a Safe System • Address Congestion • Best-in-Class State Agency • Connect Texas Communities

An Equal Opportunity Employer

www.go10elpaso.com | facebook.com/go10elpaso | twitter.com/go10ep



a TxDOT Project
For immediate release

NEWS RELEASE

EL PASO DISTRICT

Jennifer Wright
(915) 790-4340
Jennifer.Wright3@txdot.gov

27 HOURS

Sunday, November – date(s) to be determined
3 a.m. to 6 a.m. the next morning

- I-10 Eastbound will close completely at Redd Road (Exit 9).
 - North Mesa Street (SH 20) will close in both direction under the I-10 Overpass.
- Crews will be pouring bridge deck for the new I-10 Eastbound Overpass at North Mesa.

ALL CLOSURES ARE SUBJECT TO CHANGE.

All closure times are approximate.

Ramps may close up to one hour prior to the start time of an I-10 highway closure.

page 3 of 3



The Texas Department of Transportation is responsible for maintaining 80,000 miles of road and for supporting aviation, rail, and public transportation across the state. GO 10 is a \$158 million reconstruction of Interstate 10 that spans approximately 6 miles on El Paso's West Side between Executive Center Boulevard and North Mesa Street. GO 10 features the addition of collector-distributor lanes and a new direct connector with Border West Expressway.

Maintain a Safe System • Address Congestion • Best-in-Class State Agency • Connect Texas Communities

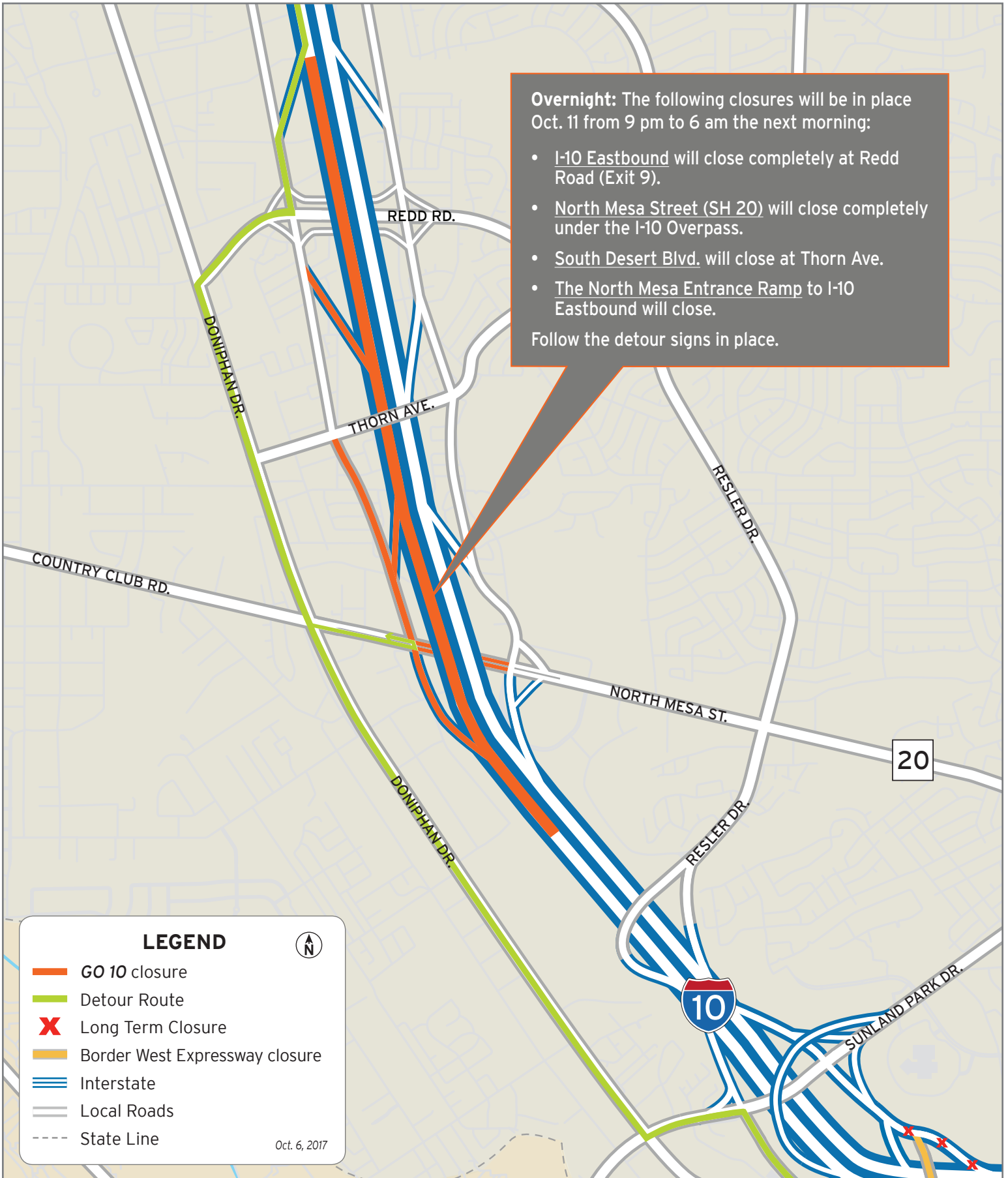
An Equal Opportunity Employer

www.go10elpaso.com | facebook.com/go10elpaso | twitter.com/go10ep

Overnight: The following closures will be in place Oct. 11 from 9 pm to 6 am the next morning:

- I-10 Eastbound will close completely at Redd Road (Exit 9).
- North Mesa Street (SH 20) will close completely under the I-10 Overpass.
- South Desert Blvd. will close at Thorn Ave.
- The North Mesa Entrance Ramp to I-10 Eastbound will close.

Follow the detour signs in place.



LEGEND

- GO 10 closure
- Detour Route
- ✗ Long Term Closure
- Border West Expressway closure
- Interstate
- Local Roads
- - - State Line

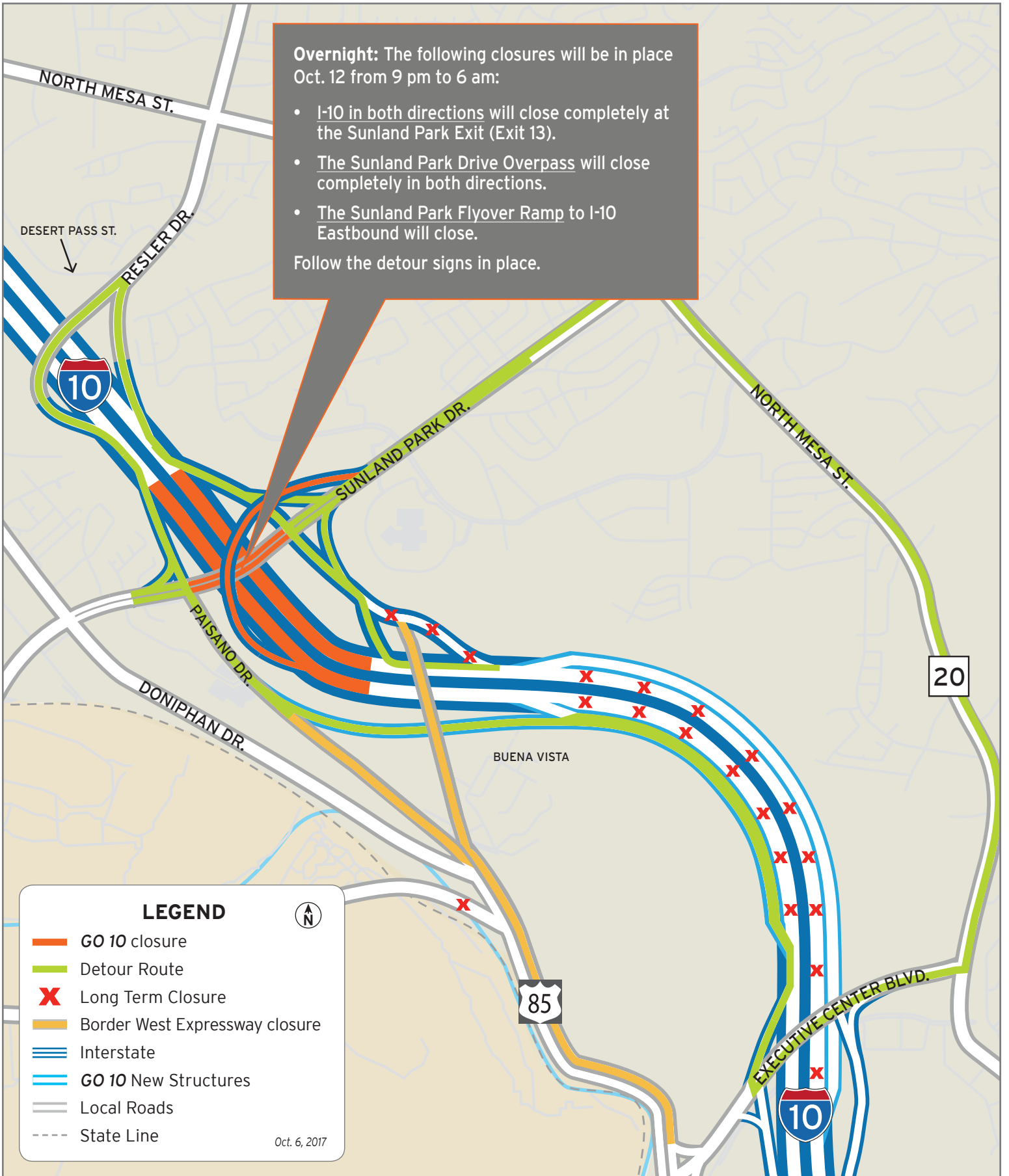
Oct. 6, 2017



Crews are building the all-new I-10 East Overpass at North Mesa

Map 1 of 2





Crews are building the all-new Sunland Flyover Ramp

Map 2 of 2

