



a TxDOT Project
For immediate release

NEWS RELEASE

EL PASO DISTRICT

Jennifer Wright
(915) 790-4340
Jennifer.Wright3@txdot.gov

October 5, 2018

27-hour closure of North Mesa is set for October 21.

I-10 Both Directions

Overnight

Sunday, October 7 through Thursday, October 11

8 p.m. each night to 6 a.m. each morning

- I-10 Eastbound will close at Sunland Park (Exit 13). Detour: Motorists will exit at Sunland Park, follow the detour signs to Doniphan Drive and Paisano Drive (US 85), then onto Executive Center Boulevard. The Executive Center Boulevard entrance ramp to I-10 Eastbound will be open.
- I-10 Westbound will close at Executive Center (Exit 16). Detour: Motorists will exit at Executive Center, then follow the detour signs to North Mesa Street (SH 20). The North Mesa entrance ramp to I-10 Westbound will be open.
- Sunland Park Drive will close in both directions at the I-10 overpass. Detour: Motorists should use an alternate route.
- The direct connector ramps between I-10 and Paisano Drive (US 85) will close. Detour: Motorists on westbound Paisano Drive (US 85) will exit at McNutt Road (NM 273).
- Both Sunland Park entrance ramps to I-10 Eastbound will close.
- Crockett Street access to Paisano Drive (US 85) will close.
- The Resler flyover entrance ramp to I-10 Eastbound will close.
- The Sunland Park entrance ramp to I-10 Westbound will close.
- The Schuster/UTEP entrance ramp to I-10 Westbound will close.

Crews will be paving at Sunland Park Drive and painting structures. [Map 1]

North Mesa

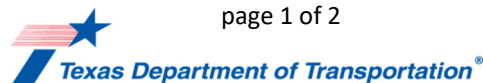
Overnight

Sunday, October 7

9 p.m. to midnight (three hours)

- The right lane on North Mesa Street (westbound, in the direction headed toward Doniphan Drive) will close between Bartlett Drive and North Desert Boulevard.

Crews will be moving barrier, and temporarily changing the way drivers access nearby businesses. The change will be in place for approximately 1-2 weeks. The change will allow crews to finish pavement work. [No Map]



page 1 of 2

The Texas Department of Transportation is responsible for maintaining 80,000 miles of road and for supporting aviation, rail, and public transportation across the state. GO 10 is a \$158 million reconstruction of Interstate 10 that spans approximately 6 miles on El Paso's West Side between Executive Center Boulevard and North Mesa Street. GO 10 features the addition of collector-distributor lanes and a new direct connector with Border West Expressway.

Maintain a Safe System • Address Congestion • Best-in-Class State Agency • Connect Texas Communities

An Equal Opportunity Employer

www.go10elpaso.com | facebook.com/go10elpaso | twitter.com/go10ep



NEWS RELEASE

EL PASO DISTRICT

Jennifer Wright

(915) 790-4340

Jennifer.Wright3@txdot.gov

a TxDOT Project

For immediate release

Overnight

Monday, October 8 through Thursday, October 11

8 p.m. each night to 6 a.m. each morning

- The North Mesa exit ramp (Exit 11) from I-10 Eastbound will close. Detour: Motorists on I-10 Eastbound should use an alternate exit ramp.
- South Desert Boulevard will close between McClintock Drive and North Mesa Street (SH 20).
- North Mesa Street (SH 20) westbound lanes (in the direction headed toward Doniphan Drive) will close at North Desert Boulevard. Detour: Motorists on westbound North Mesa Street (SH 20) should take an alternate route. Crews will be conducting pavement work on North Mesa Street near South Desert Boulevard. [Map 1]

Advance Notice

The following closures are still developing. Details, such as dates, may change.

North Mesa

27 HOURS

Sunday, October 21 at 3 a.m. to Monday, October 22 at 6 a.m.

- North Mesa Street (SH 20) will close completely in both directions between Remcon Circle and Osborne Drive. Detour: Motorists should use an alternate route such as Sunland Park Drive or Redd Road.
- All North Mesa entrance ramps and exit ramps (Exit 11) at I-10 will close. Detour: Motorists should use alternate ramps at Redd Road or Sunland Park Drive.
- McClintock Drive access to South Desert Boulevard will close.
- South Desert Boulevard will close between McClintock Drive and North Mesa Street (SH 20).

Crews will be moving barrier walls and re-striping lanes.

IMPORTANT: After the closure lifts, motorists on North Mesa Street (SH 20) at the I-10 overpass will experience a change in traffic lane patterns. Motorists should plan for extra travel time and approach the area cautiously. [Traffic Alert Map]

All closures are subject to change.

All closure times are approximate.

Exit and entrance ramps may close up to one hour prior to the start time of an I-10 closure.

page 2 of 2

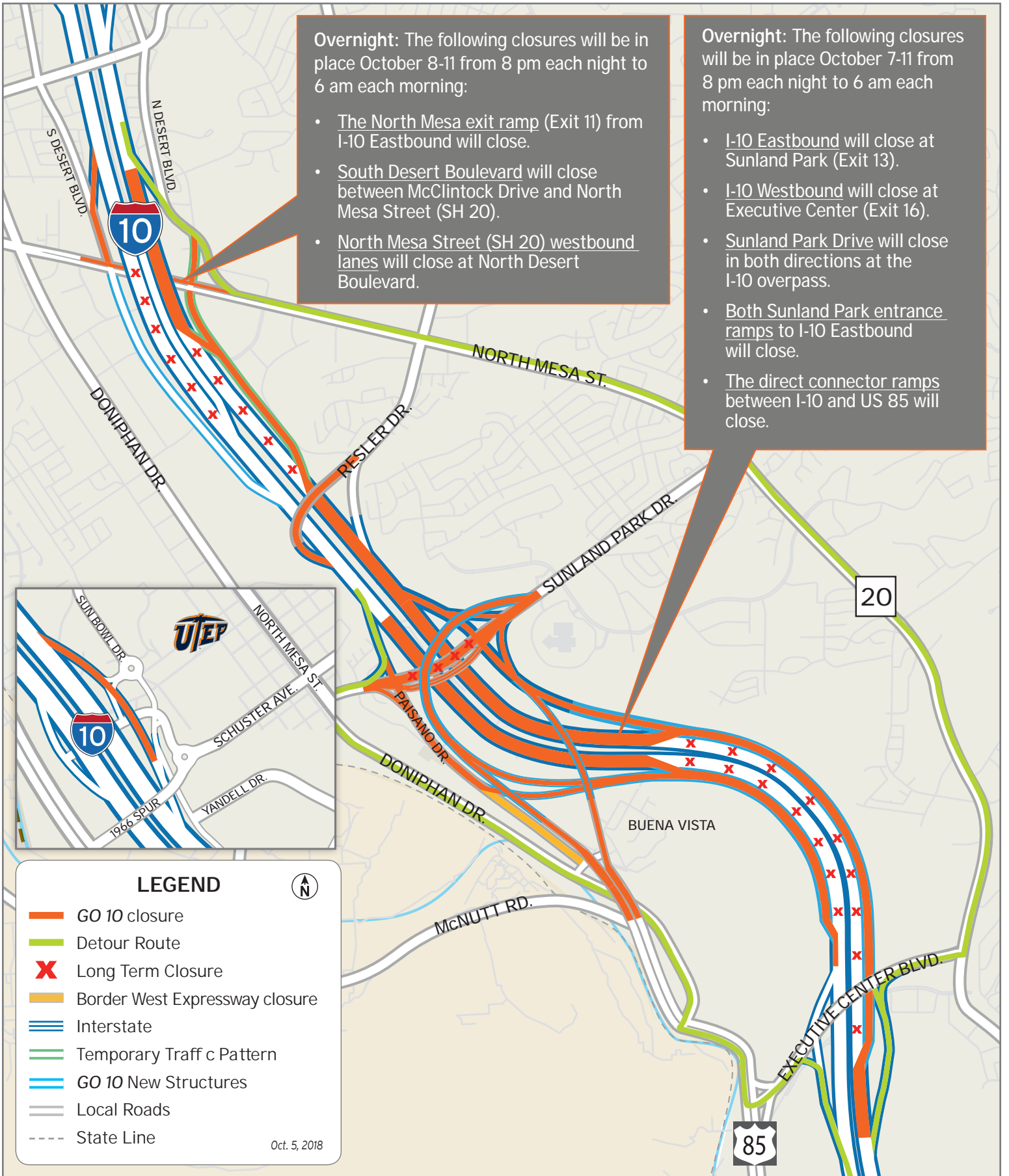


The Texas Department of Transportation is responsible for maintaining 80,000 miles of road and for supporting aviation, rail, and public transportation across the state. GO 10 is a \$158 million reconstruction of Interstate 10 that spans approximately 6 miles on El Paso's West Side between Executive Center Boulevard and North Mesa Street. GO 10 features the addition of collector-distributor lanes and a new direct connector with Border West Expressway.

Maintain a Safe System • Address Congestion • Best-in-Class State Agency • Connect Texas Communities

An Equal Opportunity Employer

www.go10elpaso.com | facebook.com/go10elpaso | twitter.com/go10ep



I-10 closes in both directions

Map 1 of 1

