



NEWS RELEASE

EL PASO DISTRICT

Jennifer Wright

(915) 790-4340

Jennifer.Wright3@txdot.gov

a TxDOT Project

For immediate release

Nov. 3, 2017

27-hour closures set for next two Sundays, Nov. 5 and 12. At night, expect various closures of I-10 as crews work to complete more overpasses.

I-10 East @ Mesa



27 Hours

Sunday, Nov. 5

3 a.m. to 6 a.m. the next morning

- I-10 Eastbound will close completely between North Mesa Street (SH 20) and Sunland Park Drive.
- The North Mesa Street Entrance Ramp to I-10 Eastbound will close.
- The left lane on I-10 Westbound will close between Sunland Park Drive and North Mesa Street (SH 20).
- The Resler Flyover Entrance Ramp to I-10 Eastbound will close.

Detour: Motorists on I-10 Eastbound will exit at North Mesa Street (Exit 11) and may re-enter I-10 Eastbound from Sunland Park Drive. Follow the detour signs.

Crews plan to finish demolishing the remaining half of the old Resler Flyover Ramp. [Map 1]

Overnight

Monday, Nov. 6

9 p.m. to 6 a.m. the following morning

- The right lane on I-10 Eastbound will close between North Mesa Street and Sunland Park Drive.

Crews will be conducting final work to remove the old Resler Flyover Eastbound Ramp. [No Map]

Overnight

Tuesday, Nov. 7 and Thursday, Nov. 9

9 p.m. each night to 6 a.m. each following morning

- I-10 Eastbound will reduce to one lane at North Mesa Street (SH 20).
- The North Mesa Street (SH 20) Exit Ramp (Exit 11) from I-10 Eastbound will close.

Detour: Motorists who want to exit I-10 Eastbound at North Mesa Street (SH 20) should use the prior exit at Redd Road (Exit 9), then use South Desert Boulevard to arrive at North Mesa Street (SH 20). Follow the detour signs.

Crews will be placing bridge deck at the I-10/North Mesa interchange. [Map 2]

I-10 East @ Sunland

Overnight

Tuesday, Nov. 7 and Wednesday, Nov. 8



page 1 of 4

The Texas Department of Transportation is responsible for maintaining 80,000 miles of road and for supporting aviation, rail, and public transportation across the state. GO 10 is a \$158 million reconstruction of Interstate 10 that spans approximately 6 miles on El Paso's West Side between Executive Center Boulevard and North Mesa Street. GO 10 features the addition of collector-distributor lanes and a new direct connector with Border West Expressway.

Maintain a Safe System • Address Congestion • Best-in-Class State Agency • Connect Texas Communities

An Equal Opportunity Employer

www.go10elpaso.com | facebook.com/go10elpaso | twitter.com/go10ep



NEWS RELEASE

EL PASO DISTRICT

Jennifer Wright

(915) 790-4340

Jennifer.Wright3@txdot.gov

a TxDOT Project

For immediate release

8 p.m. each night to 6 a.m. each following morning

- I-10 Eastbound will close between the Sunland Park Exit (Exit 13) and the Sunland Park Entrance Ramp.
- The Sunland Park Flyover Entrance Ramp to I-10 Eastbound will close.
- I-10 Westbound will close between the Executive Center Exit (Exit 16) and Sunland Park Drive.

Detours: Motorists on I-10 Eastbound will exit at Sunland Park Drive (Exit 13) and may re-enter I-10 immediately at the next entrance ramp. Motorists on I-10 Westbound will exit at Executive Center Boulevard (Exit 16) and use North Mesa Street (SH 20) to get to Sunland Park Drive. Motorists may re-enter I-10 West from Sunland Park Drive. Follow the detour signs.

Crews will set beams over I-10 for the second westbound Paisano Drive (US 85) Overpass. [Map 2]

Resler

Daytime

Wednesday, Nov. 8 and Thursday, Nov. 9

9 a.m. to 4 p.m. daily

- The Resler Exit Ramp from I-10 Westbound will close.

Crews will be working on illumination poles. [No Map]

I-10 West @ Executive

Overnight

Thursday, Nov. 9

9 p.m. to 6 a.m. the next morning

- I-10 Westbound will close between Executive Center Boulevard (Exit 16) and Sunland Park Drive.

Detour: Motorists will exit at the Executive Center Exit (Exit 16) and use North Mesa Street (SH 20) to get to Sunland Park Drive. Motorists may re-enter I-10 Westbound from Sunland Park Drive. Follow the detour signs.

Crews will set beams over I-10 for the second westbound Paisano Drive (US 85) Overpass. [Map 3]

I-10 East @ Mesa

27 Hours

Sunday, Nov. 12

3 a.m. to 6 a.m. the next morning

- I-10 Eastbound will close completely between the North Mesa Exit (Exit 11) and the North Mesa Entrance Ramp.
- North Mesa Street (SH 20) will close in both directions under the I-10 Overpass. This closure may open sooner than 6 a.m. Nov. 13.



page 2 of 4

The Texas Department of Transportation is responsible for maintaining 80,000 miles of road and for supporting aviation, rail, and public transportation across the state. GO 10 is a \$158 million reconstruction of Interstate 10 that spans approximately 6 miles on El Paso's West Side between Executive Center Boulevard and North Mesa Street. GO 10 features the addition of collector-distributor lanes and a new direct connector with Border West Expressway.

Maintain a Safe System • Address Congestion • Best-in-Class State Agency • Connect Texas Communities

An Equal Opportunity Employer

www.go10elpaso.com | facebook.com/go10elpaso | twitter.com/go10ep



NEWS RELEASE

EL PASO DISTRICT

Jennifer Wright

(915) 790-4340

Jennifer.Wright3@txdot.gov

a TxDOT Project

For immediate release

- The North Mesa Entrance Ramp to I-10 Eastbound will close. This closure may open sooner than 6 a.m. Nov. 13.

Detour: Motorists will exit at North Mesa Street (SH 20), go to Doniphan Drive, take Doniphan Drive to Sunland Park Drive, then re-enter I-10 Eastbound at the Sunland Park Entrance Ramp.

This closure is necessary while crews pour bridge deck onto the new I-10 Eastbound Overpass at North Mesa Street. Much of this closure will be necessary to allow the concrete to harden undisturbed by the vibrations of adjacent traffic. [No Map]

Notice: If weather does not permit this closure to take place, then it will be re-scheduled for 27-hours on Sunday, Nov. 19 (the last Sunday before Thanksgiving Day).

TWO-WEEK NOTICE

Overnight

Monday, Nov. 13 and Tuesday, Nov. 14

9 p.m. each night to 6 a.m. each following morning

- I-10 Eastbound will close at the Sunland Park Exit (Exit 13).
- Both Sunland Park Entrance Ramps to I-10 Eastbound will close.

Detour: Motorists on I-10 Eastbound will exit at Sunland Park Drive and use North Mesa Street (SH 20) to get to Executive Center Boulevard. Motorists may re-enter I-10 Eastbound from Executive Center Boulevard. Follow the detour signs.

Overnight

Wednesday, Nov. 15 and Thursday, Nov. 16

9 p.m. each night to 6 a.m. each following morning

- I-10 Westbound will close at the Executive Center Exit (Exit 16).

Detour: Motorists on I-10 Westbound will exit at Executive Center Boulevard (Exit 16) and use North Mesa Street (SH 20) to get to Sunland Park Drive. Motorists may re-enter I-10 Westbound from Sunland Park Drive. Follow the detour signs.

No closures are scheduled for the week of Thanksgiving.

page 3 of 4



The Texas Department of Transportation is responsible for maintaining 80,000 miles of road and for supporting aviation, rail, and public transportation across the state. GO 10 is a \$158 million reconstruction of Interstate 10 that spans approximately 6 miles on El Paso's West Side between Executive Center Boulevard and North Mesa Street. GO 10 features the addition of collector-distributor lanes and a new direct connector with Border West Expressway.

Maintain a Safe System • Address Congestion • Best-in-Class State Agency • Connect Texas Communities

An Equal Opportunity Employer

www.go10elpaso.com | facebook.com/go10elpaso | twitter.com/go10ep



a TxDOT Project
For immediate release

NEWS RELEASE

EL PASO DISTRICT

Jennifer Wright
(915) 790-4340
Jennifer.Wright3@txdot.gov

CLOSURE FORECAST

The following closures are tentative. Details such as dates and closure limits could change.

Overnight

Monday, Nov. 27 and Tuesday, Nov. 28

9 p.m. each night to 6 a.m. each following morning

- I-10 Eastbound will close at the Sunland Park Exit (Exit 13).
- Both Sunland Park Entrance Ramps to I-10 Eastbound will close.

Detour: Motorists on I-10 Eastbound will exit at Sunland Park Drive and use North Mesa Street (SH 20) to get to Executive Center Boulevard. Motorists may re-enter I-10 Eastbound from Executive Center Boulevard. Follow the detour signs.

Overnight

Tuesday, Nov. 28 and Wednesday, Nov. 29

9 p.m. each night to 6 a.m. each following morning

- I-10 Westbound will close at the Executive Center Exit (Exit 16).

Detour: Motorists on I-10 Westbound will exit at Executive Center Boulevard (Exit 16) and use North Mesa Street (SH 20) to get to Sunland Park Drive. Motorists may re-enter I-10 Westbound from Sunland Park Drive. Follow the detour signs.

All closures are subject to change.

All closure times are approximate.

Exit and entrance ramps may close up to one hour prior to the start time of an I-10 highway closure.

page 4 of 4



The Texas Department of Transportation is responsible for maintaining 80,000 miles of road and for supporting aviation, rail, and public transportation across the state. GO 10 is a \$158 million reconstruction of Interstate 10 that spans approximately 6 miles on El Paso's West Side between Executive Center Boulevard and North Mesa Street. GO 10 features the addition of collector-distributor lanes and a new direct connector with Border West Expressway.

Maintain a Safe System • Address Congestion • Best-in-Class State Agency • Connect Texas Communities

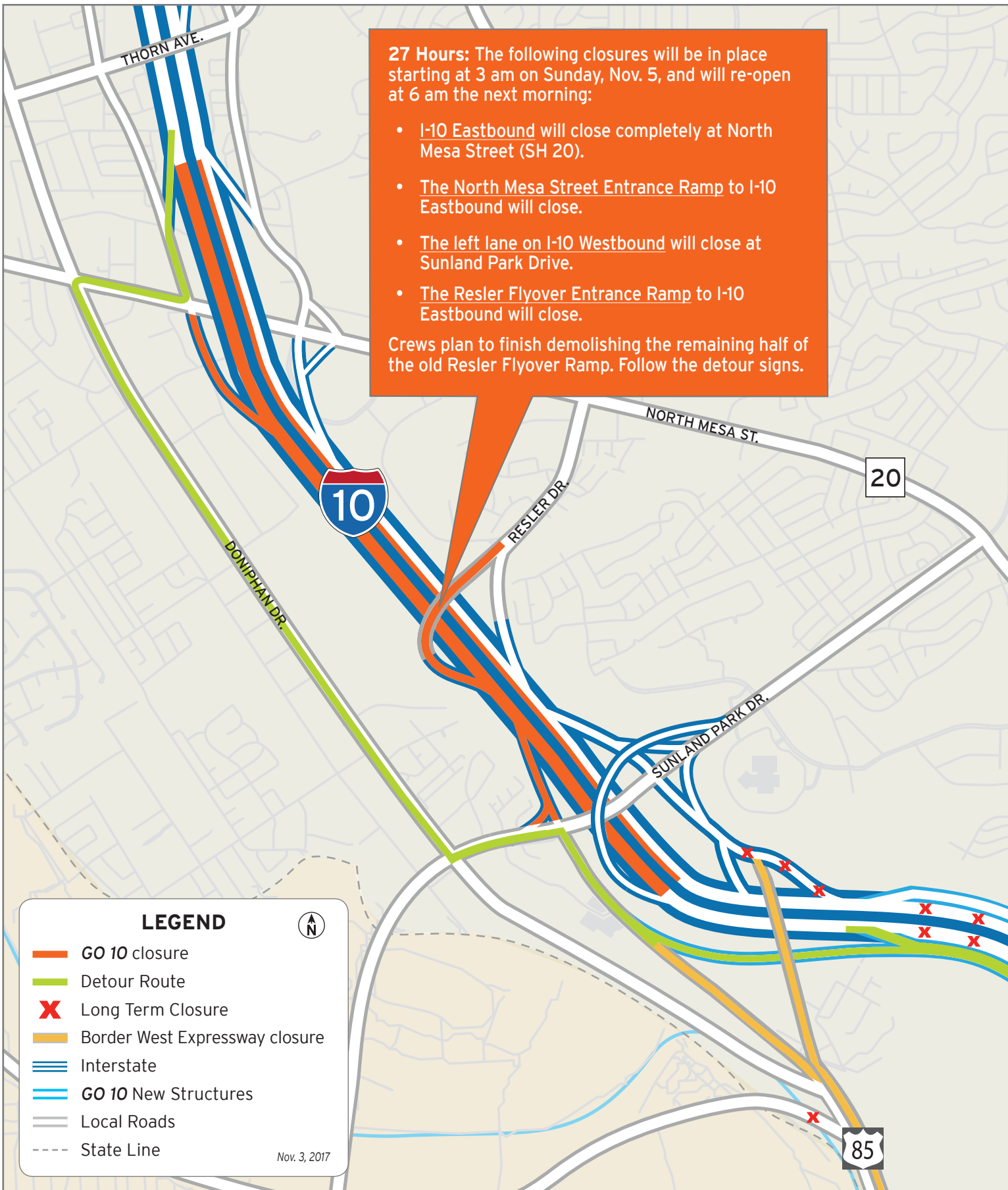
An Equal Opportunity Employer

www.go10elpaso.com | facebook.com/go10elpaso | twitter.com/go10ep

27 Hours: The following closures will be in place starting at 3 am on Sunday, Nov. 5, and will re-open at 6 am the next morning:

- I-10 Eastbound will close completely at North Mesa Street (SH 20).
- The North Mesa Street Entrance Ramp to I-10 Eastbound will close.
- The left lane on I-10 Westbound will close at Sunland Park Drive.
- The Resler Flyover Entrance Ramp to I-10 Eastbound will close.

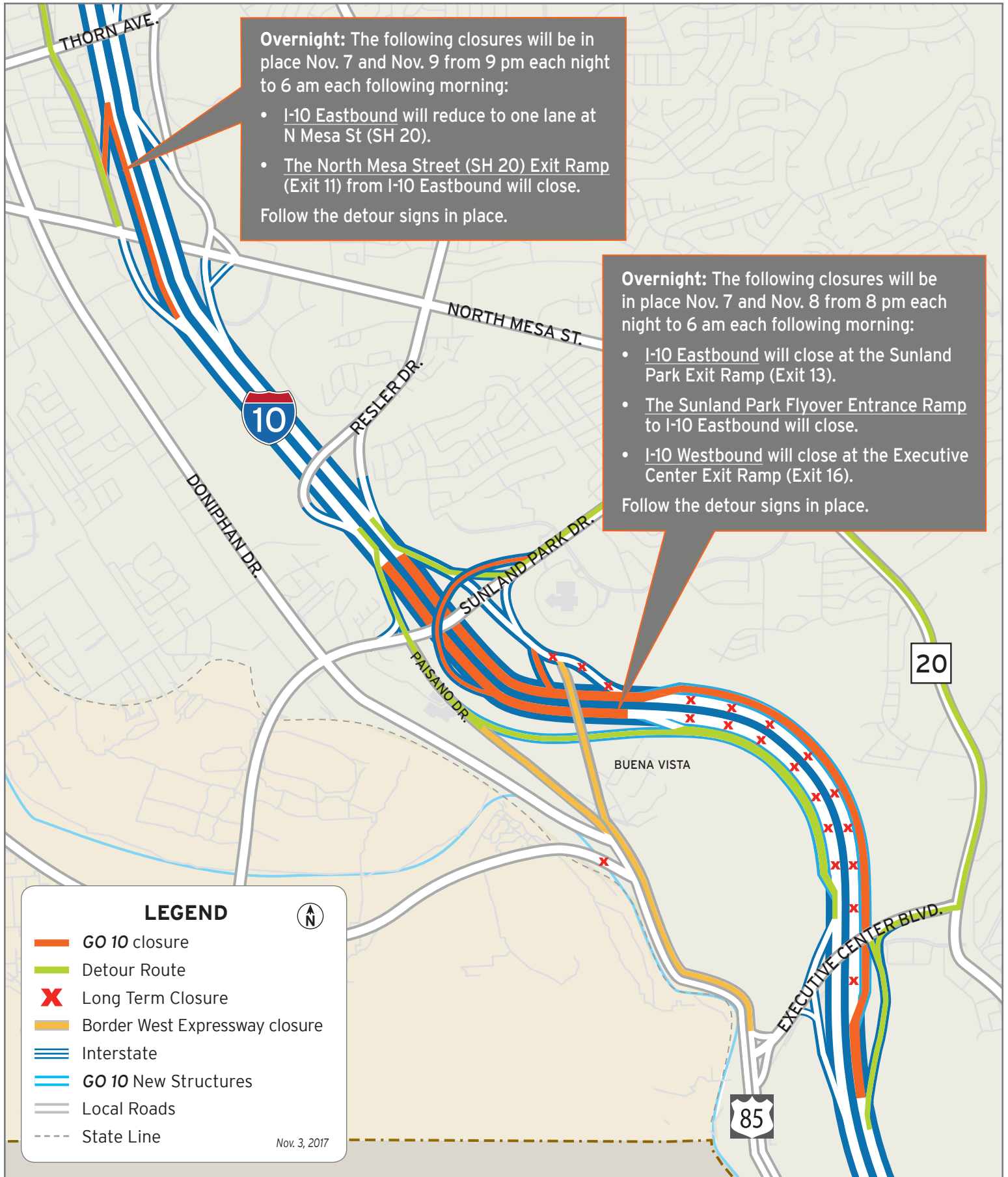
Crews plan to finish demolishing the remaining half of the old Resler Flyover Ramp. Follow the detour signs.



I-10 East closes for 27 hours at N Mesa

Map 1 of 3





I-10 night closures at various locations

Map 2 of 3





I-10 Westbound closes at Executive

Map 3 of 3

