



# NEWS RELEASE

## EL PASO DISTRICT

Jennifer Wright

(915) 790-4340

Jennifer.Wright3@txdot.gov

### a TxDOT Project

For immediate release

June 30, 2017

## Crews will erect beams for the new Sunland Flyover Ramp.

Northbound lanes on Sunland Park Drive will close Sunday night.

### Mesa @ I-10

#### Daytime

Wednesday, July 5 through Friday, July 7

9 a.m. to 4 p.m. each day

- The right lane on North Mesa Street (SH 20) – in the direction headed toward Remcon – will close underneath the I-10 Overpass between South Desert and North Desert boulevards.

Crews will work on bridge columns. [Map 1]

### I-10 & Executive

#### One Night

Thursday, July 6

9 p.m. to 6 a.m. the following morning

- I-10 Westbound will be reduced to two lanes between the Schuster Entrance Ramp and one mile after the Executive Center Overpass.

Crews are building new I-10 lanes. [No Map]

### I-10 & Sunland

#### One Night

Wednesday, July 5

9 p.m. to 6 a.m. the following morning

- I-10 Westbound will **completely** close at the Sunland Exit Ramp (Exit 13).

Detour: Traffic will exit at Sunland Park (Exit 13) and re-enter at the Sunland Park Entrance Ramp.

Crews will erect steel beams for the new Sunland Park Flyover Ramp to I-10 East. [Map 2]

#### Two Nights

Thursday, July 6 and Sunday July 9

9 p.m. each night to 6 a.m. each following morning

- I-10 Eastbound will **completely** close at the Sunland Exit Ramp (Exit 13).
- The Sunland Flyover Entrance Ramp to I-10 East will close.

Detour: Traffic will exit at Sunland Park (Exit 13) and re-enter I-10 East at the next entrance ramp.

Crews will erect steel beams for the new Sunland Park Flyover Ramp to I-10 East. [Map 2]

page 1 of 2



The Texas Department of Transportation is responsible for maintaining 80,000 miles of road and for supporting aviation, rail, and public transportation across the state. GO 10 is a \$158 million reconstruction of Interstate 10 that spans approximately 6 miles on El Paso's West Side between Executive Center Boulevard and North Mesa Street. GO 10 features the addition of collector-distributor lanes and a new direct connector with Border West Expressway.

Maintain a Safe System • Address Congestion • Best-in-Class State Agency • Connect Texas Communities

An Equal Opportunity Employer

[www.go10elpaso.com](http://www.go10elpaso.com) | [facebook.com/go10elpaso](https://facebook.com/go10elpaso) | [twitter.com/go10ep](https://twitter.com/go10ep)



**a TxDOT Project**  
For immediate release

# NEWS RELEASE

## EL PASO DISTRICT

Jennifer Wright  
(915) 790-4340  
Jennifer.Wright3@txdot.gov

### One Night

Sunday, July 9

9 p.m. to 6 a.m. the following morning

- Sunland Park Drive (northbound lanes) will **completely** close between the Sunland/Paisano intersection and Sunland Park Mall.

Detour: Since the Sunland Park Overpass across I-10 will be impassable, vehicles on Sunland Park Drive (coming from Doniphan Dr) will have to turn right on Paisano Drive and enter I-10 East. Vehicles will exit at Executive Center (Exit 16), then take Executive Center Boulevard to North Mesa Street (SH 20). Finally, vehicles will take North Mesa Street (SH 20) to Sunland Park Drive.

Crews will erect steel beams for the new Sunland Park Flyover Ramp to I-10 East. [Map 3]

### Two-Week Look Ahead

Closures below this line continue to develop. Details such as dates are being finalized and could change; however, in an effort to provide information as far in advance as possible, we offer the following still-developing information:

### One Night

Tuesday, July 11

9 p.m. to 6 a.m.

- I-10 in both directions will completely close at the Sunland Park Exits (Exit 13).

### Two Nights

Wednesday, July 12 and Thursday, July 13

9 p.m. to 6 a.m.

- I-10 Westbound will completely close at the Sunland Park Exit (Exit 13)

All closure start times and end times are approximate.

All closures are subject to change.

page 2 of 2

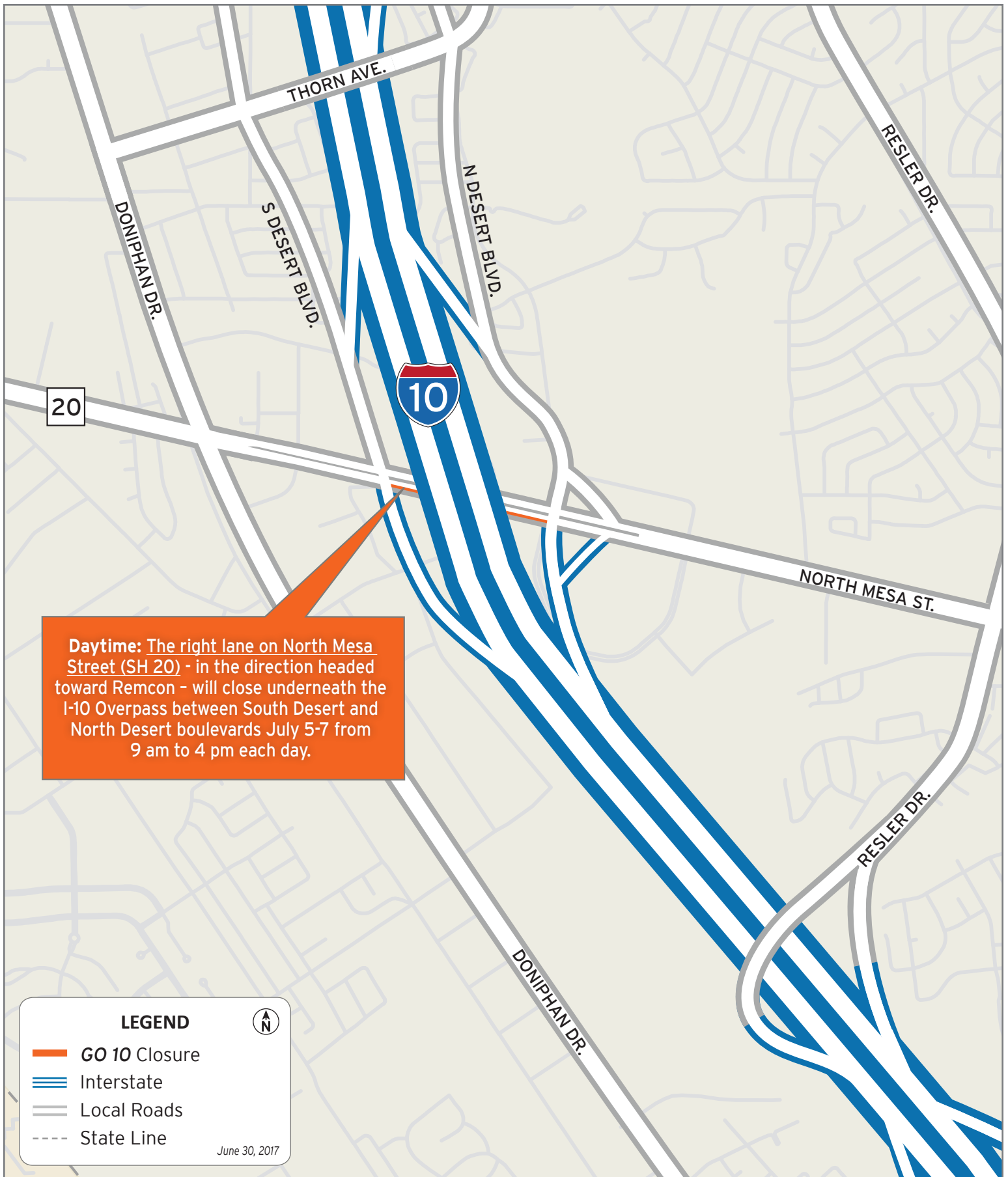


The Texas Department of Transportation is responsible for maintaining 80,000 miles of road and for supporting aviation, rail, and public transportation across the state. GO 10 is a \$158 million reconstruction of Interstate 10 that spans approximately 6 miles on El Paso's West Side between Executive Center Boulevard and North Mesa Street. GO 10 features the addition of collector-distributor lanes and a new direct connector with Border West Expressway.

Maintain a Safe System • Address Congestion • Best-in-Class State Agency • Connect Texas Communities

An Equal Opportunity Employer

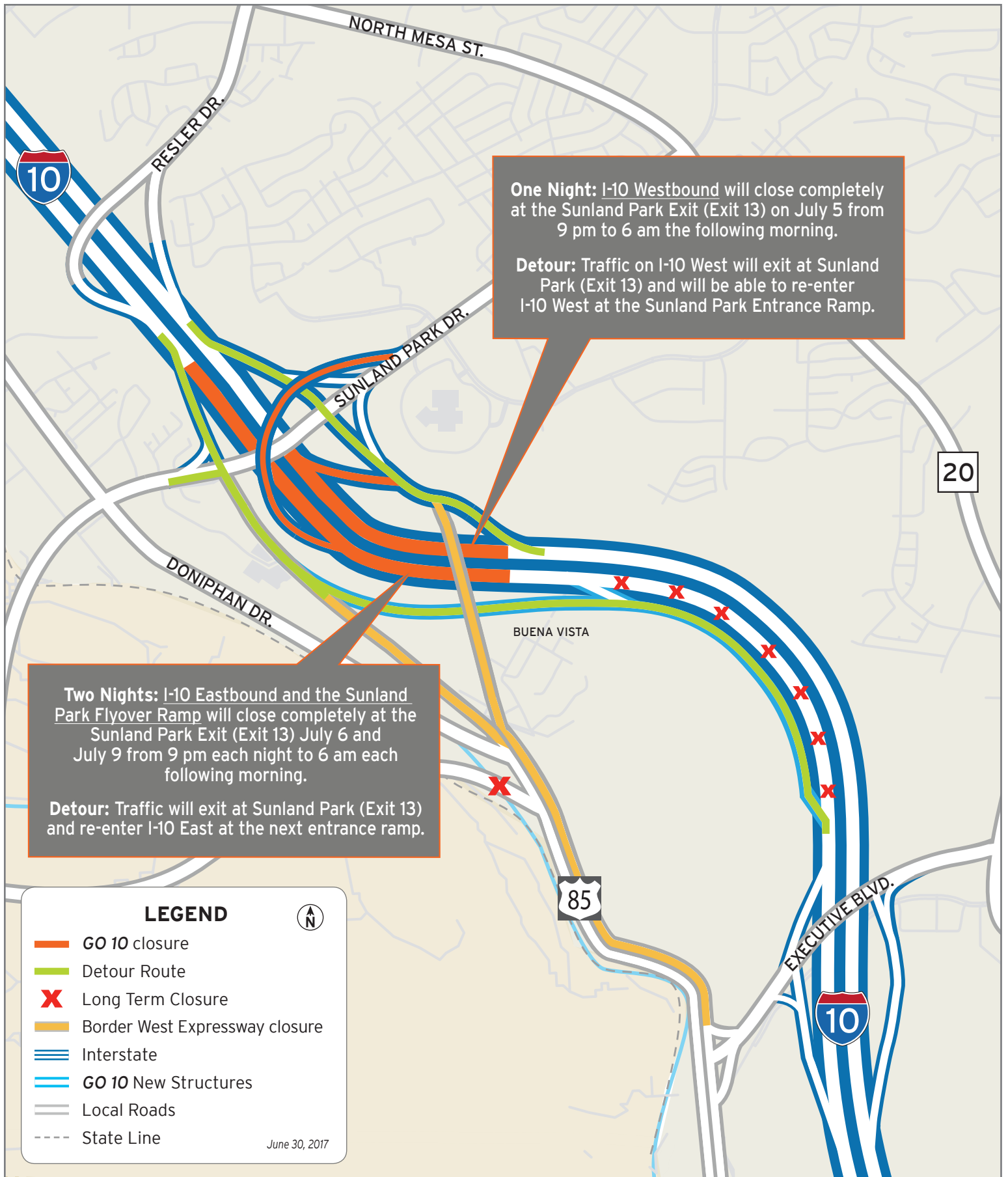
[www.go10elpaso.com](http://www.go10elpaso.com) | [facebook.com/go10elpaso](https://facebook.com/go10elpaso) | [twitter.com/go10ep](https://twitter.com/go10ep)



# Lane closed on North Mesa Street

Map 1 of 3





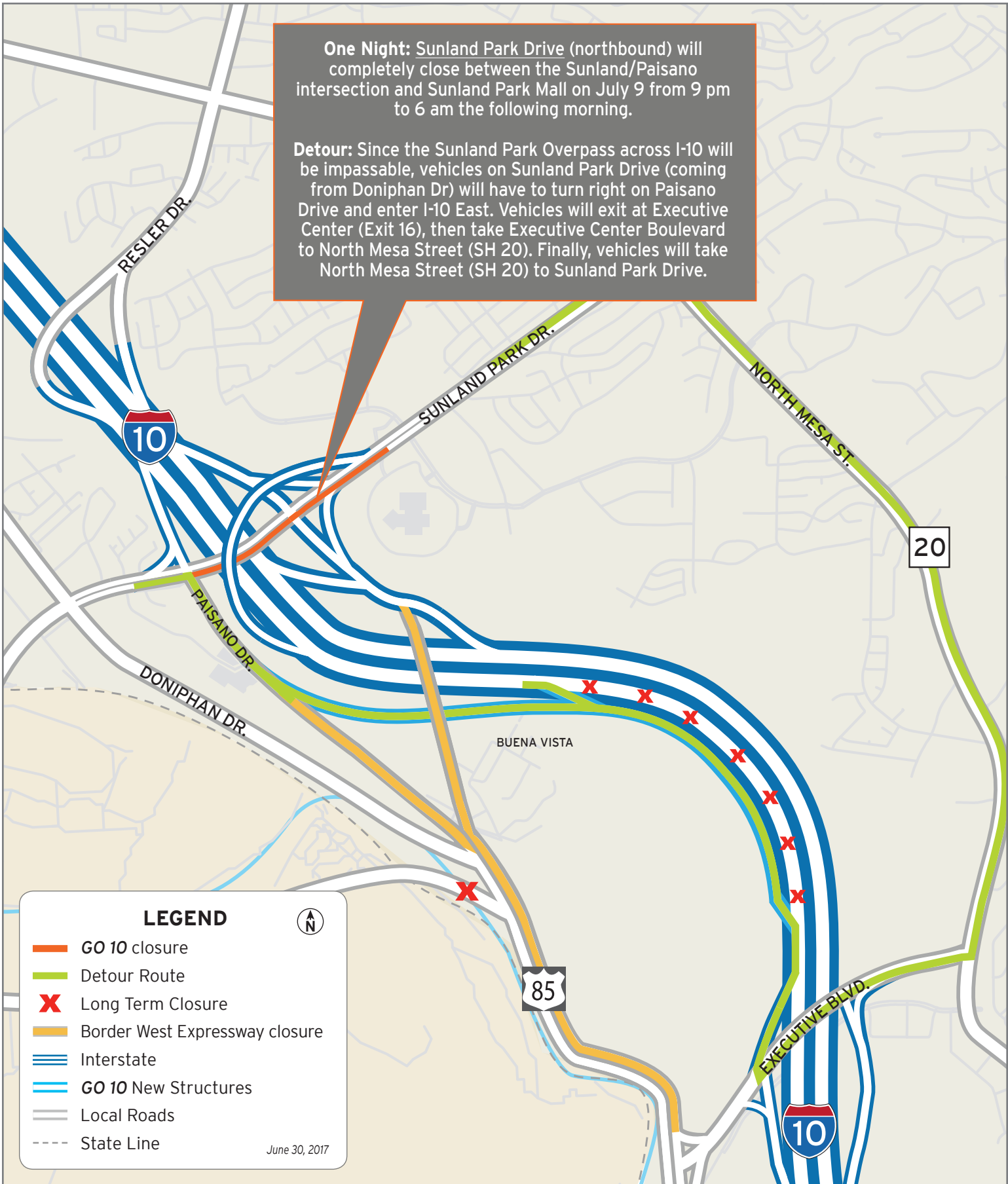
# Full Closure of I-10 at Sunland

Map 2 of 3



**One Night:** Sunland Park Drive (northbound) will completely close between the Sunland/Paisano intersection and Sunland Park Mall on July 9 from 9 pm to 6 am the following morning.

**Detour:** Since the Sunland Park Overpass across I-10 will be impassable, vehicles on Sunland Park Drive (coming from Doniphan Dr) will have to turn right on Paisano Drive and enter I-10 East. Vehicles will exit at Executive Center (Exit 16), then take Executive Center Boulevard to North Mesa Street (SH 20). Finally, vehicles will take North Mesa Street (SH 20) to Sunland Park Drive.



# Closures at Sunland Park Drive

Map 3 of 3

