



a TxDOT Project
For immediate release

NEWS RELEASE

EL PASO DISTRICT

Jennifer Wright
(915) 790-4340
Jennifer.Wright3@txdot.gov

July 27, 2018

Closures will affect motorists on North Mesa Street and motorists exiting I-10 at North Mesa Street.

North Mesa Street

Continuous

Monday, July 30 at 9 a.m. through Friday, August 3 at 3 p.m.

- The right lane on North Mesa Street (SH 20) – in the direction traveling toward Doniphan Drive – will close between North Desert Boulevard and Osborne Drive.

Crews will continue work to install a storm drain pipe. [Map 1]

Note: One Sun Metro bus stop on North Mesa Street at Osborne Drive (near Taco Cabana) will be closed during this work activity. An alternate bus stop will be available on North Mesa Street at Crossroads Drive (near Pizza Hut). For more information, contact Sun Metro at (915) 212-3436 or (915) 212-3300.

Overnight

Monday, July 30 and Tuesday, July 31
9 p.m. to 6 a.m. nightly

- North Mesa Street (SH 20) in both directions will close between South Desert and North Desert boulevards.
- There will be no access to the I-10 Westbound entrance ramp from North Mesa Street (SH 20).
- The North Mesa exit ramp (exit 11) from I-10 Westbound will close.

Detour: Motorists should find an alternate route or follow the detour signs in place.

Business access: Access to area businesses will be open.

Crews will be working on the I-10 overpass and working on traffic signals. [Map 2]

Overnight

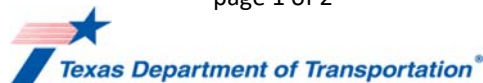
Wednesday, August 1 and Thursday, August 2
9 p.m. to 6 a.m. nightly

- North Mesa Street (SH 20) – in the direction traveling toward Doniphan Drive – will close between North Desert and South Desert boulevards.
- The North Mesa exit ramp (exit 11) from I-10 Westbound will close.

Detour: Motorists should find an alternate route or follow the detour signs in place.

Crews will be paving lanes on North Mesa Street. [Map 3]

page 1 of 2



The Texas Department of Transportation is responsible for maintaining 80,000 miles of road and for supporting aviation, rail, and public transportation across the state. GO 10 is a \$158 million reconstruction of Interstate 10 that spans approximately 6 miles on El Paso's West Side between Executive Center Boulevard and North Mesa Street. GO 10 features the addition of collector-distributor lanes and a new direct connector with Border West Expressway.

Maintain a Safe System • Address Congestion • Best-in-Class State Agency • Connect Texas Communities

An Equal Opportunity Employer

www.go10elpaso.com | facebook.com/go10elpaso | twitter.com/go10ep



a TxDOT Project
For immediate release

NEWS RELEASE

EL PASO DISTRICT

Jennifer Wright
(915) 790-4340
Jennifer.Wright3@txdot.gov

Advance Notice

The following closures are still developing. Details, such as dates, may change.

Continuous

Monday, August 6 at 9 a.m. through Thursday, August 9 until 3 p.m.

- The Sunland Park exit ramp from I-10 Westbound will be kept to one lane.

Detour: Motorists on I-10 Westbound should slow down as they approach the Sunland Park exit. Traffic on I-10 may slow or stop suddenly.

Overnight

Tuesday, August 7 through Thursday, August 9

9 p.m. to 6 a.m. nightly

- I-10 Westbound will close at Executive Center (Exit 16). **Detour:** Motorists will exit at Executive Center Boulevard (Exit 16), follow it to North Mesa Street (SH 20), take North Mesa Street (SH 20) to Sunland Park Drive. Motorists may re-enter I-10 Westbound using the Sunland Park Drive entrance ramp.
- The Schuster Avenue entrance ramp to I-10 Westbound will close.
- I-10 Eastbound will close at Sunland Park (Exit 13). **Detour:** Motorists will exit at Sunland Park Drive (Exit 13) and immediately re-enter I-10 East at the next entrance ramp.
- The Sunland Park Drive overpass at I-10 will close in both directions.
- The Resler Drive flyover entrance ramp to I-10 Eastbound will close.

Overnight

Tuesday, August 13 through Thursday, August 16

9 p.m. to 6 a.m. nightly

- I-10 Westbound will close at Executive Center (Exit 16).
- The Schuster Avenue entrance ramp to I-10 Westbound will close.
- The Sunland Park Drive overpass at I-10 will close in both directions.

Detour: Motorists will exit at Executive Center Boulevard (Exit 16), follow it to North Mesa Street (SH 20), take North Mesa Street (SH 20) to Sunland Park Drive. Motorists may re-enter I-10 Westbound using the Sunland Park Drive entrance ramp.

All closures are subject to change. All closure times are approximate.
Exit and entrance ramps may close up to one hour prior to the start time of an I-10 closure.

page 2 of 2

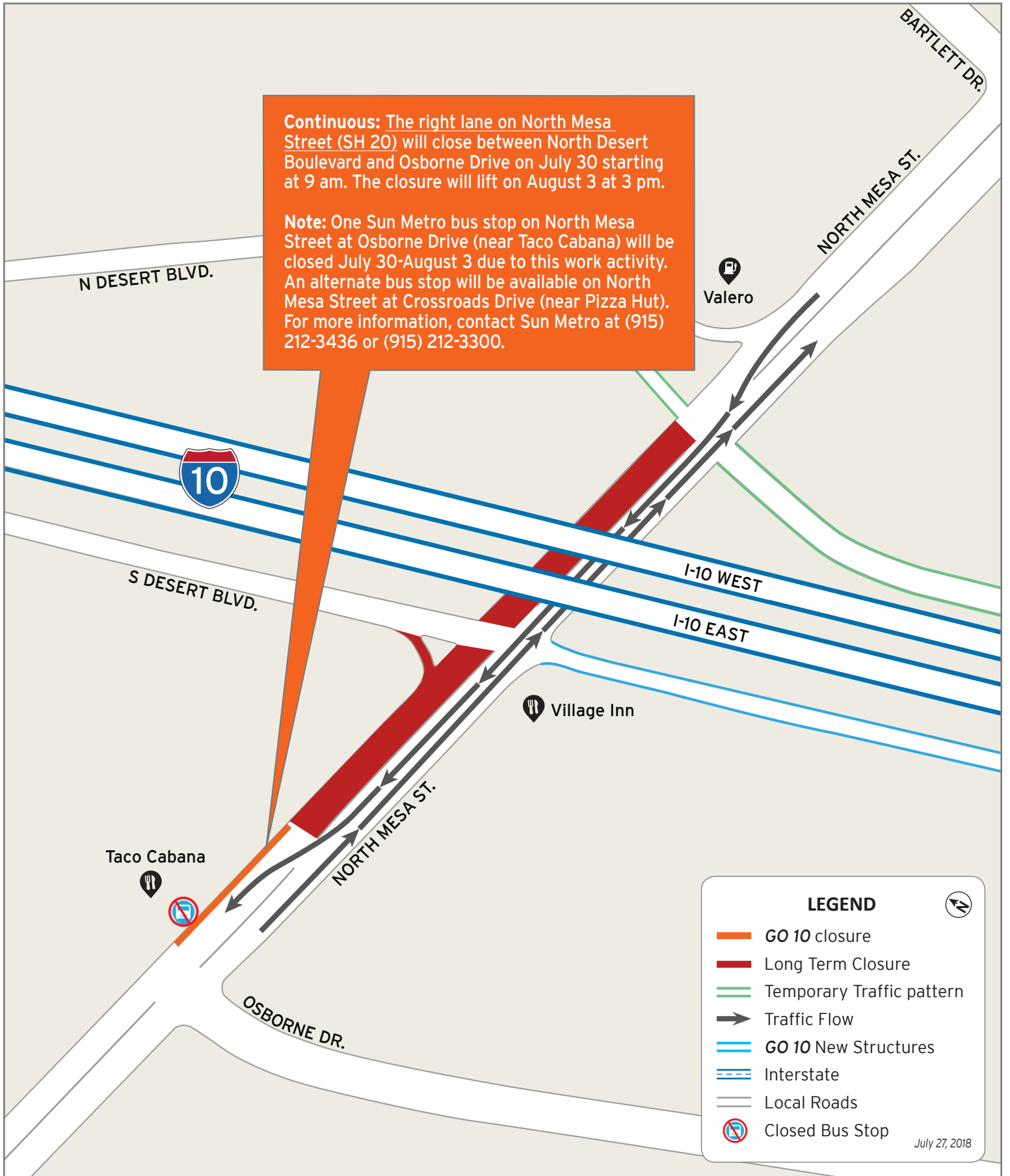


The Texas Department of Transportation is responsible for maintaining 80,000 miles of road and for supporting aviation, rail, and public transportation across the state. GO 10 is a \$158 million reconstruction of Interstate 10 that spans approximately 6 miles on El Paso's West Side between Executive Center Boulevard and North Mesa Street. GO 10 features the addition of collector-distributor lanes and a new direct connector with Border West Expressway.

Maintain a Safe System • Address Congestion • Best-in-Class State Agency • Connect Texas Communities

An Equal Opportunity Employer

www.go10elpaso.com | facebook.com/go10elpaso | twitter.com/go10ep



Lane closure on North Mesa

Map 1 of 3

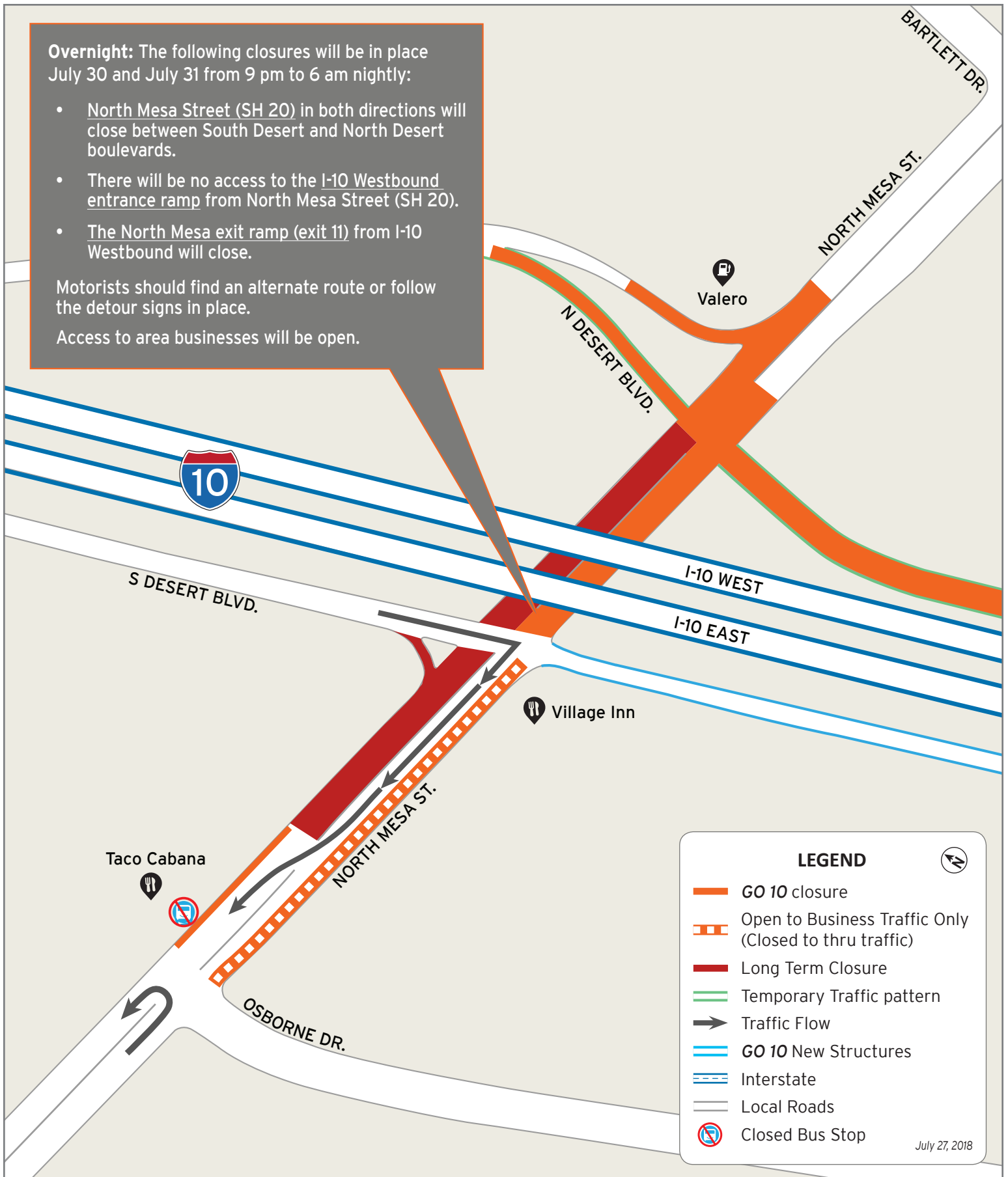


Overnight: The following closures will be in place July 30 and July 31 from 9 pm to 6 am nightly:

- North Mesa Street (SH 20) in both directions will close between South Desert and North Desert boulevards.
- There will be no access to the I-10 Westbound entrance ramp from North Mesa Street (SH 20).
- The North Mesa exit ramp (exit 11) from I-10 Westbound will close.

Motorists should find an alternate route or follow the detour signs in place.

Access to area businesses will be open.



Closures on North Mesa

Map 2 of 3



Overnight: The following closures will be in place August 1 and August 2 from 9 pm to 6 am nightly:

- North Mesa Street (SH 20) southbound will close between South Desert and North Desert boulevards.
- The North Mesa exit ramp (exit 11) from I-10 Westbound will close.

Motorists should find an alternate route or follow the detour signs in place.



Closures on North Mesa

Map 3 of 3

