



a TxDOT Project
For immediate release

NEWS RELEASE

EL PASO DISTRICT

Jennifer Wright
(915) 790-4340
Jennifer.Wright3@txdot.gov

January 26, 2018

No entry to I-10 East from North Mesa on Monday

Update: Paisano (US 85) closure is extended to March 4 due to weather delays

I-10 East @ Mesa

Daytime

Monday, Jan. 29

9 am to 4 p.m.

- The North Mesa Street entrance ramp to I-10 Eastbound will close.

Detour: Motorists should use an alternate entrance ramp to I-10 East. Detour signs will direct people to Doniphan Drive and then to the Sunland Park Drive entrance ramp to I-10 Eastbound.

Crews will be moving 960 feet of barrier walls and re-configuring lane geometry on the entrance ramp. [No Map]

I-10 West @ Executive

Overnight

Monday, Jan. 29

9 p.m. to 6 a.m.

- I-10 Westbound will close completely between Executive Center Boulevard (Exit 16) and Sunland Park Drive.
- The Schuster/UTEP entrance ramp to I-10 Westbound will close.
- The Paisano Drive entrance ramp to I-10 Eastbound (in front of the auto dealerships) will close.
- Crockett Street access to Paisano Drive will not be available.

Detours:

- I-10 Westbound traffic will exit at Executive Center Boulevard (Exit 16) and take North Mesa Street (SH 20) to Sunland Park Drive where motorists may re-enter I-10 Westbound.
- Motorists won't be able to enter I-10 Eastbound from Paisano Drive (US 85) so they will be detoured to North Mesa Street (SH 20), then to Executive Center Boulevard, then to the Executive Center entrance ramp to I-10 Eastbound.

Crews will be working on the all-new US 85 overpass. [Map 1]

page 1 of 4



The Texas Department of Transportation is responsible for maintaining 80,000 miles of road and for supporting aviation, rail, and public transportation across the state. GO 10 is a \$158 million reconstruction of Interstate 10 that spans approximately 6 miles on El Paso's West Side between Executive Center Boulevard and North Mesa Street. GO 10 features the addition of collector-distributor lanes and a new direct connector with Border West Expressway.

Maintain a Safe System • Address Congestion • Best-in-Class State Agency • Connect Texas Communities

An Equal Opportunity Employer

www.go10elpaso.com | facebook.com/go10elpaso | twitter.com/go10ep



NEWS RELEASE

EL PASO DISTRICT

Jennifer Wright
(915) 790-4340

Jennifer.Wright3@txdot.gov

a TxDOT Project

For immediate release

I-10 East @ Sunland

Overnight

Tuesday, Jan. 30 through Thursday, Feb. 1

9 p.m. each night to 6 a.m. each morning

- I-10 Eastbound will close completely between North Mesa Street (Exit 11) and Sunland Park Drive.
- The North Mesa Street entrance ramp to I-10 Eastbound will close.
- The Resler Drive entrance ramp to I-10 Eastbound will close.
- The Sunland Park flyover entrance ramp to I-10 Eastbound will close.

Detour: Motorists on I-10 Eastbound will exit at North Mesa Street (Exit 11) and be routed to Doniphan Drive, then to Sunland Park Drive where motorists may re-enter I-10 Eastbound. Follow the detour signs.

Crews will be working on the all-new US 85 overpass and repairing potholes and cracks. [Map 2]

LONG TERM CLOSURES

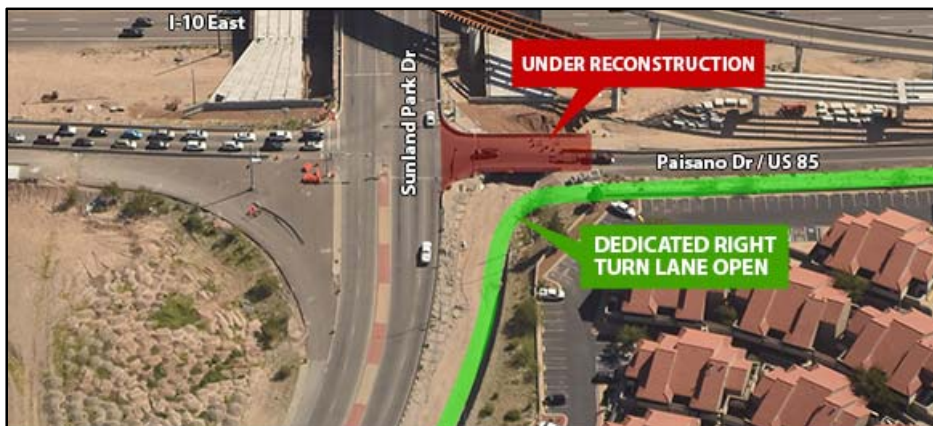
Paisano (US 85) @ Sunland

Ongoing – 24/7

Jan. 15 through Sunday, March 4

- Paisano Drive (US 85) will remain closed at Sunland Park Drive.
- Sunland Park Drive will be kept to two lanes starting at Constitution Drive all the way up to the Paisano Drive (US 85) intersection.

Motorists on Sunland Park Drive (coming from Doniphan Drive) will have access to a dedicated right-turn lane onto the Paisano Drive (US 85) and entrance ramp to I-10 Eastbound.





a TxDOT Project
For immediate release

NEWS RELEASE

EL PASO DISTRICT

Jennifer Wright
(915) 790-4340
Jennifer.Wright3@txdot.gov

To help mitigate roadway congestion in this area, motorists should consider using an alternate entrance ramp to I-10 Eastbound.

Business Access: Motorists will be able to access area businesses from Sunland Park Drive as well as from Constitution Drive and Crockett Street.

Crews are demolishing and re-building a section of Paisano Drive (US 85). [No Map]

North Mesa

Daytime

Monday, Jan. 29 through Friday, Feb. 9

9 a.m. to 4 p.m. weekdays only

- The right lane on North Mesa Street (SH 20) will close from North Desert Blvd to Osborne Drive.

Crews will be construction new roadways that connect to North Mesa Street (SH 20). [No Map]

CLOSURE FORECAST

The following closures are still developing, meaning details may change.

Overnight

Monday, Feb. 5 and Tuesday, Feb. 6

9 p.m. each night to 6 a.m. each morning

- I-10 Eastbound will close completely at North Mesa Street (Exit 11).
- The North Mesa Street entrance ramp to I-10 Eastbound will close.
- The Resler Drive entrance ramp to I-10 Eastbound will close.
- The Sunland Park flyover entrance ramp to I-10 Eastbound will close.

Overnight

Wednesday, Feb. 7 and Thursday, Feb. 8

9 p.m. each night to 6 a.m. each morning

- I-10 Westbound will close completely at Executive Center Boulevard (Exit 16).
- The Schuster/UTEP entrance ramp to I-10 Westbound will close.
- The Paisano Drive entrance ramp to I-10 Eastbound (in front of the auto dealerships) will close.
- Crockett Street access to Paisano Drive will not be available.

page 3 of 4



The Texas Department of Transportation is responsible for maintaining 80,000 miles of road and for supporting aviation, rail, and public transportation across the state. GO 10 is a \$158 million reconstruction of Interstate 10 that spans approximately 6 miles on El Paso's West Side between Executive Center Boulevard and North Mesa Street. GO 10 features the addition of collector-distributor lanes and a new direct connector with Border West Expressway.

Maintain a Safe System • Address Congestion • Best-in-Class State Agency • Connect Texas Communities

An Equal Opportunity Employer

www.go10elpaso.com | facebook.com/go10elpaso | twitter.com/go10ep



a TxDOT Project
For immediate release

NEWS RELEASE

EL PASO DISTRICT

Jennifer Wright
(915) 790-4340
Jennifer.Wright3@txdot.gov

All closures are subject to change.
All closure times are approximate.
Exit and entrance ramps may close up to one hour prior to the start time of an I-10 closure.

page 4 of 4

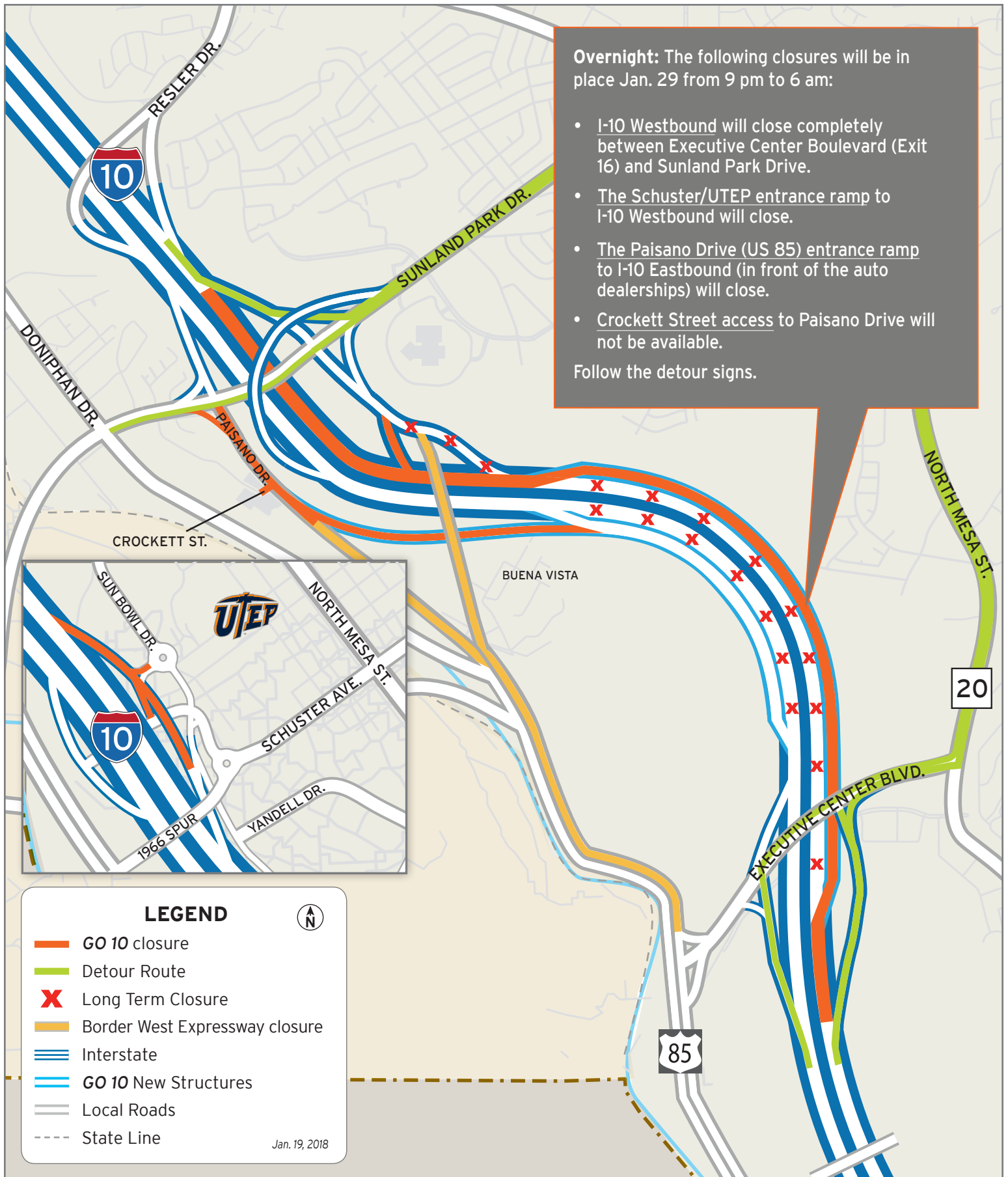


The Texas Department of Transportation is responsible for maintaining 80,000 miles of road and for supporting aviation, rail, and public transportation across the state. GO 10 is a \$158 million reconstruction of Interstate 10 that spans approximately 6 miles on El Paso's West Side between Executive Center Boulevard and North Mesa Street. GO 10 features the addition of collector-distributor lanes and a new direct connector with Border West Expressway.

Maintain a Safe System • Address Congestion • Best-in-Class State Agency • Connect Texas Communities

An Equal Opportunity Employer

www.go10elpaso.com | facebook.com/go10elpaso | twitter.com/go10ep



Overnight: The following closures will be in place Jan. 29 from 9 pm to 6 am:

- I-10 Westbound will close completely between Executive Center Boulevard (Exit 16) and Sunland Park Drive.
- The Schuster/UTEP entrance ramp to I-10 Westbound will close.
- The Paisano Drive (US 85) entrance ramp to I-10 Eastbound (in front of the auto dealerships) will close.
- Crockett Street access to Paisano Drive will not be available.

Follow the detour signs.

LEGEND

- GO 10 closure
- Detour Route
- Long Term Closure
- Border West Expressway closure
- Interstate
- GO 10 New Structures
- Local Roads
- State Line

Jan. 19, 2018



I-10 West closes at Executive

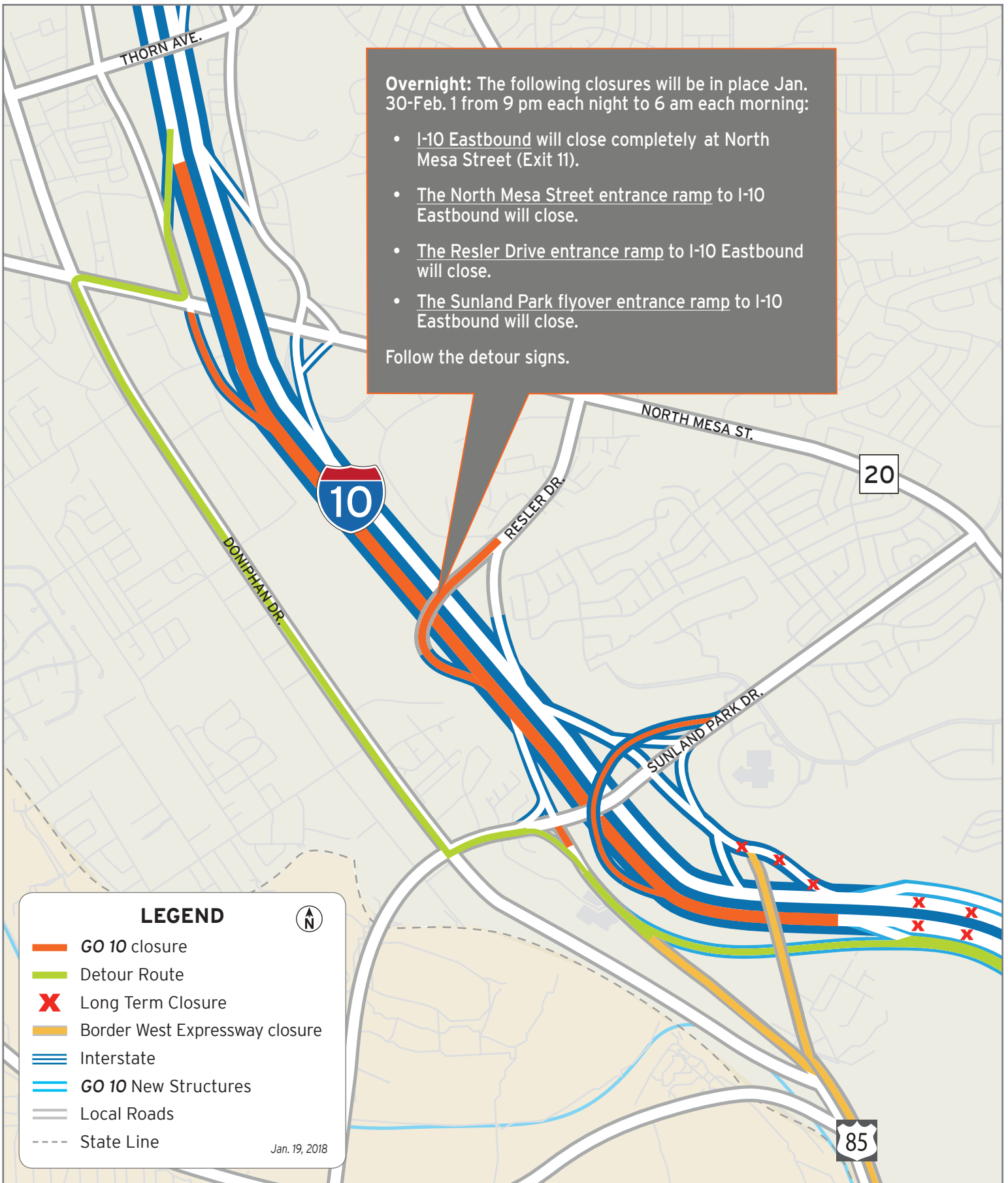
Map 1 of 2



Overnight: The following closures will be in place Jan. 30-Feb. 1 from 9 pm each night to 6 am each morning:

- I-10 Eastbound will close completely at North Mesa Street (Exit 11).
- The North Mesa Street entrance ramp to I-10 Eastbound will close.
- The Resler Drive entrance ramp to I-10 Eastbound will close.
- The Sunland Park flyover entrance ramp to I-10 Eastbound will close.

Follow the detour signs.



I-10 East closes at N Mesa

Map 2 of 2

