



# NEWS RELEASE

## EL PASO DISTRICT

Jennifer Wright  
(915) 790-4340

Jennifer.Wright3@txdot.gov

### **a TxDOT Project**

For immediate release

June 23, 2017

## **I-10 closure is set for two nights this week for work at Resler.**

### **Mesa @ I-10**

#### **Daytime**

Monday, June 26 through Friday, June 30

9 a.m. to 4 p.m. each day

- The right lane on North Mesa Street (SH 20) – in the direction headed toward Doniphan Drive – will close underneath the I-10 Overpass between North Desert and South Desert boulevards.

Crews will conduct underground sewer line work. [Map 1]

#### **Three Days and Nights**

Monday, June 26 through Wednesday, June 28

Closing at 9 a.m. on Monday, re-opening at 6 a.m. on Wednesday

- North Mesa Street (SH 20) between Osborne Drive and the Entrance Ramp to I-10 Eastbound – in the direction headed toward Remcon Circle – will be reduced to two lanes during the day and one lane at night.

Crews will conduct work on a nearby manhole. Access to nearby businesses will be maintained. [Map 1]

### **I-10 & Mesa**

#### **Overnight**

Wednesday, June 28

9 p.m. to 6 a.m. the next morning

- I-10 Eastbound will **completely** close starting at the North Mesa Exit Ramp (Exit 11). All lanes will open again at the Sunland Park Overpass.
- The Resler Flyover Ramp to I-10 Eastbound will close.

Detour: Traffic on I-10 East will exit at North Mesa Street (Exit 11) and take Doniphan Drive to Sunland Park Drive. Drivers may re-enter I-10 East from Sunland Park Drive.

Crews will be working on the Resler Flyover Ramp and on overhead digital message boards. [Map 2]

### **I-10 & Sunland**

#### **Overnight**

Wednesday, June 28

9 p.m. to 6 a.m. the next morning

- I-10 Westbound will be reduced to one lane between the Sunland Exit Ramp (Exit 13) and the Sunland Park Overpass.

Crews will be conducting bridge work. [No Map]

page 1 of 2



The Texas Department of Transportation is responsible for maintaining 80,000 miles of road and for supporting aviation, rail, and public transportation across the state. GO 10 is a \$158 million reconstruction of Interstate 10 that spans approximately 6 miles on El Paso's West Side between Executive Center Boulevard and North Mesa Street. GO 10 features the addition of collector-distributor lanes and a new direct connector with Border West Expressway.

Maintain a Safe System • Address Congestion • Best-in-Class State Agency • Connect Texas Communities

An Equal Opportunity Employer

[www.go10elpaso.com](http://www.go10elpaso.com) | [facebook.com/go10elpaso](https://facebook.com/go10elpaso) | [twitter.com/go10ep](https://twitter.com/go10ep)



**a TxDOT Project**  
For immediate release

# NEWS RELEASE

## EL PASO DISTRICT

Jennifer Wright  
(915) 790-4340  
Jennifer.Wright3@txdot.gov

### I-10 & Resler

#### Overnight

Thursday, June 29

9 p.m. to 6 a.m. the next morning

- I-10 Westbound will **completely** close at the Resler Exit Ramp (Exit 12). All lanes will open again at the North Mesa Overpass.
- The Sunland Entrance Ramp (westbound) will close.

Detour: Traffic on I-10 West will exit at Resler Drive (Exit 12) and take North Mesa Street (SH 20) to the I-10 interchange where drivers may re-enter I-10 West.

Crews will be working on the Resler Flyover Ramp and on overhead digital message boards. [Map 2]

### Recurring Closure

#### Daytime

Monday through Friday

9 a.m. to 4 p.m. each day

- The two-lane Sunland Park Exit Ramp (Exit 13, Westbound) will be reduced to one lane.

This closure is necessary to give crews access to the work area. [No Map]

### Two-Week Look Ahead

#### Overnight

Wednesday, July 5 and Thursday, July 6

9 p.m. each night to 6 a.m. each morning

- I-10 Eastbound will **completely** close between the Sunland Exit Ramp (Exit 13) and the Sunland Entrance Ramp.

Detour: Traffic on I-10 East will exit at Sunland Park (Exit 13) and immediately re-enter I-10 East at the next entrance ramp.

An illustration map will be provided next week.

All closure start times and end times are approximate.

All closures are subject to change.

page 2 of 2

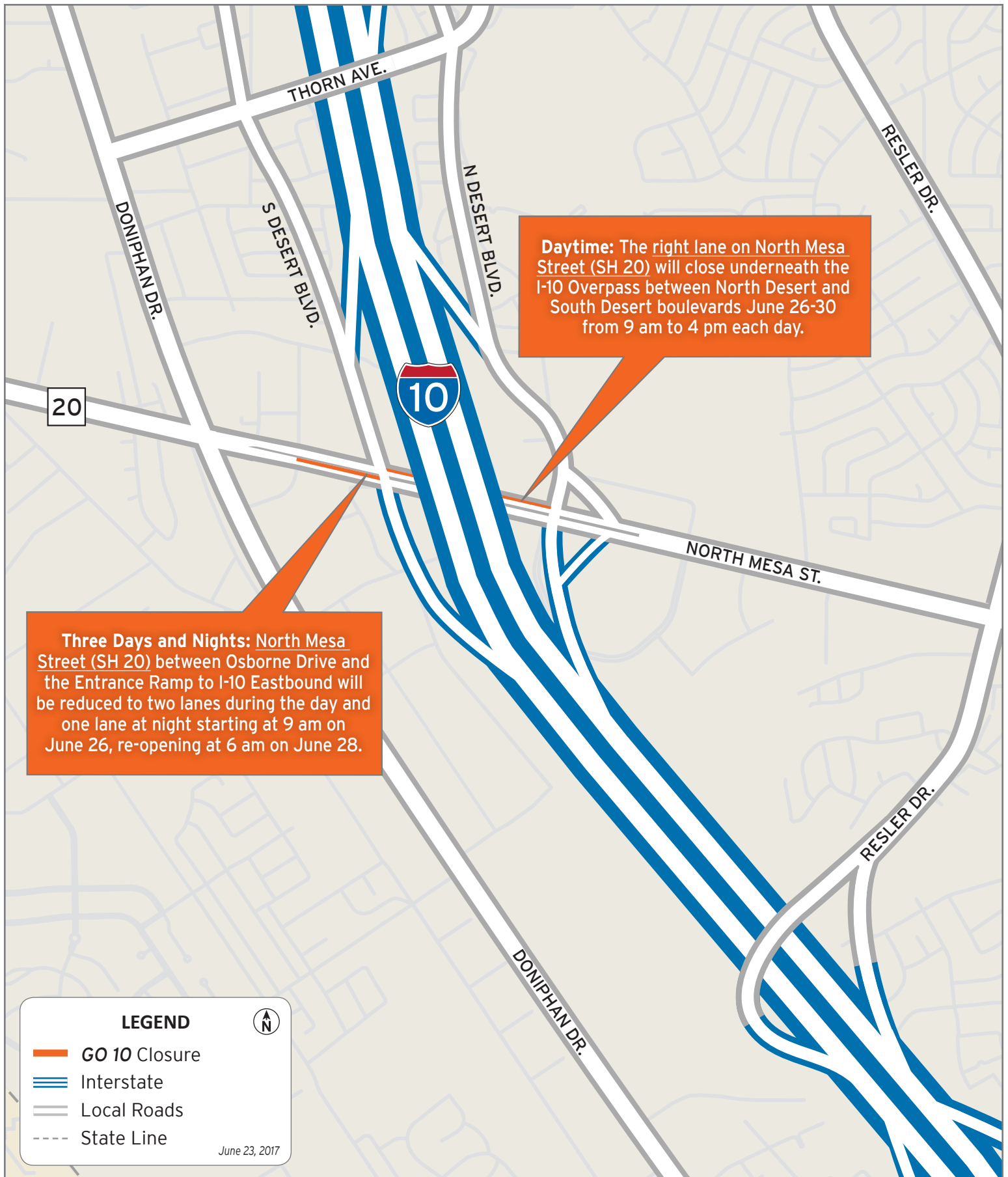


The Texas Department of Transportation is responsible for maintaining 80,000 miles of road and for supporting aviation, rail, and public transportation across the state. GO 10 is a \$158 million reconstruction of Interstate 10 that spans approximately 6 miles on El Paso's West Side between Executive Center Boulevard and North Mesa Street. GO 10 features the addition of collector-distributor lanes and a new direct connector with Border West Expressway.

Maintain a Safe System • Address Congestion • Best-in-Class State Agency • Connect Texas Communities

An Equal Opportunity Employer

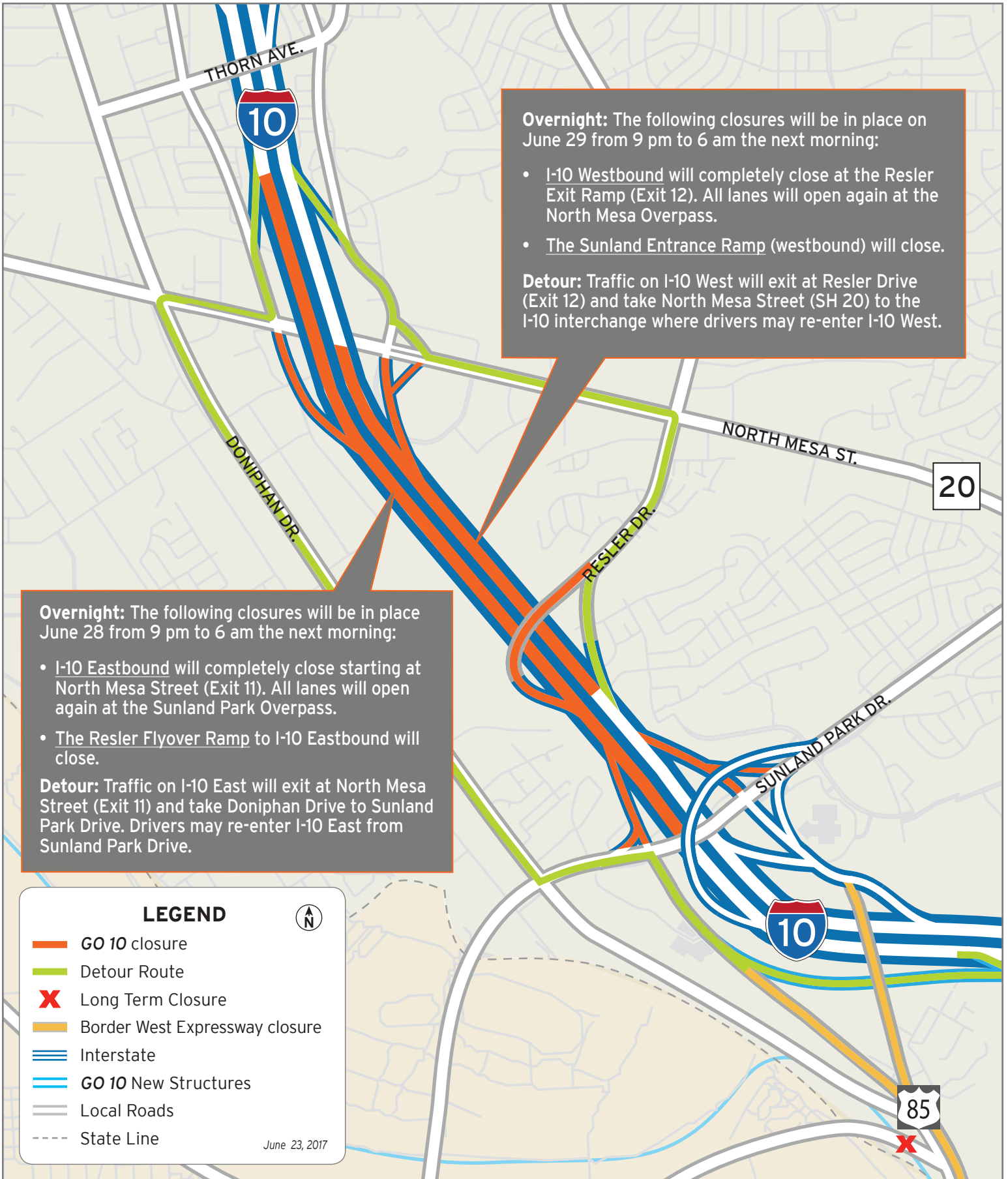
[www.go10elpaso.com](http://www.go10elpaso.com) | [facebook.com/go10elpaso](https://facebook.com/go10elpaso) | [twitter.com/go10ep](https://twitter.com/go10ep)



# Lane closures on North Mesa Street

Map 1 of 2





# Closures on I-10 at Resler and Mesa

Map 2 of 2

