



**a TxDOT Project**  
For immediate release

## NEWS RELEASE

**EL PASO DISTRICT**

Jennifer Wright  
(915) 790-4340  
Jennifer.Wright3@txdot.gov

February 22, 2019

### Twenty-seven-hour closures scheduled for the next two Sundays

#### I-10 East at Sunland

##### 27 HOURS

Sunday, February 24 at 3 a.m. to Monday, February 25 at 6 a.m.

- I-10 Eastbound will close completely between the Sunland Park exit ramp (Exit 13) and the Sunland Park entrance ramp.
- The Resler entrance ramp to I-10 Eastbound will close.
- The North Mesa entrance ramp to I-10 Eastbound will close.

Detour: Motorists on I-10 Eastbound will exit at Sunland Park (Exit 13) and immediately re-enter I-10 Eastbound at the Sunland Park entrance ramp.

Crews will be conducting work on the I-10 Eastbound median shoulder. [Map 1]

#### Sunland Park

##### Daytime

Monday, February 25 and Tuesday, February 26

9 a.m. to 4 p.m. each day

- One westbound lane on Sunland Park Drive will close near the mall signal lights. Note: The Sunland Park flyover entrance ramp to I-10 Eastbound will be open.
- The right lane on Paisano Drive (US 85) – in front of the auto dealerships – will close between Sunland Park Drive and Crockett Street. Note: The dedicated right turn lane will be open.

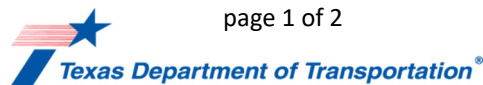
Crews will be installing traffic signal pole and a light pole. [No Map]

#### North Mesa

##### 27 HOURS

Sunday, March 3 at 3 a.m. to Monday, March 4 at 6 a.m.

- All exit ramps and entrance ramps at the I-10/North Mesa interchange will close.
- South Desert Boulevard will close at McClintock Street.
- North Mesa Street (SH 20) will close in both directions between Osborne Drive and Remcon Circle.



page 1 of 2

The Texas Department of Transportation is responsible for maintaining 80,000 miles of road and for supporting aviation, rail, and public transportation across the state. GO 10 is a \$158 million reconstruction of Interstate 10 that spans approximately 6 miles on El Paso's West Side between Executive Center Boulevard and North Mesa Street. GO 10 features the addition of collector-distributor lanes and a new direct connector with Border West Expressway.

Maintain a Safe System • Address Congestion • Best-in-Class State Agency • Connect Texas Communities

An Equal Opportunity Employer

[www.go10elpaso.com](http://www.go10elpaso.com) | [facebook.com/go10elpaso](https://facebook.com/go10elpaso) | [twitter.com/go10ep](https://twitter.com/go10ep)



**a TxDOT Project**  
For immediate release

## NEWS RELEASE

### EL PASO DISTRICT

Jennifer Wright  
(915) 790-4340  
Jennifer.Wright3@txdot.gov

**Milestone on North Mesa:** Once this 27-hour closure lifts, lanes on North Mesa Street between Osborne and Remcon will be in their final configuration and driveways to nearby businesses will be restored. [Map 2]

Note: If this work activity is canceled, then it will be re-scheduled for March 10-11.

All closures are subject to change or cancellation.

All closure times are approximate.

Exit and entrance ramps may close up to one hour prior to the start time of an I-10 closure.

page 2 of 2

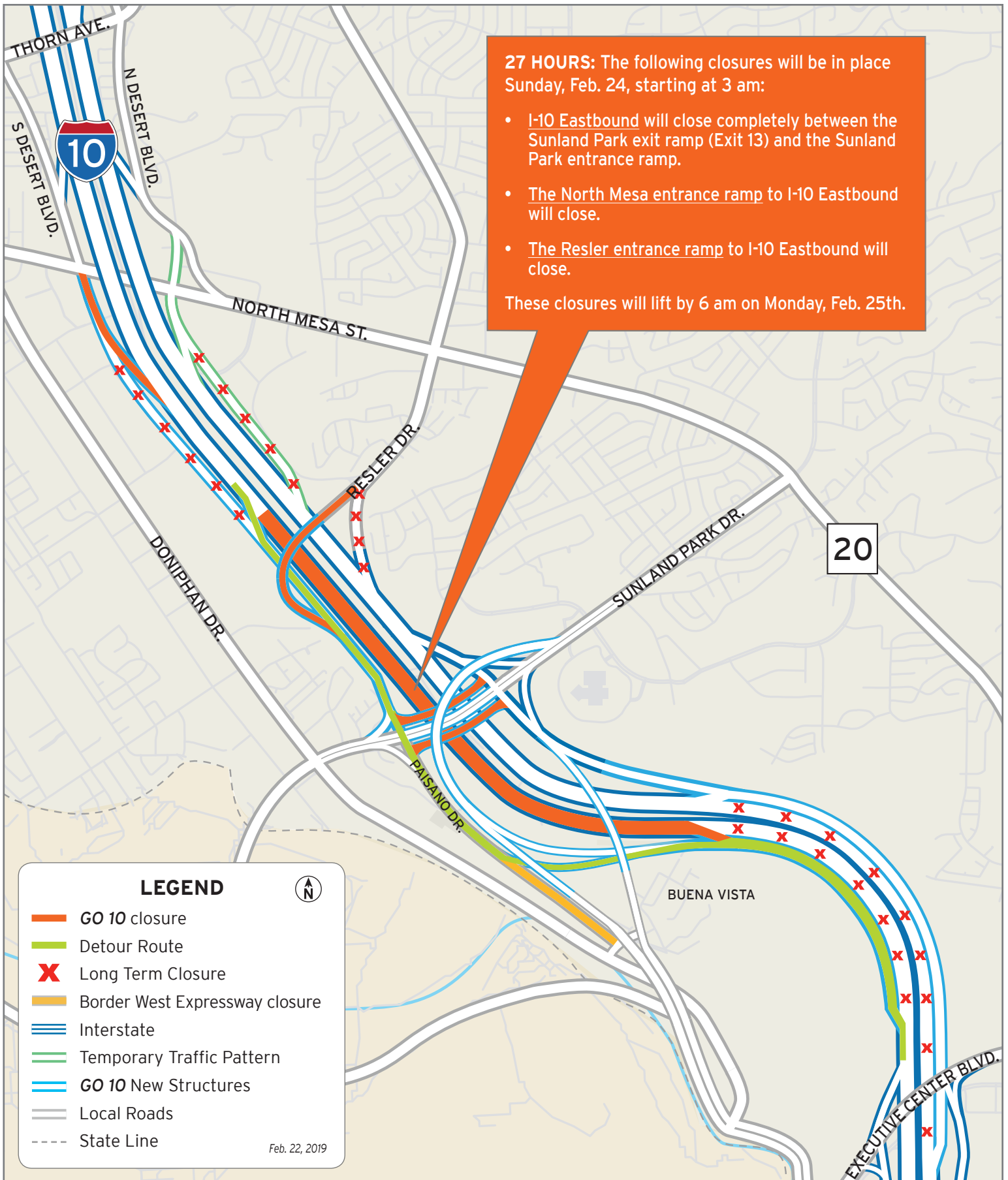


The Texas Department of Transportation is responsible for maintaining 80,000 miles of road and for supporting aviation, rail, and public transportation across the state. GO 10 is a \$158 million reconstruction of Interstate 10 that spans approximately 6 miles on El Paso's West Side between Executive Center Boulevard and North Mesa Street. GO 10 features the addition of collector-distributor lanes and a new direct connector with Border West Expressway.

Maintain a Safe System • Address Congestion • Best-in-Class State Agency • Connect Texas Communities

An Equal Opportunity Employer

[www.go10elpaso.com](http://www.go10elpaso.com) | [facebook.com/go10elpaso](https://facebook.com/go10elpaso) | [twitter.com/go10ep](https://twitter.com/go10ep)



**27 HOURS:** The following closures will be in place Sunday, Feb. 24, starting at 3 am:

- I-10 Eastbound will close completely between the Sunland Park exit ramp (Exit 13) and the Sunland Park entrance ramp.
- The North Mesa entrance ramp to I-10 Eastbound will close.
- The Resler entrance ramp to I-10 Eastbound will close.

These closures will lift by 6 am on Monday, Feb. 25th.

**LEGEND**

- GO 10 closure
- Detour Route
- Long Term Closure
- Border West Expressway closure
- Interstate
- Temporary Traffic Pattern
- GO 10 New Structures
- Local Roads
- State Line

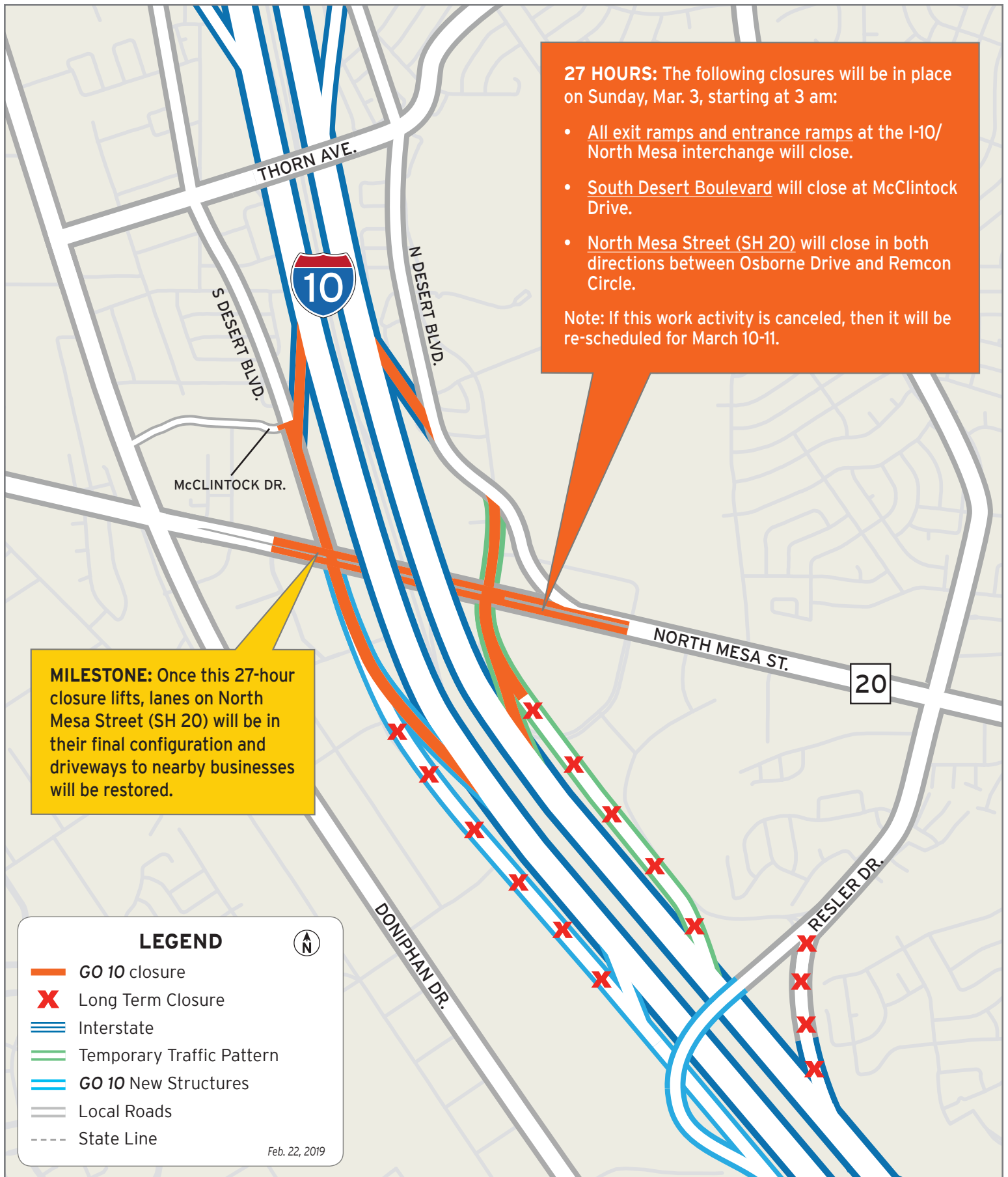
Feb. 22, 2019



# 27-hour closure of I-10 East

Map 1 of 2





**27 HOURS:** The following closures will be in place on Sunday, Mar. 3, starting at 3 am:

- All exit ramps and entrance ramps at the I-10/ North Mesa interchange will close.
- South Desert Boulevard will close at McClintock Drive.
- North Mesa Street (SH 20) will close in both directions between Osborne Drive and Remcon Circle.

Note: If this work activity is canceled, then it will be re-scheduled for March 10-11.

**MILESTONE:** Once this 27-hour closure lifts, lanes on North Mesa Street (SH 20) will be in their final configuration and driveways to nearby businesses will be restored.



# 27-hour closure at I-10/North Mesa

Map 2 of 2

