



a TxDOT Project
For immediate release

NEWS RELEASE

EL PASO DISTRICT

Jennifer Wright
(915) 790-4340
Jennifer.Wright3@txdot.gov

July 20, 2018

For two nights, I-10 East closes for several miles starting at North Mesa Street

I-10 East and Sunland Park Drive

Nightly

Tuesday, July 24 and Wednesday, July 25

9 p.m. to 6 a.m.

- I-10 Eastbound will close at North Mesa Street (Exit 11). Detour: Motorists will exit at North Mesa Street (Exit 11) and will be able to re-enter I-10 Eastbound at the downtown Wyoming Avenue entrance ramp.
- The Sunland Park Drive overpass at I-10 will close in both directions.
- The North Mesa Street entrance ramp to I-10 Eastbound will close.
- The Resler Drive entrance ramp to I-10 Eastbound will close.
- Both Sunland Park Drive entrance ramps to I-10 Eastbound will close.
- Crockett Street access to Paisano Drive (US 85) will close.

Crews will be constructing bridges in several locations inside the **GO 10** project limits. [Map 1]

Note: This closure happens in conjunction with a different closure of I-10 Eastbound, which starts at Executive Center Boulevard and is being conducted by the Mesa Park Project. Information about the Mesa Park Project can be found on Twitter @TxDOTelp or by calling the Texas Department of Transportation at (915) 790-4341.

North Mesa Street

Continuous

Wednesday, July 25 at 9 a.m. through Friday, July 27 at 3 p.m.

- The right lane on North Mesa Street (SH 20) – in the direction traveling toward Doniphan Drive – will close between North Desert Boulevard and Osborne Drive.

Crews will continue work on a water storm drain. [Map 2]

Note: One Sun Metro bus stop on North Mesa Street at Osborne Drive (near Taco Cabana) will be closed July 25-27 due to this work activity. An alternate bus stop will be available on North Mesa Street at Crossroads Drive (near Pizza Hut). For more information, contact Sun Metro at (915) 212-3436 or (915) 212-3300.

page 1 of 2



The Texas Department of Transportation is responsible for maintaining 80,000 miles of road and for supporting aviation, rail, and public transportation across the state. GO 10 is a \$158 million reconstruction of Interstate 10 that spans approximately 6 miles on El Paso's West Side between Executive Center Boulevard and North Mesa Street. GO 10 features the addition of collector-distributor lanes and a new direct connector with Border West Expressway.

Maintain a Safe System • Address Congestion • Best-in-Class State Agency • Connect Texas Communities

An Equal Opportunity Employer

www.go10elpaso.com | facebook.com/go10elpaso | twitter.com/go10ep



a TxDOT Project
For immediate release

NEWS RELEASE

EL PASO DISTRICT

Jennifer Wright
(915) 790-4340
Jennifer.Wright3@txdot.gov

Advance Notice

The following closures are still developing. Details, such as dates, may change.

Nightly

Monday, July 30 and Tuesday, July 31
9 p.m. to 6 a.m.

- North Mesa Street (SH 20) in both directions will close at the I-10 overpass. Detour: Motorists should find an alternate route or follow the detour signs in place. [No map]

Continuous

Monday, August 6 at 9 a.m. through Thursday, August 9 until 3 p.m.

- The Sunland Park exit ramp from I-10 Westbound will be reduced to one lane. Detour: Motorists on I-10 Westbound should slow down as they approach the Sunland Park exit. Traffic on I-10 may slow or stop suddenly. [No map]

Nightly

Tuesday, August 7 through Thursday, August 9
9 p.m. to 6 a.m.

- I-10 Westbound will close at Executive Center (Exit 16). Detour: Motorists will exit at Executive Center Boulevard (Exit 16), follow it to North Mesa Street (SH 20), take North Mesa Street (SH 20) to Sunland Park Drive, then re-enter I-10 Westbound using the Sunland Park entrance ramp.
- I-10 Eastbound will close at Sunland Park (Exit 13). Detour: Motorists will exit at Sunland Park Drive (Exit 13) and immediately re-enter I-10 East at the next entrance ramp.
- The Sunland Park Drive overpass will close in both directions. [No map]

All closures are subject to change. All closure times are approximate.
Exit and entrance ramps may close up to one hour prior to the start time of an I-10 closure.

page 2 of 2

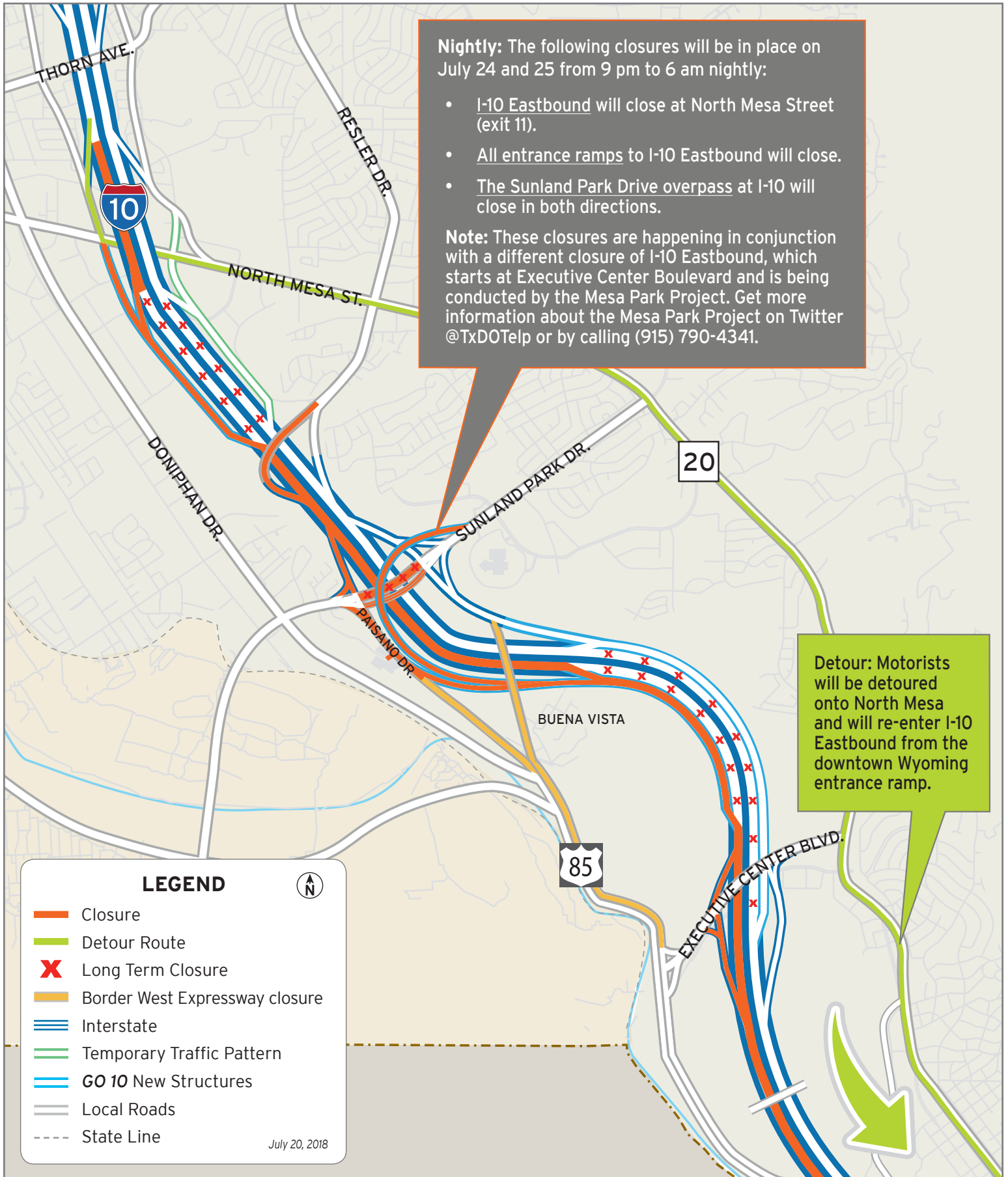


The Texas Department of Transportation is responsible for maintaining 80,000 miles of road and for supporting aviation, rail, and public transportation across the state. GO 10 is a \$158 million reconstruction of Interstate 10 that spans approximately 6 miles on El Paso's West Side between Executive Center Boulevard and North Mesa Street. GO 10 features the addition of collector-distributor lanes and a new direct connector with Border West Expressway.

Maintain a Safe System • Address Congestion • Best-in-Class State Agency • Connect Texas Communities

An Equal Opportunity Employer

www.go10elpaso.com | facebook.com/go10elpaso | twitter.com/go10ep



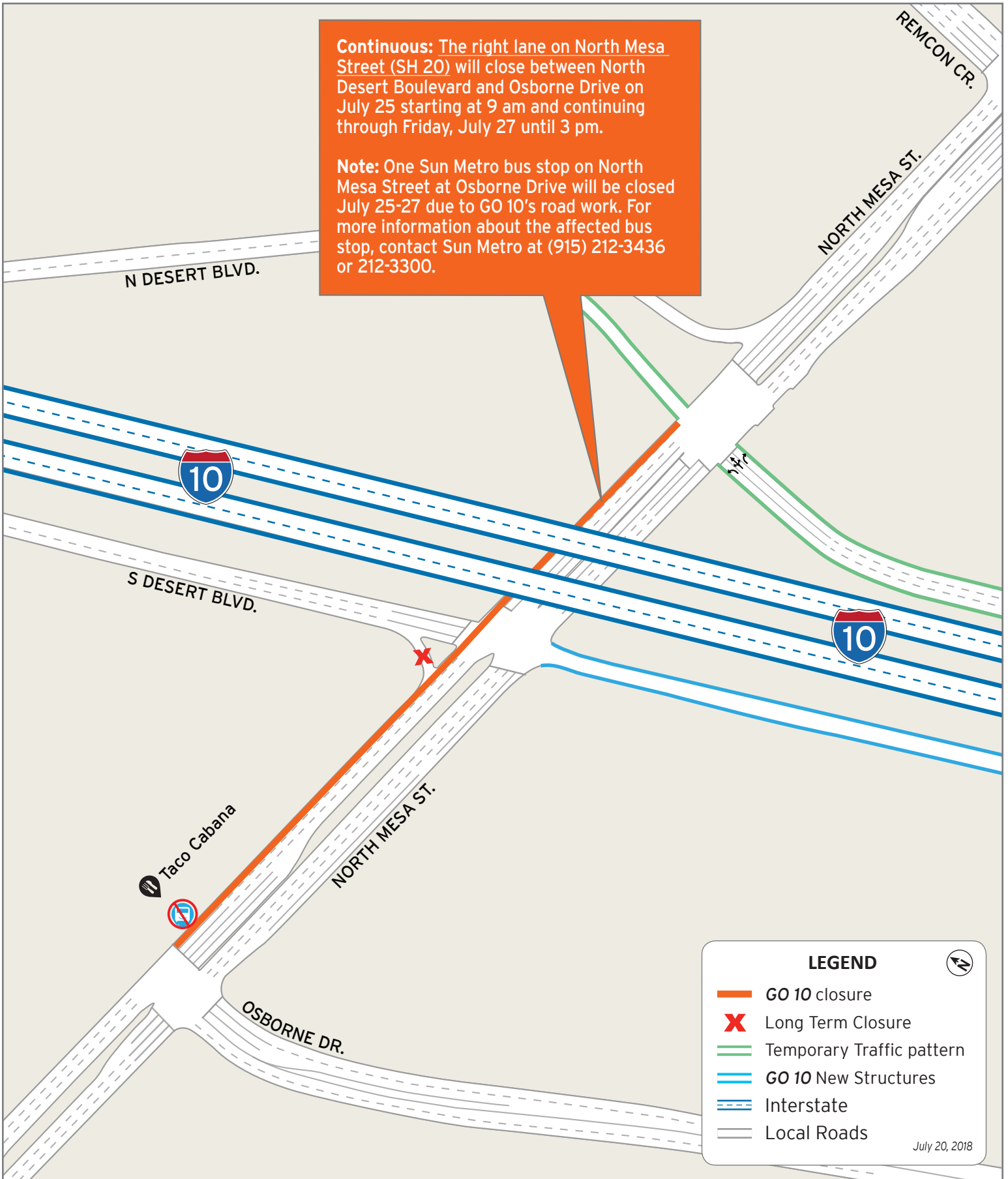
Closures on I-10 East and on Sunland

Map 1 of 2



Continuous: The right lane on North Mesa Street (SH 20) will close between North Desert Boulevard and Osborne Drive on July 25 starting at 9 am and continuing through Friday, July 27 until 3 pm.

Note: One Sun Metro bus stop on North Mesa Street at Osborne Drive will be closed July 25-27 due to GO 10's road work. For more information about the affected bus stop, contact Sun Metro at (915) 212-3436 or 212-3300.



Lane closure on North Mesa

Map 2 of 2

