



a TxDOT Project
For immediate release

NEWS RELEASE

EL PASO DISTRICT

Rebecca Reyes
(915) 790-4205

Rebecca.Reyes@txdot.gov

September 1, 2017

I-10 night closures scheduled for September 5-7. 27-hour full closure of I-10 West happens Sunday, Sept. 10

Mesa

Continual

9 a.m. Tuesday, Sept. 5 through 4 p.m. Sunday, Sept. 17

- The right through-lane on North Mesa Street (SH 20, eastbound) – in the direction moving toward Remcon Circle – will close between Osborne Drive and the I-10 Westbound Exit Ramp.

Crews will be working in shifts around the clock to prepare for placement of beams. [Map 1]

Sunland

Four Days

Tuesday, Sept. 5 through Friday, Sept. 8

9 a.m. to 4 p.m. daily

- The Sunland Park Exit Ramp from I-10 West will experience a right-turn lane closure leading up to Sunland Park Drive. The exit ramp WILL BE OPEN to traffic.

Crews will be paving and working on a retaining wall. [No Map]

I-10 West @ Sunland

Three Nights



Tuesday, Sept. 5 through Thursday, Sept. 7

9 p.m. each night to 6 a.m. each morning

- I-10 Westbound will close **completely** between the Sunland Park Exit Ramp (Exit 13) and the North Mesa Overpass.
- Sunland Park Overpass at I-10 will close **completely** between the eastbound and westbound ramps.
- The Resler Flyover Entrance Ramp to I-10 East will close.

Detours:

I-10 Westbound traffic will exit at Sunland Park (Exit 13), go to North Mesa Street (SH 20), then take North Mesa Street to I-10 where traffic may re-enter I-10 West.

Follow all detour signs in place.

Crews will be building new bridges at the I-10/Sunland Park interchange. [Map 2]

page 1 of 3



The Texas Department of Transportation is responsible for maintaining 80,000 miles of road and for supporting aviation, rail, and public transportation across the state. GO 10 is a \$158 million reconstruction of Interstate 10 that spans approximately 6 miles on El Paso's West Side between Executive Center Boulevard and North Mesa Street. GO 10 features the addition of collector-distributor lanes and a new direct connector with Border West Expressway.

Maintain a Safe System • Address Congestion • Best-in-Class State Agency • Connect Texas Communities

An Equal Opportunity Employer

www.go10elpaso.com | facebook.com/go10elpaso | twitter.com/go10ep



a TxDOT Project

For immediate release

NEWS RELEASE

EL PASO DISTRICT

Rebecca Reyes
(915) 790-4205

Rebecca.Reyes@txdot.gov

All Day, 27 Hours



Sunday, Sept. 10

3 a.m. to 6 a.m. the next day (27 hours)

- I-10 Westbound will close **completely** between Executive Center and Sunland Park.
- The left lane on I-10 East will close between the Executive Center Exit Ramp (Exit 16) and the Asarco Bridge.

Detour: Traffic on I-10 West will be detoured at the Executive Center Exit (Exit 16), onto North Mesa Street (SH 20), then to Sunland Park Drive. Traffic may use the Sunland Park Entrance Ramp to re-enter I-10 West.

Major Operation: Crews will shift I-10 Westbound traffic onto all-new I-10 westbound lanes. [Map 3]

All closure times are approximate.

Ramps may close up to 1 hour prior to the start time of an I-10 highway closure.

ALL CLOSURES ARE SUBJECT TO CHANGE.

CLOSURE FORECAST

The following closures are still developing, meaning details such as dates and closure limits could change:

Four Nights

Monday, Sept. 11 through Thursday, Sept. 14

9 p.m. each night to 6 a.m. each morning

- I-10 Eastbound will close **completely** between the North Mesa Overpass and the Executive Center Overpass.
- I-10 Westbound will close **completely** between the Sunland Park Exit Ramp and the Sunland Park Entrance Ramp. Detour route is to be determined.
- The Sunland Park Overpass at I-10 will close **completely**.
- The Sunland Park Entrance Ramp to I-10 East (in front of the Shamaley car dealership) will close.
- The Resler Flyover Entrance Ramp to I-10 East will close.

page 2 of 3



The Texas Department of Transportation is responsible for maintaining 80,000 miles of road and for supporting aviation, rail, and public transportation across the state. GO 10 is a \$158 million reconstruction of Interstate 10 that spans approximately 6 miles on El Paso's West Side between Executive Center Boulevard and North Mesa Street. GO 10 features the addition of collector-distributor lanes and a new direct connector with Border West Expressway.

Maintain a Safe System • Address Congestion • Best-in-Class State Agency • Connect Texas Communities

An Equal Opportunity Employer

www.go10elpaso.com | facebook.com/go10elpaso | twitter.com/go10ep



a TxDOT Project

For immediate release

NEWS RELEASE

EL PASO DISTRICT

Rebecca Reyes
(915) 790-4205

Rebecca.Reyes@txdot.gov

Five Nights

Sunday, Sept. 17 through Thursday, Sept. 21

9 p.m. each night to 6 a.m. each morning

- I-10 Westbound will close at Sunland Park.

Four Nights

Monday, Sept. 18 through Thursday, Sept. 21

9 p.m. each night to 6 a.m. each morning

- I-10 Eastbound will close **completely** at Redd Road (Exit 9).
- North Mesa Street (SH 20) in the both directions will close under the I-10 Overpass.
- The North Mesa exit and entrance ramps on I-10 East will close.

Major Operation: Crews are planning to set beams for the new I-10 East Overpass at N. Mesa St. (SH 20).

All closure times are approximate.

Ramps may close up to 1 hour prior to the start time of an I-10 highway closure.

ALL CLOSURES ARE SUBJECT TO CHANGE.

page 3 of 3

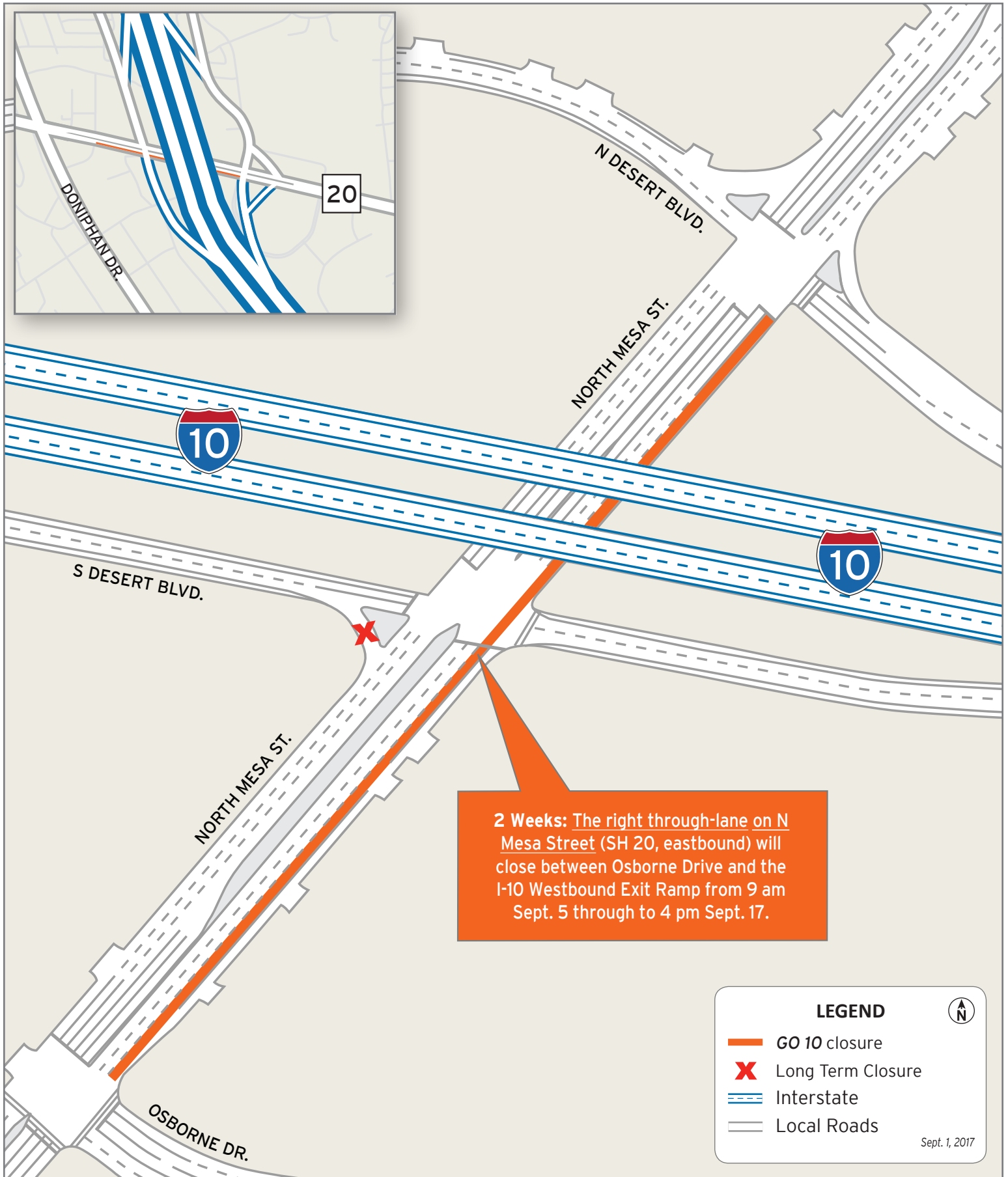


The Texas Department of Transportation is responsible for maintaining 80,000 miles of road and for supporting aviation, rail, and public transportation across the state. GO 10 is a \$158 million reconstruction of Interstate 10 that spans approximately 6 miles on El Paso's West Side between Executive Center Boulevard and North Mesa Street. GO 10 features the addition of collector-distributor lanes and a new direct connector with Border West Expressway.

Maintain a Safe System • Address Congestion • Best-in-Class State Agency • Connect Texas Communities

An Equal Opportunity Employer

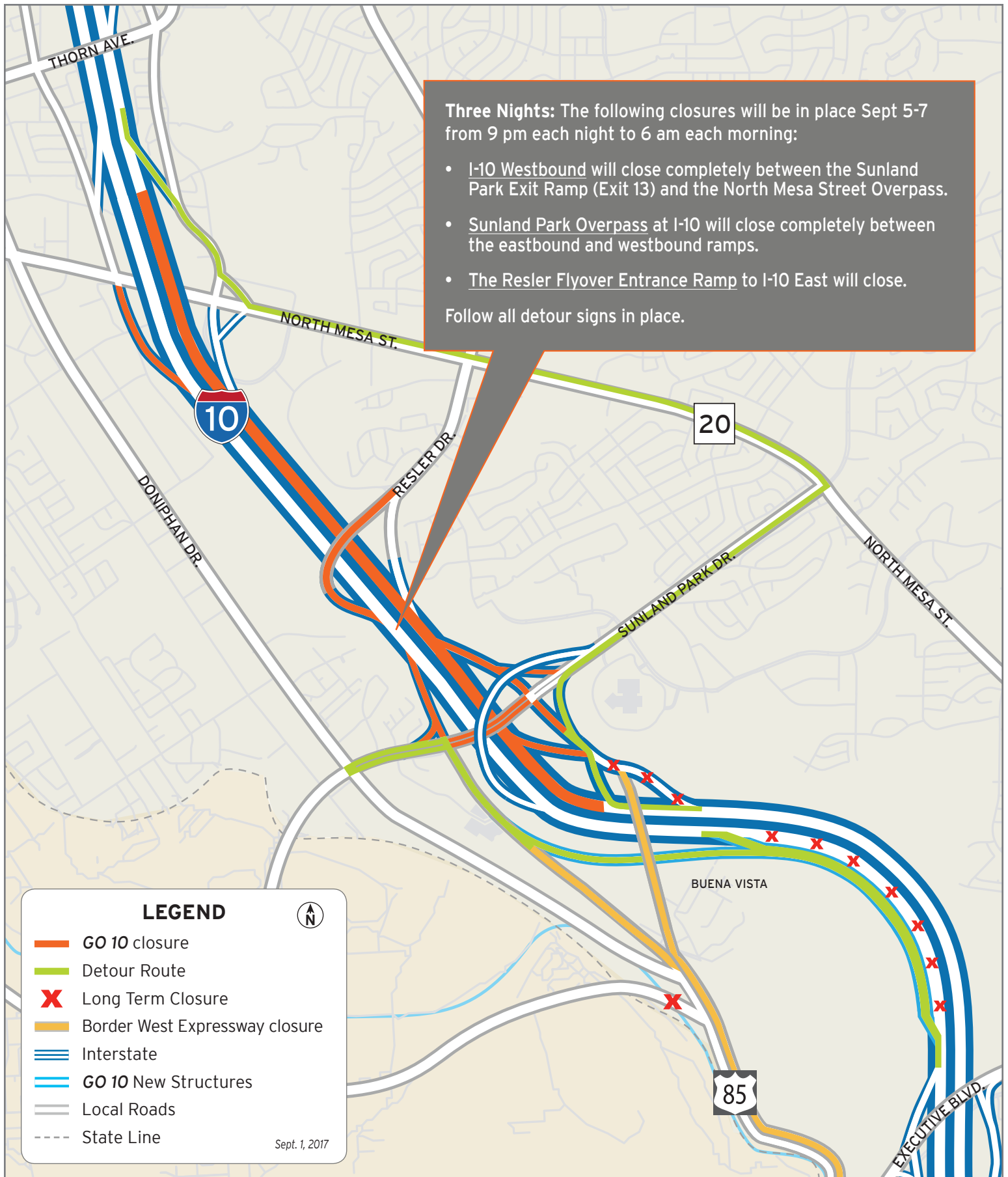
www.go10elpaso.com | facebook.com/go10elpaso | twitter.com/go10ep



Closures on North Mesa Street

Map 1 of 3





I-10 West and ramps close for three nights

Map 2 of 3





27-hour closures on I-10 at Executive

Map 3 of 3

