



**a TxDOT Project**  
For immediate release

## NEWS RELEASE

**EL PASO DISTRICT**

Jennifer Wright  
(915) 790-4340  
Jennifer.Wright3@txdot.gov

March 1, 2019

### **Crews will be finished with pavement work on North Mesa after this Sunday's 27-hour closure.**

When the 27-hour closure lifts, all lanes will be in their final configuration; however, median work on North Mesa will still be required. Proceed through the area with caution.

#### North Mesa

##### **27 HOURS**

Sunday, March 3 at 3 a.m. to Monday, March 4 at 6 a.m.

- All exit ramps and entrance ramps at the I-10/North Mesa interchange will close.
- South Desert Boulevard will close at McClintock Street.
- North Mesa Street (SH 20) will close in both directions between Osborne Drive and Remcon Circle.

**Milestone:** Once this 27-hour closure lifts, lanes on North Mesa Street (SH 20) between Osborne and Remcon will be in their final configuration and driveways to nearby businesses will be restored. [Map 1]

Note: If this work activity is canceled, then it will be re-scheduled for March 10-11.

#### I-10 Westbound

##### **Daytime**

Monday, March 4 and Tuesday, March 5

9 a.m. to 4 p.m. each day

- The right lane on I-10 Westbound will be closed for approximately 1,300 feet starting at approximately mile marker 15 (the Top Golf area). Note: This lane closure will reduce I-10 Westbound from three lanes to two lanes.

Crews will be in the area working on the traffic camera system. [Map 2]

All closures are subject to change or cancellation.

All closure times are approximate.

Exit and entrance ramps may close up to one hour prior to the start time of an I-10 closure.

page 1 of 1

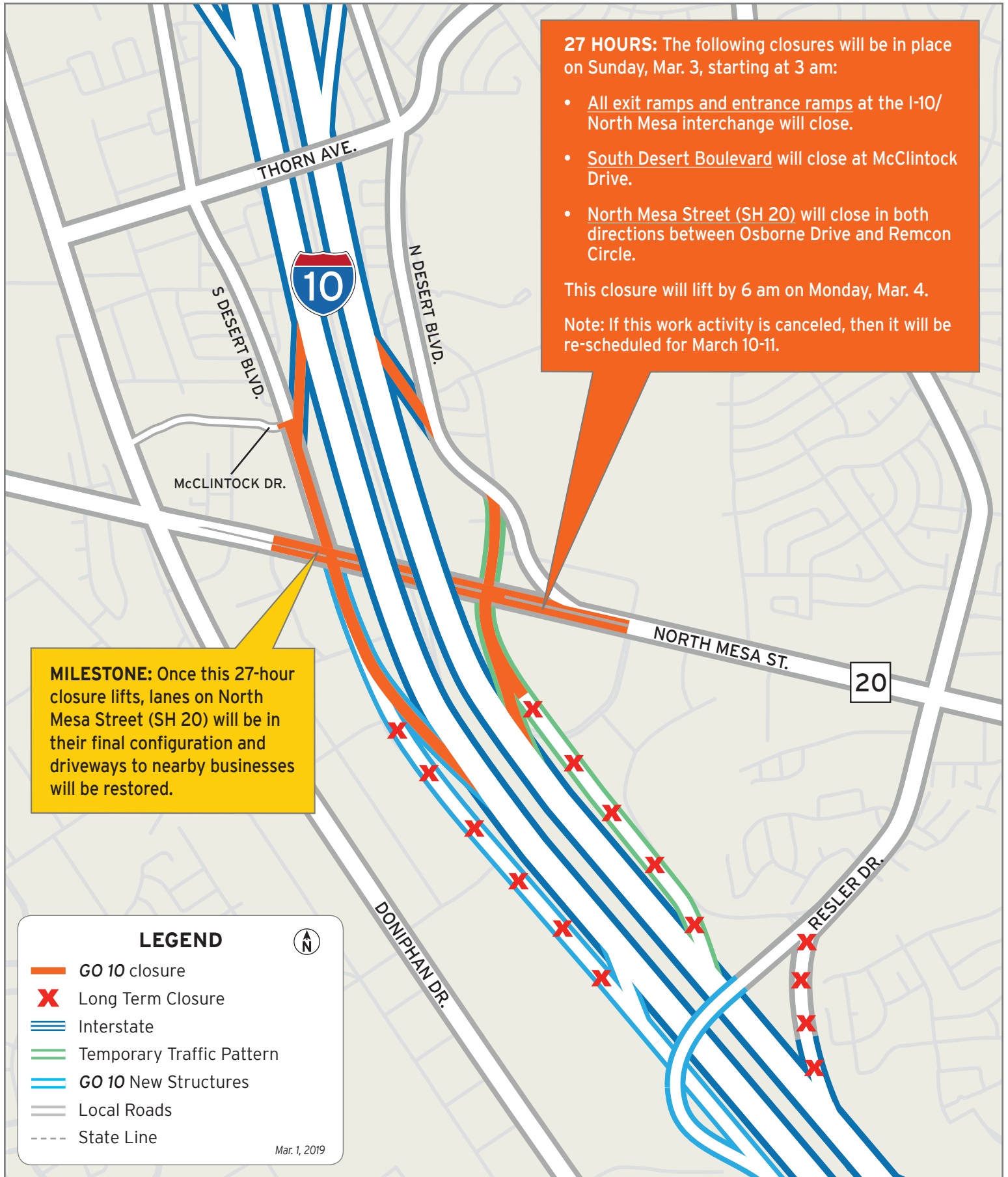


The Texas Department of Transportation is responsible for maintaining 80,000 miles of road and for supporting aviation, rail, and public transportation across the state. GO 10 is a \$158 million reconstruction of Interstate 10 that spans approximately 6 miles on El Paso's West Side between Executive Center Boulevard and North Mesa Street. GO 10 features the addition of collector-distributor lanes and a new direct connector with Border West Expressway.

Maintain a Safe System • Address Congestion • Best-in-Class State Agency • Connect Texas Communities

An Equal Opportunity Employer

[www.go10elpaso.com](http://www.go10elpaso.com) | [facebook.com/go10elpaso](https://facebook.com/go10elpaso) | [twitter.com/go10ep](https://twitter.com/go10ep)




**27 HOURS:** The following closures will be in place on Sunday, Mar. 3, starting at 3 am:








- All exit ramps and entrance ramps at the I-10/ North Mesa interchange will close.
- South Desert Boulevard will close at McClintock Drive.
- North Mesa Street (SH 20) will close in both directions between Osborne Drive and Remcon Circle.

This closure will lift by 6 am on Monday, Mar. 4.

Note: If this work activity is canceled, then it will be re-scheduled for March 10-11.

**MILESTONE:** Once this 27-hour closure lifts, lanes on North Mesa Street (SH 20) will be in their final configuration and driveways to nearby businesses will be restored.

**LEGEND** 

-  GO 10 closure
-  Long Term Closure
-  Interstate
-  Temporary Traffic Pattern
-  GO 10 New Structures
-  Local Roads
-  State Line

Mar. 1, 2019



# 27-hour closure at I-10/North Mesa





# Right lane closure on I-10 Westbound

Map 2 of 2

