



a TxDOT Project
For immediate release

NEWS RELEASE

EL PASO DISTRICT

Jennifer Wright
(915) 790-4340
Jennifer.Wright3@txdot.gov

June 16, 2017

Crews continue work at North Mesa and Sunland Park. Two-Week Outlook: I-10 will close for two nights for work at Resler.

Mesa @ I-10

Daytime

Monday, June 19 through Friday, June 23

9 a.m. to 4 p.m. each day

- The right lane on North Mesa Street (SH 20) – in the direction headed toward Doniphan Drive – will close underneath the I-10 Overpass between North Desert and South Desert boulevards.

Crews will conduct underground sewer line work. [Map 1]

I-10 @ Sunland

Overnight

Wednesday, June 21 and Thursday, June 22

9 p.m. each night to 6 a.m. each morning

- I-10 in both directions will be reduced to one lane between the Sunland Park Exits (Exit 13) and the Sunland Park Entrance Ramps.

Crews will continue building the new Texas turnaround bridges at the Sunland Park Overpass. [Map 2]

Recurring Closure

Daytime

Monday through Friday

9 a.m. to 4 p.m. each day

- The two-lane Sunland Park Exit Ramp (Exit 13, Westbound) will be reduced to one lane.

This closure is necessary to give crews access to the work area. [No Map]

page 1 of 2



The Texas Department of Transportation is responsible for maintaining 80,000 miles of road and for supporting aviation, rail, and public transportation across the state. GO 10 is a \$158 million reconstruction of Interstate 10 that spans approximately 6 miles on El Paso's West Side between Executive Center Boulevard and North Mesa Street. GO 10 features the addition of collector-distributor lanes and a new direct connector with Border West Expressway.

Maintain a Safe System • Address Congestion • Best-in-Class State Agency • Connect Texas Communities

An Equal Opportunity Employer

www.go10elpaso.com | facebook.com/go10elpaso | twitter.com/go10ep



a TxDOT Project
For immediate release

NEWS RELEASE

EL PASO DISTRICT

Jennifer Wright
(915) 790-4340
Jennifer.Wright3@txdot.gov

Two-Week Outlook

Overnight

Wednesday, June 28

9 p.m. to 6 a.m. the next morning

- I-10 Eastbound will **completely** close starting at North Mesa Street (Exit 11). All lanes will open again at the eastbound Sunland Park Entrance Ramp.

Detour: Traffic on I-10 East will exit at North Mesa Street (Exit 11) and take Doniphan Drive to Sunland Park Drive. Drivers may re-enter I-10 East from Sunland Park Drive.

Crews will be working on the Resler Flyover Ramp and on overhead digital message boards. [Map will be provided next week.]

Overnight

Thursday, June 29

9 p.m. to 6 a.m. the next morning

- I-10 Westbound will **completely** close at the Resler Exit Ramp (Exit 12). All lanes will open again at the westbound North Mesa Entrance Ramp.

- The Sunland Entrance Ramp (westbound) will close.

Detour: Traffic on I-10 West will exit at Resler Drive (Exit 12) and take North Mesa Street (SH 20) to the I-10 interchange where drivers may re-enter I-10 West.

Crews will be working on the Resler Flyover Ramp and on overhead digital message boards. [Map will be provided next week.]

All closure start times and end times are approximate.

All closures are subject to change.

The latest information is being posted to the traffic alerts page at go10elpaso.com.

page 2 of 2

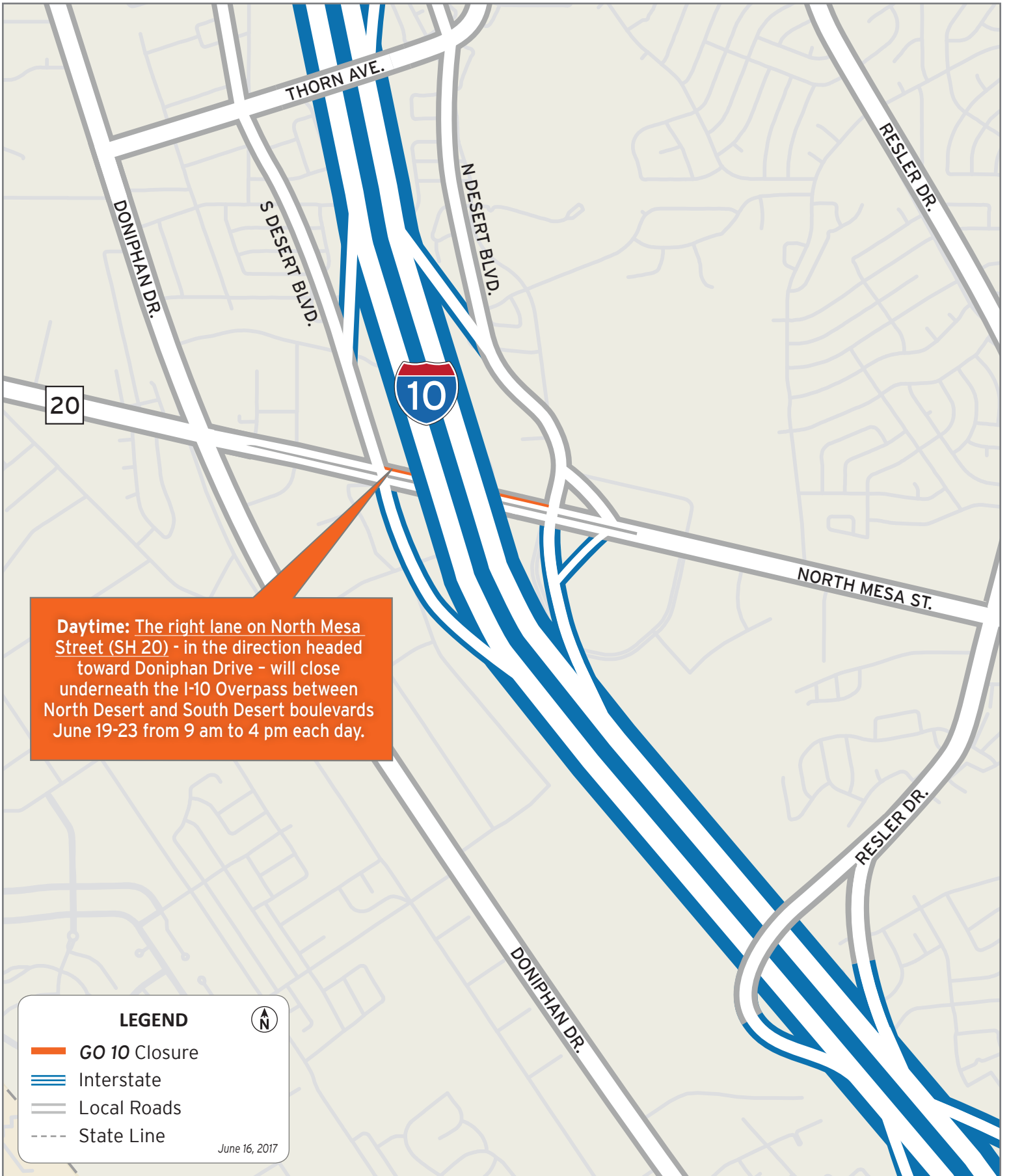


The Texas Department of Transportation is responsible for maintaining 80,000 miles of road and for supporting aviation, rail, and public transportation across the state. GO 10 is a \$158 million reconstruction of Interstate 10 that spans approximately 6 miles on El Paso's West Side between Executive Center Boulevard and North Mesa Street. GO 10 features the addition of collector-distributor lanes and a new direct connector with Border West Expressway.

Maintain a Safe System • Address Congestion • Best-in-Class State Agency • Connect Texas Communities

An Equal Opportunity Employer

www.go10elpaso.com | facebook.com/go10elpaso | twitter.com/go10ep



Lane closed on North Mesa Street

Map 1 of 2





I-10 reduces to 1 lane at Sunland Park

Map 2 of 2

