



# NEWS RELEASE

## EL PASO DISTRICT

Jennifer Wright

(915) 790-4340

Jennifer.Wright3@txdot.gov

### **a TxDOT Project**

For immediate release

September 15, 2017

I-10 East between Mesa and Executive will be reduced to 2 lanes during the day all week. At night, I-10 West at Sunland and I-10 East at Redd will close completely.

#### **Mesa**

**24/7**

This closure is scheduled to open at 4 p.m. Monday, Sept. 18

- The right through-lane on North Mesa Street (SH 20, eastbound) – in the direction moving toward Remcon Circle – will close between Osborne Drive and the I-10 Westbound Exit Ramp.

Crews will be working in shifts around the clock to prepare for placement of beams. [No Map]

#### **I-10 East @ Mesa**

**Daytime**

Monday, Sept. 18 through Friday, Sept 22

9 a.m. to 4 p.m. daily

- The left lane on I-10 Eastbound will close between the North Mesa Entrance Ramp and the Executive Center Overpass.

Two lanes on I-10 East will always remain open. All entrance ramps and exit ramps will be open.

Crews will be cleaning storm drains and breaking illumination foundations. [No Map]

#### **I-10 West @ Sunland**

**Overnight**

Sunday, Sept. 17 through Thursday, Sept. 21

9 p.m. each night to 6 a.m. each morning

- I-10 Westbound will close **completely** between the Sunland Park Exit Ramp and the North Mesa Overpass.

Detour: I-10 Westbound traffic will exit at Sunland Park (Exit 13) to access North Mesa Street (SH 20), then take North Mesa Street (SH 20) to I-10 where traffic may re-enter I-10 West. Follow the detour signs in place.

Specialty crews are conducting pavement work. [Map 1]

page 1 of 3



The Texas Department of Transportation is responsible for maintaining 80,000 miles of road and for supporting aviation, rail, and public transportation across the state. GO 10 is a \$158 million reconstruction of Interstate 10 that spans approximately 6 miles on El Paso's West Side between Executive Center Boulevard and North Mesa Street. GO 10 features the addition of collector-distributor lanes and a new direct connector with Border West Expressway.

Maintain a Safe System • Address Congestion • Best-in-Class State Agency • Connect Texas Communities

An Equal Opportunity Employer

[www.go10elpaso.com](http://www.go10elpaso.com) | [facebook.com/go10elpaso](https://facebook.com/go10elpaso) | [twitter.com/go10ep](https://twitter.com/go10ep)



# NEWS RELEASE

## EL PASO DISTRICT

Jennifer Wright

(915) 790-4340

Jennifer.Wright3@txdot.gov

### a TxDOT Project

For immediate release

#### Overnight

Monday, Sept 18

9 p.m. to 6 a.m. the next morning

- The Sunland Park Entrance Ramp to I-10 West will close.
- The Sunland Park Flyover Entrance Ramp to I-10 East will close.

Crews will be placing bridge deck onto the all-new Sunland Park Flyover Ramp. [Map 1]

#### I-10 East @ Redd



#### Overnight

Monday, Sept. 18 through Thursday, Sept. 21

9 p.m. each night to 6 a.m. each morning

- I-10 Eastbound will close **completely** between the Redd Road Exit (Exit 9) and the Resler Flyover Ramp.
- North Mesa Street (SH 20) at the I-10 Overpass will be closed in both directions.
- The North Mesa Entrance Ramp to I-10 Eastbound will close.

Detour: Traffic on I-10 East will exit at Redd Road (Exit 9), take Redd Road to Doniphan Drive, then take Doniphan Drive to Sunland Park Drive. Traffic may re-enter I-10 East at the Sunland Park Entrance Ramp. Follow the detour signs in place.

Note: For the last two nights of this four-night closure, the detour route may change. Follow the detour signs in place.

Crews will be setting numerous giant beams at the I-10/North Mesa interchange. [Map 2]

ALL CLOSURES ARE SUBJECT TO CHANGE.

All closure times are approximate.

Ramps may close up to 1 hour prior to the start time of an I-10 highway closure.

## LONG-TERM CLOSURE

### Sunland

**24/7** – Until Further Notice

- The far-right lane on the two-lane Sunland Park Exit Ramp (westbound) will be closed 24/7 until further notice. The Sunland Park Westbound Exit Ramp **will be open**.

This closure is necessary to give crews access to the work site. [No Map]

page 2 of 3



The Texas Department of Transportation is responsible for maintaining 80,000 miles of road and for supporting aviation, rail, and public transportation across the state. GO 10 is a \$158 million reconstruction of Interstate 10 that spans approximately 6 miles on El Paso's West Side between Executive Center Boulevard and North Mesa Street. GO 10 features the addition of collector-distributor lanes and a new direct connector with Border West Expressway.

Maintain a Safe System • Address Congestion • Best-in-Class State Agency • Connect Texas Communities

An Equal Opportunity Employer

[www.go10elpaso.com](http://www.go10elpaso.com) | [facebook.com/go10elpaso](https://facebook.com/go10elpaso) | [twitter.com/go10ep](https://twitter.com/go10ep)



**a TxDOT Project**  
For immediate release

## NEWS RELEASE

### EL PASO DISTRICT

Jennifer Wright  
(915) 790-4340  
Jennifer.Wright3@txdot.gov

### CLOSURE FORECAST

The following closures are tentative. Details such as dates and closure limits could change.

#### Overnight

Sunday, Sept. 24 through Tuesday, Sept. 26  
9 p.m. to 6 a.m.

- I-10 Eastbound main lanes will close between the Sunland Park Exit and Entrance Ramps.
  - Sunland Park Overpass closed in both directions.
- Detour: Traffic will exit at Sunland Park (Exit 13) and immediately re-enter I-10 East at the next ramp.

#### Overnight

Monday, Sept. 25  
9 p.m. to 6 a.m.

- The Sunland Park Entrance Ramp to I-10 Westbound will close.
- The Sunland Park Flyover Entrance Ramp to I-10 Eastbound will close.

#### Overnight

Wednesday Sept. 27 through Thursday Sept. 28  
9 p.m. to 6 a.m.

- North Mesa Street (SH 20) at the I-10 Overpass will be closed in both directions

ALL CLOSURES ARE SUBJECT TO CHANGE.

All closure times are approximate.

Ramps may close up to 1 hour prior to the start time of an I-10 highway closure.

page 3 of 3

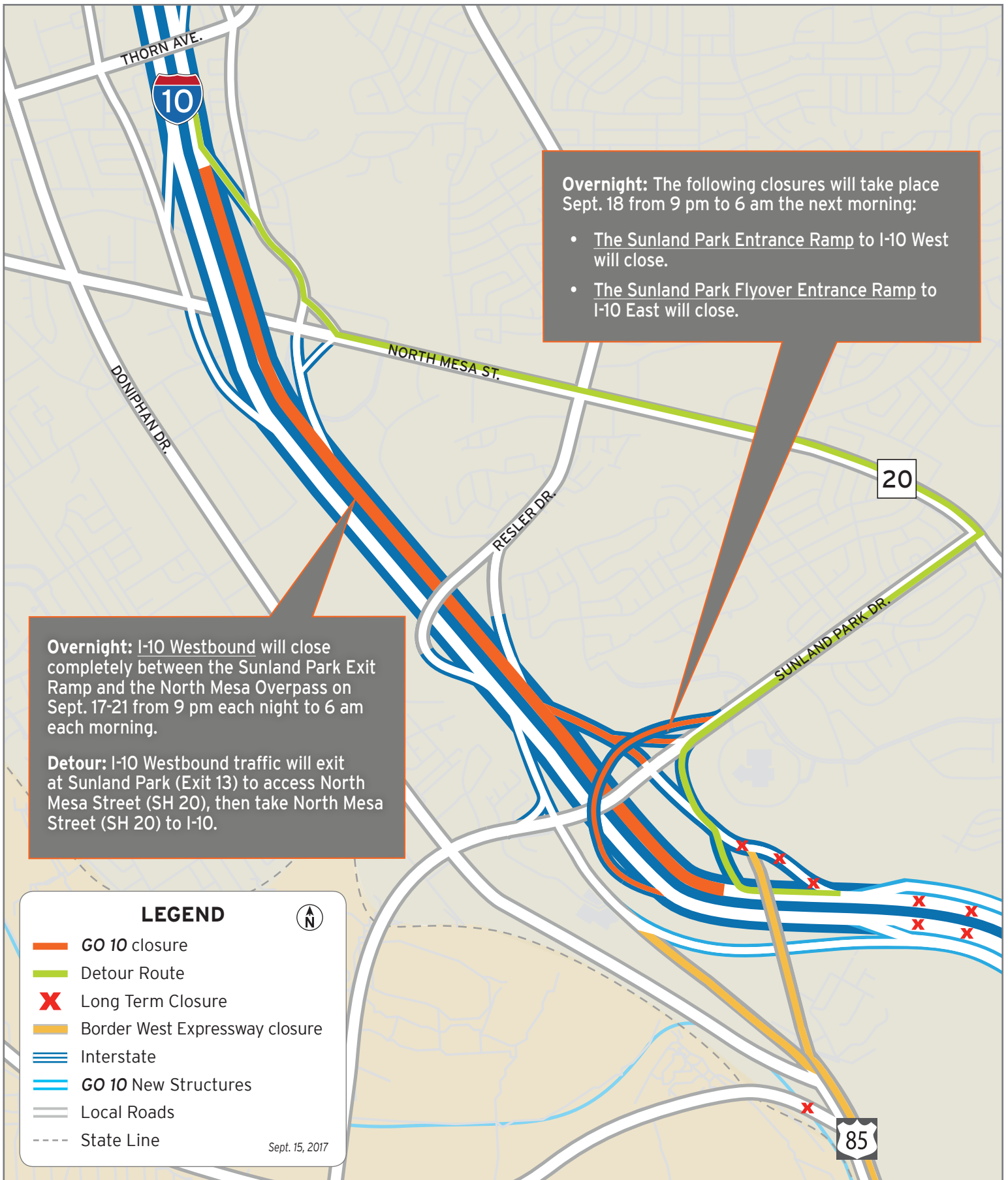


The Texas Department of Transportation is responsible for maintaining 80,000 miles of road and for supporting aviation, rail, and public transportation across the state. GO 10 is a \$158 million reconstruction of Interstate 10 that spans approximately 6 miles on El Paso's West Side between Executive Center Boulevard and North Mesa Street. GO 10 features the addition of collector-distributor lanes and a new direct connector with Border West Expressway.

Maintain a Safe System • Address Congestion • Best-in-Class State Agency • Connect Texas Communities

An Equal Opportunity Employer

[www.go10elpaso.com](http://www.go10elpaso.com) | [facebook.com/go10elpaso](https://facebook.com/go10elpaso) | [twitter.com/go10ep](https://twitter.com/go10ep)



# I-10 West closed at Sunland

Map 1 of 2

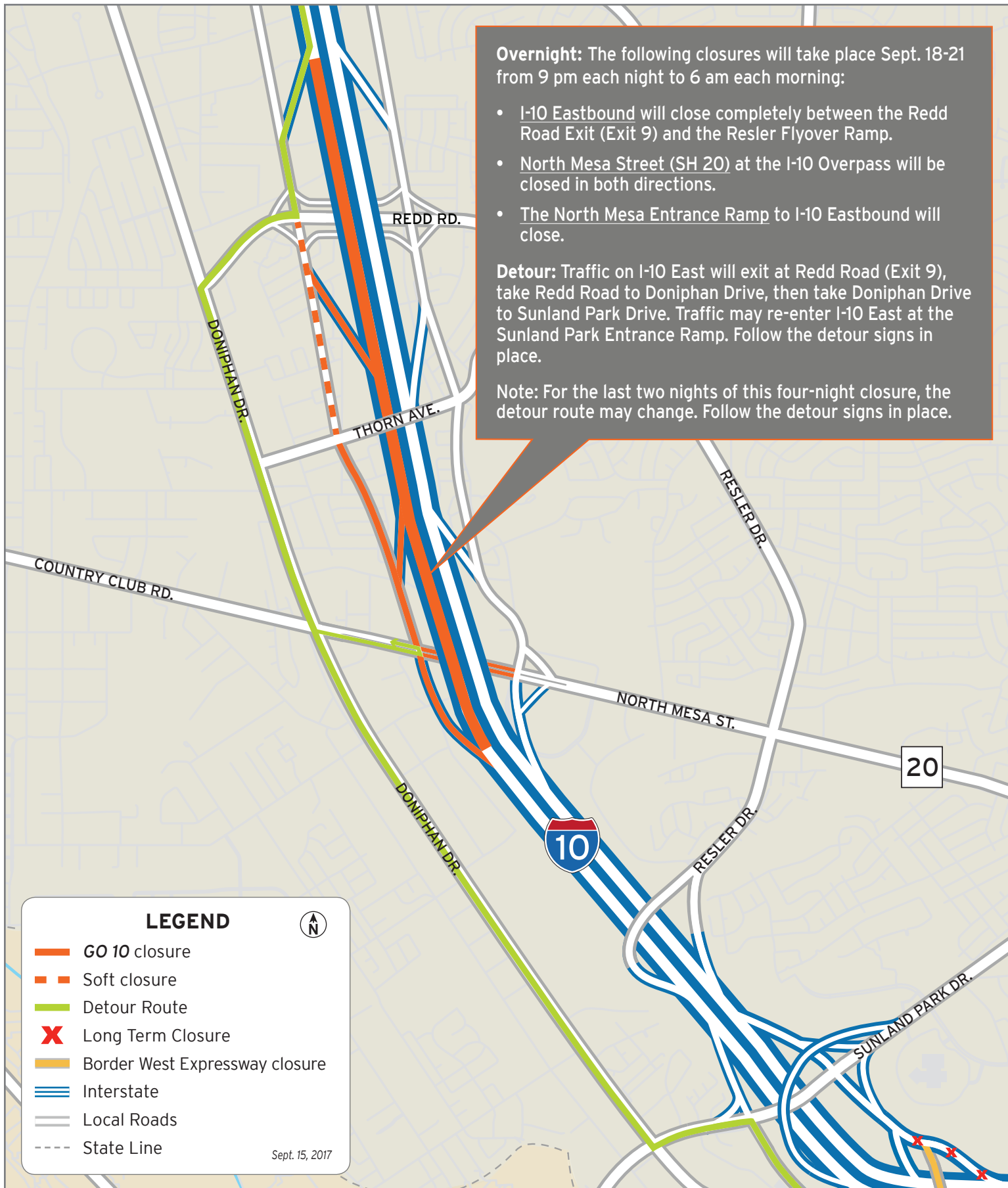


**Overnight:** The following closures will take place Sept. 18-21 from 9 pm each night to 6 am each morning:

- I-10 Eastbound will close completely between the Redd Road Exit (Exit 9) and the Resler Flyover Ramp.
- North Mesa Street (SH 20) at the I-10 Overpass will be closed in both directions.
- The North Mesa Entrance Ramp to I-10 Eastbound will close.

**Detour:** Traffic on I-10 East will exit at Redd Road (Exit 9), take Redd Road to Doniphan Drive, then take Doniphan Drive to Sunland Park Drive. Traffic may re-enter I-10 East at the Sunland Park Entrance Ramp. Follow the detour signs in place.

**Note:** For the last two nights of this four-night closure, the detour route may change. Follow the detour signs in place.



**LEGEND**

- GO 10 closure
- - - Soft closure
- Detour Route
- ✗ Long Term Closure
- Border West Expressway closure
- Interstate
- Local Roads
- - - State Line

Sept. 15, 2017



# Closures on I-10 and Mesa

Map 2 of 2

