



**a TxDOT Project**  
For immediate release

## NEWS RELEASE

**EL PASO DISTRICT**

Jennifer Wright  
(915) 790-4340  
Jennifer.Wright3@txdot.gov

June 15, 2018

### **27-hour closure of I-10 West will impact Father's Day, June 17. Another 27-hour closure of I-10 West is planned for July 1.**

Meanwhile, crews are exploring ways to avoid closing the Resler exit ramp for several weeks. The Resler exit ramp may close sometime this month.

#### **I-10 West at Sunland**

##### **27 HOURS**



Sunday, June 17 (Father's Day)

3 a.m. to 6 a.m. the next morning

- I-10 Westbound closes completely between Sunland Park Drive and North Mesa Street (SH 20). Motorists will be detoured onto North Mesa Street (SH 20).
- North Mesa Street (SH 20) closes completely in both directions between Osborne Drive and Remcon Circle. Follow the detour signs.

**NOTICE:** This 27-hour closure will result in several changes to traffic lane patterns along I-10 Westbound after Resler Drive. Motorists exiting I-10 Westbound at North Mesa (Exit 11) will also notice the signalized intersection at North Mesa Street (SH 20) will be shifted to the left. [Traffic Alert flyer]

#### **I-10 Both Directions at Sunland**

##### **Overnight**

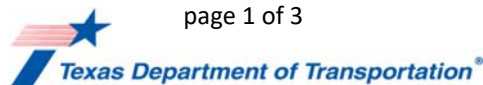
Sunday, June 17

9 p.m. to 6 a.m.

- NOTE: The 27-hour Father's Day closures will be in place during this time.
- I-10 Eastbound will close completely between Sunland Park (Exit 13) and Executive Center Boulevard. Motorists will be detoured onto Doniphan Drive.
- Both Sunland Park entrance ramps to I-10 Eastbound will close.
- Paisano Drive (US 85) will close at Sunland Park Drive.
- Crockett Street access to Paisano Drive (US 85) will close.
- The Resler Drive flyover ramp to I-10 Eastbound will close.

Crews will be building the new Sunland Park Drive center overpass, installing underpass lighting, and painting bridge columns. [Map 2]

page 1 of 3



The Texas Department of Transportation is responsible for maintaining 80,000 miles of road and for supporting aviation, rail, and public transportation across the state. GO 10 is a \$158 million reconstruction of Interstate 10 that spans approximately 6 miles on El Paso's West Side between Executive Center Boulevard and North Mesa Street. GO 10 features the addition of collector-distributor lanes and a new direct connector with Border West Expressway.

Maintain a Safe System • Address Congestion • Best-in-Class State Agency • Connect Texas Communities

An Equal Opportunity Employer

[www.go10elpaso.com](http://www.go10elpaso.com) | [facebook.com/go10elpaso](https://facebook.com/go10elpaso) | [twitter.com/go10ep](https://twitter.com/go10ep)



**a TxDOT Project**  
For immediate release

# NEWS RELEASE

## EL PASO DISTRICT

Jennifer Wright  
(915) 790-4340  
Jennifer.Wright3@txdot.gov

### I-10 East at Sunland

#### Overnight

Monday, June 18 through Thursday, June 21

9 p.m. each night to 6 a.m. each morning

- I-10 Eastbound will close completely between Sunland Park (Exit 13) and Executive Center Boulevard. Motorists will be detoured onto Doniphan Drive.
- Both Sunland Park entrance ramps to I-10 Eastbound will close.
- Paisano Drive (US 85) will close at Sunland Park Drive.
- Crockett Street access to Paisano Drive (US 85) will close.
- The Resler Drive flyover ramp to I-10 Eastbound will close.

Crews will be building the new Sunland Park Drive center overpass, installing underpass lighting, and painting bridge columns. [Map 3]

### I-10 West at Mesa

#### 27 HOURS



Sunday, July 1

3 a.m. to 6 a.m. the next day

- I-10 Westbound will close completely at North Mesa Street (Exit 11). Motorists will exit at North Mesa (Exit 11) and follow the frontage to re-enter I-10 at the next entrance ramp.
- North Mesa Street (SH 20) will close completely in both directions under the I-10 overpass. All entrance ramps to I-10 from North Mesa Street will be open. Follow the detour signs.
- NOTE: Crews could open North Mesa Street (SH 20) as early as 4 p.m. on July 1.

Crews will be placing bridge deck panels and pouring concrete onto the new I-10 Westbound overpass.

**Curing Time:** For several hours during this closure, it may seem as though no work is taking place; but in fact, the freshly poured concrete will be curing (aka drying and hardening).

### Advance Notice

The following closures are still developing. Details, such as dates, may change.

#### 27 HOURS

Sunday, July 8

3 a.m. to 6 a.m. the next day

page 2 of 3



The Texas Department of Transportation is responsible for maintaining 80,000 miles of road and for supporting aviation, rail, and public transportation across the state. GO 10 is a \$158 million reconstruction of Interstate 10 that spans approximately 6 miles on El Paso's West Side between Executive Center Boulevard and North Mesa Street. GO 10 features the addition of collector-distributor lanes and a new direct connector with Border West Expressway.

Maintain a Safe System • Address Congestion • Best-in-Class State Agency • Connect Texas Communities

An Equal Opportunity Employer

[www.go10elpaso.com](http://www.go10elpaso.com) | [facebook.com/go10elpaso](https://facebook.com/go10elpaso) | [twitter.com/go10ep](https://twitter.com/go10ep)



## **a TxDOT Project**

*For immediate release*

# NEWS RELEASE

## EL PASO DISTRICT

Jennifer Wright

(915) 790-4340

Jennifer.Wright3@txdot.gov

- I-10 Westbound will close completely at North Mesa Street (Exit 11).
- North Mesa Street (SH 20) will close completely in both directions under the I-10 overpass.
- Note: Crews could open North Mesa Street (SH 20) as early as 4 p.m. on July 7.

### **Overnight**

Monday, July 9 through Thursday, July 12

9 p.m. to 6 a.m.

- I-10 Eastbound will close completely at North Mesa (Exit 11). Motorists will be detoured onto Doniphan Drive and will be able to re-enter I-10 Eastbound from Sunland Park Drive.
- I-10 Westbound will close completely at Sunland Park (Exit 13). Motorists will be detoured onto North Mesa Street (SH 20) to the North Mesa entrance ramp to I-10 Westbound.
- The Sunland Park Drive overpass will close completely in both directions.

Crews will be setting bridge girders for the new Sunland Park Drive center overpass.

page 3 of 3

All closures are subject to change.

All closure times are approximate.

Exit and entrance ramps may close up to one hour prior to the start time of an I-10 closure.

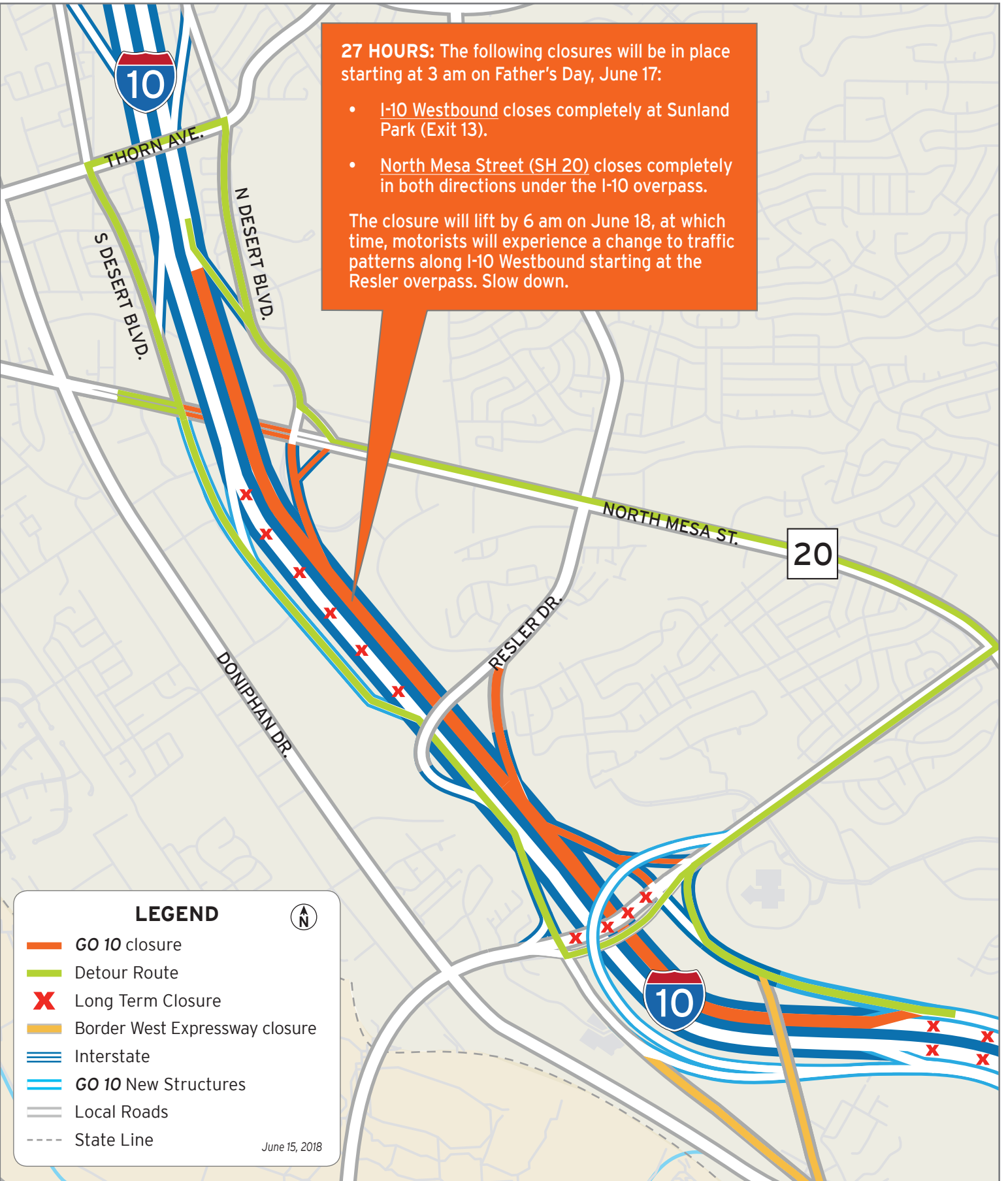


The Texas Department of Transportation is responsible for maintaining 80,000 miles of road and for supporting aviation, rail, and public transportation across the state. GO 10 is a \$158 million reconstruction of Interstate 10 that spans approximately 6 miles on El Paso's West Side between Executive Center Boulevard and North Mesa Street. GO 10 features the addition of collector-distributor lanes and a new direct connector with Border West Expressway.

Maintain a Safe System • Address Congestion • Best-in-Class State Agency • Connect Texas Communities

*An Equal Opportunity Employer*

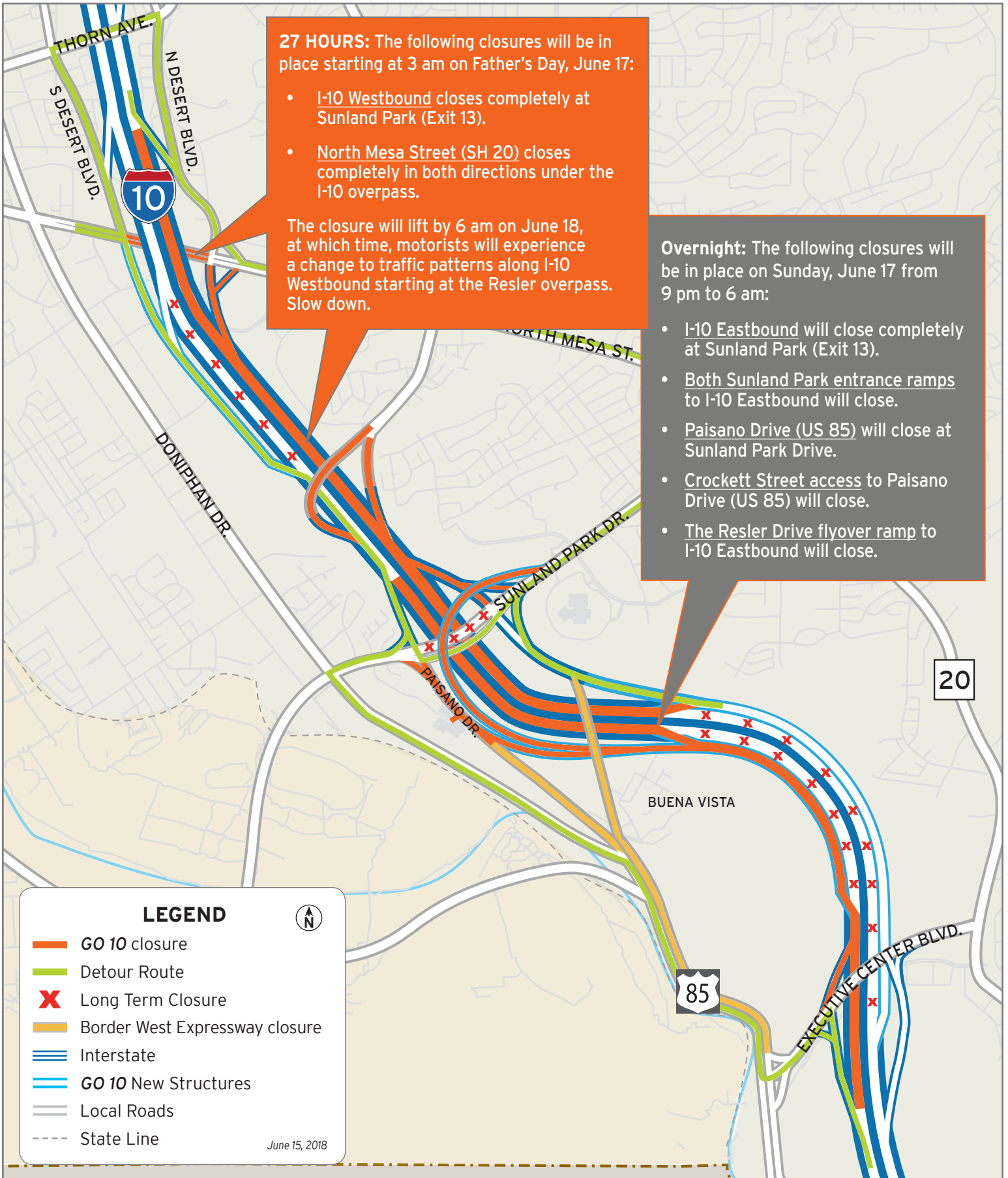
[www.go10elpaso.com](http://www.go10elpaso.com) | [facebook.com/go10elpaso](https://facebook.com/go10elpaso) | [twitter.com/go10ep](https://twitter.com/go10ep)



# 27-hour closure of I-10 Westbound

Map 1 of 3





# I-10 both directions on night of Father's Day

Map 2 of 3



