



# NEWS RELEASE

## EL PASO DISTRICT

Jennifer Wright  
(915) 790-4340

Jennifer.Wright3@txdot.gov

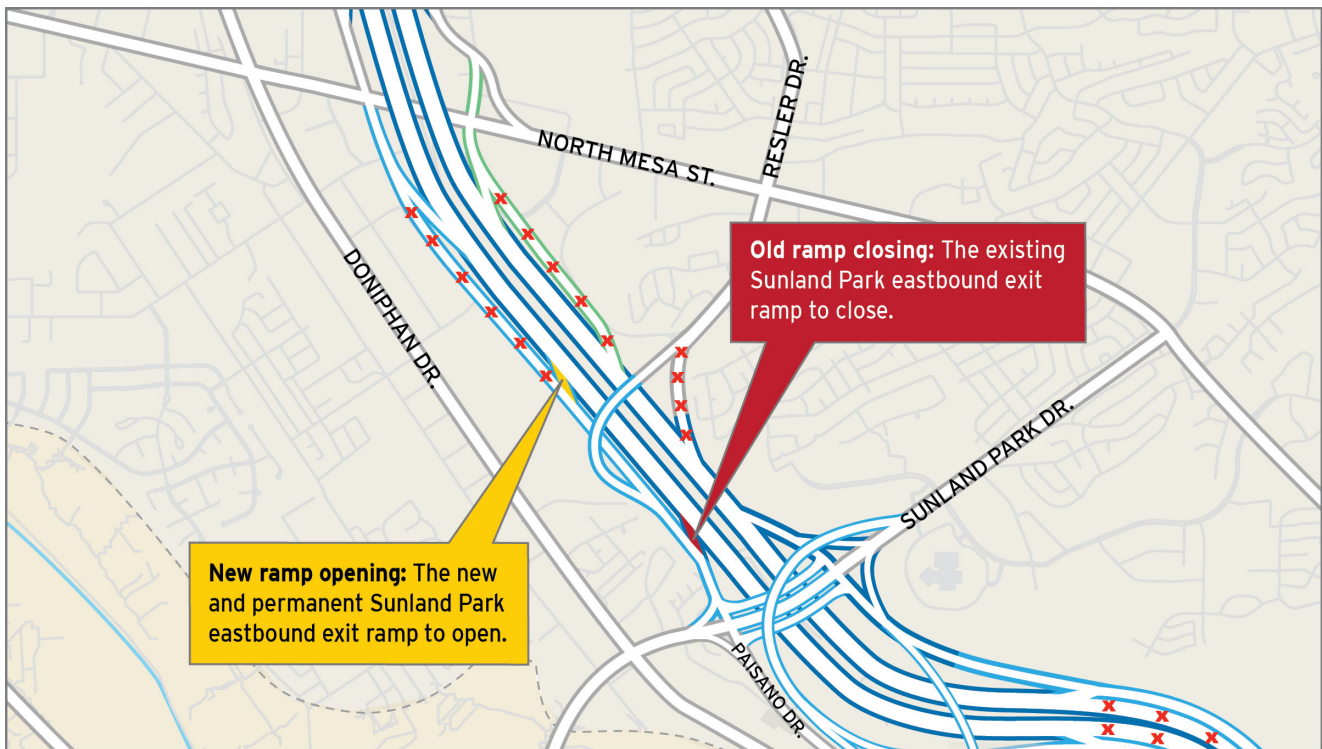
### a TxDOT Project

For immediate release

February 15, 2019

## Crews set to open the new and permanent Sunland Park eastbound exit ramp.

Motorists can expect Sunday, Feb. 17 to be when crews relocate the eastbound Sunland Park exit ramp (Exit 13). Motorists should pay attention to overhead exit signs once the change is in place because the new and permanent Sunland Park exit ramp (Exit 13) will be accessible from I-10 Eastbound prior to reaching Resler, as illustrated.



Note: All closures and operations are subject to change or cancelation.

page 1 of 3



The Texas Department of Transportation is responsible for maintaining 80,000 miles of road and for supporting aviation, rail, and public transportation across the state. GO 10 is a \$158 million reconstruction of Interstate 10 that spans approximately 6 miles on El Paso's West Side between Executive Center Boulevard and North Mesa Street. GO 10 features the addition of collector-distributor lanes and a new direct connector with Border West Expressway.

Maintain a Safe System • Address Congestion • Best-in-Class State Agency • Connect Texas Communities

An Equal Opportunity Employer

[www.go10elpaso.com](http://www.go10elpaso.com) | [facebook.com/go10elpaso](https://facebook.com/go10elpaso) | [twitter.com/go10ep](https://twitter.com/go10ep)



**a TxDOT Project**  
For immediate release

# NEWS RELEASE

**EL PASO DISTRICT**

Jennifer Wright  
(915) 790-4340  
Jennifer.Wright3@txdot.gov

## Scheduled closures and outcomes for the week:

### I-10 East at North Mesa

#### 27 Hours

Sunday, February 17, starting at 3 a.m. to Monday, February 18 at 6 a.m.

- I-10 Eastbound will close completely between North Mesa (Exit 11) and the Sunland Park overpass.
- The North Mesa entrance ramp to I-10 Eastbound will close.
- The Resler flyover entrance ramp to I-10 Eastbound will close.

Detour: Motorists on I-10 Eastbound will exit at North Mesa (Exit 11), follow North Mesa Street to Doniphan Drive, then follow Doniphan Drive to Sunland Park Drive. Motorists may re-enter I-10 Eastbound using the Sunland Park entrance ramp.

**Milestone at Sunland Park:** Crews will be closing the existing Sunland Park eastbound exit ramp (Exit 13) and opening the new and permanent Sunland Park eastbound exit ramp (Exit 13). [Map 1]

### I-10 Both Directions

#### Overnight

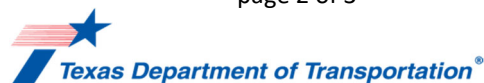
Wednesday, February 20 and Thursday, February 21

9 p.m. each night to 6 p.m. each morning

- I-10 Westbound will close completely between Executive Center (Exit 16) and Sunland Park. Detour: Motorists will exit at Executive Center (Exit 13). Follow the detour signs.
- I-10 Eastbound will close completely between the Sunland Park (Exit 13) and Executive Center. Detour: Motorists will exit at Sunland Park (Exit 13), follow Sunland Park Drive to North Mesa Street (SH 20), then follow North Mesa Street (SH 20) to Executive Center Blvd. Motorists may re-enter I-10 Eastbound using the Executive Center entrance ramp.
- Both Sunland Park entrance ramps to I-10 Eastbound will close.
- Paisano Drive will close at Sunland Park Drive.
- Crockett Street access to Paisano Drive will close.
- The Schuster/UTEP entrance ramp to I-10 Westbound will close.

Crews will be pouring concrete barrier in the median of I-10. [No Map]

page 2 of 3



The Texas Department of Transportation is responsible for maintaining 80,000 miles of road and for supporting aviation, rail, and public transportation across the state. GO 10 is a \$158 million reconstruction of Interstate 10 that spans approximately 6 miles on El Paso's West Side between Executive Center Boulevard and North Mesa Street. GO 10 features the addition of collector-distributor lanes and a new direct connector with Border West Expressway.

Maintain a Safe System • Address Congestion • Best-in-Class State Agency • Connect Texas Communities

An Equal Opportunity Employer

[www.go10elpaso.com](http://www.go10elpaso.com) | [facebook.com/go10elpaso](https://facebook.com/go10elpaso) | [twitter.com/go10ep](https://twitter.com/go10ep)



**a TxDOT Project**  
For immediate release

## NEWS RELEASE

### EL PASO DISTRICT

Jennifer Wright  
(915) 790-4340  
Jennifer.Wright3@txdot.gov

#### I-10 East at Sunland

##### 27 HOURS

Sunday, February 24 at 3 a.m. to Monday, February 25 at 6 a.m.

- I-10 Eastbound will close completely between the Sunland Park exit ramp (Exit 13) and the Sunland Park entrance ramp.
- The North Mesa entrance ramp to I-10 Eastbound will close.

Detour: Motorists on I-10 Eastbound will exit at Sunland Park (Exit 13) and immediately re-enter I-10 Eastbound at the Sunland Park entrance ramp.

Crews will be conducting work on the I-10 Eastbound median shoulder. [No Map]

The following closures are still developing, meaning details such as dates may change.

#### North Mesa

##### 27 HOURS

Sunday, March 3 at 3 a.m. to Monday, March 4 at 6 a.m.

- All exit ramps and entrance ramps the I-10/North Mesa interchange will close.
- South Desert Boulevard will close at McClintock Street.
- North Mesa Street (SH 20) will close in both directions between Osborne Drive and Remcon Circle.

**Milestone on North Mesa:** Crews are nearly finished with pavement upgrades on North Mesa Street (SH 20) between Osborne Drive and Remcon Circle. Once this 27-hour closure lifts, lanes should be in their final configuration and driveways to nearby businesses will be restored. [No Map]

Note: If this work activity is canceled, then it will be re-scheduled for March 10-11.

All closures are subject to change or cancellation.

All closure times are approximate.

Exit and entrance ramps may close up to one hour prior to the start time of an I-10 closure.

page 3 of 3

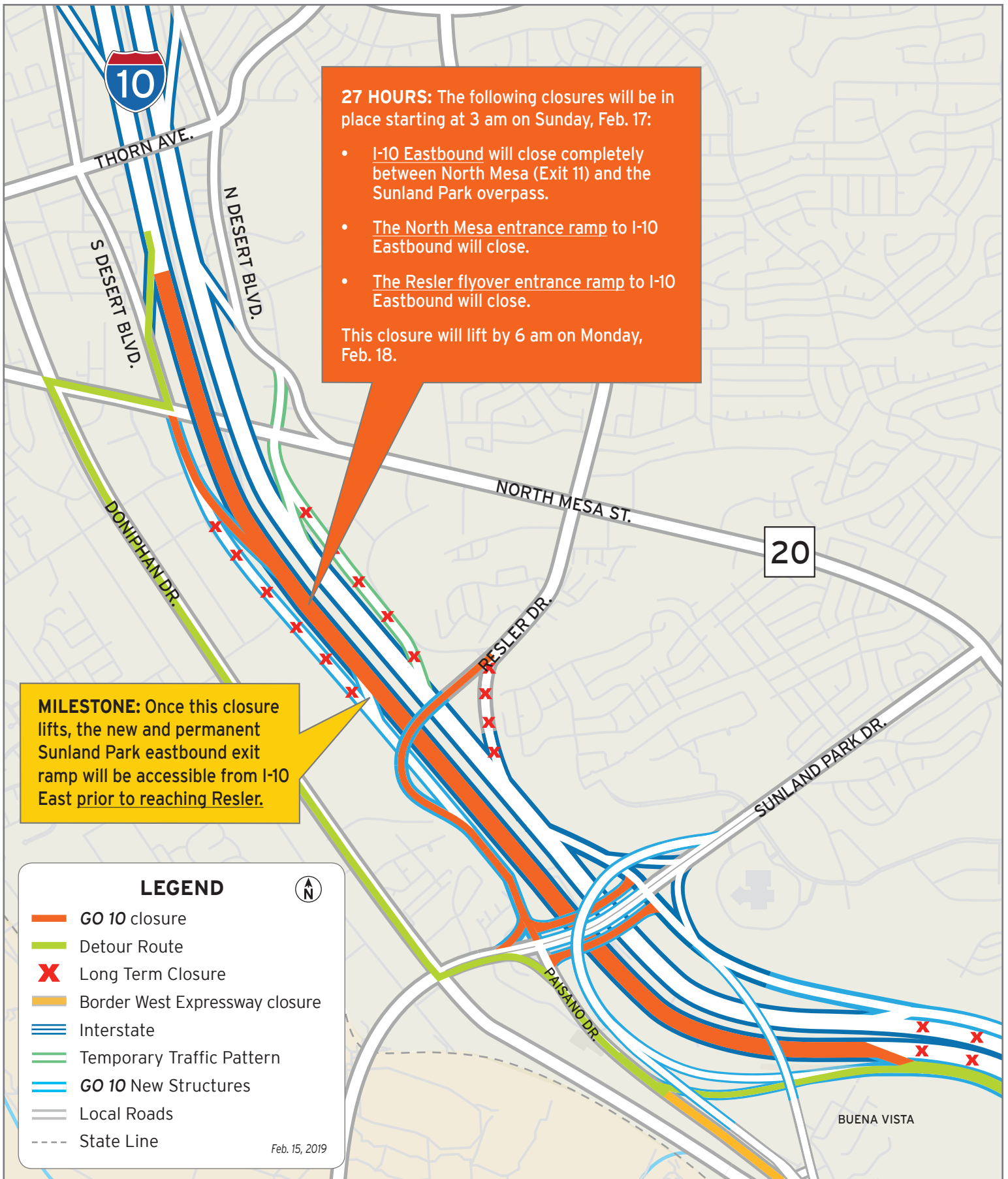


The Texas Department of Transportation is responsible for maintaining 80,000 miles of road and for supporting aviation, rail, and public transportation across the state. GO 10 is a \$158 million reconstruction of Interstate 10 that spans approximately 6 miles on El Paso's West Side between Executive Center Boulevard and North Mesa Street. GO 10 features the addition of collector-distributor lanes and a new direct connector with Border West Expressway.

Maintain a Safe System • Address Congestion • Best-in-Class State Agency • Connect Texas Communities

An Equal Opportunity Employer

[www.go10elpaso.com](http://www.go10elpaso.com) | [facebook.com/go10elpaso](https://facebook.com/go10elpaso) | [twitter.com/go10ep](https://twitter.com/go10ep)



# I-10 East closes for 27 hours

Map 1 of 1

