



a TxDOT Project
For immediate release

NEWS RELEASE

EL PASO DISTRICT

Jennifer Wright
(915) 790-4340
Jennifer.Wright3@txdot.gov

Dec. 15, 2017

Closures next week mostly happening overnight No closures scheduled Dec. 23-Jan. 1

I-10 East @ Mesa

Overnight

Sunday, Dec. 17
9 p.m. to 6 a.m.

- I-10 Eastbound will be reduced to one lane between Thorn Avenue and the North Mesa Street overpass.
- The North Mesa Street exit ramp (Exit 11) from I-10 Eastbound will close.
- The Redd Road entrance ramp to I-10 Eastbound will close.

Detour: Motorists who wish to enter I-10 Eastbound from Redd Road should stay on South Desert Blvd. frontage road and enter using the North Mesa Street (SH 20) eastbound entrance ramp. Motorists wishing to exit I-10 Eastbound at North Mesa Street (Exit 11) should use an alternate exit ramp. Watch for detour signage.

Crews will be re-striping and opening the new North Mesa Street exit ramp. [No Map]

North Mesa

Daytime

Monday, Dec. 18 through Friday, Dec. 22
9 a.m. to 4 p.m. daily

- The right lane on North Mesa Street (SH 20) will close between North Desert Blvd. and Osborne Drive.

Crews will be building new roadways that connect to North Mesa Street (SH 20). [No Map]

South Desert

Overnight

Monday, Dec. 18 through Thursday, Dec. 21
9 p.m. each night to 6 a.m. each morning

- South Desert Boulevard will close between McClintock Drive and North Mesa Street (SH 20).
- The North Mesa Street exit ramp (Exit 11) from I-10 Eastbound will close.

Detour: Traffic on South Desert Boulevard coming from Thorn Avenue will be detoured at McClintock Drive to Doniphan Drive. Follow the detour signs. Motorists on I-10 Eastbound who wish to exit at North Mesa Street should use an alternate exit ramp. Follow the detour signs.

Crews will be removing and installing a large drainage pipe in the area. [Map 1]

page 1 of 3



The Texas Department of Transportation is responsible for maintaining 80,000 miles of road and for supporting aviation, rail, and public transportation across the state. GO 10 is a \$158 million reconstruction of Interstate 10 that spans approximately 6 miles on El Paso's West Side between Executive Center Boulevard and North Mesa Street. GO 10 features the addition of collector-distributor lanes and a new direct connector with Border West Expressway.

Maintain a Safe System • Address Congestion • Best-in-Class State Agency • Connect Texas Communities

An Equal Opportunity Employer

www.go10elpaso.com | facebook.com/go10elpaso | twitter.com/go10ep



a TxDOT Project
For immediate release

NEWS RELEASE

EL PASO DISTRICT

Jennifer Wright
(915) 790-4340
Jennifer.Wright3@txdot.gov

I-10 East @ Sunland

Overnight

Wednesday, Dec. 20

9 p.m. to 6 a.m.

- The right lane on I-10 Eastbound will close between the Sunland Park Drive overpass and Buena Vista (mile marker 14).
- The Paisano Drive entrance ramp (in front of the auto dealerships) to I-10 Eastbound will close.

Detour: Motorists who wish to enter I-10 Eastbound from Paisano Drive should use an alternate entrance ramp. Follow the detour signs.

Crews will be pouring concrete and installing a utility pole. [No Map]

I-10 West @ Executive

Overnight

Wednesday, Dec. 20

9 p.m. to 6 a.m.

- I-10 Westbound will be reduced to one lane between Executive Center Blvd. and Sunland Park Drive.

Crews will be adjusting barrier walls. [No Map]

CLOSURE FORECAST

The following closures are still developing. Details such as dates and closure limits could change.

Overnight

Tuesday, Jan. 2

9 p.m. to 6 a.m.

- I-10 Eastbound will close **completely** at Sunland Park Drive (Exit 13).
- The Sunland Park flyover entrance ramp to I-10 Eastbound will close.

Detour: Motorists on I-10 Eastbound will exit at Sunland Park Drive and immediately re-enter I-10 Eastbound at the next ramp. Follow the detour signs.

Crews will be conducting bridgework.

page 2 of 3



The Texas Department of Transportation is responsible for maintaining 80,000 miles of road and for supporting aviation, rail, and public transportation across the state. GO 10 is a \$158 million reconstruction of Interstate 10 that spans approximately 6 miles on El Paso's West Side between Executive Center Boulevard and North Mesa Street. GO 10 features the addition of collector-distributor lanes and a new direct connector with Border West Expressway.

Maintain a Safe System • Address Congestion • Best-in-Class State Agency • Connect Texas Communities

An Equal Opportunity Employer

www.go10elpaso.com | facebook.com/go10elpaso | twitter.com/go10ep



a TxDOT Project
For immediate release

NEWS RELEASE

EL PASO DISTRICT

Jennifer Wright
(915) 790-4340
Jennifer.Wright3@txdot.gov

Overnight

Wednesday, Jan. 3

9 p.m. to 6 a.m.

- I-10 in both directions will close **completely** at the Sunland Park Drive exits (Exit 13).

Detour: Motorists on I-10 will exit at Sunland Park Drive and immediately re-enter I-10 at the next ramp.

Follow the detour signs.

Crews will be conducting bridgework.

Overnight

Thursday, Jan. 4

9 p.m. to 6 a.m.

- I-10 Westbound will close **completely** at Executive Center Boulevard (Exit 16).
- Paisano Drive entrance ramp to I-10 Eastbound will close.
- The Schuster/UTEP entrance ramp to I-10 Westbound will close.

Detour: Motorists on I-10 Westbound will exit at Executive Center Boulevard (Exit 16) and take North Mesa Street (SH 20) to Sunland Park Drive, where motorists may re-enter I-10 Westbound.

Overnight

Sunday, Jan. 7 through Thursday, Jan. 11

9 p.m. each night to 6 a.m. each morning

- North Mesa Street (SH 20) will close **completely** in both directions under the I-10 overpass.

Crews will be conducting bridgework.

All closures are subject to change.

All closure times are approximate.

Exit and entrance ramps may close up to one hour prior to the start time of an I-10 highway closure.

page 3 of 3

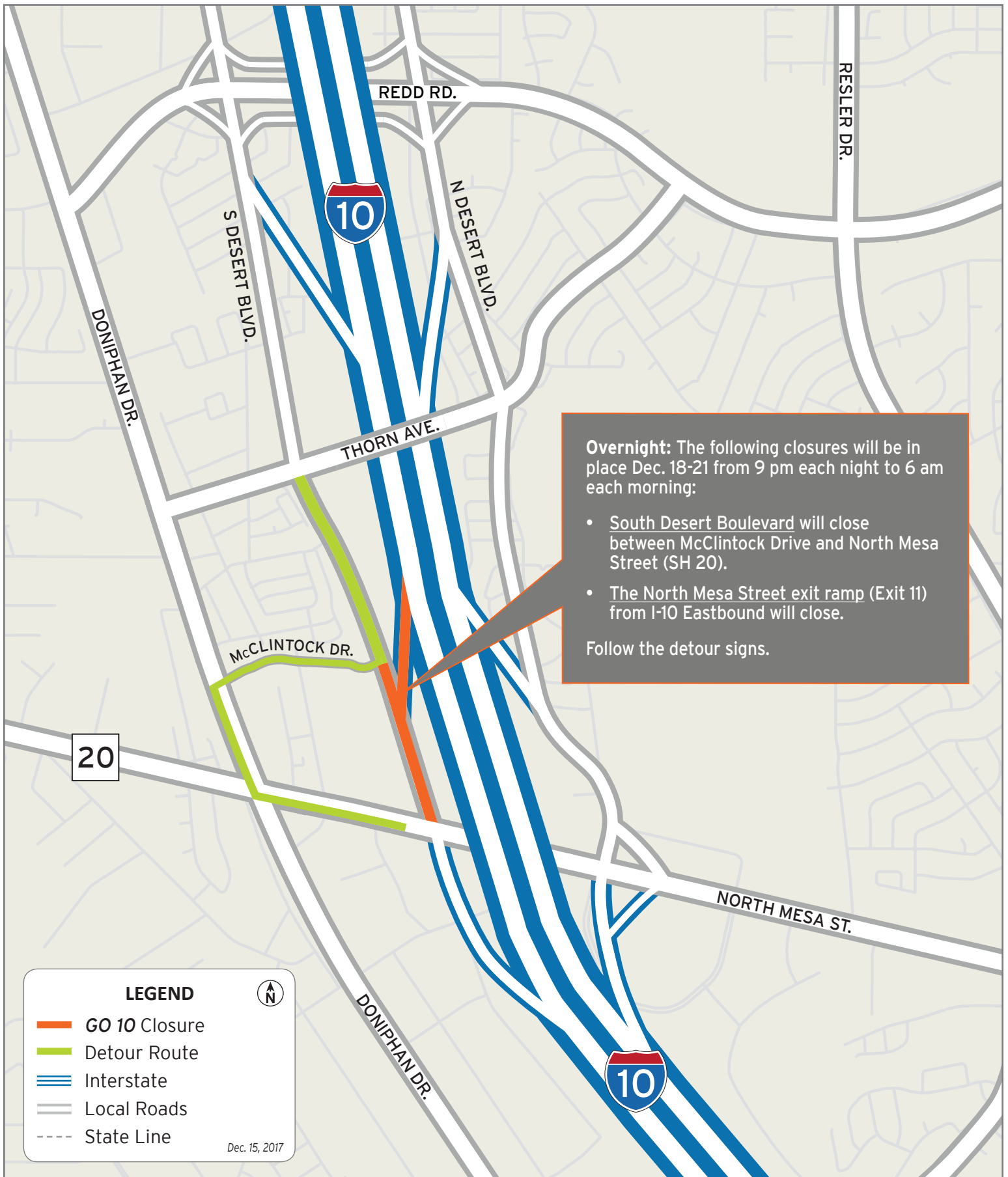


The Texas Department of Transportation is responsible for maintaining 80,000 miles of road and for supporting aviation, rail, and public transportation across the state. GO 10 is a \$158 million reconstruction of Interstate 10 that spans approximately 6 miles on El Paso's West Side between Executive Center Boulevard and North Mesa Street. GO 10 features the addition of collector-distributor lanes and a new direct connector with Border West Expressway.

Maintain a Safe System • Address Congestion • Best-in-Class State Agency • Connect Texas Communities

An Equal Opportunity Employer

www.go10elpaso.com | facebook.com/go10elpaso | twitter.com/go10ep



South Desert Blvd closed at McClintock

Map 1 of 1

