



**a TxDOT Project**  
For immediate release

## NEWS RELEASE

**EL PASO DISTRICT**

Jennifer Wright  
(915) 790-4340  
Jennifer.Wright3@txdot.gov

April 14, 2017

### **I-10 East and North Mesa will close completely for three nights.**

The three-night closure is flagged on page 2.

#### **I-10 & Sunland**

##### **Overnight**

Monday, April 17 through Wednesday, April 19

9 p.m. each night to 6 a.m. each morning

- The Sunland Park Flyover Entrance Ramp to I-10 Eastbound will close.

Crews are conducting prep work for the eventual removal of the Sunland Park Flyover Ramp. [No Map]

##### **Daytime**

Tuesday, April 18 through Friday, April 21

9 a.m. to 4 p.m. each day

- The two-lane Sunland Park Exit Ramp (Exit 13, Westbound) will reduce to one lane.

This closure is necessary to give crews access to the work site. [No Map]

##### **Daytime**

Tuesday, April 18 through Friday, April 21

9 a.m. to 4 p.m. each day

- The left lane on I-10 in both directions will close between Sunland Park and Buena Vista.

Crews are constructing new US 85 bridge columns in the area. Thank you for your patience. [Map 2]

##### **Overnight**

Tuesday, April 18 and Wednesday, April 19

9 p.m. each night to 6 a.m. each morning

- The right lane of Sunland Park Dr. (headed north toward the mountain) will close between Constitution Dr. and South Mesa Hills Dr.
- I-10 Westbound will be reduced to one lane between Buena Vista and the Sunland Park Entrance Ramp to I-10 Westbound.

Crews are conducting prep work for the eventual removal of the Sunland Park Flyover Ramp. [Map 3]

page 1 of 2



The Texas Department of Transportation is responsible for maintaining 80,000 miles of road and for supporting aviation, rail, and public transportation across the state. GO 10 is a \$158 million reconstruction of Interstate 10 that spans approximately 6 miles on El Paso's West Side between Executive Center Boulevard and North Mesa Street. GO 10 features the addition of collector-distributor lanes and a new direct connector with Border West Expressway.

Maintain a Safe System • Address Congestion • Best-in-Class State Agency • Connect Texas Communities

An Equal Opportunity Employer

[www.go10elpaso.com](http://www.go10elpaso.com) | [facebook.com/go10elpaso](https://facebook.com/go10elpaso) | [twitter.com/go10ep](https://twitter.com/go10ep)



**a TxDOT Project**  
For immediate release


## NEWS RELEASE

### EL PASO DISTRICT

Jennifer Wright  
(915) 790-4340  
Jennifer.Wright3@txdot.gov

#### I-10 & Mesa

##### Overnight

 Tuesday, April 18 through Thursday, April 20  
9 p.m. each night to 6 a.m. each morning

- North Mesa St. (SH 20) in both directions will close completely at the I-10 Overpass.
- I-10 Eastbound entrance ramps and exit ramps for North Mesa St. (Exit 11) will close.
- South Desert Blvd. frontage road will close between Thorn Ave. and North Mesa St.

Detour: Vehicles will exit at Redd Rd. (Exit 9), take Redd Rd. to Doniphan Dr. (SH 20), and take Doniphan Dr. (SH 20) to Sunland Park Dr. Drivers can re-enter I-10 East from Sunland Park Dr.

These closures are necessary while crews haul dirt. [Map 1]

#### I-10 West

##### Overnight

Monday, April 17 through Wednesday, April 19  
9 p.m. each night to 6 a.m. each morning

- I-10 Westbound will be reduced to one lane between Buena Vista and Sunland Park.

Crews will re-stripe I-10 West to accommodate construction of US 85 bridge columns in the area. Drivers should stay alert through these changes to lane geometry. [No Map]

All closure start times and end times are approximate.

All closures are subject to change.

The latest information may be found on the traffic alerts page at [go10elpaso.com](http://go10elpaso.com).

page 2 of 2

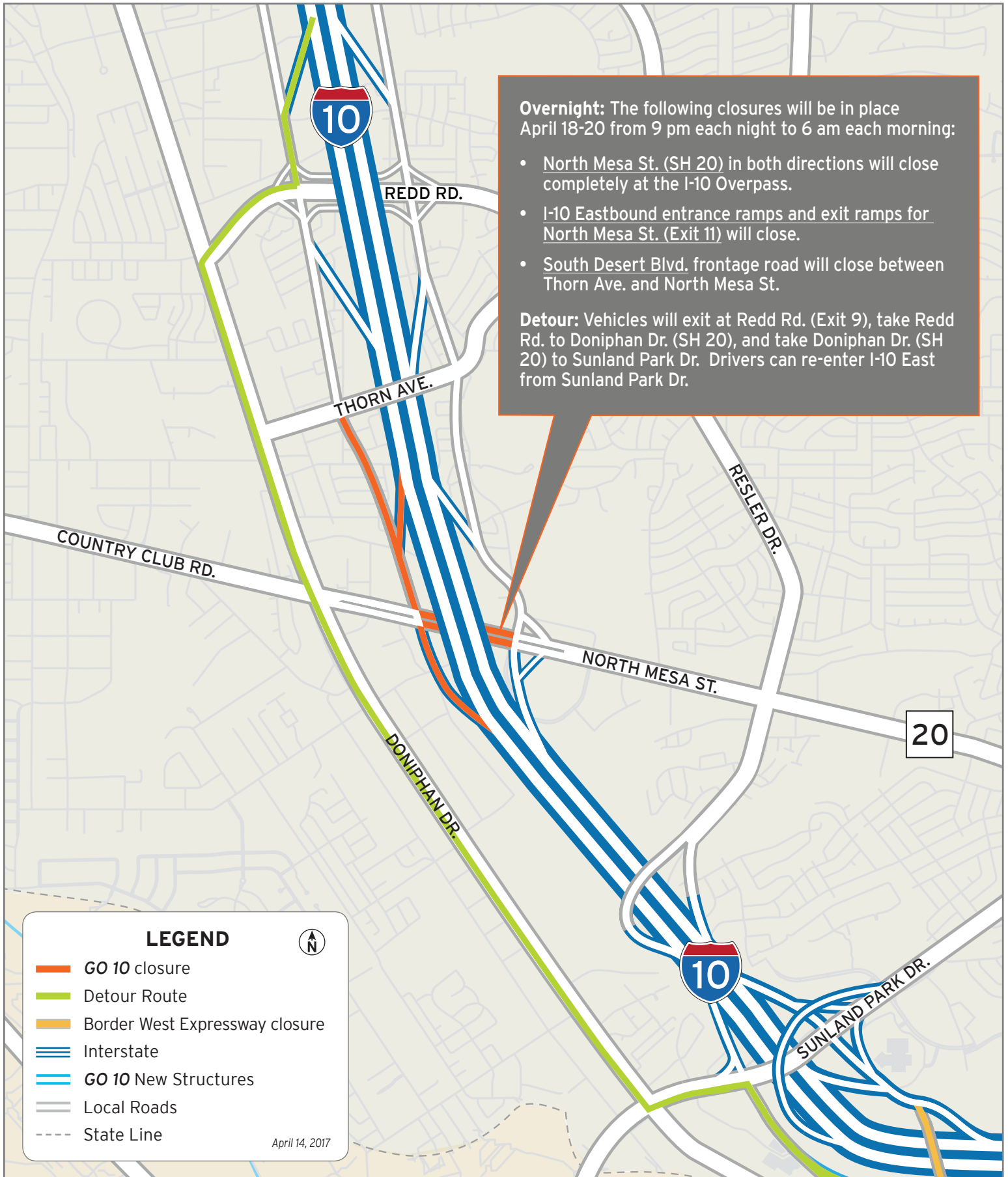


The Texas Department of Transportation is responsible for maintaining 80,000 miles of road and for supporting aviation, rail, and public transportation across the state. GO 10 is a \$158 million reconstruction of Interstate 10 that spans approximately 6 miles on El Paso's West Side between Executive Center Boulevard and North Mesa Street. GO 10 features the addition of collector-distributor lanes and a new direct connector with Border West Expressway.

Maintain a Safe System • Address Congestion • Best-in-Class State Agency • Connect Texas Communities

An Equal Opportunity Employer

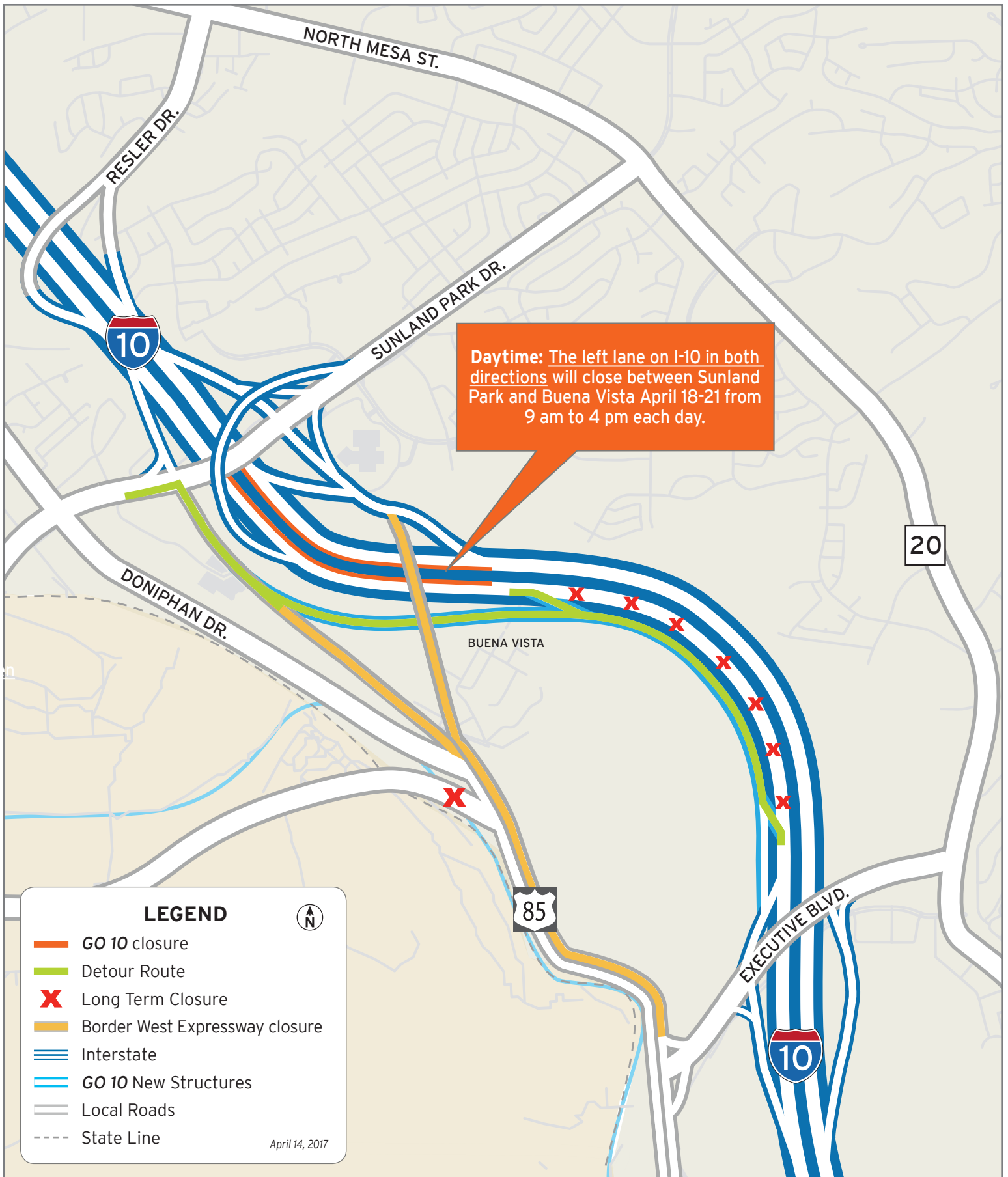
[www.go10elpaso.com](http://www.go10elpaso.com) | [facebook.com/go10elpaso](https://facebook.com/go10elpaso) | [twitter.com/go10ep](https://twitter.com/go10ep)



# Closures on I-10 and Mesa

Map 1 of 3

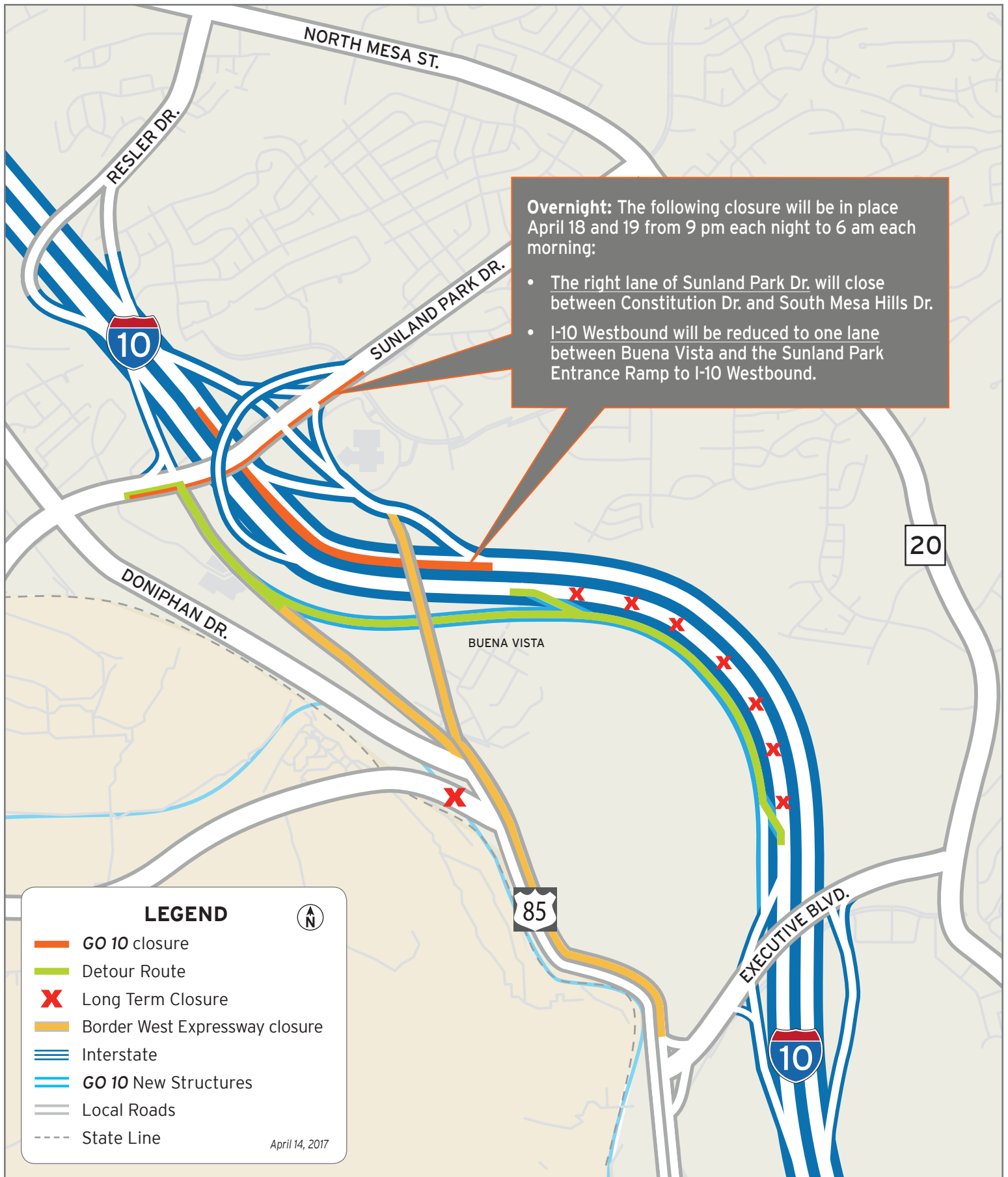




# Closures on I-10

Map 2 of 3





# Closures on I-10 and Sunland

Map 3 of 3

