



NEWS RELEASE

EL PASO DISTRICT

Jennifer Wright

(915) 790-4340

Jennifer.Wright3@txdot.gov

a TxDOT Project

For immediate release

October 13, 2017

Sunland Overpass and Mesa Underpass will close at night. Resler Flyover Ramp will close for five days starting Oct. 24 and 27-hour closure of I-10 West is set for Sunday, Oct. 29.

Sunland Park

Overnight

Sunday, Oct. 15

9 p.m. to 6 a.m.

- The Sunland Park Entrance Ramp to I-10 Westbound will close.
Detour: Motorists should use an alternate entrance ramp to I-10 Westbound. Detour signs will be in place.
Crews are gearing up to build the new westbound entrance ramp. [No Map]

Daytime

Monday, Oct. 16

9 a.m. to 4 p.m.

- Sunland Park Drive will be reduced to one lane – traveling in the direction toward Doniphan Drive – between the entry point to access the Sunland Flyover Entrance Ramp (approximately in front of Men's Warehouse) and I-10.
Crews will be setting barrier and preparing the area for pavement widening. [Map 1]

I-10 @ Sunland

Overnight

Tuesday, Oct. 17

9 p.m. to 6 a.m. the next morning

- I-10 Eastbound will close **completely** between the Sunland Park Exit Ramp (Exit 13) and the Sunland Park Entrance Ramp.
- I-10 Westbound will be reduced to one lane between the Sunland Park Exit Ramp (Exit 13) and the Sunland Park Entrance Ramp.
- The Sunland Park Overpass will close **completely** over I-10.
- The Sunland Park Flyover Ramp to I-10 Eastbound will close.

Detour: Eastbound traffic on I-10 will exit at Sunland Park (Exit 13) and immediately re-enter at the next entrance ramp. Traffic on Sunland Park Drive should follow the detour signs in place.

Crews will be pouring bridge deck onto the new Sunland Park Flyover Ramp. [Map 2]

page 1 of 3



The Texas Department of Transportation is responsible for maintaining 80,000 miles of road and for supporting aviation, rail, and public transportation across the state. GO 10 is a \$158 million reconstruction of Interstate 10 that spans approximately 6 miles on El Paso's West Side between Executive Center Boulevard and North Mesa Street. GO 10 features the addition of collector-distributor lanes and a new direct connector with Border West Expressway.

Maintain a Safe System • Address Congestion • Best-in-Class State Agency • Connect Texas Communities

An Equal Opportunity Employer

www.go10elpaso.com | facebook.com/go10elpaso | twitter.com/go10ep



NEWS RELEASE

EL PASO DISTRICT

Jennifer Wright

(915) 790-4340

Jennifer.Wright3@txdot.gov

a TxDOT Project

For immediate release

Overnight

Wednesday, Oct. 18

9 p.m. to 6 a.m. the next morning

- The Sunland Park Entrance Ramp (in front of the Shamaley dealership) to I-10 Eastbound will close.

Note: Crockett Street access to the Sunland Park Entrance Ramp will be open.

Detour: Drivers who want to enter I-10 Eastbound from Sunland Park Drive may use the Sunland Park Flyover Entrance Ramp. Follow the detour signs in place.

Crews are moving heavy materials into the area for the new Sunland Park Flyover Ramp. [No Map]

North Mesa

Overnight



Monday, Oct. 16 through Thursday, Oct. 19 (excluding Tuesday, Oct. 17)

9 p.m. each night to 6 a.m. each morning

- North Mesa Street (SH 20) will close in both directions under the I-10 Overpass.

Follow the detour signs in place.

Crews are placing bridge deck panels on the new I-10 Eastbound Overpass. [No Map]

I-10 East @ Executive

Overnight

Monday, Oct. 16 through Wednesday, Oct. 18

9 p.m. each night to 6 a.m. each morning

- The left lane on I-10 Eastbound will close between Executive Center Boulevard and the Asarco Bridge.
- The shoulder on I-10 Westbound will close between the Asarco Bridge and Executive Center Boulevard.

Crews will be working on utilities. [No Map]

I-10 and Resler

CONTINUOUS, FIVE DAYS



9 p.m. Tuesday, Oct. 24 through to 6 a.m. to Monday Oct. 30

- The Resler Flyover Entrance Ramp to I-10 Eastbound will be closed.

Crews will be preparing the new Resler Flyover Ramp for an Oct. 30th opening.

27 HOURS



Sunday, Oct. 29

3 a.m. to 6 a.m. the next morning

- I-10 Westbound will close completely at the Resler Exit Ramp.

page 2 of 3



The Texas Department of Transportation is responsible for maintaining 80,000 miles of road and for supporting aviation, rail, and public transportation across the state. GO 10 is a \$158 million reconstruction of Interstate 10 that spans approximately 6 miles on El Paso's West Side between Executive Center Boulevard and North Mesa Street. GO 10 features the addition of collector-distributor lanes and a new direct connector with Border West Expressway.

Maintain a Safe System • Address Congestion • Best-in-Class State Agency • Connect Texas Communities

An Equal Opportunity Employer

www.go10elpaso.com | facebook.com/go10elpaso | twitter.com/go10ep



NEWS RELEASE

EL PASO DISTRICT

Jennifer Wright

(915) 790-4340

Jennifer.Wright3@txdot.gov

a TxDOT Project

For immediate release

- The left lane on I-10 Eastbound will close at Sunland Park. Crews are planning to demolish half of the old Resler Flyover Ramp. Traffic may be driving on the all-new Resler Flyover Ramp by the morning of Oct. 30.

All closures are subject to change.

Closure times are approximate.

Ramps may close up to one hour prior to the start time of an I-10 highway closure.

CLOSURE FORECAST

The following closures are tentative. Details such as dates and closure limits could change.

27 HOURS



Sunday, Nov. 5

3 a.m. to 6 a.m. the next morning

- I-10 Eastbound will close completely at North Mesa Street.
- The left lane on I-10 Westbound will close at Sunland Park.
- The Resler Flyover Entrance Ramp to I-10 Eastbound will close.

Crews plan to finish demolishing the remaining half of the old Resler Flyover Ramp.

Overnight

Tuesday, Oct. 24 through Thursday, Oct. 26

9 p.m. each night to 6 a.m. each morning

- The Sunland Park Entrance Ramp to I-10 Eastbound (in front of the Shamaley dealership) will close. Access to the ramp from Crockett Street will be open.

27 HOURS

Sunday, November – date(s) to be determined

3 a.m. to 6 a.m. the next morning

- I-10 Eastbound will close completely at Redd Road (Exit 9).
- North Mesa Street (SH 20) will close in both directions under the I-10 Overpass.

Crews will be pouring bridge deck for the new I-10 Eastbound Overpass at North Mesa.

All closures are subject to change.

All closure times are approximate.

Ramps may close up to one hour prior to the start time of an I-10 highway closure.

page 3 of 3

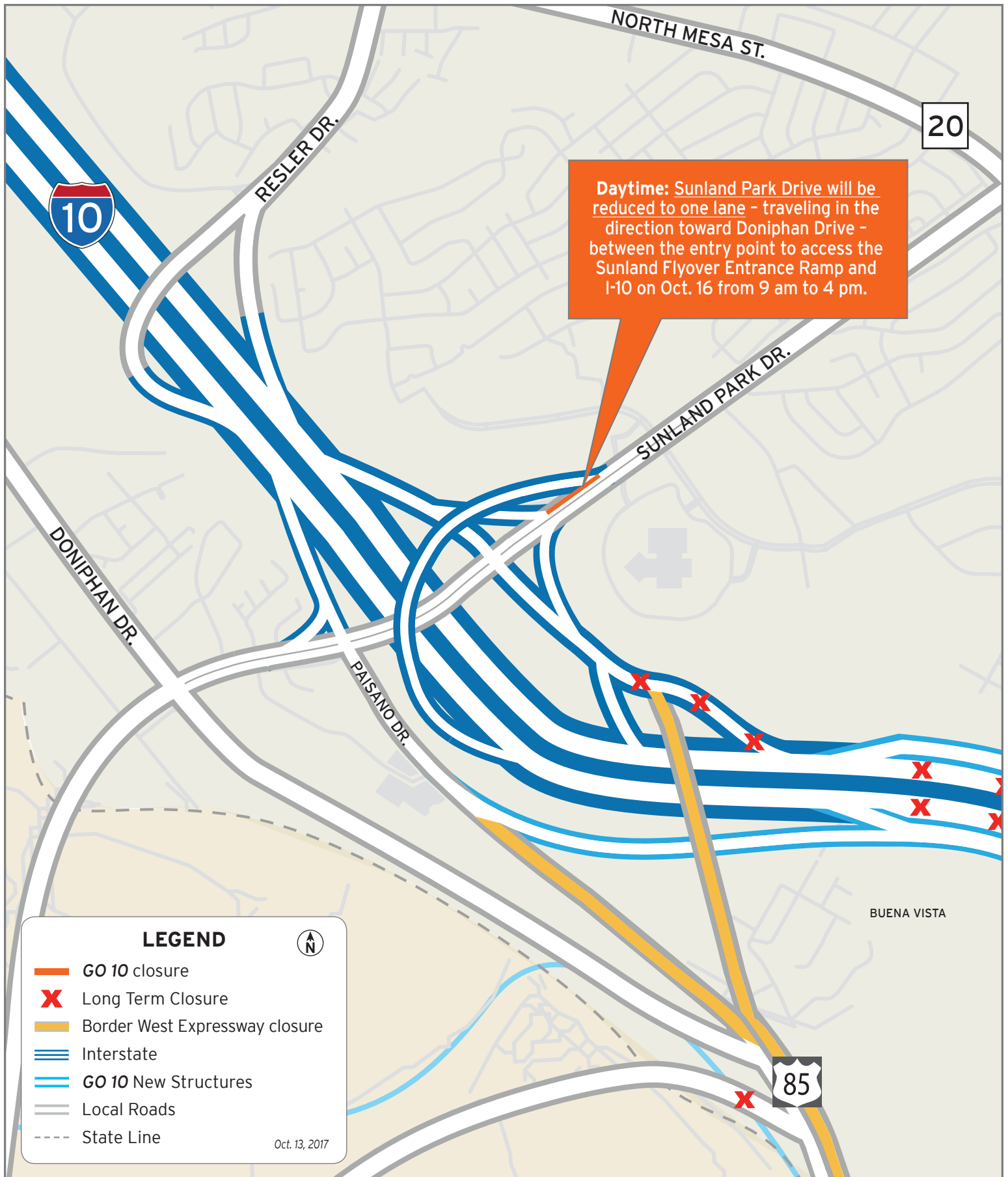


The Texas Department of Transportation is responsible for maintaining 80,000 miles of road and for supporting aviation, rail, and public transportation across the state. GO 10 is a \$158 million reconstruction of Interstate 10 that spans approximately 6 miles on El Paso's West Side between Executive Center Boulevard and North Mesa Street. GO 10 features the addition of collector-distributor lanes and a new direct connector with Border West Expressway.

Maintain a Safe System • Address Congestion • Best-in-Class State Agency • Connect Texas Communities

An Equal Opportunity Employer

www.go10elpaso.com | facebook.com/go10elpaso | twitter.com/go10ep



Sunland Park Drive reduced to one lane

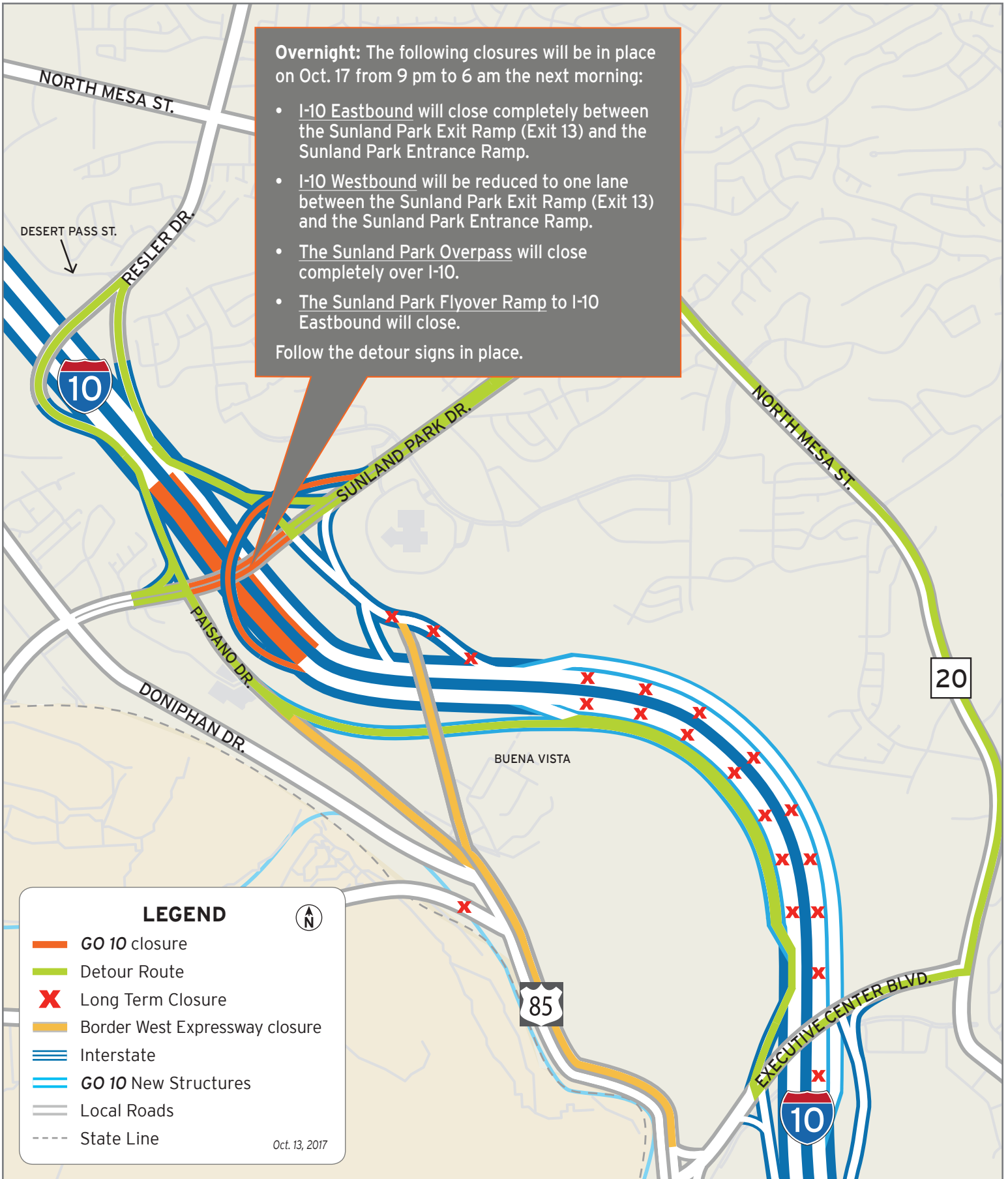
Map 1 of 2



Overnight: The following closures will be in place on Oct. 17 from 9 pm to 6 am the next morning:

- I-10 Eastbound will close completely between the Sunland Park Exit Ramp (Exit 13) and the Sunland Park Entrance Ramp.
- I-10 Westbound will be reduced to one lane between the Sunland Park Exit Ramp (Exit 13) and the Sunland Park Entrance Ramp.
- The Sunland Park Overpass will close completely over I-10.
- The Sunland Park Flyover Ramp to I-10 Eastbound will close.

Follow the detour signs in place.



Oct. 13, 2017



Closures on I-10 and Sunland Park

Map 2 of 2

