



a TxDOT Project
For immediate release

NEWS RELEASE

EL PASO DISTRICT


Jennifer Wright
(915) 790-4340
Jennifer.Wright3@txdot.gov

March 10, 2017

**Crews will demolish the I-10 East Overpass at North Mesa this Sunday.
Avoid the area or follow the detour signs in place.**

I-10 & Mesa

27 Hours

 The following closures will go into effect starting at 3 a.m. Sunday, March 12 and will re-open at 6 a.m. on Monday, March 13:

- I-10 Eastbound will be **completely closed** after Redd Road.
Detour: Traffic on I-10 East will detour at the Redd Road Exit (Exit 9) and onto Doniphan Drive (SH 20). Traffic will be able to re-enter I-10 East from Sunland Park Drive. Follow the detour signs in place. [Map 1]
- North Mesa Street (SH 20) in both directions will be **completely closed** at the I-10 Overpass.
Detour: Follow the detour signs in place. [Map 1]
- South Desert Boulevard frontage road will be **closed to through-traffic** between Redd Road and Thorn Avenue, and **completely closed** to all traffic after Thorn Avenue.
Detour: Traffic will detour onto Doniphan Drive (SH 20). Follow the detour signs in place. [Map 1]

Motorists should avoid the intersection on March 12 by using [alternate routes](#) such as Transmountain Road (Loop 375), Doniphan Drive (SH 20) and Paisano Drive (US 85). Motorists who cannot avoid the intersection should follow the detour signs in place. [Map 1]

During this 27-hour closure on Sunday, March 12, crews will be re-striping I-10 Eastbound lanes and demolishing the existing I-10 Eastbound structure. By the morning of Monday, March 13, I-10 Eastbound traffic will be driving on the new median of the I-10 Overpass and the I-10 eastbound bridge structure will be gone.

Project Engineer Tim Twomey said, "Twenty-seven hours is an aggressive timeframe for work that could easily take multiple days. This consolidated timeframe is an effort to mitigate impact to motorists and businesses." See rendering image on the next page.

page 1 of 3



The Texas Department of Transportation is responsible for maintaining 80,000 miles of road and for supporting aviation, rail, and public transportation across the state. GO 10 is a \$158 million reconstruction of Interstate 10 that spans approximately 6 miles on El Paso's West Side between Executive Center Boulevard and North Mesa Street. GO 10 features the addition of collector-distributor lanes and a new direct connector with Border West Expressway.

Maintain a Safe System • Address Congestion • Best-in-Class State Agency • Connect Texas Communities
An Equal Opportunity Employer

www.go10elpaso.com | facebook.com/go10elpaso | twitter.com/go10ep



NEWS RELEASE

EL PASO DISTRICT

Jennifer Wright

(915) 790-4340

Jennifer.Wright3@txdot.gov

a TxDOT Project

For immediate release



The rendering shows approximately how eastbound traffic will be switched to the median of the I-10 Overpass by the morning of Monday, March 13. The switch will stay in place for at least four months. Motorists on I-10 East should approach the newly configured overpass with caution.

Other closures happening next week include:

I-10 & Mesa

Continuous

Wednesday, March 8 through Friday, March 17

- The right turn-only lane on eastbound North Mesa Street (SH 20) is closed between Osborne Drive and South Desert Blvd.
- The right through lane on eastbound North Mesa Street (SH 20) will close between Osborne Drive and South Desert Blvd, but only when necessary and only during the day from 9 a.m. to 4 p.m.

Note: Access to businesses will remain open at all times.

Crews are installing underground utilities. [\[No Map\]](#)

page 2 of 3



The Texas Department of Transportation is responsible for maintaining 80,000 miles of road and for supporting aviation, rail, and public transportation across the state. GO 10 is a \$158 million reconstruction of Interstate 10 that spans approximately 6 miles on El Paso's West Side between Executive Center Boulevard and North Mesa Street. GO 10 features the addition of collector-distributor lanes and a new direct connector with Border West Expressway.

Maintain a Safe System • Address Congestion • Best-in-Class State Agency • Connect Texas Communities

An Equal Opportunity Employer

www.go10elpaso.com | facebook.com/go10elpaso | twitter.com/go10ep



a TxDOT Project
For immediate release

NEWS RELEASE

EL PASO DISTRICT

Jennifer Wright
(915) 790-4340
Jennifer.Wright3@txdot.gov

Sunland Ramps

Overnight

Sunday, March 12 through Thursday, March 16

9 p.m. each night to 6 a.m. each morning

- The Sunland Park Flyover Entrance Ramp to I-10 Eastbound will close.

Crews are conducting prep work for the eventual removal of the ramps. [Map 2]

Daytime

Monday, March 13 through Friday, March 17

9 a.m. to 4 p.m. each day

- The two-lane Sunland Exit Ramp (Exit 13, Westbound) will reduce to one lane.

This closure is necessary to give crews access to the work site. [Map 2]

I-10 West

Daytime

Tuesday, March 14 through Wednesday, March 15

9 a.m. to 4 p.m. each day

- One lane will be closed on I-10 Westbound between the Buena Vista area and the Sunland Park Overpass.

Crews will be drilling column shafts into the ground between eastbound and westbound traffic lanes.

The new columns will support the new Sunland Flyover Entrance Ramp to I-10 East. [No Map]

All closure start times and end times are approximate.

All closures are subject to change.

Find the latest information on the traffic alerts page at go10elpaso.com.

page 3 of 3

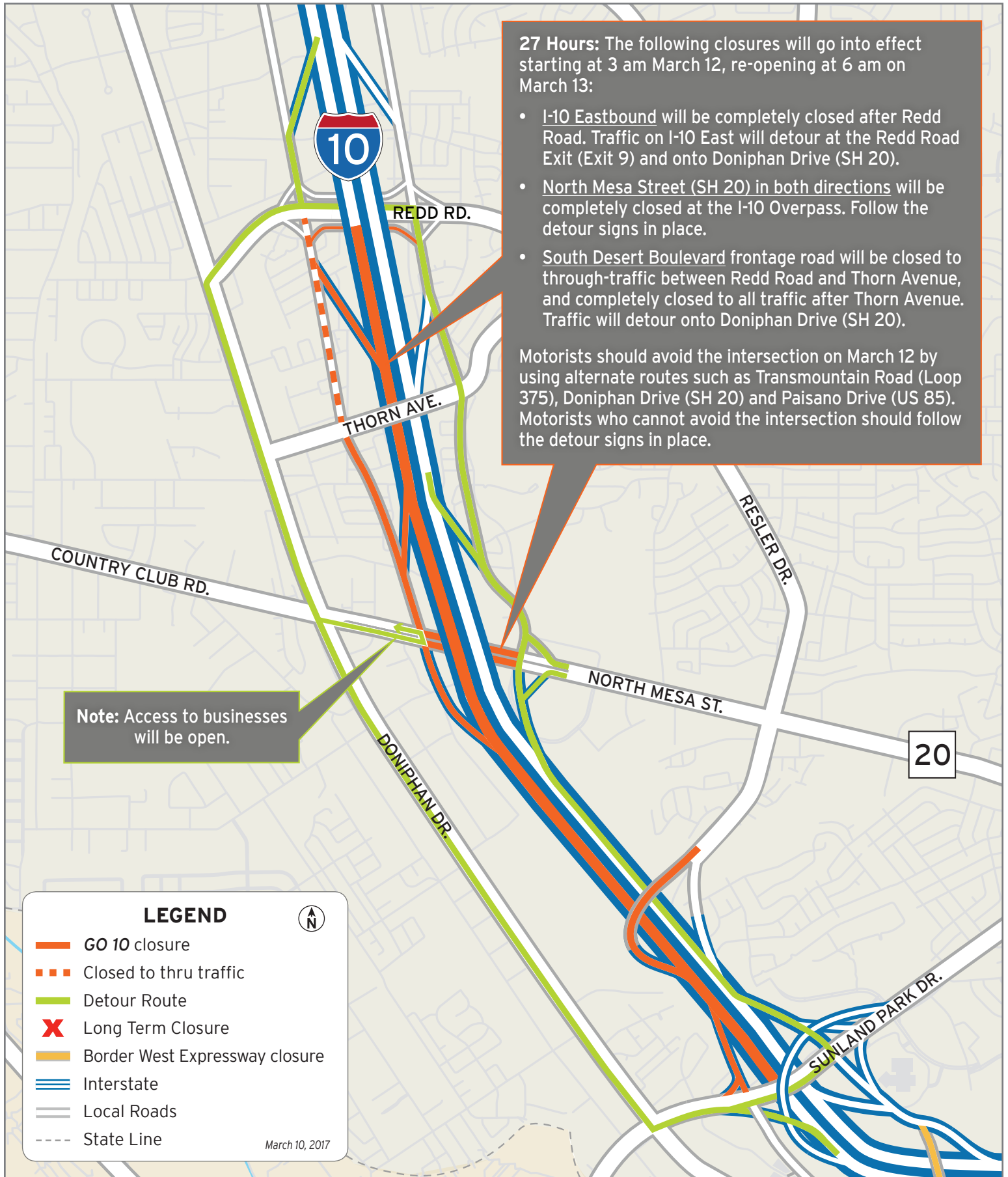


The Texas Department of Transportation is responsible for maintaining 80,000 miles of road and for supporting aviation, rail, and public transportation across the state. GO 10 is a \$158 million reconstruction of Interstate 10 that spans approximately 6 miles on El Paso's West Side between Executive Center Boulevard and North Mesa Street. GO 10 features the addition of collector-distributor lanes and a new direct connector with Border West Expressway.

Maintain a Safe System • Address Congestion • Best-in-Class State Agency • Connect Texas Communities

An Equal Opportunity Employer

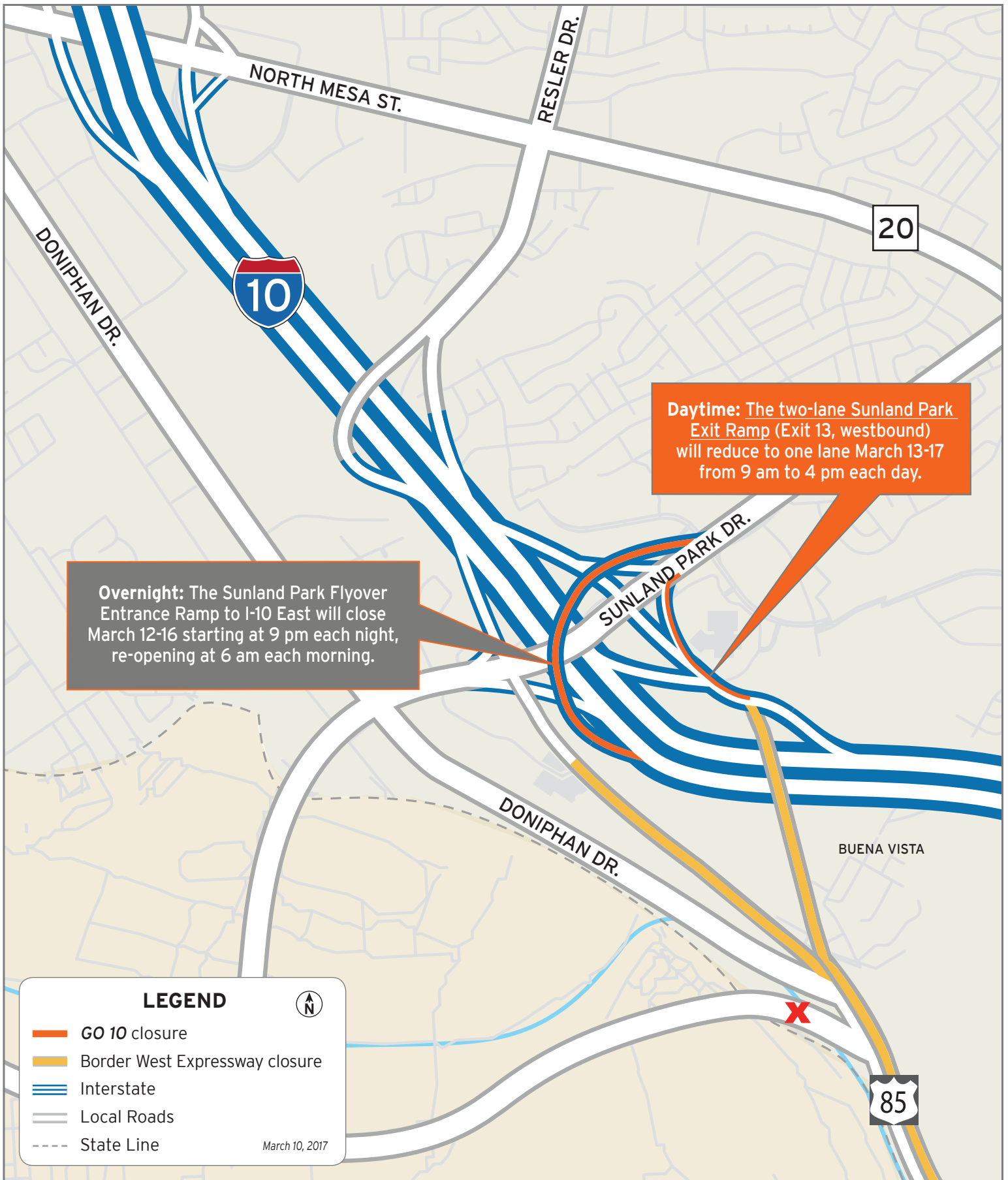
www.go10elpaso.com | facebook.com/go10elpaso | twitter.com/go10ep



27-Hour closure of I-10 Eastbound and Mesa

Map 1 of 2





Closures at Sunland Park

Map 2 of 2

