



a TxDOT Project
For immediate release

NEWS RELEASE

EL PASO DISTRICT

Jennifer Wright
(915) 790-4340
Jennifer.Wright3@txdot.gov

July 12, 2019

Remaining work on Sunland Park and North Mesa is being completed.

Crews are completing work on final items for **GO 10**. Your patience is appreciated as work is completed the project in work zones.

I-10 Westbound CD/Mesa Street (SH 20)

Daytime Lane Closure

Monday, July 15 to Wednesday, July 17

9 a.m. to 4 p.m. each day

- The westbound CD right turn lane to Mesa Street (SH 20) will be closed.

Mesa Street (SH 20)/I-10 Eastbound CD

Daytime Lane Closure

Tuesday, July 16 and Wednesday, July 17

9 a.m. to 4 p.m. each day

- The right turn lane will be closed from North Mesa Street (SH 20) to the eastbound I-10 CD lanes.
- The right lane on the EBCD will be closed between Mesa and 77 Stone.

Paisano Drive (US 85)

Daytime Lane Closure

Wednesday, July 17 and Thursday, July 18

9 a.m. to 4 p.m. each day

- The right lane on Paisano Drive (US 85) will be closed in front of the dealerships.

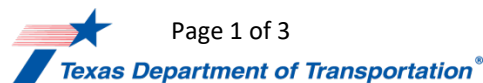
Sunland Park

Nightly

Tuesday, July 16 and Wednesday July 17

9 p.m. to 6 a.m.

- Sunland Park Drive – in the direction traveling southbound, toward Doniphan – will close completely between the Shopping Center/Mall signalized intersection and EBFR/Paisano Drive (US 85). The Sunland Park Flyover will



Page 1 of 3

The Texas Department of Transportation is responsible for maintaining 80,000 miles of road and for supporting aviation, rail, and public transportation across the state. GO 10 is a \$158 million reconstruction of Interstate 10 that spans approximately 6 miles on El Paso's West Side between Executive Center Boulevard and North Mesa Street. GO 10 features the addition of collector-distributor lanes and a new direct connector with Border West Expressway.

Maintain a Safe System • Address Congestion • Best-in-Class State Agency • Connect Texas Communities
An Equal Opportunity Employer

www.go10elpaso.com | facebook.com/go10elpaso | twitter.com/go10ep



a TxDOT Project
For immediate release

NEWS RELEASE

EL PASO DISTRICT

Jennifer Wright
(915) 790-4340
Jennifer.Wright3@txdot.gov

remain open. Detour: Motorists should take the Sunland Park flyover ramp exit to Paisano Drive (US 85) eastbound, take the Racetrack Drive exit ramp, then take a right on Racetrack Drive, and another right on Doniphan Drive to get back onto Sunland Park Drive.

- Sunland Park Drive – all through lanes in the direction traveling northbound, toward the mountain – will be closed between Machuca Drive and North Desert Road. The right turn lane will be open. Detour: Motorists heading north through the Sunland Park intersection will take the Doniphan Drive to Mesa Street.
- Vehicles exiting at Sunland Park (exit 13) from I-10 West will be forced to turn right on Sunland Park Drive. No vehicles will be allowed to go straight through the signalized intersection at Sunland Park Drive.
- Vehicles exiting at Sunland Park (exit 13) from I-10 East will be forced to turn right on Sunland Park Drive. No vehicles will be allowed to go straight through the signalized intersection at Sunland Park Drive.
- The westbound-to-eastbound turnaround bridge at the Sunland Park Drive overpass will close.
- The eastbound-to-westbound turnaround bridge at the Sunland Park Drive overpass will close.
- The Resler flyover ramp to EBCD will be closed. Detour: Motorists driving south on Resler Drive who wish to access I-10 eastbound should take North Mesa Street (SH 20) to Sunland Park Drive, then take the Sunland Park flyover ramp to re-enter I-10 East.
- The Sunland Park exit (exit 13) from I-10 eastbound will be closed. Detour: Motorists driving east on I-10 will exit to Mesa Street (SH 20). Motorists driving to north Sunland Park Drive: turn left on North Mesa Street (SH 20), then follow North Mesa Street (SH 20) to Sunland Park Drive. Motorists traveling south to Sunland Park Drive: turn right on Mesa Street (SH 20) then turn left on Doniphan Drive to Sunland Park Drive.
- The eastbound CD lanes will be closed at the North Mesa Street (SH 20) entrance ramp to eastbound I-10. Motorists will be able to access I-10 eastbound from the North Mesa entrance ramp. Detour: Eastbound I-10 motorists exiting to Sunland Park Drive will take the Mesa Street (SH 20) exit, turn right on Mesa Street and turn left on Doniphan Drive.
- The westbound CD lane will have the right lane closed between the Sunland Park Drive overpass and Resler. The Resler exit ramp will be closed

Crews will be working on sealing joints at the Sunland Park overpass and striping the roadway. [Map 1]



a TxDOT Project
For immediate release

NEWS RELEASE

EL PASO DISTRICT

Jennifer Wright
(915) 790-4340
Jennifer.Wright3@txdot.gov

North Mesa Street

Overnight

Thursday, July 18
9 p.m. to 6 a.m.

- North Desert Boulevard and the southbound Mesa Street (SH 20) right turn lane will be closed at North Mesa Street (SH 20). All business driveways to North Desert Blvd will be closed. Motorists headed south on North Mesa Street (SH 20) – in the direction towards Doniphan Drive – will be able to continue through the intersection under the I-10 overpass. Detour: Westbound motorists to continue south on Mesa Street (SH 20) to Doniphan Drive (SH20), turn right to Redd Road and use the Redd Rd. entrance ramp to I-10 WB.
- The eastbound-to-westbound turnaround at North Mesa Street (SH 20) will be closed. Crews will be striping the westbound North Mesa entrance ramp. [Map 2]

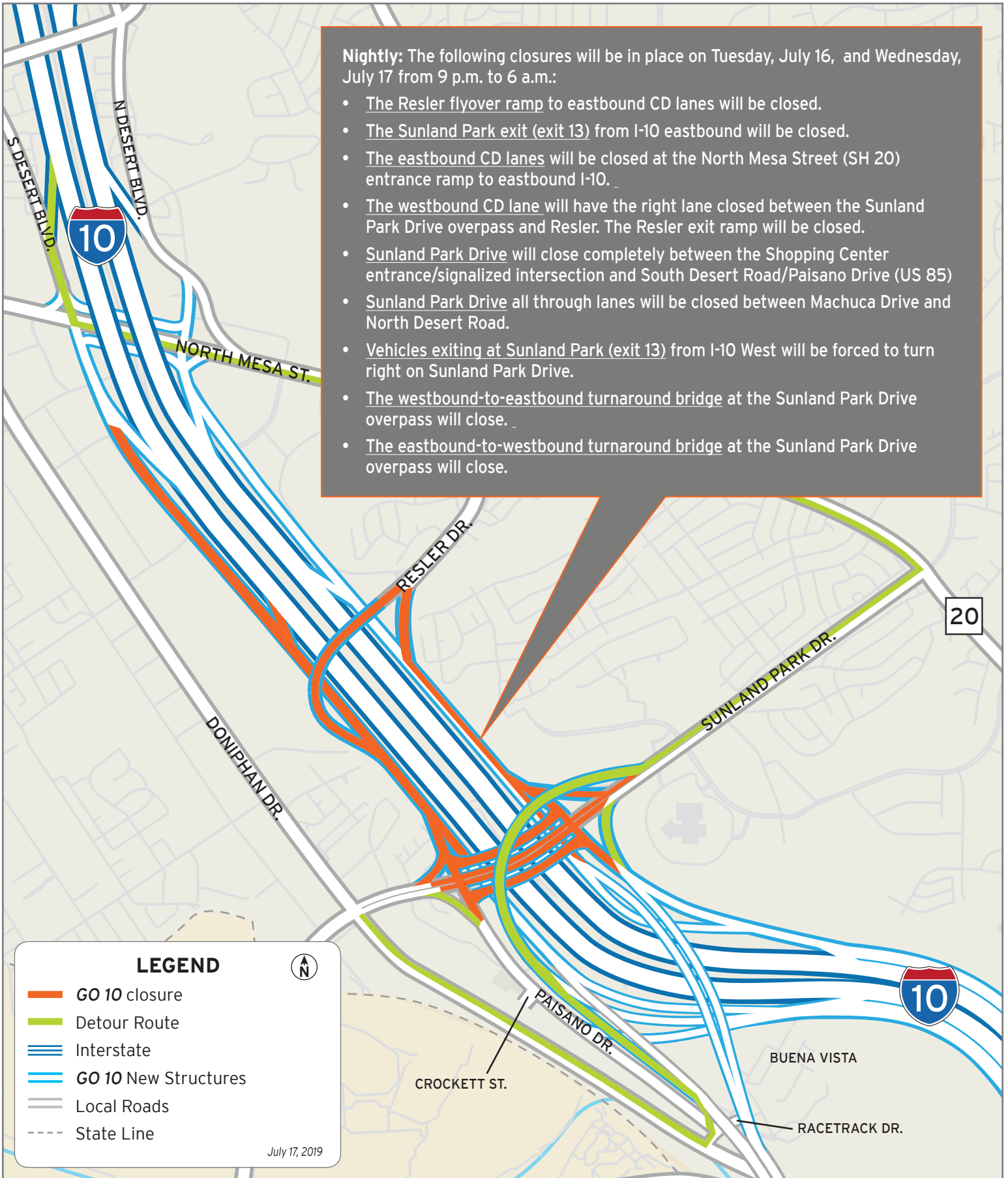
All closures are subject to change or cancellation.

All closure times are approximate.

Exit and entrance ramps may close up to one hour prior to the start time of an I-10 closure.

Nightly: The following closures will be in place on Tuesday, July 16, and Wednesday, July 17 from 9 p.m. to 6 a.m.:

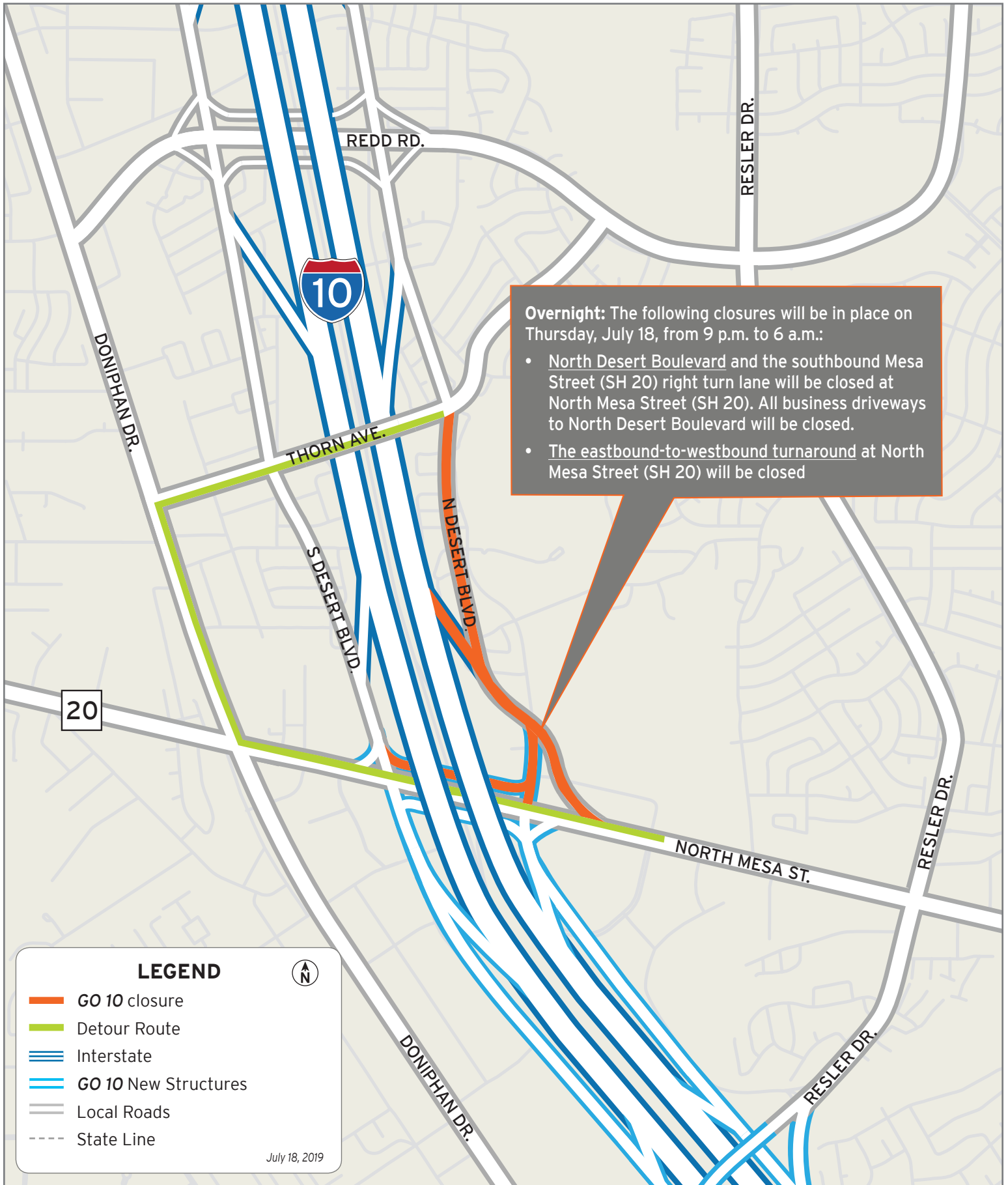
- The Resler flyover ramp to eastbound CD lanes will be closed.
- The Sunland Park exit (exit 13) from I-10 eastbound will be closed.
- The eastbound CD lanes will be closed at the North Mesa Street (SH 20) entrance ramp to eastbound I-10.
- The westbound CD lane will have the right lane closed between the Sunland Park Drive overpass and Resler. The Resler exit ramp will be closed.
- Sunland Park Drive will close completely between the Shopping Center entrance/signalized intersection and South Desert Road/Paisano Drive (US 85)
- Sunland Park Drive all through lanes will be closed between Machuca Drive and North Desert Road.
- Vehicles exiting at Sunland Park (exit 13) from I-10 West will be forced to turn right on Sunland Park Drive.
- The westbound-to-eastbound turnaround bridge at the Sunland Park Drive overpass will close.
- The eastbound-to-westbound turnaround bridge at the Sunland Park Drive overpass will close.



Eastbound CD Lane and Sunland Park Closed

Map 1 of 2





North Desert Closest at I-10 West

Map 2 of 2

