



a TxDOT Project
For immediate release

NEWS RELEASE

EL PASO DISTRICT

Jennifer Wright
(915) 790-4340
Jennifer.Wright3@txdot.gov

August 3, 2018

GO 10 is on the tail-end of its four-year timeline and that means plenty of construction milestones to applaud

- Recently, crews finished paving half of North Mesa Street (SH 20) under the I-10 overpass. Work will start next week to start paving the other half. Watch for traffic pattern changes later this month.
- Next week, crews will place the *final* beams on the new and improved Sunland Park overpass.
- On August 20, the I-10 Westbound overpass at North Mesa Street (SH 20) will open to traffic.

Plus! 27-hour closures are planned for August 19 and August 26.

North Mesa Street

Continuous

Monday, August 6 at 9 a.m. through Friday, August 10 at 3 p.m.

- The right lane on North Mesa Street (SH 20) – in the direction traveling toward Doniphan Drive – will close between Remcon Circle and Osborne Drive.

Crews continue work to install a storm drain pipe.

Bus Service: The Sun Metro bus stop on North Mesa Street (SH 20) at Osborne Drive (near Taco Cabana) will be closed during this work activity. An alternate bus stop is available on North Mesa Street (SH 20) at Crossroads Drive (near Pizza Hut). For more information, contact Sun Metro at (915) 212-3436 or (915) 212-3300. [Map 1]

I-10 West at Sunland Park

Continuous

Monday, August 6 at 9 a.m. through Thursday, August 9 until 3 p.m.

- The Sunland Park exit ramp from I-10 Westbound will be kept to one lane.

Note: Motorists on I-10 Westbound should slow down as they approach the Sunland Park exit. Traffic may slow or stop suddenly. [No Map]

I-10 Both Directions

Overnight

Tuesday, August 7 through Thursday, August 9

9 p.m. to 6 a.m. nightly

- I-10 Westbound will close at Executive Center (Exit 16).



page 1 of 4

The Texas Department of Transportation is responsible for maintaining 80,000 miles of road and for supporting aviation, rail, and public transportation across the state. GO 10 is a \$158 million reconstruction of Interstate 10 that spans approximately 6 miles on El Paso's West Side between Executive Center Boulevard and North Mesa Street. GO 10 features the addition of collector-distributor lanes and a new direct connector with Border West Expressway.

Maintain a Safe System • Address Congestion • Best-in-Class State Agency • Connect Texas Communities

An Equal Opportunity Employer

www.go10elpaso.com | facebook.com/go10elpaso | twitter.com/go10ep



a TxDOT Project
For immediate release

NEWS RELEASE

EL PASO DISTRICT

Jennifer Wright
(915) 790-4340
Jennifer.Wright3@txdot.gov

Detour: Motorists will exit at Executive Center Boulevard (Exit 16) and follow it to North Mesa Street (SH 20).
Motorists may re-enter I-10 Westbound using the North Mesa Street entrance ramp.

- I-10 Eastbound will close at Sunland Park (Exit 13).

Detour: Motorists will exit at Sunland Park Drive (Exit 13) and immediately re-enter I-10 at the next ramp.

- Sunland Park Drive will close in both directions at the I-10 overpass.
- Crockett Street access to Paisano Drive (US 85) will close.
- The Resler Drive flyover entrance ramp to I-10 Eastbound will close.
- The Schuster Avenue entrance ramp to I-10 Westbound will close.

Milestone: Crews will be placing the *final* set of beams on the Sunland Park Drive overpass. [Map 2]

North Mesa Street

Overnight

Tuesday, August 7 through Thursday, August 9
8 p.m. to 6 a.m. nightly

- North Mesa Street (SH 20) – only the lanes for traffic traveling toward Remcon Circle – will close completely between South Desert Boulevard and Remcon Circle.

Detour: Motorists on North Mesa Street (SH 20) who want to cross from the Osborne side of I-10 to the Remcon side of I-10 should use an alternate route such as Thorn Avenue or Redd Road. The Sunland Park Drive overpass will not be an alternate route option as it will also close during these nights.

- The North Mesa exit ramp (Exit 11) from I-10 Westbound will close.

Detour: Motorists on I-10 Westbound who want to exit at North Mesa (Exit 11) should find an alternate exit ramp or follow the detour signs in place.

Milestone: Crews have finished paving half the through-lanes on North Mesa Street under I-10. Traffic on North Mesa Street (SH 20) will be switched onto the newly paved lanes later this month. [Map 3]

I-10 West at Sunland

27-HOURS



Sunday, August 19 at 3 a.m. until Monday, August 20 at 6 a.m.

- I-10 Westbound will close at Sunland Park (Exit 13).
- The Sunland Park Drive entrance ramp to I-10 Westbound will close.

Detour: Motorists on I-10 Westbound will exit at Sunland Park (Exit 13), follow it to North Mesa Street (SH 20), then follow North Mesa Street (SH 20) northbound to re-enter I-10 Westbound.

page 2 of 4



The Texas Department of Transportation is responsible for maintaining 80,000 miles of road and for supporting aviation, rail, and public transportation across the state. GO 10 is a \$158 million reconstruction of Interstate 10 that spans approximately 6 miles on El Paso's West Side between Executive Center Boulevard and North Mesa Street. GO 10 features the addition of collector-distributor lanes and a new direct connector with Border West Expressway.

Maintain a Safe System • Address Congestion • Best-in-Class State Agency • Connect Texas Communities

An Equal Opportunity Employer

www.go10elpaso.com | facebook.com/go10elpaso | twitter.com/go10ep



NEWS RELEASE

EL PASO DISTRICT

Jennifer Wright

(915) 790-4340

Jennifer.Wright3@txdot.gov

a TxDOT Project

For immediate release

Crews will be re-stripping lanes on I-10 Westbound and moving barrier walls.

ATTENTION: By the morning of August 20, traffic on I-10 Westbound approaching North Mesa Street (SH 20) will experience a change in lane patterns. Please proceed cautiously. [Map coming next week]

I-10 East at Redd

27-HOURS



Sunday, August 26 at 3 a.m. until Monday, August 27 at 6 a.m.

- I-10 Eastbound will close at Redd Road (Exit 9).
- The Redd Road entrance ramp to I-10 Eastbound will close.

Detour: Motorists on I-10 Eastbound will exit at Redd Road (Exit 9), follow it to South Desert Boulevard, then follow South Desert Boulevard to North Mesa Street (SH 20). Motorists may re-enter I-10 Eastbound using the North Mesa Street entrance ramp.

Crews will be re-stripping lanes on I-10 Eastbound and moving barrier walls.

ATTENTION: By the morning of August 27, traffic on I-10 Eastbound at North Mesa Street (SH 20) will experience a change in lane patterns. Please proceed cautiously. [Map coming next week]

Advance Notice

The following closures are still developing. Details, such as dates, may change.

Overnight

Monday, August 13 through Thursday, August 16

9 p.m. to 6 a.m. nightly

- I-10 Westbound will close at Sunland Park (Exit 13).
- The Sunland Park Drive overpass at I-10 will close in both directions.
- The Sunland Park Drive entrance ramp to I-10 Westbound will close.

Detour: Motorists will exit at Sunland Park Drive (Exit 13), follow it to North Mesa Street (SH 20), then take North Mesa Street (SH 20) northbound to re-enter I-10 Westbound.

Crews will be setting deck panels onto the developing Sunland Park overpass.

Continuous

Monday, August 13 at 9 a.m. through Friday, August 17 at 3 p.m.

- The right lane on North Mesa Street (SH 20) – in the direction traveling toward Doniphan Drive – will close between Remcon Circle and Osborne Drive.

Crews are installing a storm drain pipe.

page 3 of 4



The Texas Department of Transportation is responsible for maintaining 80,000 miles of road and for supporting aviation, rail, and public transportation across the state. GO 10 is a \$158 million reconstruction of Interstate 10 that spans approximately 6 miles on El Paso's West Side between Executive Center Boulevard and North Mesa Street. GO 10 features the addition of collector-distributor lanes and a new direct connector with Border West Expressway.

Maintain a Safe System • Address Congestion • Best-in-Class State Agency • Connect Texas Communities

An Equal Opportunity Employer

www.go10elpaso.com | facebook.com/go10elpaso | twitter.com/go10ep



a TxDOT Project
For immediate release

NEWS RELEASE

EL PASO DISTRICT

Jennifer Wright
(915) 790-4340
Jennifer.Wright3@txdot.gov

Bus Service: The Sun Metro bus stop on North Mesa Street at Osborne Drive (near Taco Cabana) will be closed during this work activity. An alternate bus stop is available on North Mesa Street at Crossroads Drive (near Pizza Hut). For more information, contact Sun Metro at (915) 212-3436 or (915) 212-3300.

All closures are subject to change.

All closure times are approximate.

Exit and entrance ramps may close up to one hour prior to the start time of an I-10 closure.

page 4 of 4

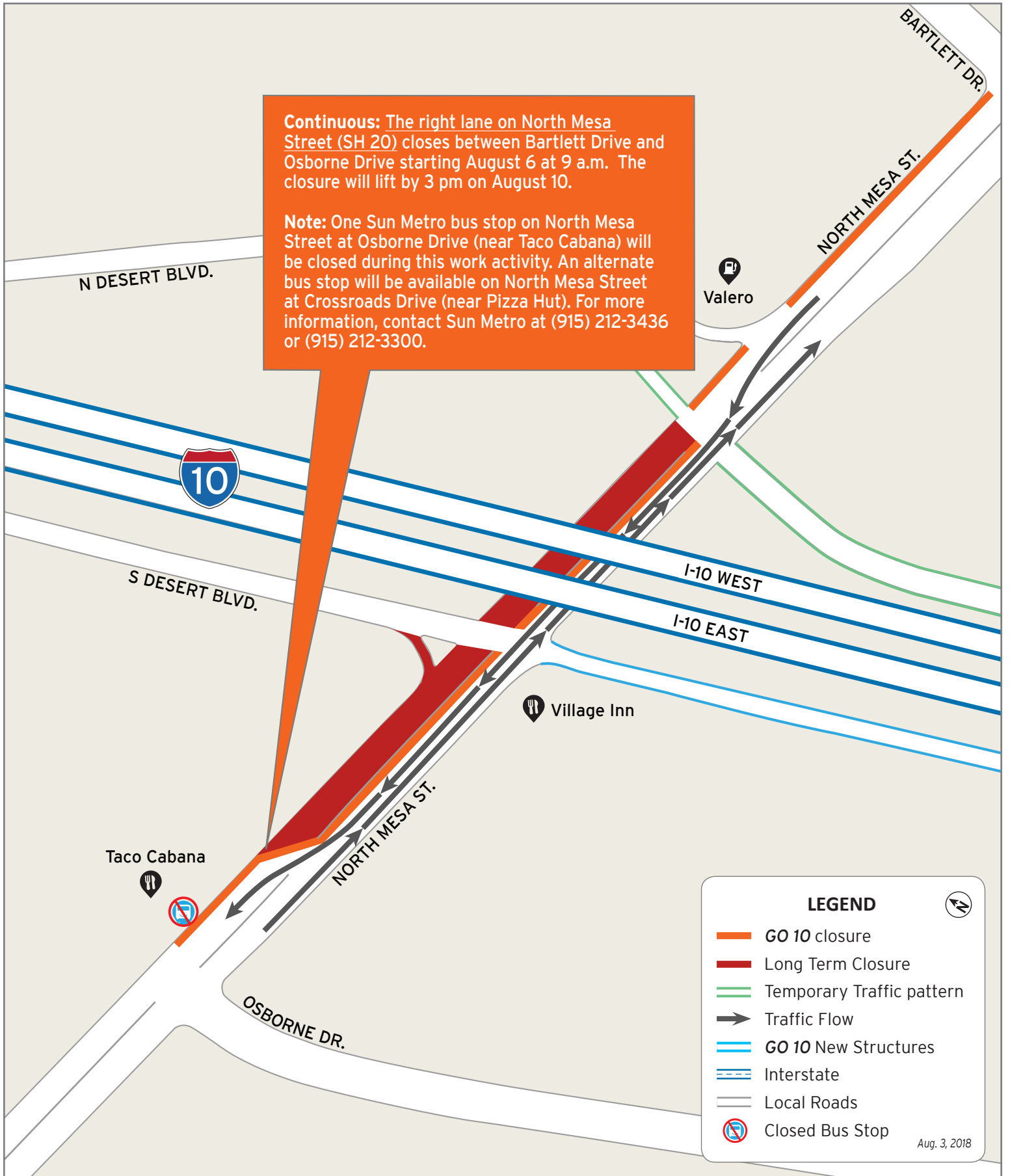


The Texas Department of Transportation is responsible for maintaining 80,000 miles of road and for supporting aviation, rail, and public transportation across the state. GO 10 is a \$158 million reconstruction of Interstate 10 that spans approximately 6 miles on El Paso's West Side between Executive Center Boulevard and North Mesa Street. GO 10 features the addition of collector-distributor lanes and a new direct connector with Border West Expressway.

Maintain a Safe System • Address Congestion • Best-in-Class State Agency • Connect Texas Communities

An Equal Opportunity Employer

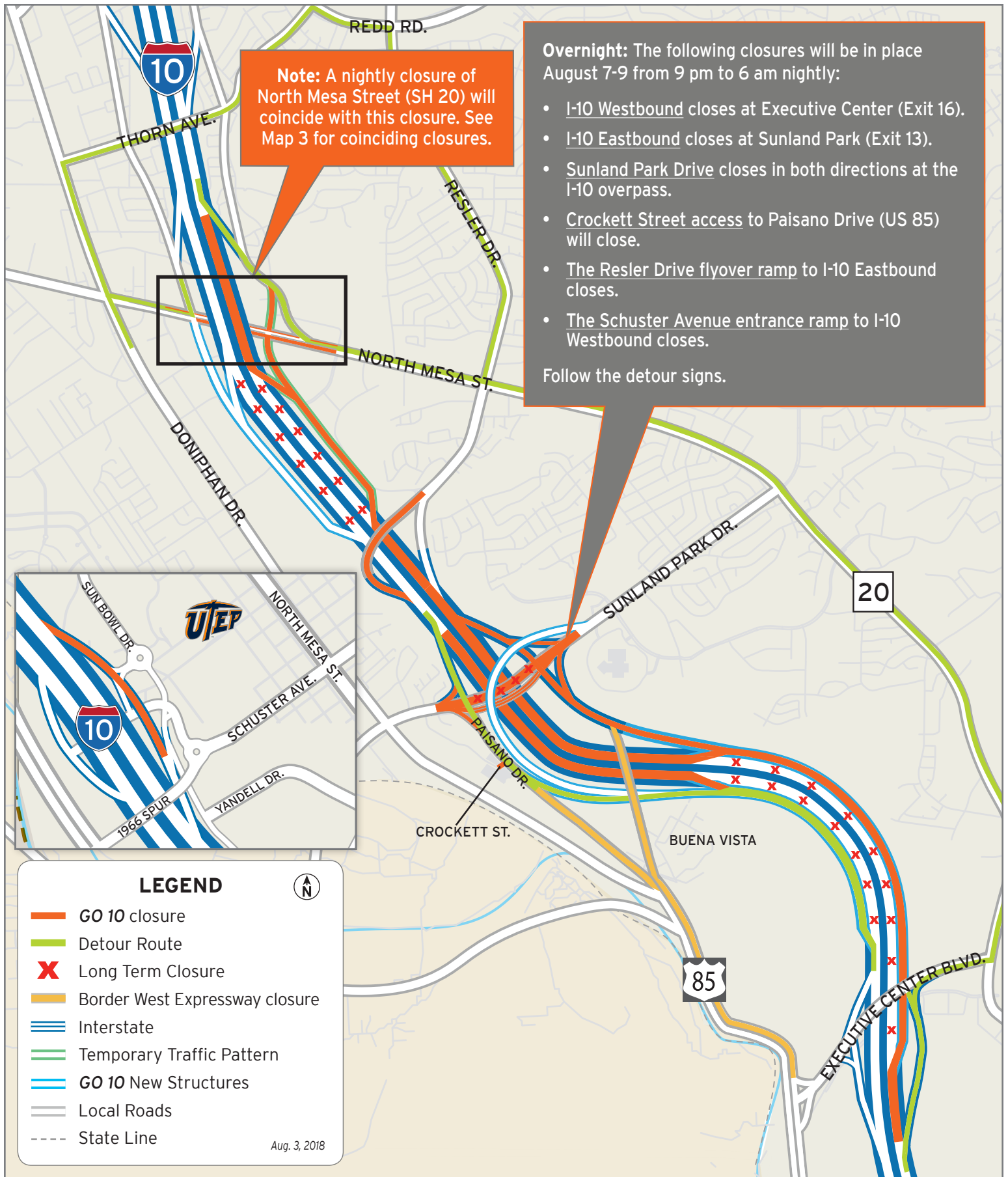
www.go10elpaso.com | facebook.com/go10elpaso | twitter.com/go10ep



Lane closure on North Mesa

Map 1 of 3





I-10 both directions closes for 3 nights

Map 2 of 3



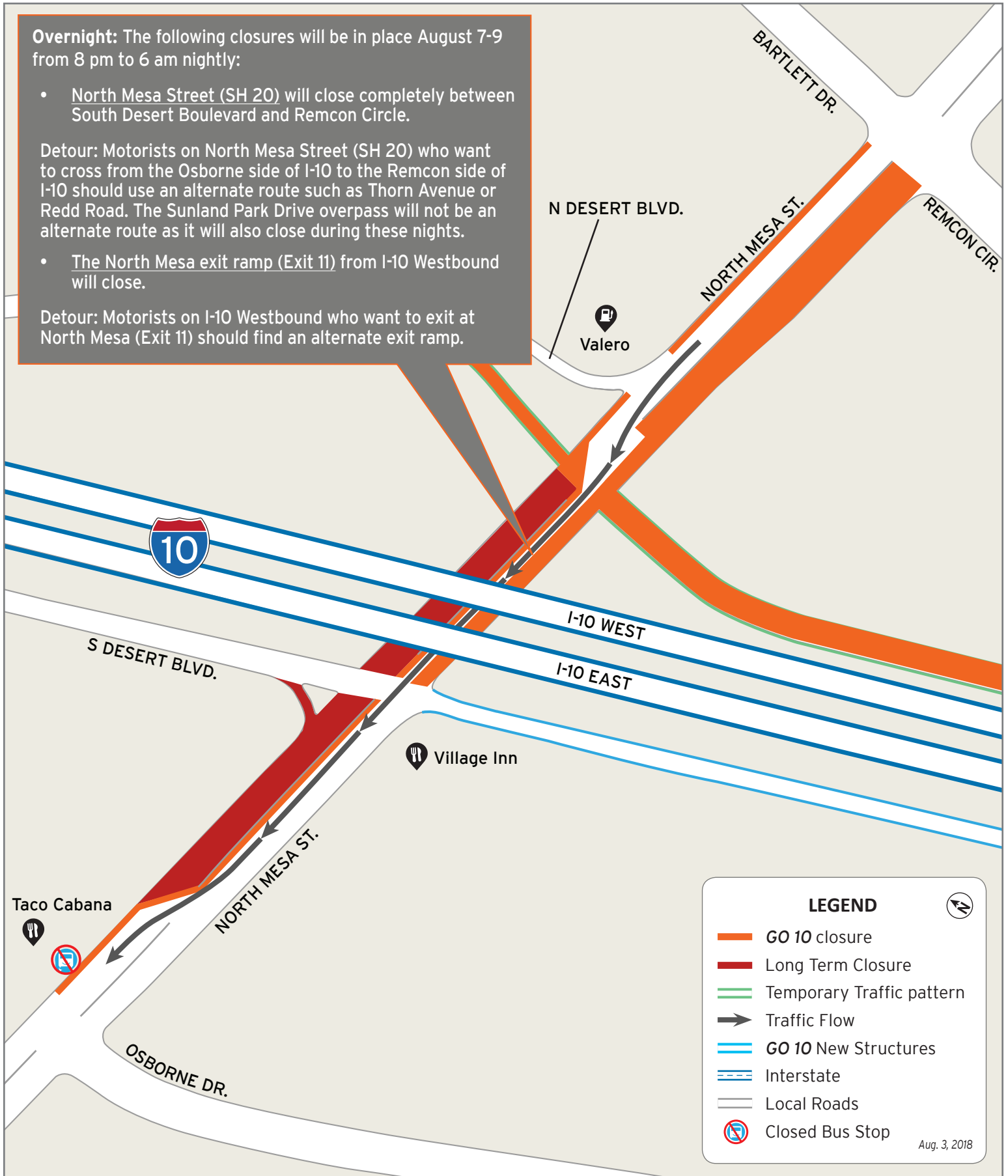
Overnight: The following closures will be in place August 7-9 from 8 pm to 6 am nightly:

- North Mesa Street (SH 20) will close completely between South Desert Boulevard and Remcon Circle.

Detour: Motorists on North Mesa Street (SH 20) who want to cross from the Osborne side of I-10 to the Remcon side of I-10 should use an alternate route such as Thorn Avenue or Redd Road. The Sunland Park Drive overpass will not be an alternate route as it will also close during these nights.

- The North Mesa exit ramp (Exit 11) from I-10 Westbound will close.

Detour: Motorists on I-10 Westbound who want to exit at North Mesa (Exit 11) should find an alternate exit ramp.



Closures will affect North Mesa

Map 3 of 3

