



a TxDOT Project
For immediate release

NEWS RELEASE

EL PASO DISTRICT

Blanca Del Valle
(915) 790-4341
Blanca.DelValle@txdot.gov

April 22, 2016

Mesa

North Mesa Street will have a right lane closed from South Desert Boulevard to North Desert Boulevard for one night from 9 p.m. to 5 a.m. on Monday, April 25. Crews will install temporary fiber conduit.

The eastbound North Mesa Street Exit Ramp and the South Desert Boulevard frontage road between Thorn Avenue and North Mesa Street will be closed from 5 a.m. to noon Monday, April 25. Crews will be placing pavement.

North Mesa Street will have a right lane closed in the direction headed toward Doniphan Drive between North Desert Boulevard and South Desert Boulevard. The closure will be in place from 5:30 a.m. to 4 p.m. on Thursday, April 28, while crews place pavement.

Resler

The westbound Resler Exit Ramp will be completely closed for four nights:

- > 9 p.m. Monday, April 25 to 5 a.m. the following morning
- > 9 p.m. Tuesday, April 26 to 5 a.m. the following morning
- > 9 p.m. Wednesday, April 27 to 5 a.m. the following morning
- > 9 p.m. Thursday, April 28 to 5 a.m. the following morning

This is necessary while crews pull fiber cables.

All work is dependent upon weather conditions.

###

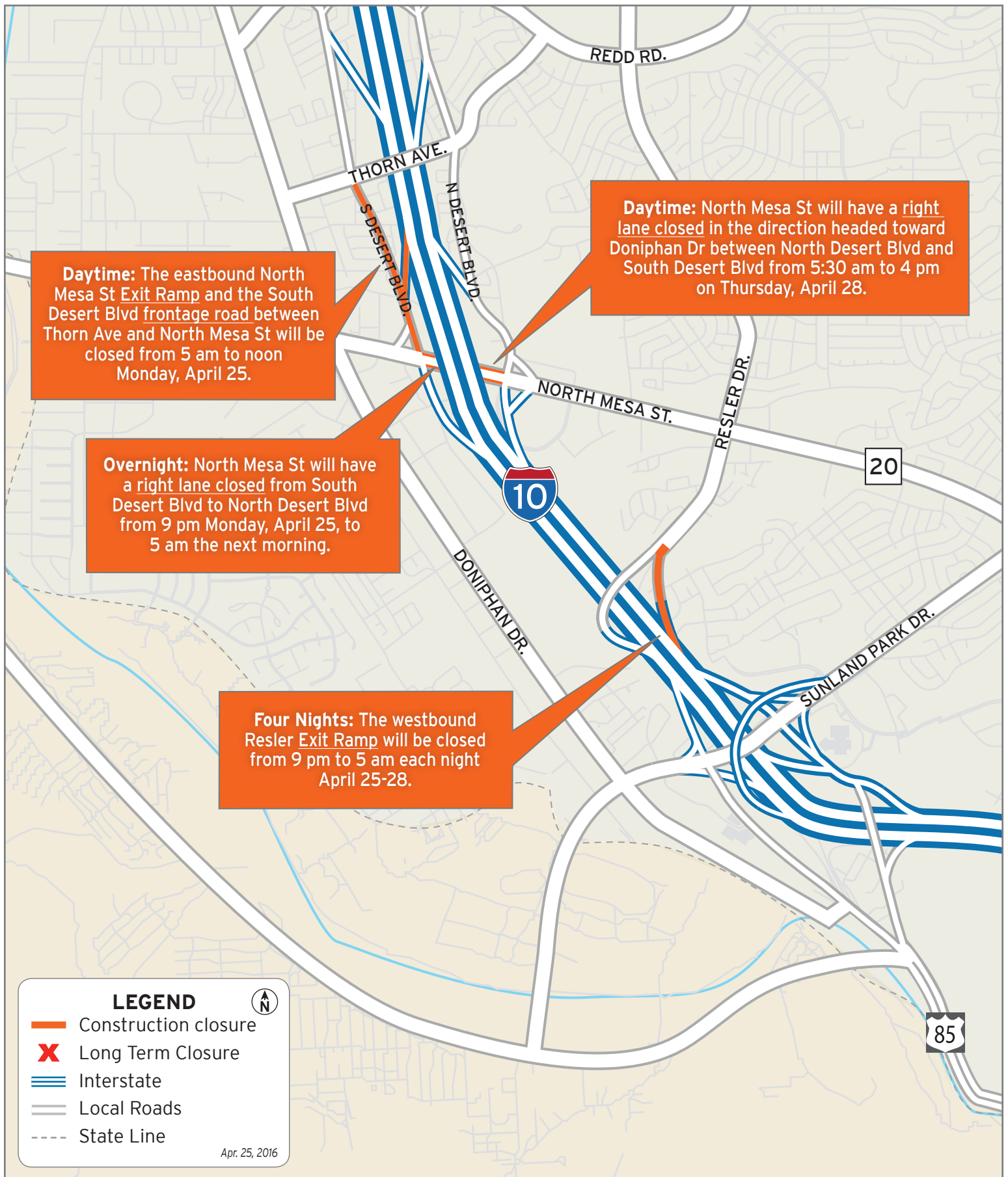


The Texas Department of Transportation is responsible for maintaining 80,000 miles of road and for supporting aviation, rail, and public transportation across the state. GO 10 is a \$158 million reconstruction of Interstate 10 that spans approximately 6 miles on El Paso's West Side between Executive Center Boulevard and North Mesa Street. GO 10 features the addition of collector-distributor lanes and a new direct connector with Border West Expressway.

Maintain a Safe System • Address Congestion • Best-in-Class State Agency • Connect Texas Communities

An Equal Opportunity Employer

www.go10elpaso.com | facebook.com/go10elpaso | twitter.com/go10ep



Various night and day closures April 25-28

