



a TxDOT Project
For immediate release

NEWS RELEASE

EL PASO DISTRICT

Blanca Del Valle
(915) 790-4341
Blanca.DelValle@txdot.gov

April 28, 2016

Mesa

North Mesa Street (SH 20) will have a right lane closed in the direction headed toward Doniphan Drive between North Desert Boulevard and South Desert Boulevard during the day from 9 a.m. to 4 p.m. on **Friday, April 29**. Crews will place asphaltic pavement.

The eastbound North Mesa Exit Ramp and the left lane on South Desert Boulevard frontage road between the Exit Ramp and the North Mesa Street (SH 20) intersection will be closed during the day from 9 a.m. to 4 p.m. on **Friday, April 29**. Crews will be placing asphaltic pavement.

Follow the detour signs in place.
All work is dependent upon weather conditions.

###

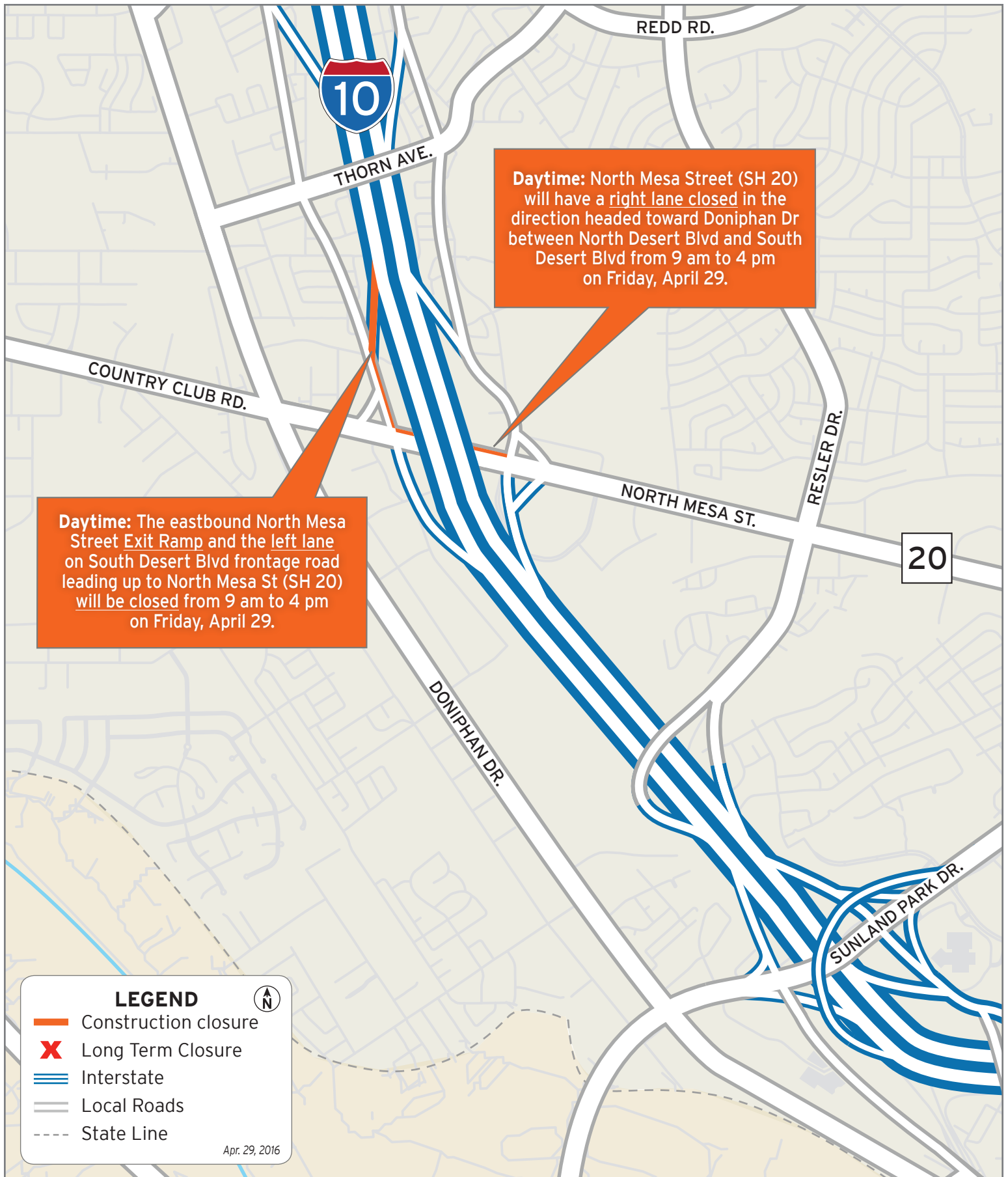


The Texas Department of Transportation is responsible for maintaining 80,000 miles of road and for supporting aviation, rail, and public transportation across the state. GO 10 is a \$158 million reconstruction of Interstate 10 that spans approximately 6 miles on El Paso's West Side between Executive Center Boulevard and North Mesa Street. GO 10 features the addition of collector-distributor lanes and a new direct connector with Border West Expressway.

Maintain a Safe System • Address Congestion • Best-in-Class State Agency • Connect Texas Communities

An Equal Opportunity Employer

www.go10elpaso.com | facebook.com/go10elpaso | twitter.com/go10ep



Closures at North Mesa Street on April 29

